

Lloyd's Register of Shipping.

SURVEYS FOR FREEBOARD.

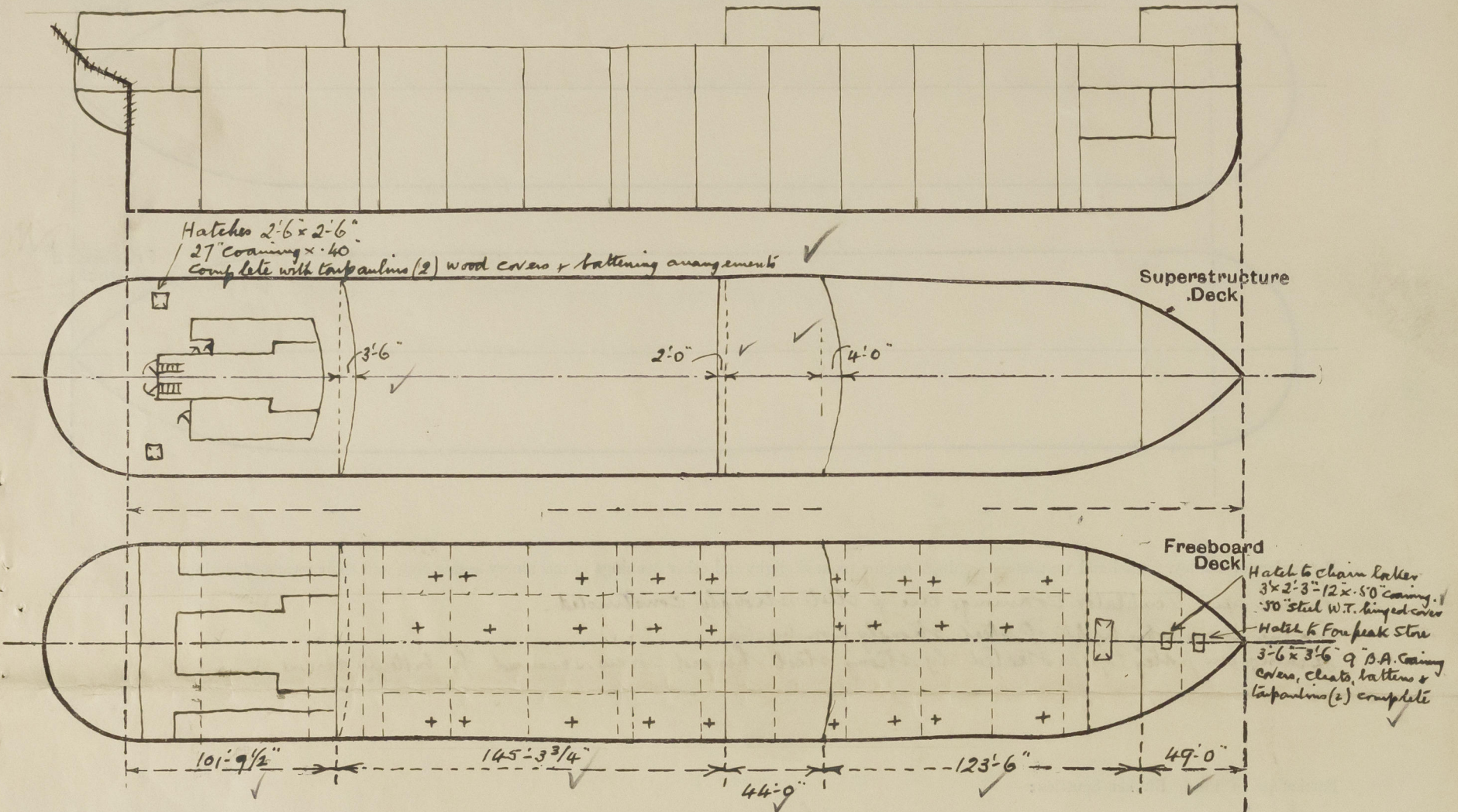
(CONDITIONS OF ASSIGNMENT.)

9 DEC 1941

ET. COPY

Ship's Name *"BRITISH CHARACTER"*Port of Survey *Walter-on-Dyne*Official Number *168246*Surveyor's Signature *E.H. Dean*Nationality and Port of Registry *British, London.*Date of Survey *During Construction.*

Disposition and dimensions of superstructures, trunks, deckhouses and machinery casings to be inserted in the diagrams and tabular statement:—



Particulars of Superstructures, Trunks, Casings, Deckhouses.

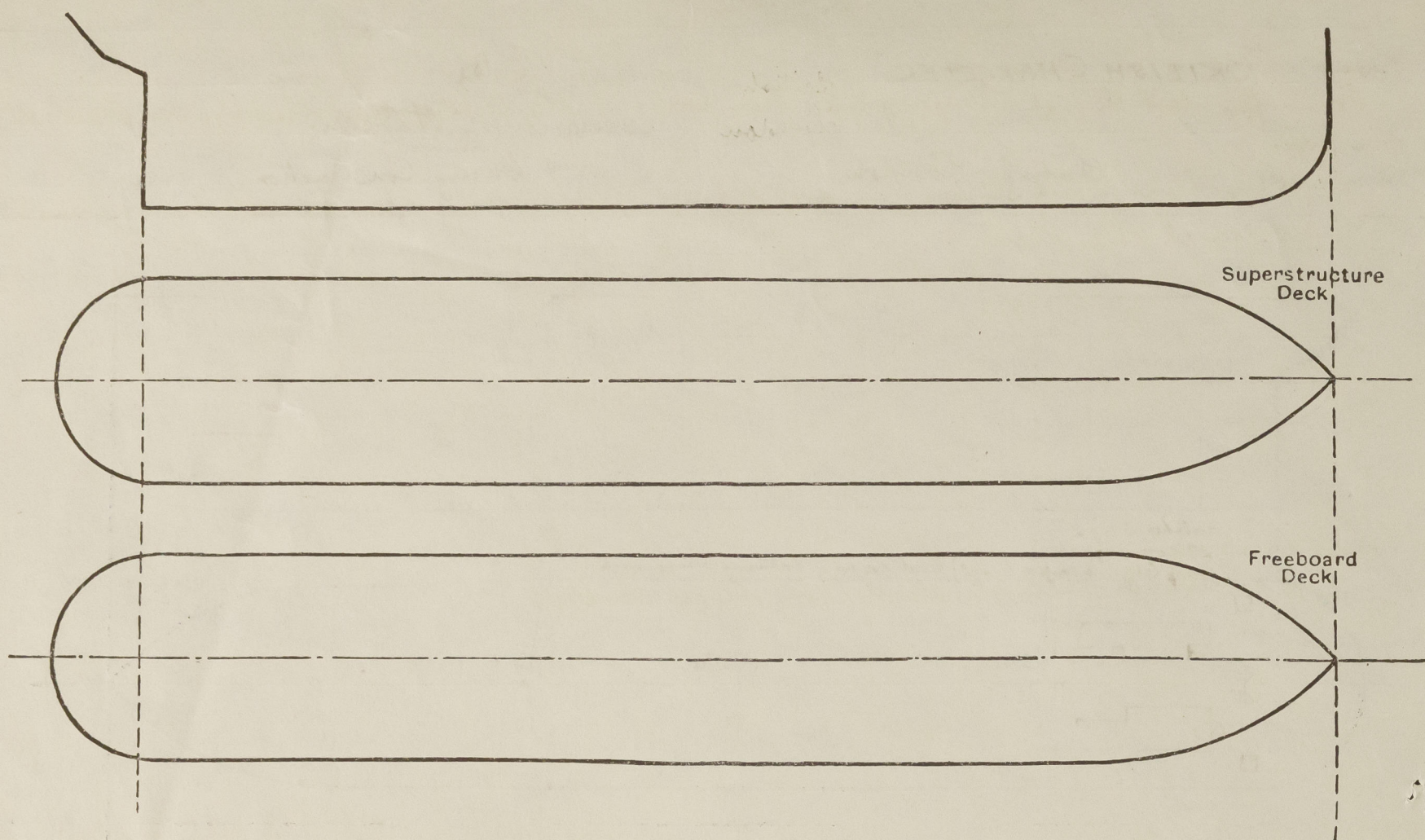
	Coaming	Plating	Stiffeners	Spacing	End Attachments of Stiffeners	Size of Openings	Height of Sills	Height of Casings
Poop Bulkhead	-	44"	10 x 3 1/2 x 40 B.A.	30"	Lugged.	2 @ 5'-3" x 2'-3"	21"	8'-0" ✓
Raised Quarter Deck Bulkhead ...	-					2 @ 4'-1" x 3'-1"		
Bridge, After Bulkhead	-	30"	4 1/2 x 3 x 34"	30"		1 @ 4'-3" x 2'-3"	21"	8'-0" ✓
Bridge, Forward Bulkhead	-	44"	10 x 3 1/2 x 40 B.A.	30"	Lugged.	1 @ 5'-3" x 2'-3"	21"	8'-0" ✓
Forecastle Bulkhead	-	30"	4 x 3 x 32"	30"		2 @ 4'-1" x 3'-1"	21"	8'-0" ✓
Trunk, Aft	-							
Trunk, Forward	-							
Exposed Machinery Casings on Freeboard or Raised Quarter Decks ...	-							
Exposed Machinery Casings on Superstructure Decks	-	30"	3 x 3 x 30"	25"	Bkt'd. at Gp	5 @ 5'-0" x 2'-0"	18"	8'-0" ✓
Machinery Casings within Superstructures not fitted with Class I Closing Appliances	-							
Deckhouses on Flush Deck Ships ...	-							

Particulars of Closing Appliances (state if capable of being manipulated from both sides).

Poop Bulkhead	2 W.T. doors operated both sides. (Steel).	✓
Raised Quarter Deck Bulkhead ...	Steel hinged	
Bridge, After Bulkhead	1 W.T. door operated both sides & 2 openings closed by hook bolted portable plates.	✓
Bridge, Forward Bulkhead	1 Steel hinged W.T. door operated both sides.	✓
Forecastle Bulkhead	2 openings closed by hook bolted portable plates.	✓
Exposed Machinery Casings on Freeboard or Raised Quarter Decks ...	-	
Exposed Machinery Casings on Superstructure Decks	5 steel hinged doors operated both sides.	✓
Machinery Casings within Superstructures not fitted with Class I Closing Appliances	-	
Deckhouses on Flush Deck Ships ...	-	

PARTICULARS OF PROTECTION TO OPENINGS, ETC.

The following diagrams should be used to indicate the positions of cargo and coaling hatchways, gangway, cargo and coaling ports, ventilators, companionways, etc., which would affect the seaworthiness of the ship:—



Particulars of fiddle, funnel and ventilator coamings, engine room skylight and other openings in machinery casing tops and their means of closing:—

Funnel and Ventilator coamings are of steel strongly constructed. ✓
 Engine room skylight of steel strongly constructed. ✓
 Openings in fiddle top protected by strong steel hinged covers secured by butterfly screws. ✓

Particulars of Flush Bunker Scuttles:—

None. ✓

Particulars of Companionways:—

Strongly constructed steel entrances to pump room on upper deck having steel door 4'-6" x 2'-3" with 20" sill watertight & being capable of operation both sides. ✓
 In after deck house on poop deck - 2 entrance doors to freeboard deck - substantial steel doors - 5'-0" x 2'-0" sills 18" protected both sides. ✓

Particulars of Ventilators in exposed positions on freeboard and superstructure decks:—

On Fore Head.
 5' at 10" dia. Coaming 36" x 32". ✓
 1 " 8 " " 36" x 32". ✓
on Bridge deck.
 9 at 6" dia. Coaming 36" x 30". ✓
on Poop deck.
 6 at 6" dia. Coaming 30" x 30". ✓
 2 " 6 " " 30" x 30" mushroom top. ✓
 A number of Forepeak Vents fitted about poop deck generally thus:—
 2'-9" x 3'-4" Substantial construction 6" x 4".

on upper deck.
 2 at 10" dia. 36" x 32". ✓
 1 " 24" " high Coaming suitably supported. ✓
 all Vent coamings closed: Wood plugs & canvas covers. ✓

Particulars of Air Pipes in exposed positions on freeboard, raised quarter, or superstructure decks:—

To Rudder trunk - 3 1/2" dia. 18" high. ✓
 " After peak tank - 2 3/2" " 18" " ✓
 " F.W. tanks 4-2 1/2" dia 18" " ✓
 " Feed tank D.B. 2-3" " 18" " ✓
 " D.B. Coffdam 1-2 1/2" " 18" " ✓
 " Oil fuel D.B. 2-4" " 18" " ✓
 " " Bunker 2-4" " 18" " ✓
 " aft. Coffdam 2-4" " 18" " ✓

To fore Coffdam 2-4" dia. 36" high. } upper deck ✓
 " Deep tank 2-4" " 36" " } ✓
 " Peak " 2-4" " 18" " Fore Deck ✓

all air pipes when not fitted with ganges, closed by wood plugs & canvas covers. ✓

Particulars of Gangway Cargo and Coaling Ports:—

None

Particulars of Scuppers and Sanitary Discharge Pipes:—

From upper deck through stinger angle. From poop & bridge decks, Scuppers discharge overboard with open pipes. ✓
 Sanitary discharges and Scuppers from poop & bridge spaces discharge overboard with haws automatic Storm Valves at ship's sides. ✓

Particulars of Side Scuttles:—

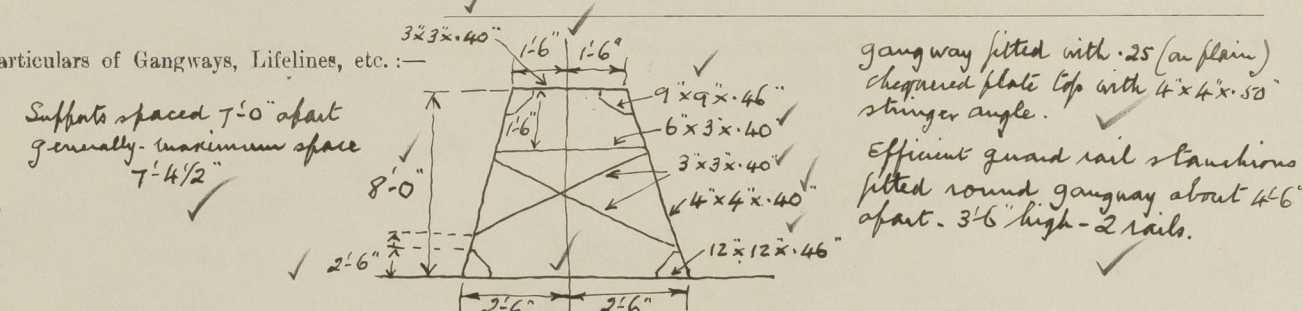
of substantial construction with strong hinged deadlights. ✓

Vertical distance of Sill of lowest Side Scuttle above top of keel None below freeboard deck. ✓

Particulars of Guard Rails:—

at poop, bridge & fore-castle decks - 3'-6" high - 3 rails - stanchions spaced about 4'-9" apart. ✓
 at freeboard deck - open rails ✓
 Bulwarks 3'-6" high x 30" thick; T.B.A. rail angle - 6" bull plate stays, about 6'-0" apart; specially stayed adjacent to erection ends. ✓

Particulars of Gangways, Lifelines, etc.:—



Particulars of Freeing Arrangements.						
	Length of Bulwark Well	Height of Bulwark Part	Size of Freeing Ports	Number each side	Area each side	Rule area each side
After Well	145'-3 3/4" ✓	3'-6" ✓	as sketch ✓	-	open rails for a length of more than half the length of the exposed part of the weather deck	
Forward Well	123'-6" ✓	3'-6" ✓	as sketch. ✓	-		
State position of each freeing port ... (After Well:— Bulwark 3 1/2" flange. 9" x 12" after deck. ✓)						
(F. and A. position and height above deck edge) (Forward Well:—)						
State whether the freeing ports are fitted with shutters, bars, or rails, and give particulars of such:—						
Additional area where sheer is less than standard. ✓						

© 2020

Lloyd's Register Foundation

007559-001X701542

PARTICULARS OF PROTECTION TO OPENINGS, ETC.

HATCHWAYS ON FREEBOARD AND SUPERSTRUCTURE DECKS.										
Description of Hatchway		To Wing Cargo Tanks	To Centre Cargo Tanks	To Fuel Bunkers	To F. & A. Cofferdams	To Fore hold				
Dimensions of Hatchway		6'-0" x 4'-0"	6'-0" x 4'-0"	3'-0" x 3'-0"	manholes 24" x 18"	10'-0" x 6'-3"				
COAMINGS	Height above Deck	12 x 3 1/2 x .45	12 x 3 1/2 x .45	12 x 3 1/2 x .45	Protected by 12" Channel Coamings.	20" .50 Coaming				
	Thickness { Sides	B.A.	B.A.	B.A.						
	Ends									
	Stiffeners ...	✓	✓	✓						
Brackets, Stays										
HATCH BEAMS	Number ...									
	Spacing ...									
Scantling and Sketch										
Bearing Surface										
FORE AND AFTERS	Number ...									
	Spacing ...									
Unsupported Lengths										
Scantling* and Sketch										
Bearing Surface										
HATCH COVERS	Material64" Steel	.64" Steel	.64" Steel	.50 Steel Covers	.50" Steel W.T. Cover				
	Thickness ...	hinged O.T. cover	hinged O.T. cover	hinged O.T. cover		Stiffened.				
	How fitted									
	Bearing Surface									
Spacing of Cleats										
Number of Tarpaulins										
<p>*Are wood fore and afters steel shod at all bearing surfaces? ✓</p> <p>Are battens and wedges efficient and in good condition? <i>yes</i></p> <p>Are tarpaulins in good condition and in accordance with rule requirements? <i>yes</i></p> <p>Are lashings provided in accordance with rule requirements? ✓</p>										

Particulars of any special features:—

Displacement at 28'-0" draught. 17531 tons, Tons per inch 58.29. ✓
 " " 27'-0" " 16832 " " " 57.87. ✓

Endorsement at first survey and at surveys for renewal of Certificate:—

The fittings and appliances are in accordance with the particulars shown on this form (or as now modified) and are in good condition.



Name of Ship *BRITISH CHARACTER*

Freeboard Report Examined
(Date) *29 March 1951*

Signed *[Signature]*