

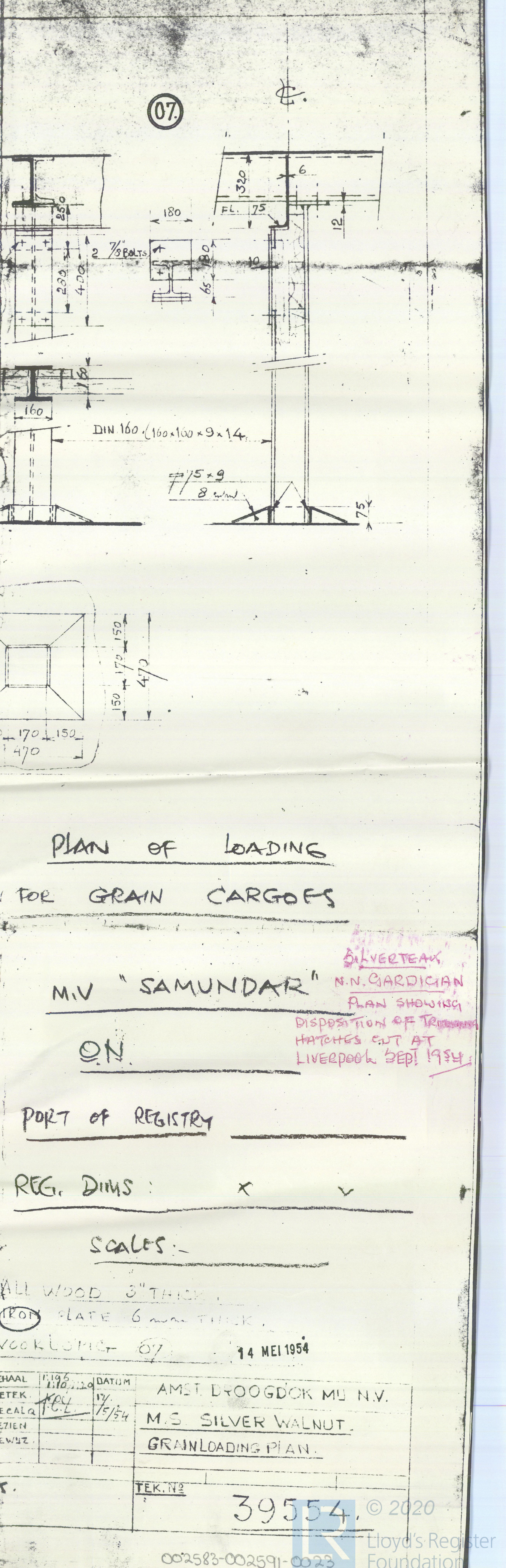
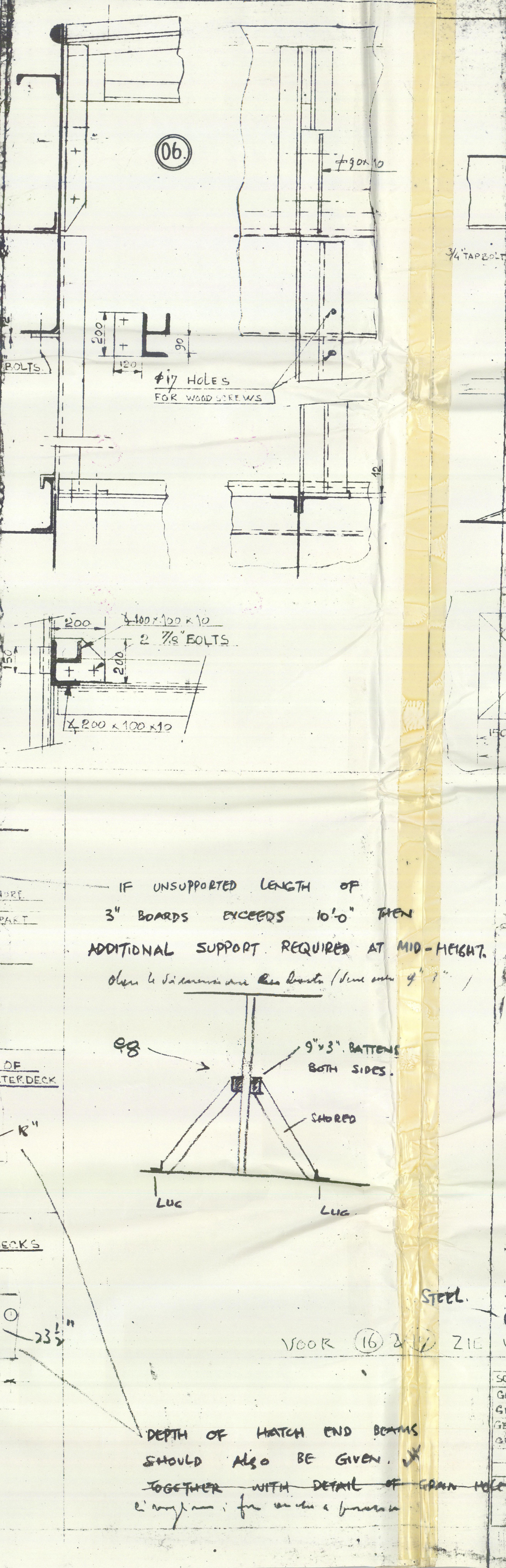
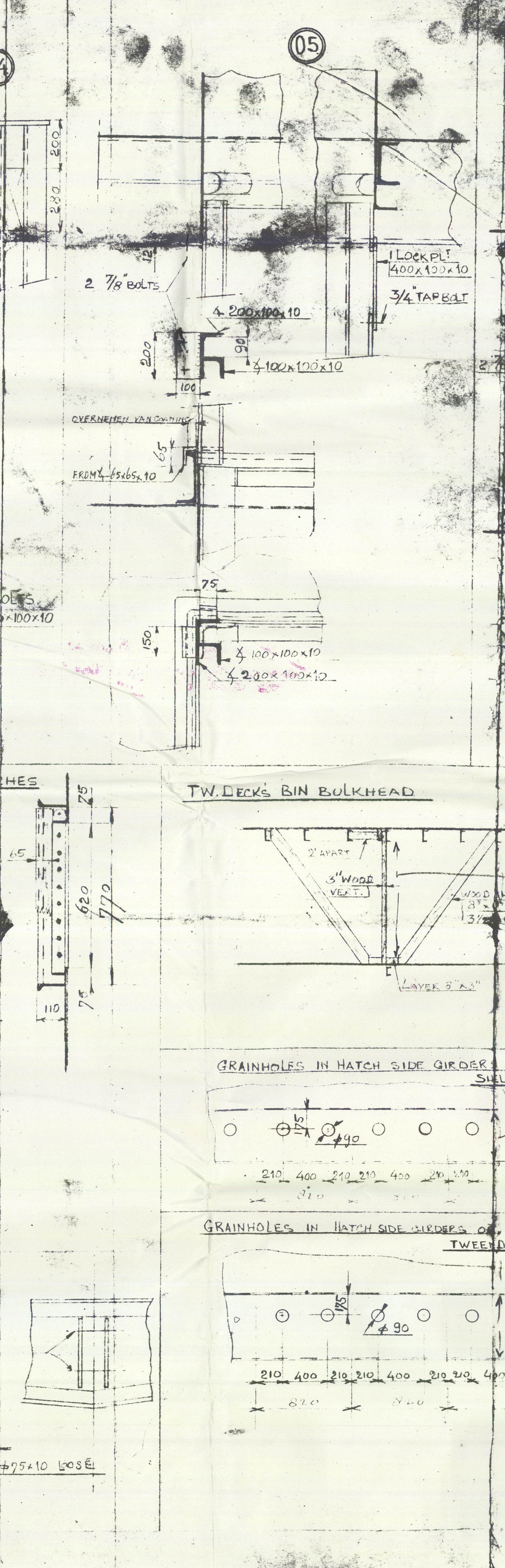
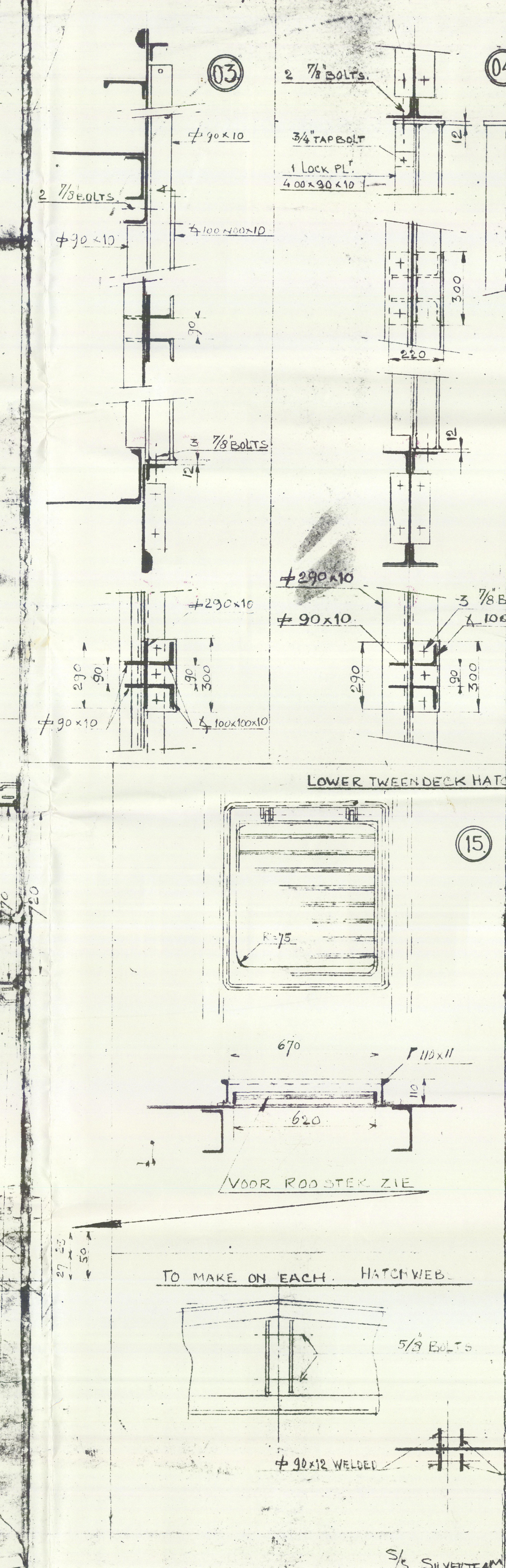
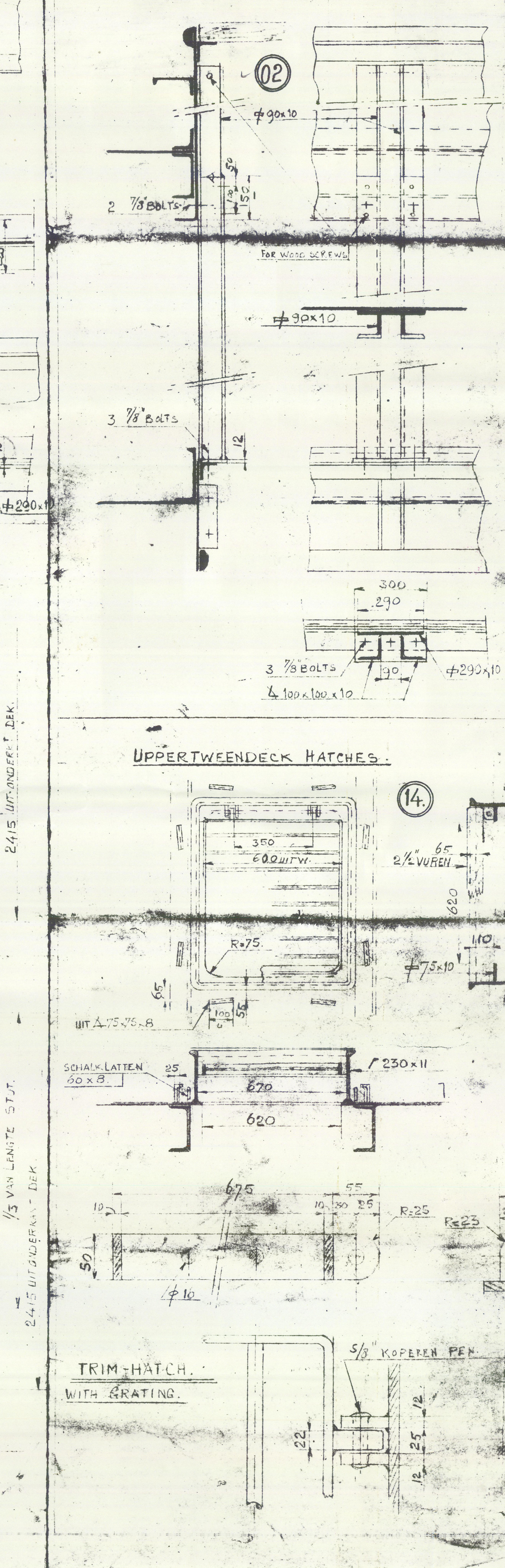
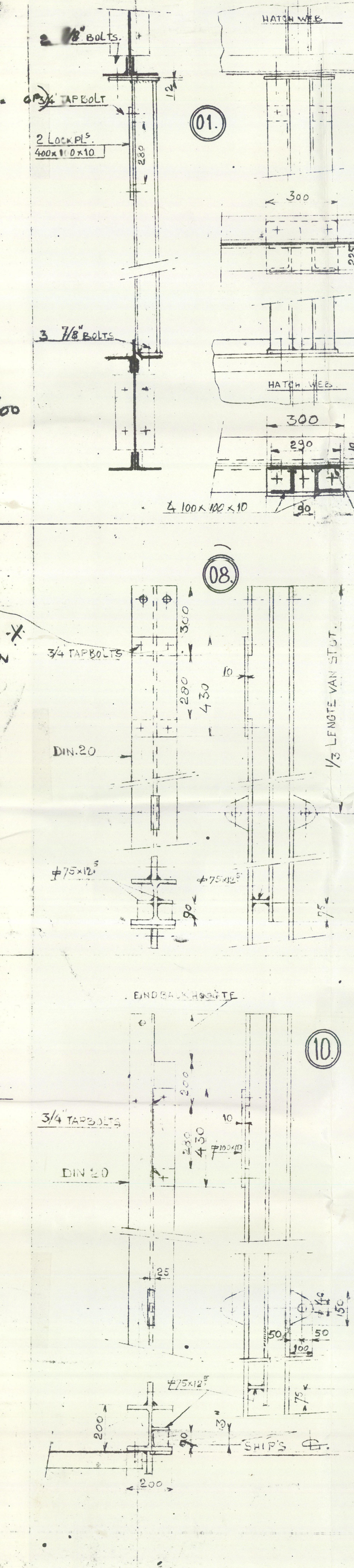
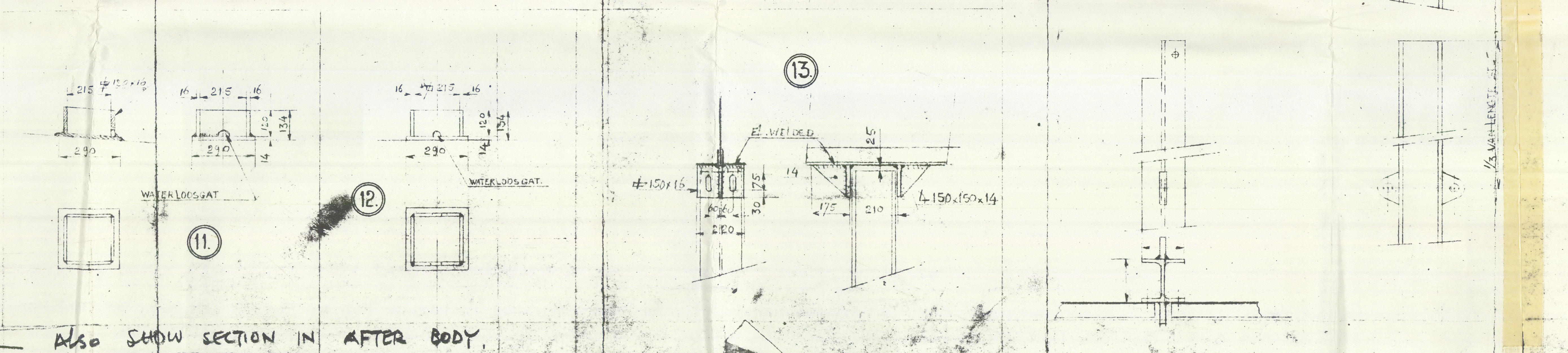
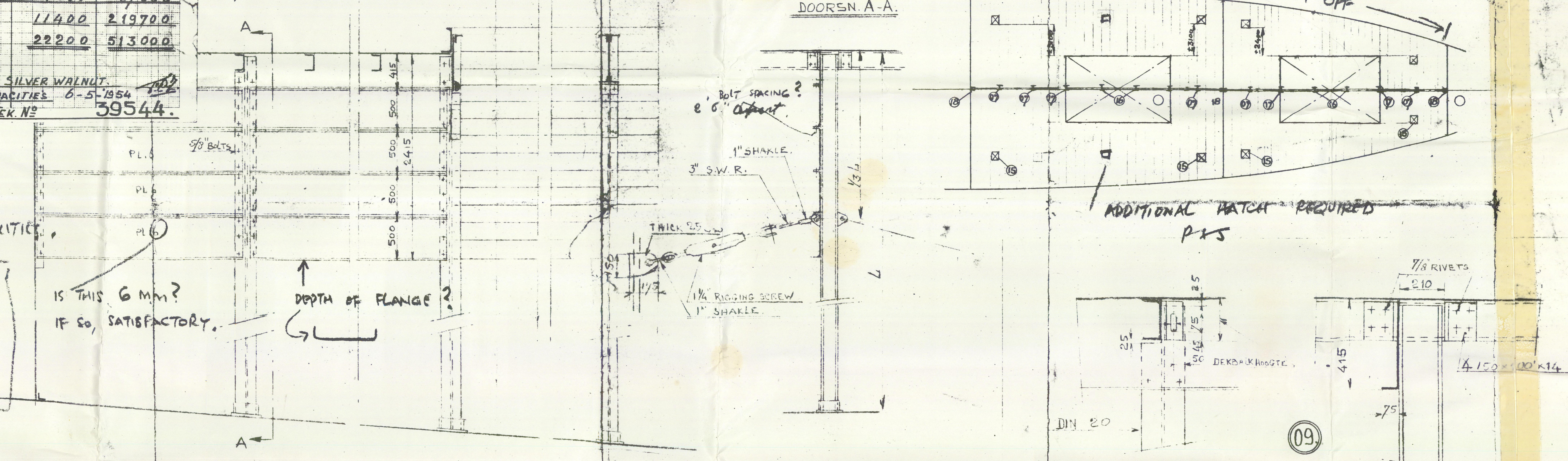
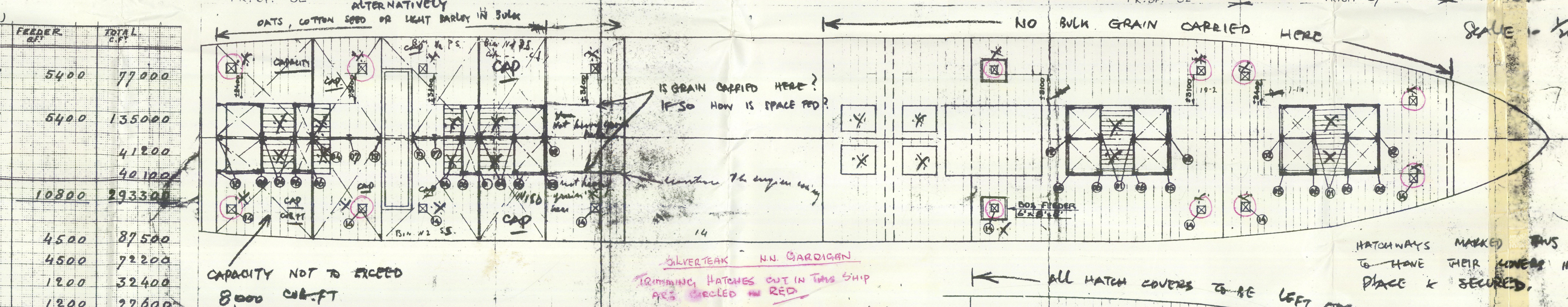
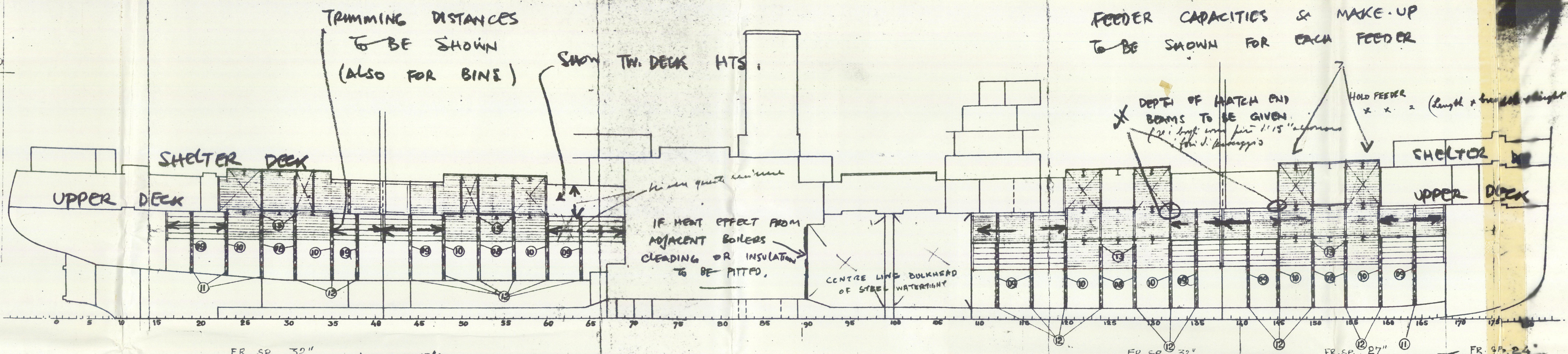
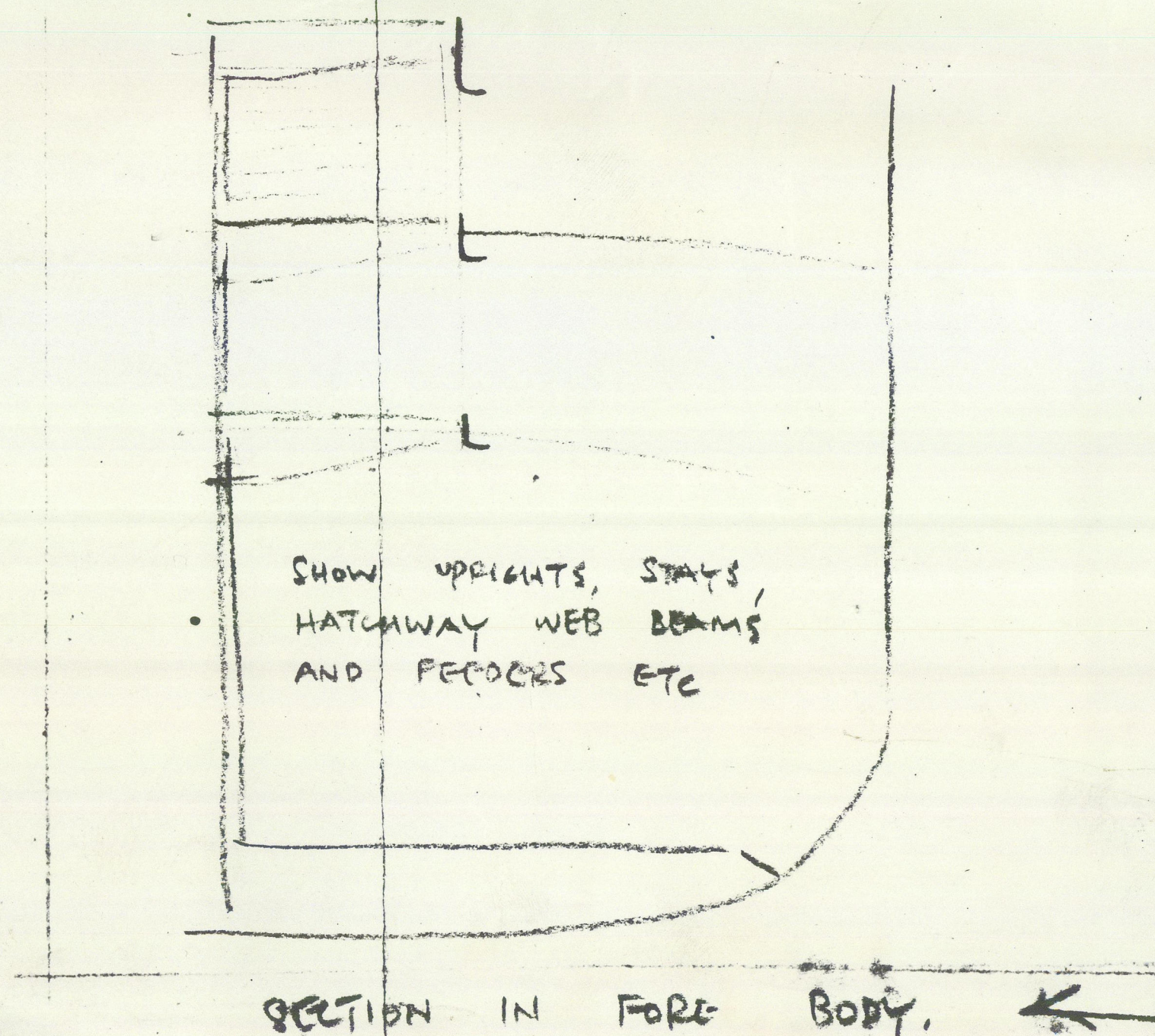
SUMMARY OF CAPACITIES (NET)

COMPARTMENT	CAPACITY	2 1/2" B.	2 1/2" B.	FEEDER	TOTAL
NE 1 HOLD	41800				
NE 1 LOW TW. DECK	26500	71600	1990	5728	77000
NE 2 HOLD	86400				
NE 2 LOW TW. DECK	44200	129600	3240	10368	155000
NE 3 FOR DEPTANK	41200				41200
NE 3 AFT DEPTANK	40100				40100
TOTAL OF FORE SHIP	282500			10800	293300
NE 4 HOLD	83000	2075	6840	4500	87500
NE 5 HOLD	67700	1692	5416	4500	72200
NE 4 UPPER TW. DECK	31200	780	2496	1200	32400
NE 5 UPPER TW. DECK	26400	660	2112	1200	27600
TOTAL OF AFT SHIP	208300	11400	21970		230670
GRAND TOTAL	490800			22200	513000

14 MEI 1954
M.S. SILVER WALNUT
GRAIN CAPACITIES 6-5-1954
TEK. N° 39544

ADD BIN & BIN FEEDER CAPACITIES.

NOTE
Net capacities of holds, bins & compartments are measured out to the ship's plating and not to the bulkhead.
The capacities of all feeders are their actual capacities, after deduction has been made for shifting boards, lashing beams, uprights & all other obstructions.



PLAN OF LOADING FOR GRAIN CARGOES

M.V. "SAMUNDAR"

ON

PORT OF REGISTRY

REG. DIMS: x v

SCALES:

ALL WOOD 3" THICK
(100) PLATE 6 mm THICK
VOOR (16) 2 1/2" ZIE

14 MEI 1954

AMST. D. OOGDOK M. N. V.
M.S. SILVER WALNUT
GRAINLOADING PLAN

TEK. N° 39544

© 2020 Lloyd's Register Foundation