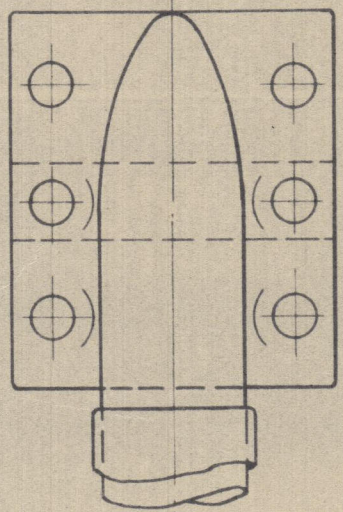
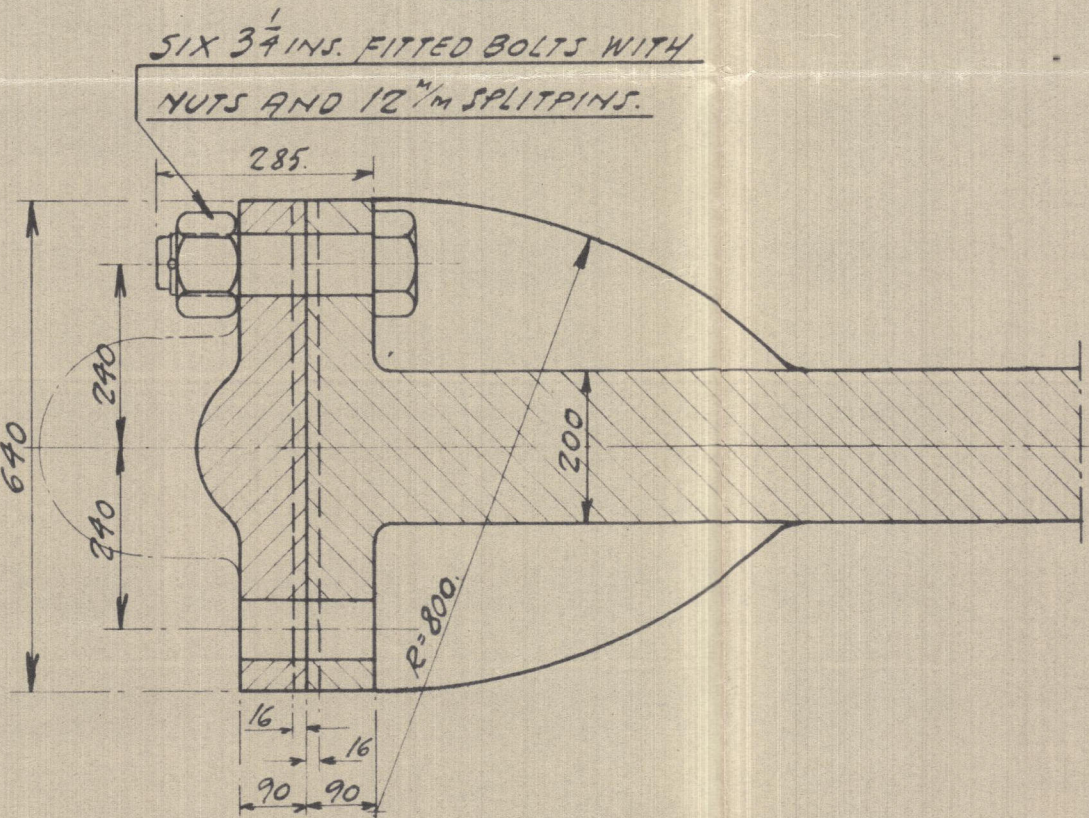


YARD NOS. 77 & 78. RUDDER POST.

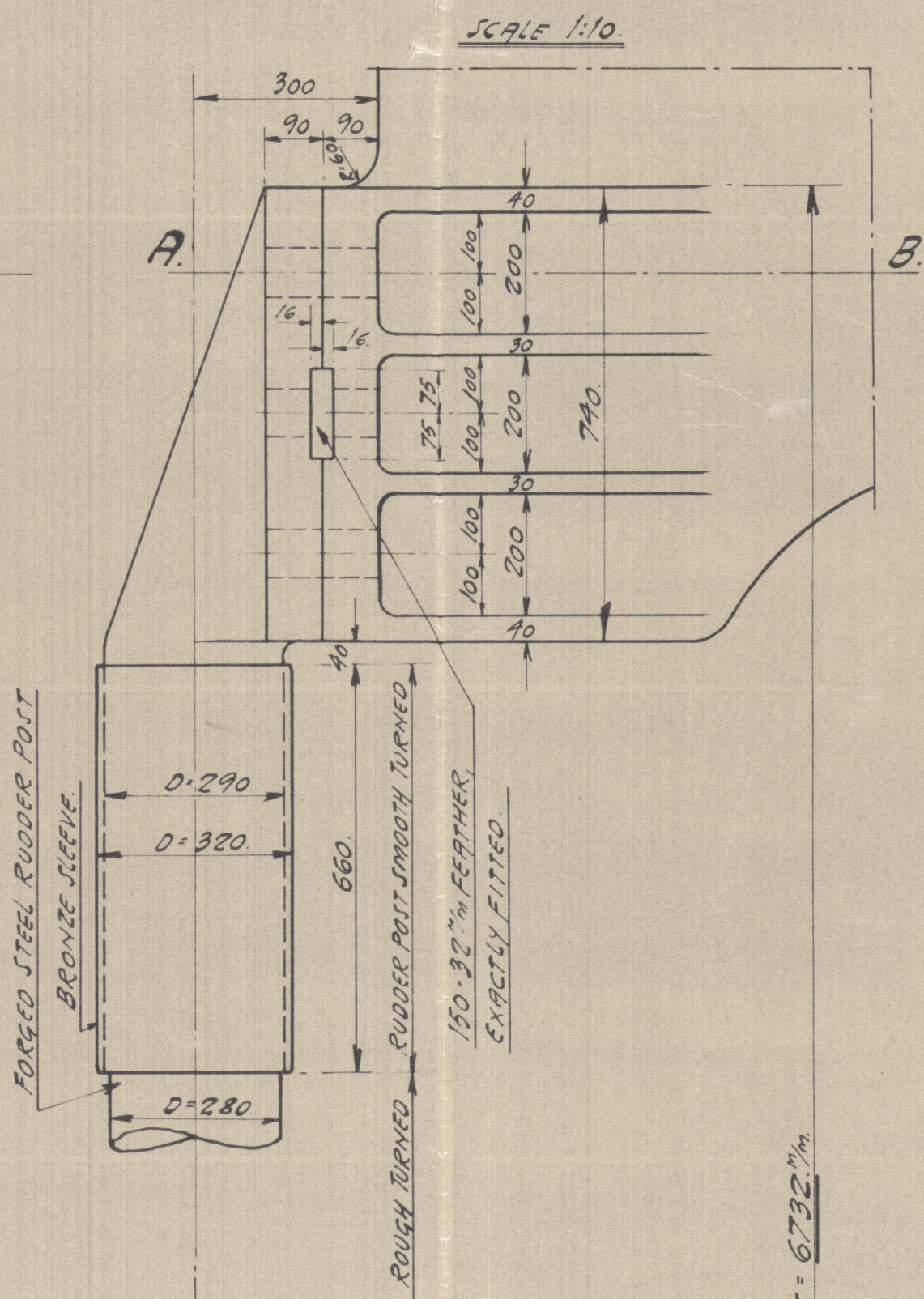
PALM ON RUDDER POST
LOOKING FORWARD
SCALE 1:15



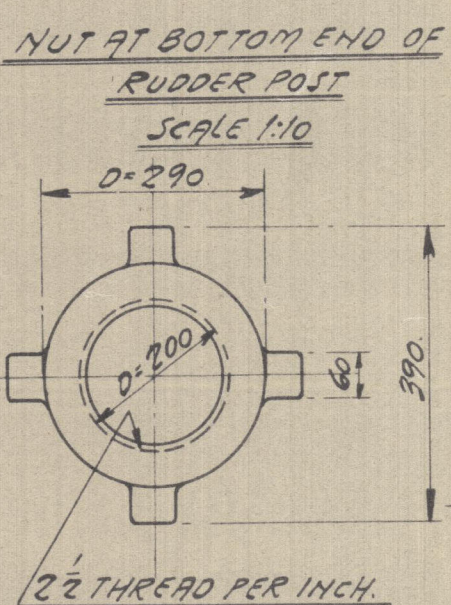
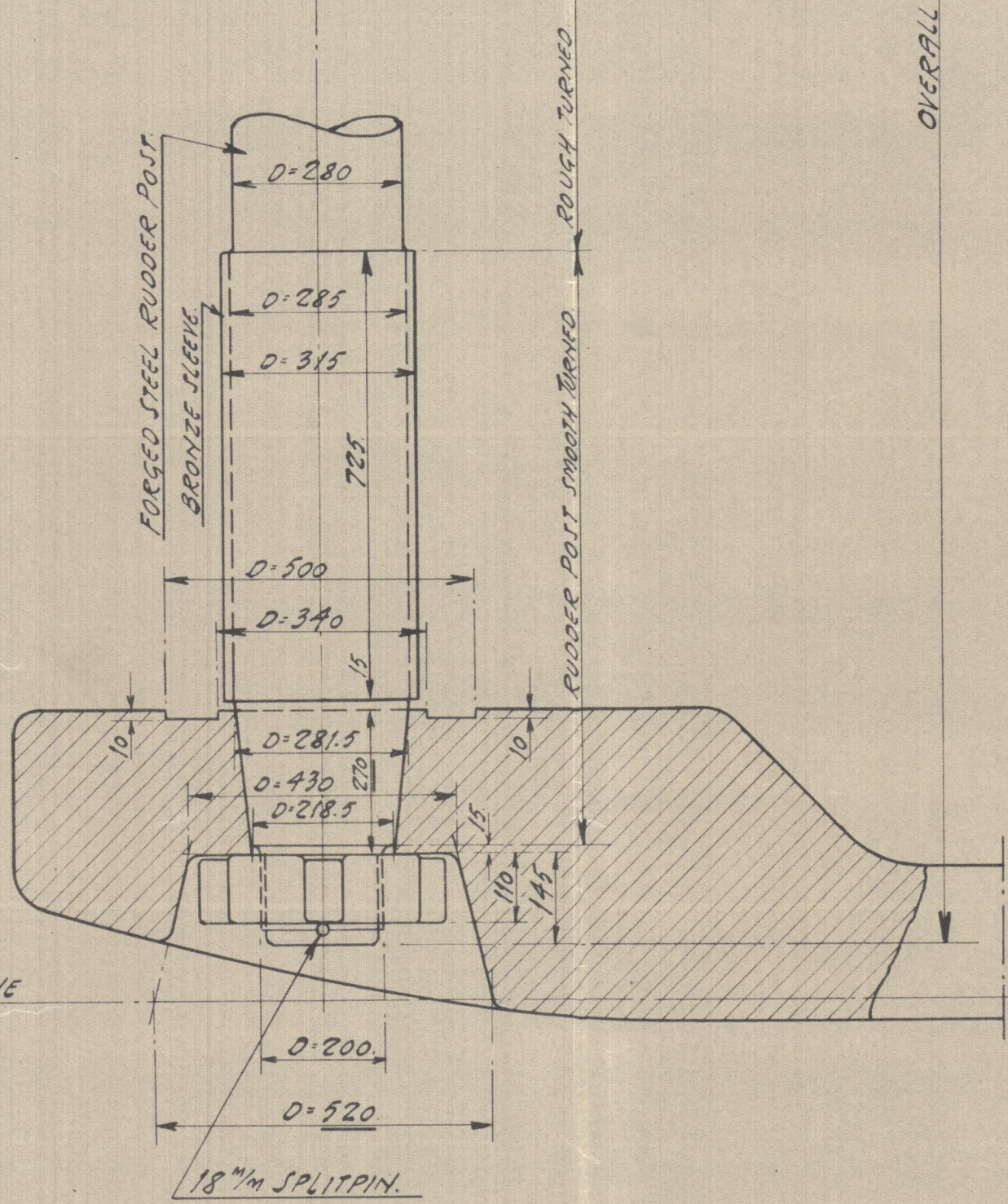
SECTION A-B
SCALE 1:10



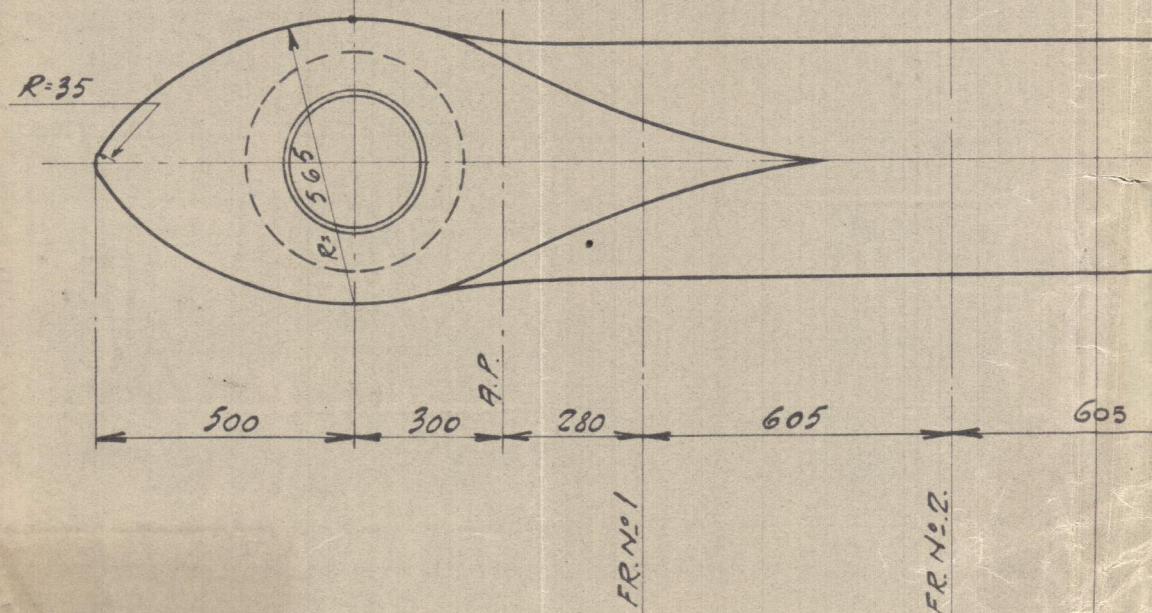
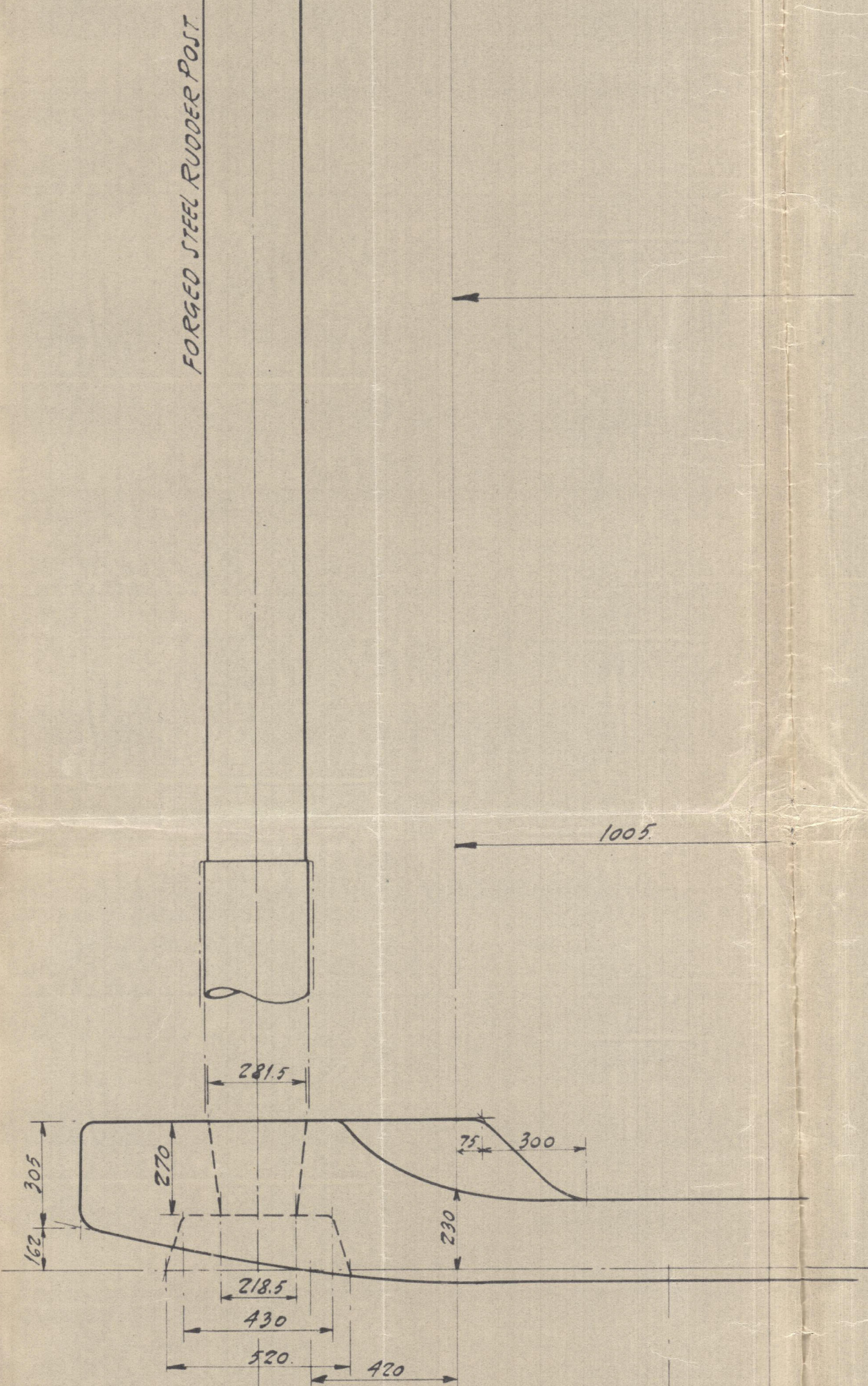
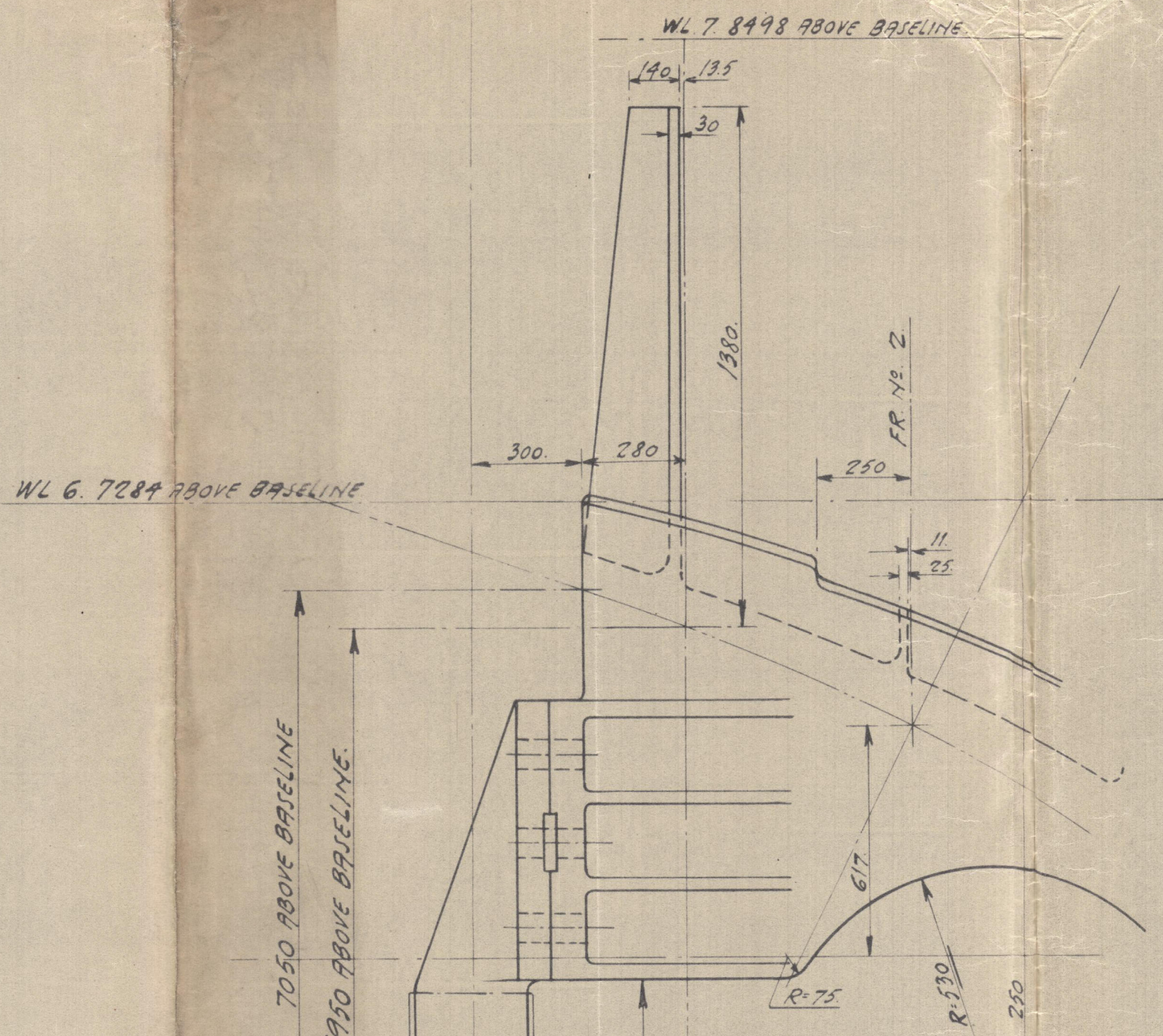
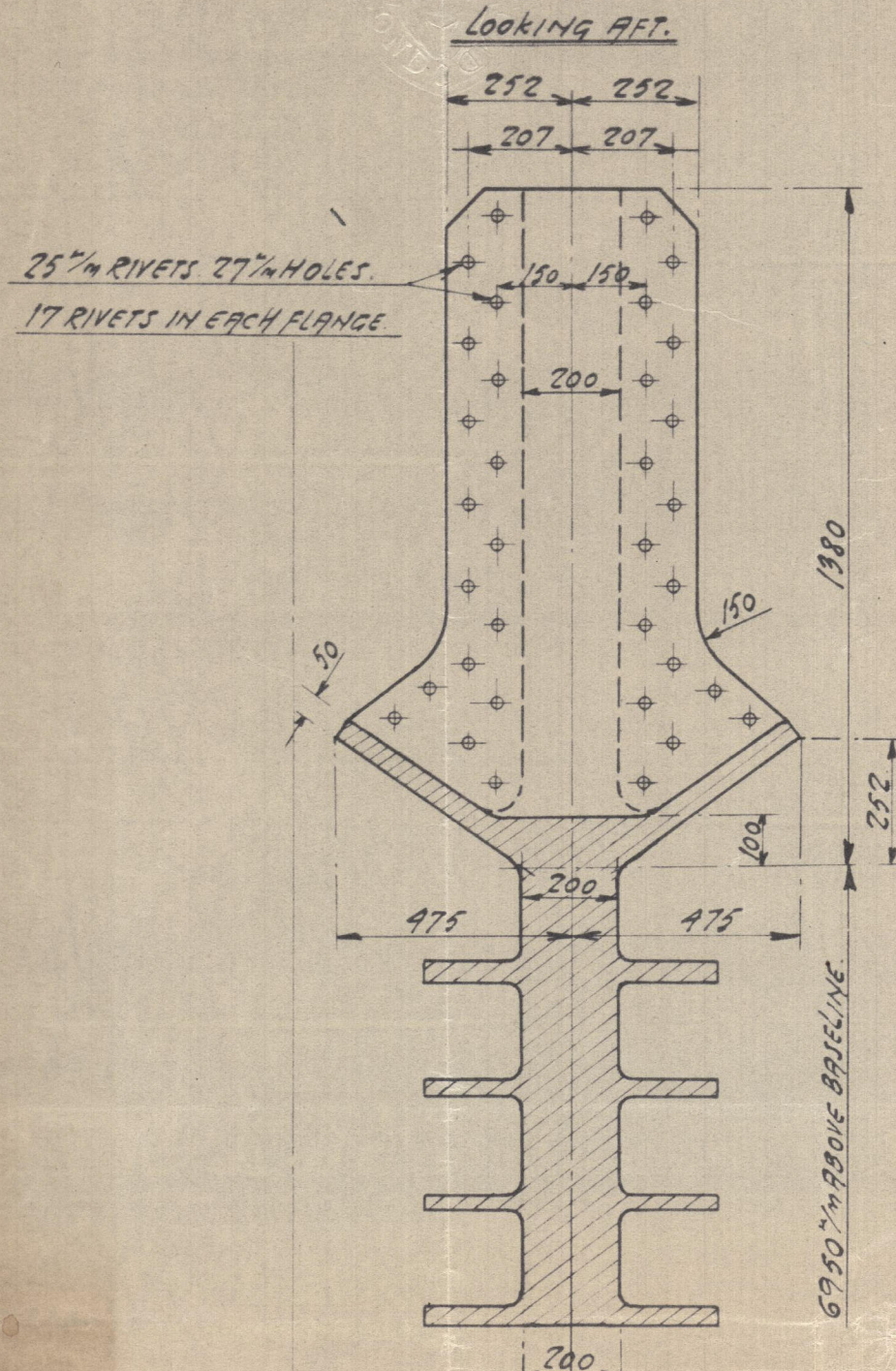
TOP CONNECTION OF RUDDERPOST
SCALE 1:10



BOTTOM CONNECTION OF RUDDER POST
SCALE 1:10



SECTION AT FRAME NO. 1
LOOKING AFT.



ODENSE STAALSKIBSVERFT
VED A. P. MØLLER

15/5 37

7.7.

1:10 & 1:15

10-5-37

RUDDER POST.

© 2021

Lloyds Register

Foundation

DEKBLAD TIL TEGNING NR. 7

002602-002610-0090

Odense Skalskibsværft ved A. P. Møller
Odense.

Yard No. 77.

Rudder Post.

77 only

1781
25 1/2

M.S. "Lucellum" of Liverpool
Eng. Repat No. 10769.

002602-002610-0090



© 2021

Lloyd's Register
Foundation