

# Lloyd's Register of Shipping.

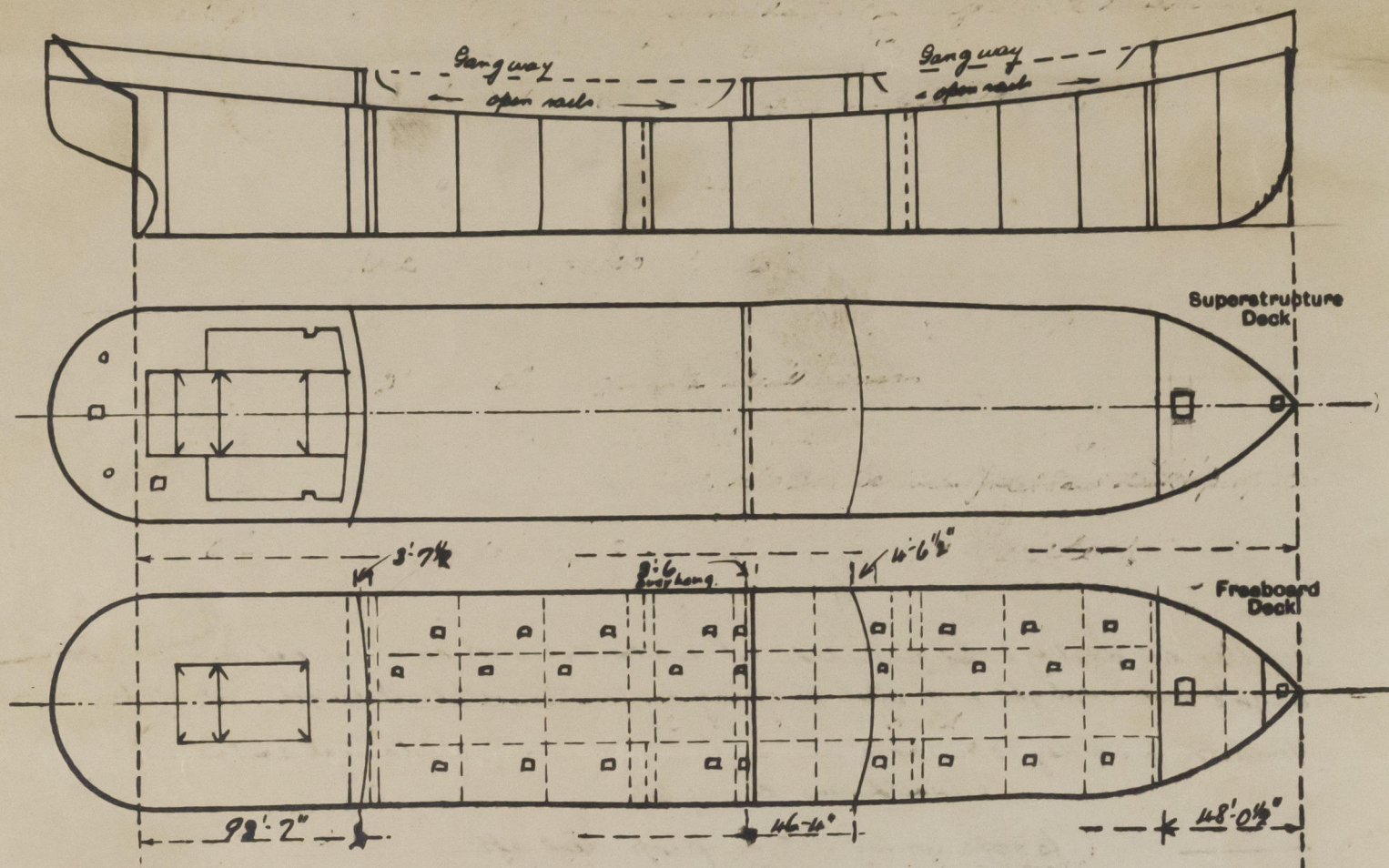
## SURVEYS FOR FREEBOARD.

(CONDITIONS OF ASSIGNMENT.)

F48

Ship's Name FLAMMULINA Empire Industry. Port of Survey Belfast  
 Official Number 168529. Surveyor's Signature Wm Balfour  
 Nationality and Port of Registry British. Belfast. LONDON Date of Survey during construction.

Disposition and dimensions of superstructures, trunks, deckhouses and machinery casings to be inserted in the diagrams and tabular statement: -



Particulars of Superstructures, Trunks, Casings, Deckhouses.

	Coaming	Plating	Stiffeners	Spacing	End Attachments of Stiffeners	Size of Openings	Height of Sills	Height of Casings
Poop Bulkhead ... ..	44	44	10 1/2 x 7/16 A	30	welded up bottom	20' 5" 0" x 13' 6"	18"	7' 6"
Raised Quarter Deck Bulkhead ...	30	30	4 x 2 1/2 x 7/16 A	30	none	20' 5" 0" x 3' 0"	18"	7' 6"
Bridge, After Bulkhead ... ..	44	44	9 x 3 1/2 x 7/16 A	30	welded up bottom	10' 5" 0" x 2' 0"	18"	7' 6"
Bridge, Forward Bulkhead ... ..	30	30	4 x 3 1/2 x 7/16 A	30	none	10' 5" 0" x 4' 0"	13"	7' 6"
Forecastle Bulkhead ... ..	30	30	4 x 3 1/2 x 7/16 A	30	none	10' 5" 0" x 13' 6"	18"	7' 6"
Trunk, Aft ... ..								
Trunk, Forward ... ..								
Exposed Machinery Casings on Freeboard or Raised Quarter Decks ...								
Exposed Machinery Casings on Superstructure Decks ... ..	30	30	4 x 3 1/2 x 32	31"	none	none exposed		7' 6"
Machinery Casings within Superstructures not fitted with Class I Closing Appliances ... ..								
Deckhouses on Flush Deck Ships ...								

Particulars of Closing Appliances (state if capable of being manipulated from both sides).

Poop Bulkhead ... ..	Hinged steel W.T. doors
Raised Quarter Deck Bulkhead ...	
Bridge, After Bulkhead ... ..	one hinged steel W.T. door; two openings with portable steel stiffened plates secured by hook bolts
Bridge, Forward Bulkhead ... ..	Hinged steel W.T. door
Forecastle Bulkhead ... ..	one hinged steel W.T. door; one hinged steel door; one opening with portable steel stiffened plates secured by hook bolts
Exposed Machinery Casings on Freeboard or Raised Quarter Decks ...	
Exposed Machinery Casings on Superstructure Decks ... ..	no openings
Machinery Casings within Superstructures not fitted with Class I Closing Appliances ... ..	
Deckhouses on Flush Deck Ships ...	All hinged doors capable of being manipulated from both sides



# PARTICULARS OF PROTECTION TO OPENINGS, ETC.

HATCHWAYS ON FREEBOARD AND SUPERSTRUCTURE DECKS.									
Description of Hatchway		Fore & aft deck		Freeboard deck		Poop			
Dimensions of Hatchway		Fore peak	Fore hold	Longitudinal	Transverse	Longitudinal	Transverse	Longitudinal	Transverse
		30' x 30"	8' x 8'	4'6" x 8'6"	24" x 18"	39' x 39"			
COAMINGS	Height above Deck	9' 8"	30"	30"	6' 0"	9' 8"			
	Thickness { Sides	.46	.50	.50	.46	.46			
	Thickness { Ends								
	Stiffeners								
Brackets, Stays			Trunked						
HATCH BEAMS	Number								
	Spacing								
	Scantling and Sketch								
	Bearing Surface								
FORE AND AFTERS	Number								
	Spacing								
	Unsupported Lengths								
	Scantling and Sketch								
Bearing Surface									
HATCH COVERS	Material	Steel	Steel	Steel	Steel	Steel			
	Thickness	.50	.50	.50	.50	.50			
	How fitted	hinged	hinged	hinged	hinged	hinged			
	Bearing Surface	W.T.	W.T.	O.T.	O.T.	O.T.			
Spacing of Cleats		Toggle	Toggle	Toggle		Toggle			
Number of Tarpaulins		18 apart	18 apart	15 apart		18 apart			
<p>*Are wood fore and afters steel shod at all bearing surfaces? ✓</p> <p>Are battens and wedges efficient and in good condition? ✓</p> <p>Are tarpaulins in good condition and in accordance with rule requirements? ✓</p> <p>Are lashings provided in accordance with rule requirements? ✓</p>									

Particulars of any special features:—

Endorsement at first survey and at surveys for renewal of Certificate:—

The fittings and appliances are in accordance with the particulars shown on this form (or as now modified) and are in good condition.



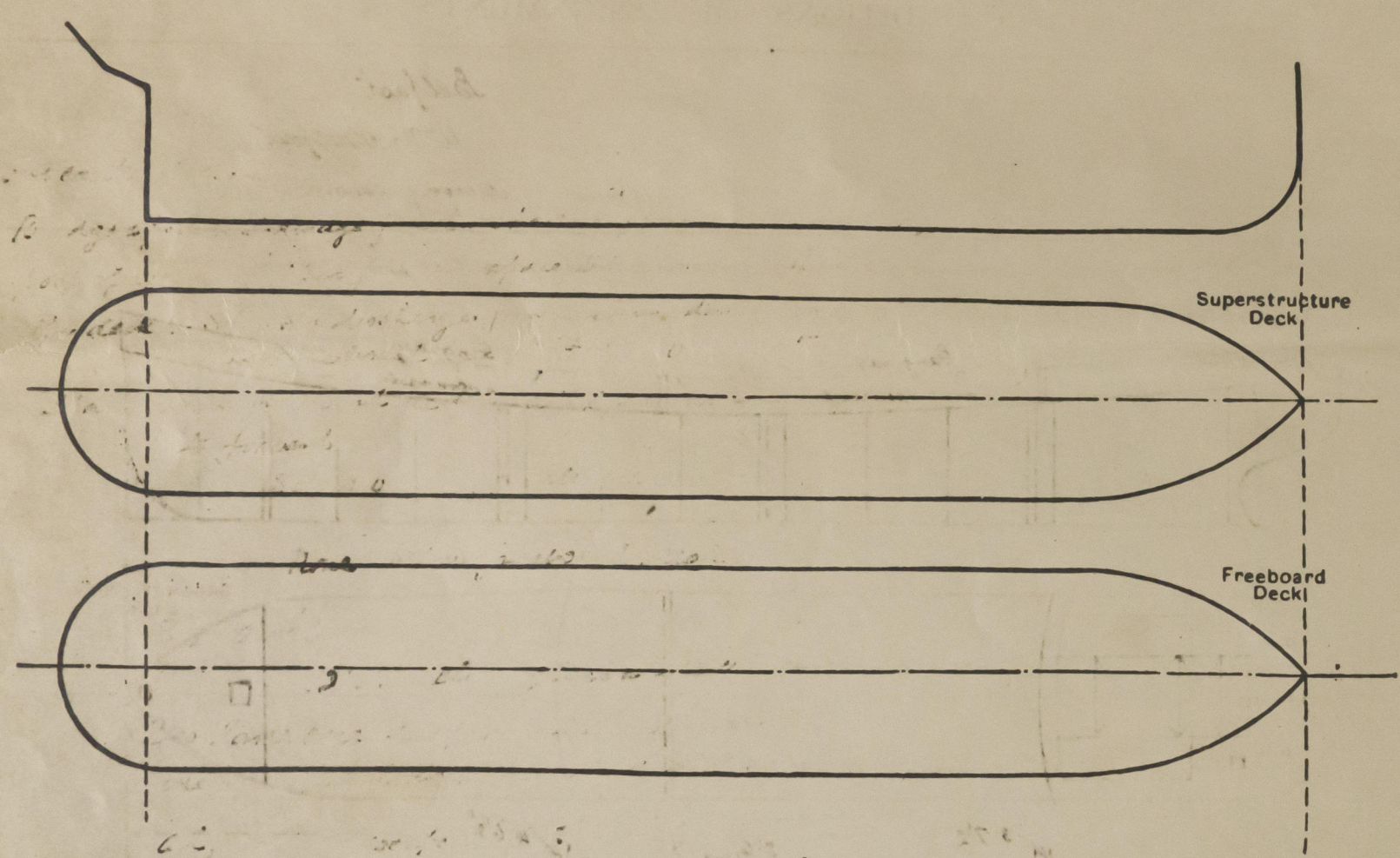
© 2021

Lloyd's Register Foundation



PARTICULARS OF PROTECTION TO OPENINGS, ETC.

The following diagrams should be used to indicate the positions of cargo and coaling hatchways, gangway, cargo and coaling ports, ventilators, companionways, etc., which would affect the seaworthiness of the ship:-



Particulars of hiddle, funnel and ventilator coamings, engine room skylight and other openings in machinery casing tops and their means of closing:-  
Hiddle on donkey boiler provided with substantial steel cover hinged and secured.  
Engine room skylight is of steel of strong construction fitted with hinged steel flaps.  
Ventilator to donkey boiler space and engine room are of substantial construction situated on casing top.

Particulars of Hatch, Bunker Scuttles:- 6 rope locker P15 in poop deck aft.  
The openings have a 9" B.A. coaming with flanged steel cover fitted with hemp packing secured by spindle, strong back and butterfly nut.

Particulars of Companionways:- One door in fore bulkhead to pump room 60" x 24" sill 18" hinged steel w.t. door secured by toggles. Access to pump room (Cargo) in strong steel deadhouse, one each well house 7'6" high. 32 plating stiffeners 6x3x30 B.A. in front, 4x2 1/2 x 5/16 in side to aft and ahead 27'6" x 30" door 58" x 30" with 8" hinged steel w.t. door secured by toggles. In deadhouse a poop, aft and door leading to stairway to deck below, hinged solid wood door 27'6" x 18" sill 18".

Particulars of Ventilators in exposed positions on freeboard and superstructure decks:-  
On fore castle deck: 7'6" dia. 7'0" dia. 2 @ 6" dia. 30" x 36" rule thickness to spaces in fore castle and below freeboard deck.  
On bridge deck: 7'0" 6" dia. 30" x 32" B.A. in bridge.  
On poop deck:- 2 @ 10" dia. 6 @ 6" dia. 30" x 36" rule thickness to keelson & steering gear 15" S.N.V. 8" x 14" cast steel 36", 4 upper & lower tiered decks.  
One well:- 2 @ 24" dia. derrick ports vents to pump room apparently supported.  
Aft well 2 @ 24" dia.  
Boat deck 6", 8", 10", 12" dia. 30" x 36" rule thickness to poop tiered decks.  
Low ventilators on fore and poop provided with w.t. steel covers or wood plags and canvas covers.

Particulars of Air Pipes in exposed positions on freeboard, raised quarter, or superstructure decks:-  
On fore castle deck:- 10 1/2" to fore peak; 4 @ 4" to deep tank 30" high.  
On freeboard deck:- fore well 2 @ 8" to fore peak, 6 ft. a poop well and deep tank. aft well 2 @ 8" to fore peak, 6 ft. a poop well and deep tank.  
On poop deck 2 @ 4" to oil fuel bunkers; 2 @ 2 1/2" to aft peak; 4 @ 2 1/2" to F.W. tanks 10 2 1/2" to main tank; 10 2 1/2" to oil tank; all 30" high.  
On Coaling top:- 2 1/2" to 4" dia. from tank in eng space all 18" above coaling top.  
Air pipes on fore castle, freeboard deck and poop deck provided with wire gauge or canvas cover or wood plags.

Particulars of Gangway Cargo and Coaling Ports:-

None.

Particulars of Scuppers and Sanitary Discharge Pipes:-

From freeboard deck in wells: scuppers cut through gunwale angle.  
Fore castle space: 1 1/2" hole P15 in fore bulkhead with hinged flap.  
Bridge space: drainage from this space by means of 1 1/2" holes in aft bulkhead.  
poop space:- scuppers from this space led overboard with storm valves at ship's side.  
Upper deck:- Sanitary discharges from accommodation a bridge deck led overboard above freeboard deck with storm valves at ship's side.  
Spaces below freeboard deck drain to engine room bilge and to drain into fore hold.  
Storm valves of malleable cast iron.

Particulars of Side Scuttles:-

None below freeboard deck.  
8', 10' clear glass through deck in fore hold, & poop.  
12" dia clear glass in deadhouse.  
Also large size escape scuttles fitted where required by Rules or regulations one in shell of strong construction, at stern between freeboard deck & poop deck, all, including escape scuttles, fitted with hinged deadlocks.

Vertical distance of Sill of lowest Side Scuttle above top of keel

None below freeboard deck.

Particulars of Guard Rails:-

On poop, bridge & fore castle and between bulwarks in well 3'-8" high 3 inch, stanchions 4'-6" to 5 ft apart.

Particulars of Gangways, Lifelines, etc:- Fore aft gang way width 7'-0" high, channel stanchions 6'3" x 3'3" P15 connected by 3'3" x 3/8 transverse angles spaced 4'-0" apart. Gangway plated 32 with transverse strips welded to plating with rivets, 3 and side. Gangway supported by bracing to deck 4' x 4 1/2" angles spaced 8'-0" apart and spaced 5'-3" transverse at deck. Supports braced transverse by 3'3" x 3/8 angle diagonals and longitudinally by tier 3 1/2' x 3 1/2' x 3/8 angles fitted diagonally in ultimate space.

Particulars of Freeing Arrangements.						
	Length of Bulwark	Height of Bulwark	Size of Freeing Ports	Number each side	Area each side	Rule area each side
After Well	152'-4" ... at poop 15 ft at bridge 57 ft	3' 8"	○ 3'-0" × 1'-3"	1 1	over 50% open mesh	✓
Forward Well	130'-8" ... at bridge 16 ft fore 27 ft	3' 8"	○ 3'-0" × 1'-3"	1 1	over 50% open mesh	✓
State position of each freeing port ... ..			After Well:—			
(F. and A. position and height above deck edge)			Forward Well:—			
State whether the freeing ports are fitted with shutters, bars, or rails, and give particulars of such:—						
Additional area where sheer is less than standard.						