

26-2-37

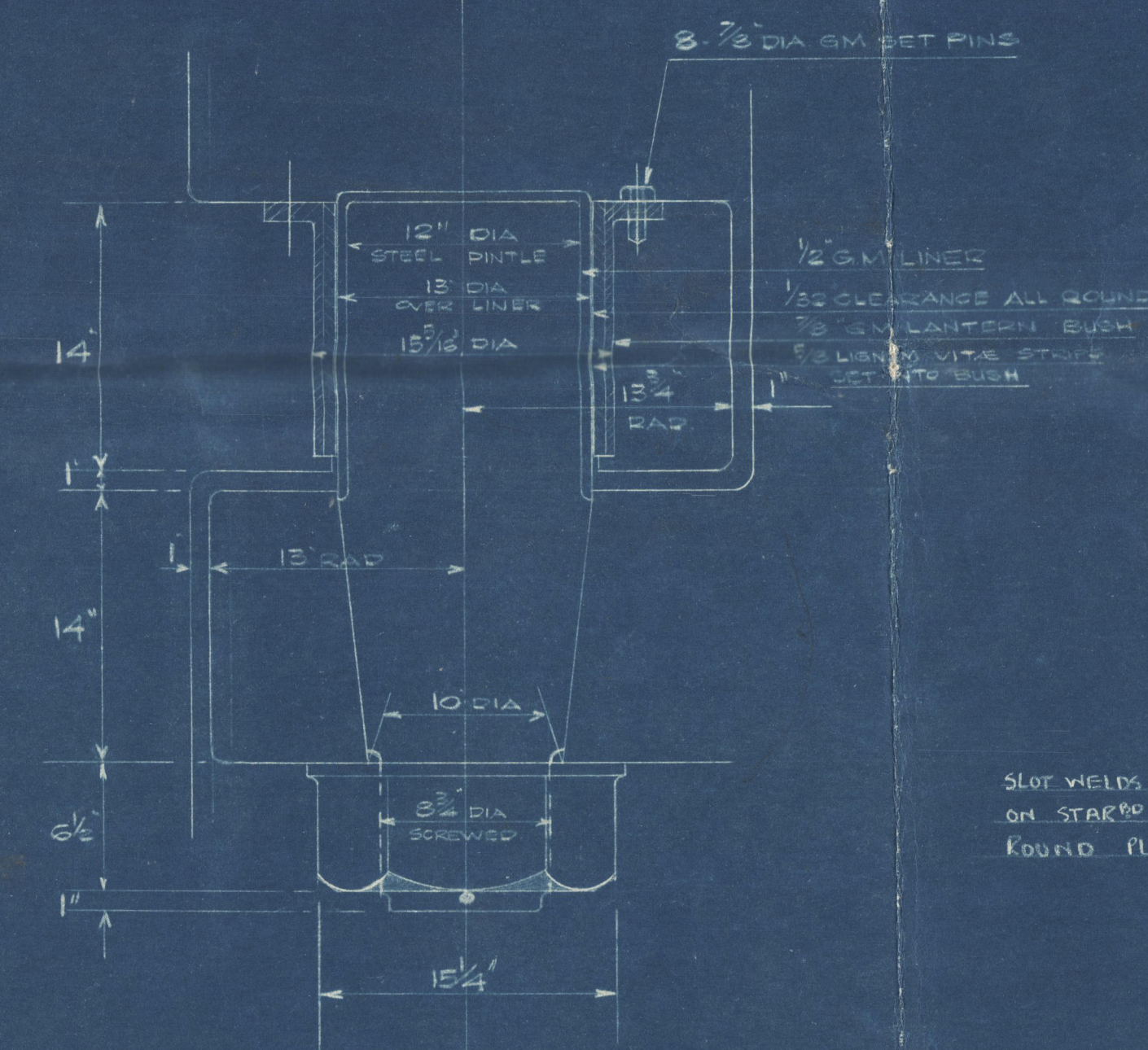
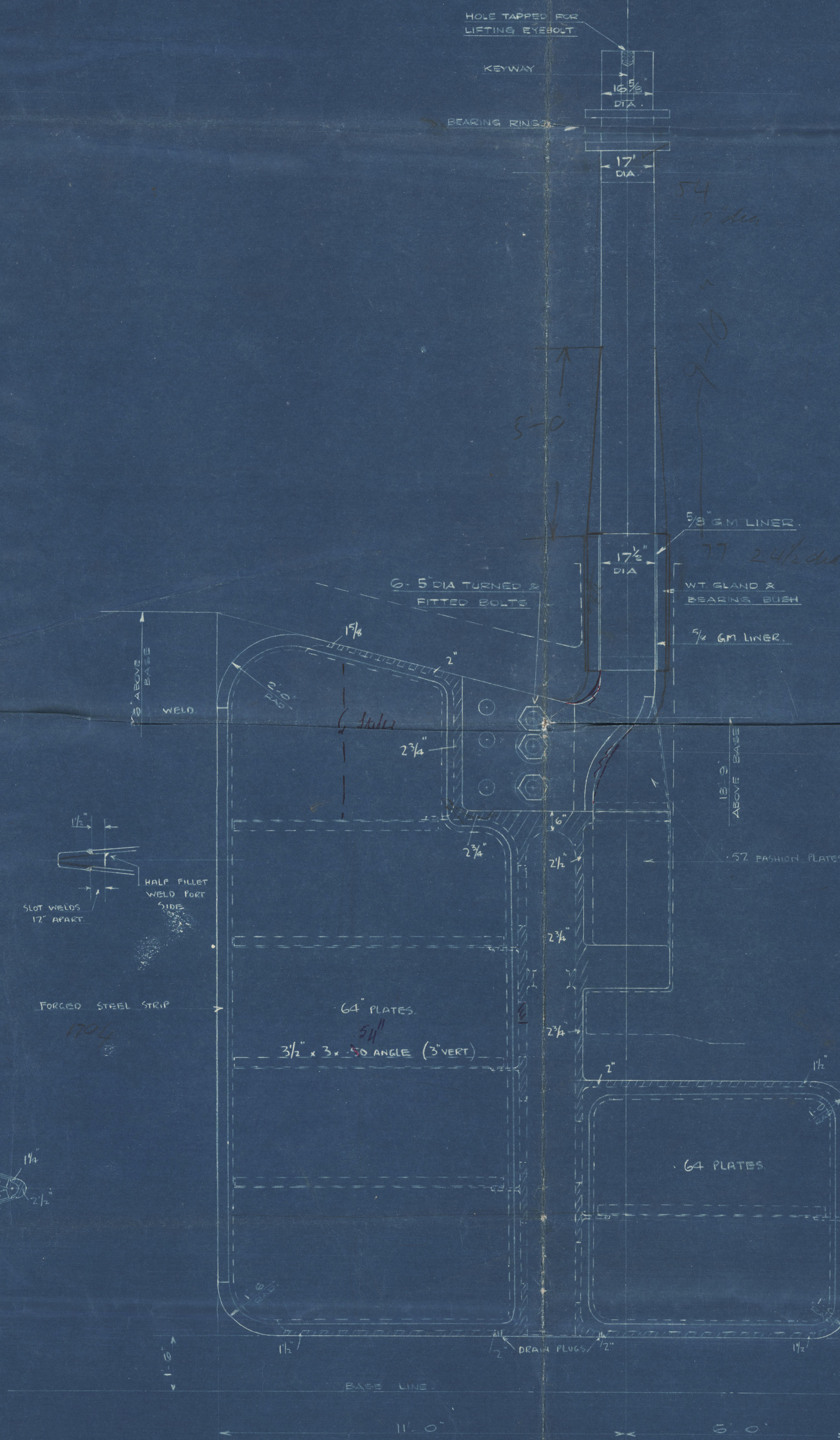
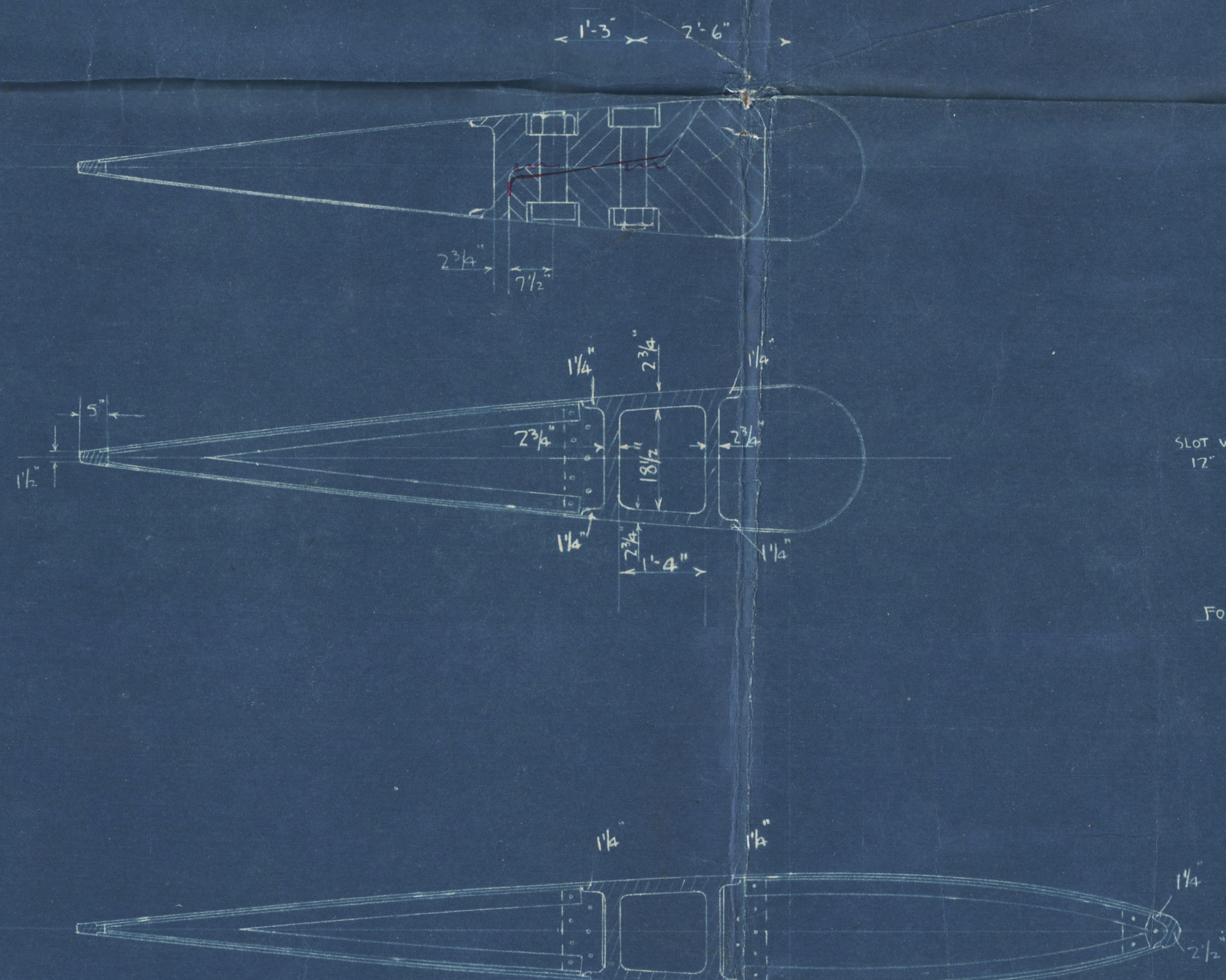
N^{os} 987 & 1006

RUDDER.

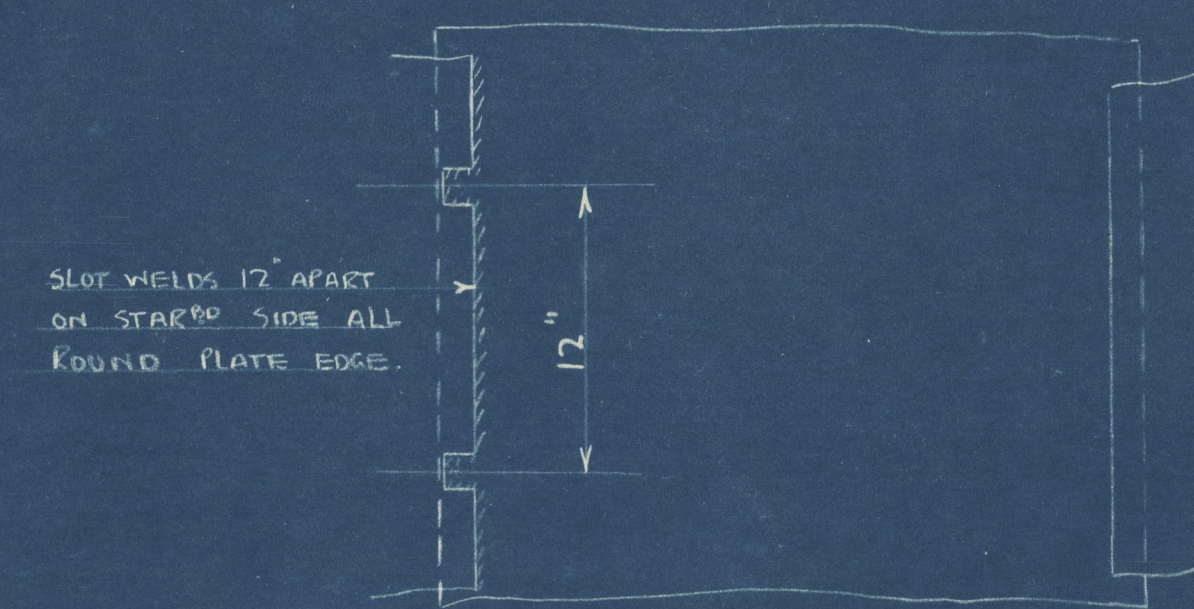
SCALE - $\frac{1}{2}$ " = ONE FOOT.

MATERIAL - RUDDER STOCK - FORGED STEEL.
RUDDER FRAME - MILD STEEL CASTING.
TESTS LLOYDS AND BOARD OF TRADE.

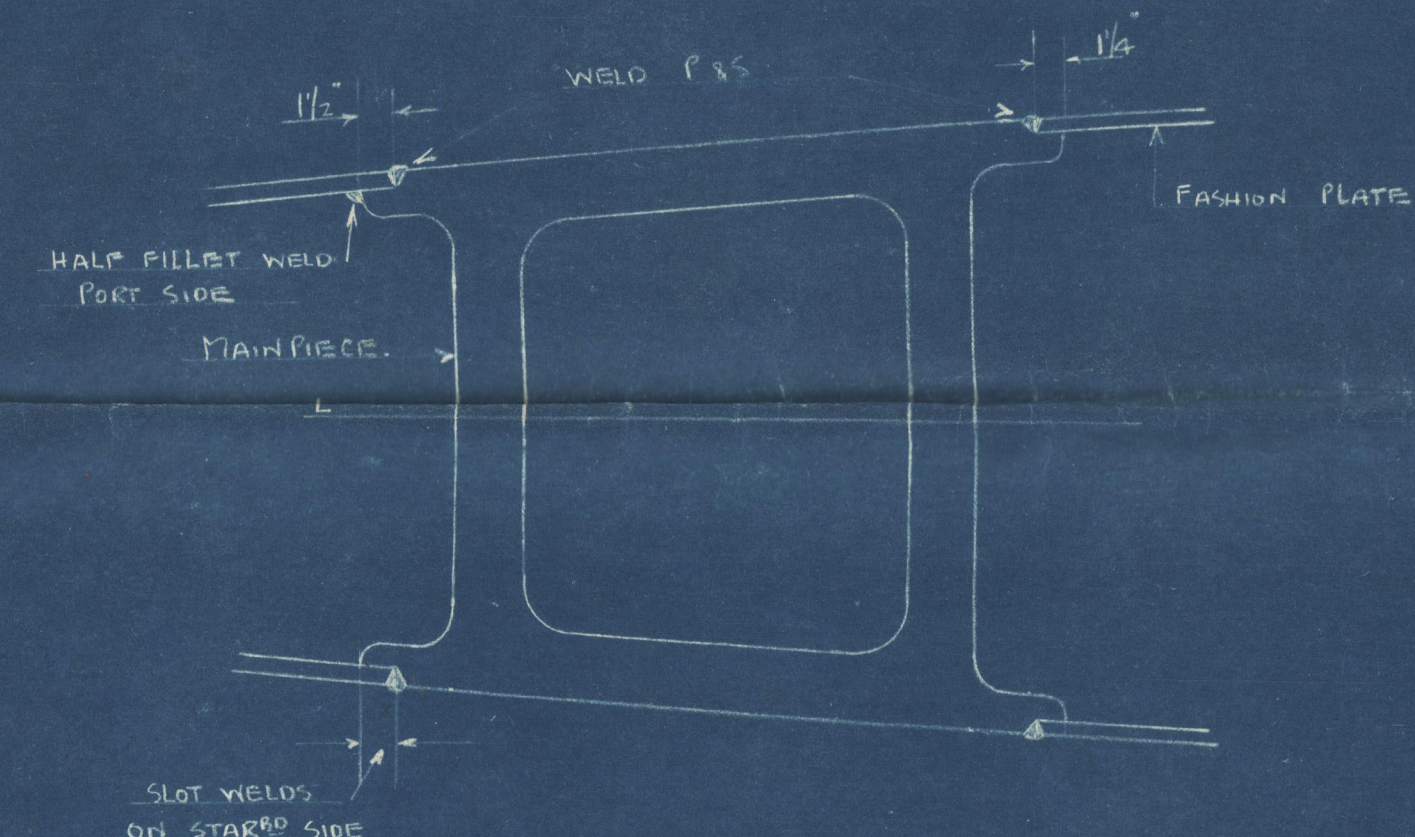
SPEED OF VESSEL = 19 KNOTS.
MAX. ANGLE OF HELM = 35°.
TOTAL EFFECTIVE AREA = 244 sq ft.
AREA COEFFICIENT = $\frac{244}{500 \times 25 \times 25} = 0.81$



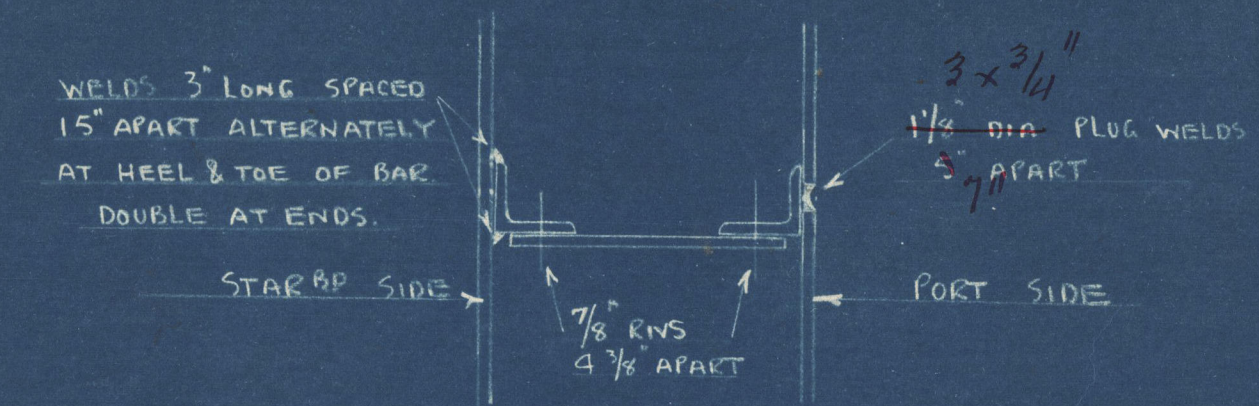
DETAIL OF PINTLE
SCALE - $\frac{1}{2}$ " = ONE FOOT



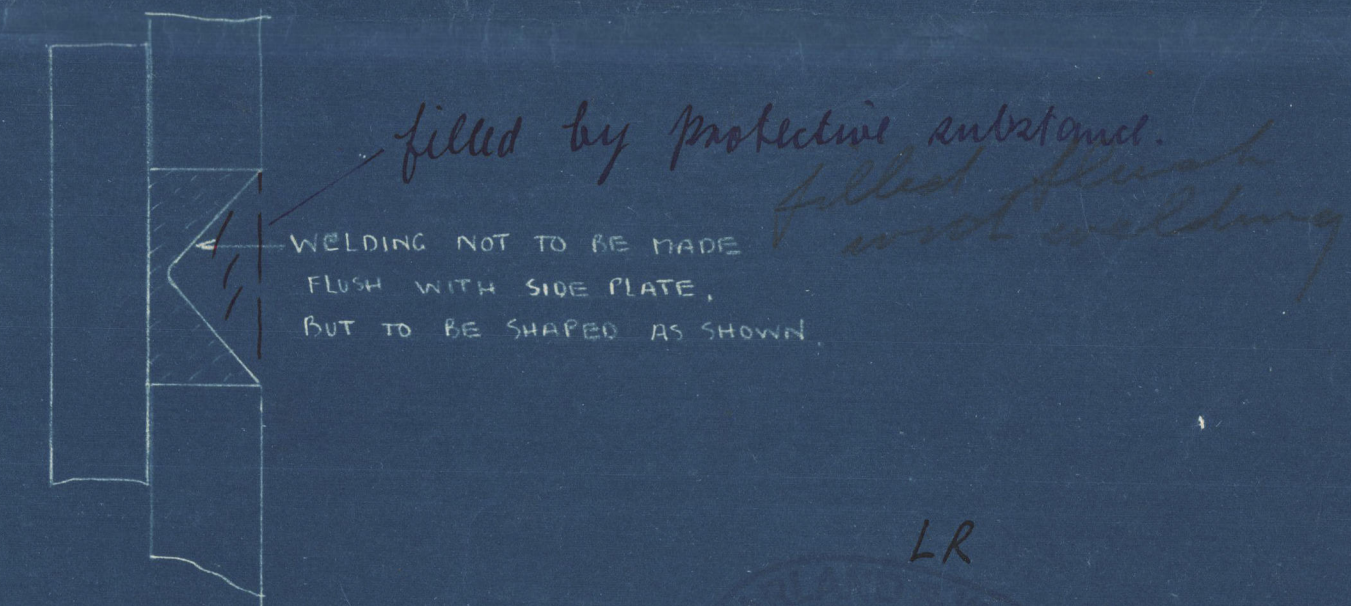
ELEVATION, STARBOARD SIDE



WELDING OF PLATES TO MAINPIECE



WELDING OF STIFFENERS TO SIDE PLATES



DETAIL OF PLUG WELD

LR
17-2-37
16

27.9.37

LR

002630-002630-0001

HARLAND & WOLFF

N^{os} 987 & 1006

RUDDER

(4)

M/M. 2630

987. DURBAN CASTLE.

BEL. RPT. 12,276.

1006 PRETORIA CASTLE.

BEL. RPT. 12,363

002630-002638-0001



© 2020

Lloyd's Register
Foundation