

10.11.36

# PROPOSED STERNFRAME.

Nº 237-8.

SCALE:-  $\frac{1}{2}$ " = 1 FOOT. DETAILS: 1" = 1 FT.

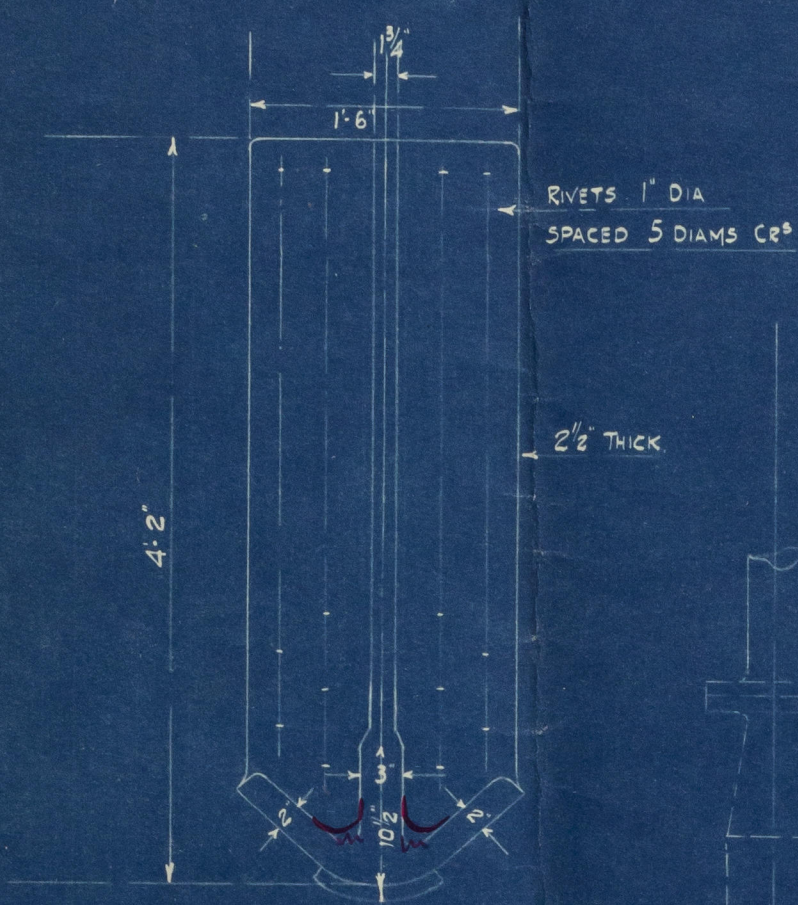
TO BE OF CAST STEEL.

L x D = 15828.

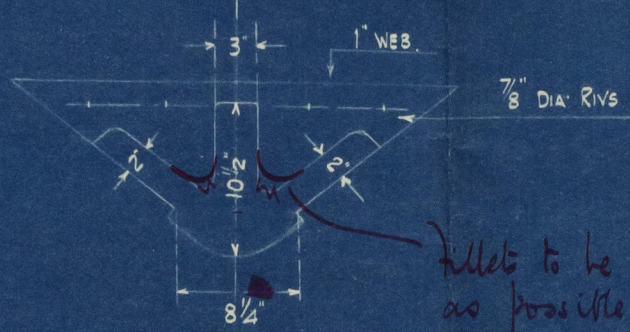
[424 x 37.33]

LLOYDS SURVEY

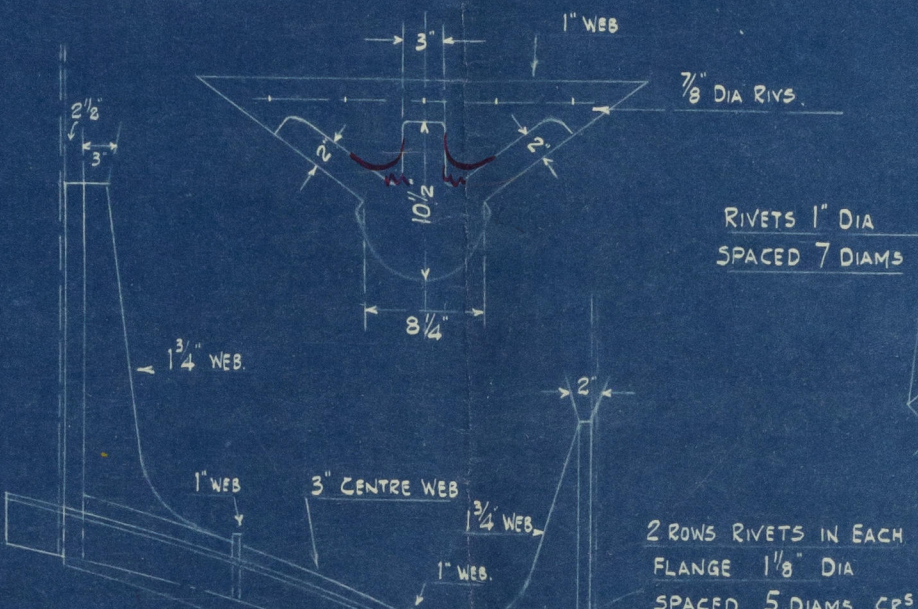
SECTION AT TRANSOM



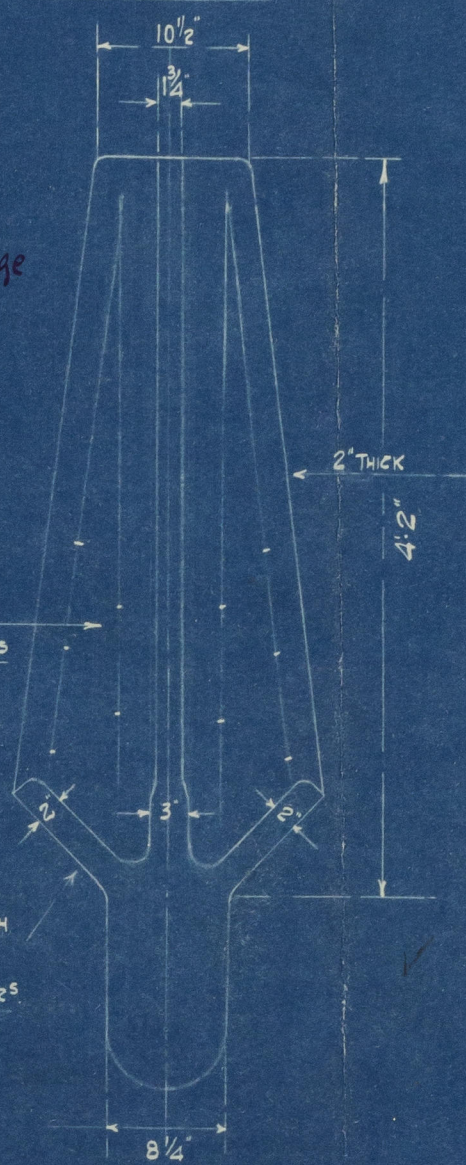
SECTION AT Nº 1 FRAME



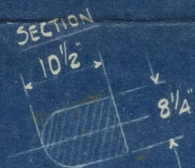
SECTION AT Nº 2 FRAME



SECTION AT Nº 3 FRAME



SEE SEPARATE PLAN  
OF BALANCED REACTION  
RUDDER.



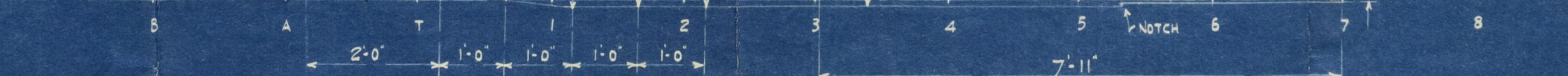
DETAIL OF BOSS

2 ROWS OF RIVETS ABOVE  
BOSS 1 1/8" DIA  
SPACED 5 DIAM<sup>s</sup> APART CR<sup>s</sup>



3 ROWS OF RIVETS BELOW  
BOSS 1 1/8" DIA  
SPACED 5 DIAM<sup>s</sup> APART CR<sup>s</sup>

BASE LINE 7



FRAME SPACING 2' 0"

NOTCH

WM PICKERSGILL & SONS LTD  
SHIPBUILDERS  
SOUTHWICK  
SUNDERLAND.

WM PICKERSGILL & SONS LTD  
No 7374  
SUNDERLAND  
DATE 18/11/36  
IRON & STEEL SHIPBUILDERS



Pickersells

No 237/8/40

Sterngramm

"Northleigh"

SUNDERLAND RPT. NO. 32195



"CHULMLEIGH"

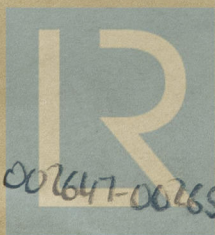
SUNDERLAND RPT. NO. 32379

"GOODLEIGH"

SUNDERLAND RPT. NO. 32494

"WINKLEIGH"

SUNDERLAND RPT. NO. 32867.



© 2021

Lloyd's Register  
Foundation

002647-002652-0047