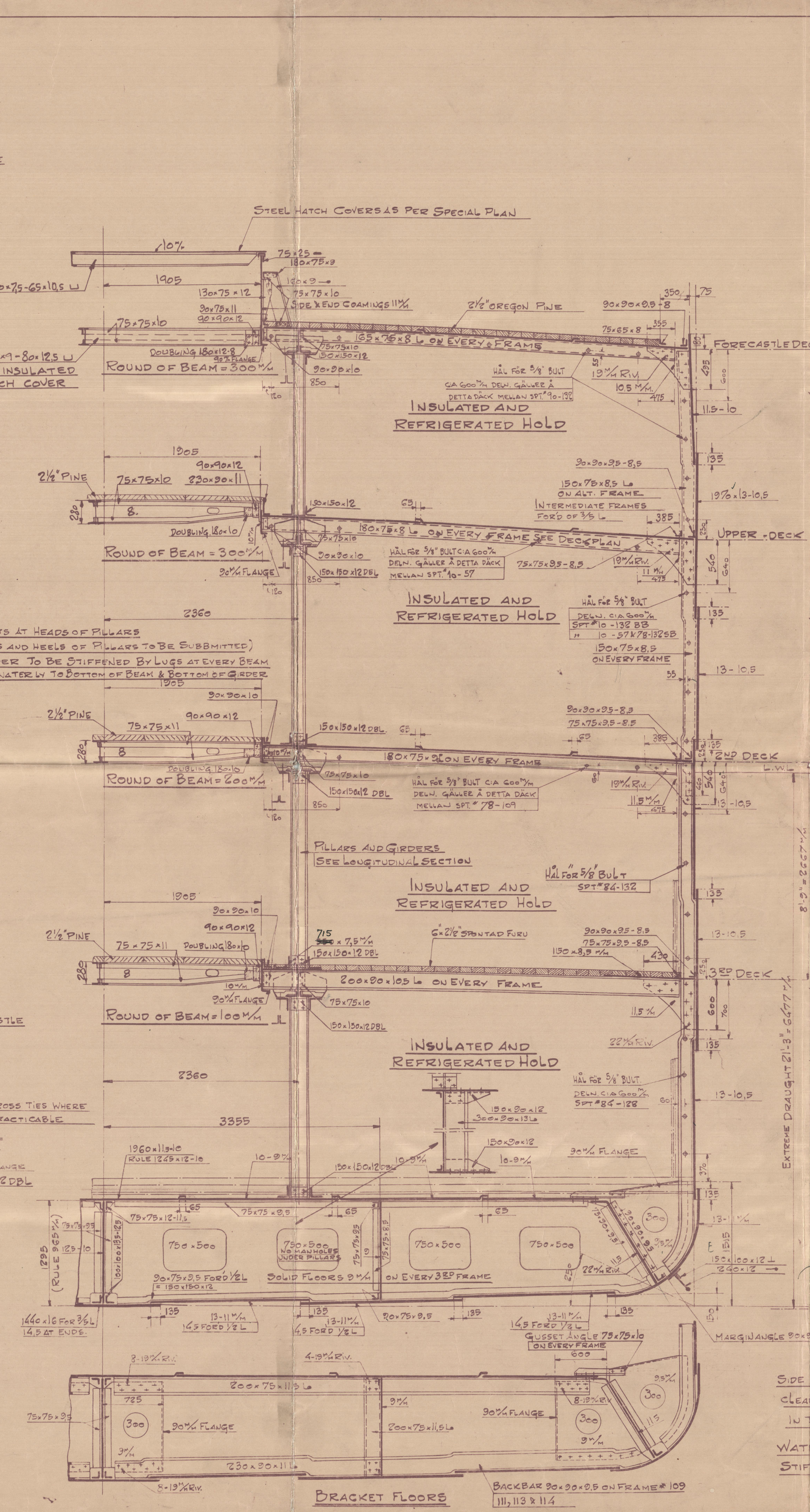
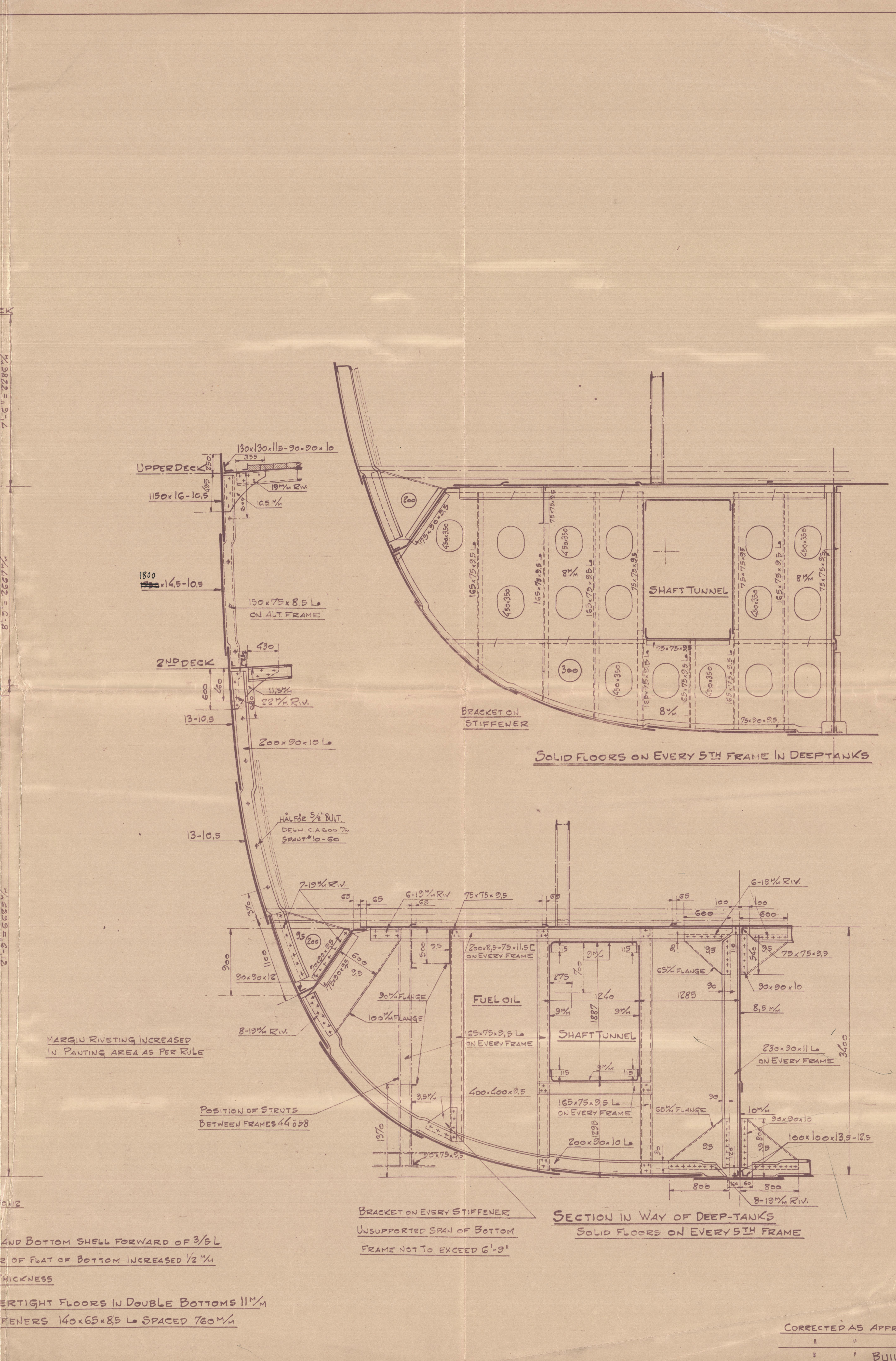


SECTION IN MOTORROOM



BACKET FLOORS



SECTION IN WAY OF DEEP-TANKS  
SOLID FLOORS ON EVERY 5TH FRAME

EQUIPMENT "V"  
3 BOWER ANCHORS STOCKLESS 2355 Ks  
1 STREAM " " INCL STOCK 825 " "  
495 METR. 50.5% (2") STUD CHAIN CABLE  
165 " " 14 " (4 1/2") STEEL WIRE  
220 " " 102 " (4") " " " "  
4 x 165 " " 64 " (2 1/2") " " " "

ALL BULBANGLES NBSBA 1924  
OR NEW GERMAN STANDARDS 1927

DIMENSIONS  
LENGTH P.P. = 330'-0" = 100.582 M.  
BREADTH MOULDED = 47'-0" = 14.329 M.  
DEPTH TO UPPER-DECK = 30'-6" = 9.296 M.  
" " " 2ND DECK 21'-9" = 6.629 M.  
D " " = 30'-2" = 9.205 M.  
L x D " = 2966 FEET = 926 M.  
L x (B x D) " = 25476 " = 2367  
V/D " = 10.82  
ACTUAL D = 8'-9" = 2.667 M IN MOTORROOM 17'-6" = 5.334 M.  
EN " = 26956 FEET = 2504 M.

1/11 AUGUSTENBURG  
M.M. 2694

CLASS: LLOYDS 100 A WITH FREEBOARD  
FOR AN EXTREME DRAUGHT OF 21'-3"

Sothenburg 1st copy report No. 9511

As fitted Plan

AKTIEBOLAGET GÖTAVERKEN		DESIGN NO.	1935
" " " " " " " "		CONSTR. NO.	1935
M/S 446		DATE	10-2-33
MIDSHIP-SECTION			
RYDAR AV	SKALA	1:25	
KALKER AV	DATUM	10-2-33	
GRANSKAD			
CORRECTED AS APPROVED BY LLOYD'S 10-3-1933			
DET NOESKE VERITAS FOR 1/477			
BUILT.			