

28 FEB 1949

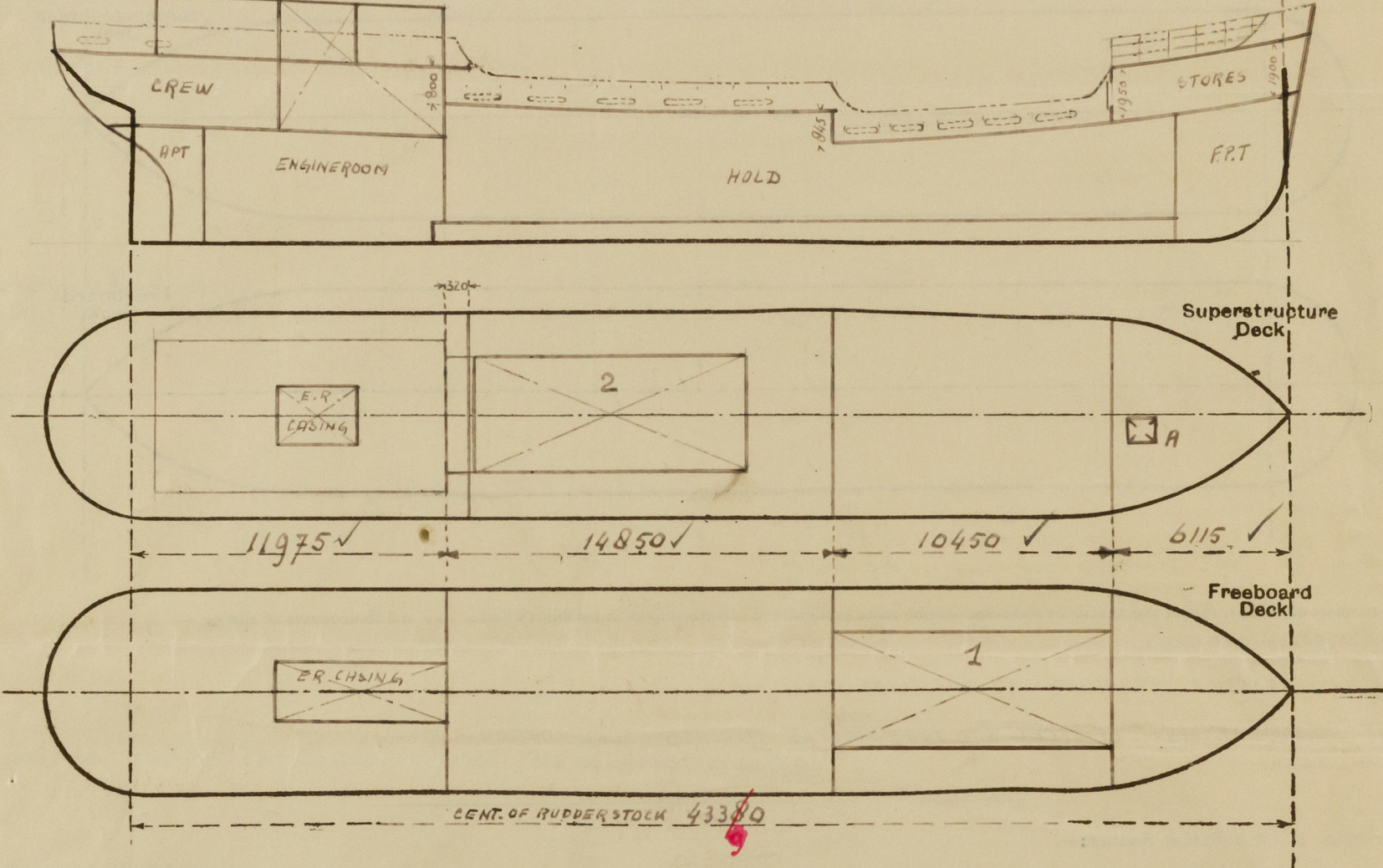
Index No. 40048
(For London Office only).

Lloyd's Register of Shipping.
SURVEYS FOR FREEBOARD.
(CONDITIONS OF ASSIGNMENT.)

GRON. RPT NO 319.

Ship's Name HADA Port of Survey GRONINGEN
Official Number _____ Surveyor's Signature [Signature]
Nationality and Port of Registry DUTCH. DORDRECHT. Date of Survey 2-49

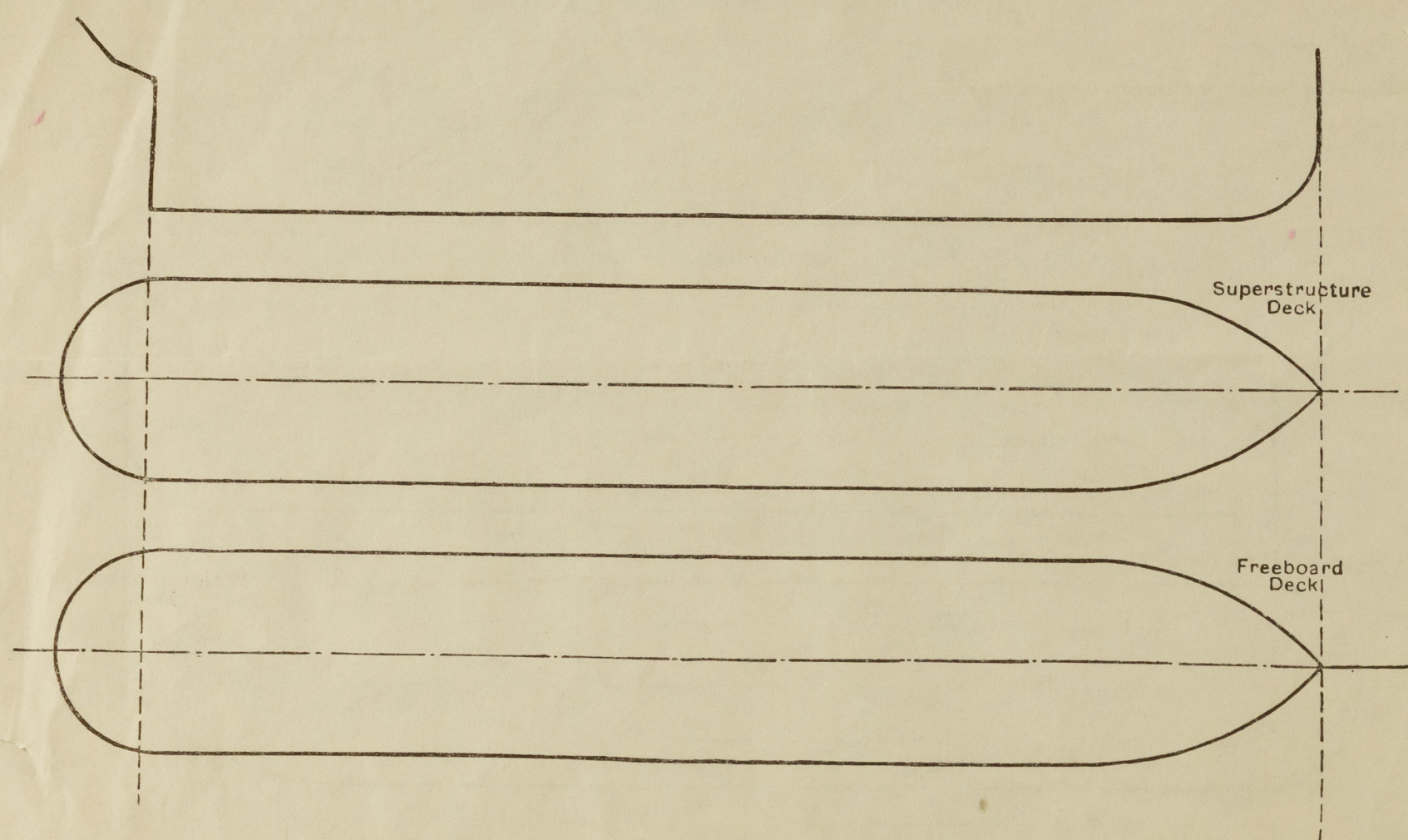
Disposition and dimensions of superstructures, trunks, deckhouses and machinery casings to be inserted in the diagrams and tabular statement: —



Particulars of Superstructures, Trunks, Casings, Deckhouses.								
	Coaming	Plating	Stiffeners	Spacing	End Attachments of Stiffeners	Size of Openings	Height of Sills	Height of Casings
Poop Bulkhead	-	6	1160x8 ✓	725	E.W. ✓	IN TACT ✓	-	2200 ✓
Raised Quarter Deck Bulkhead ...	-	7	1135x9 ✓	725 ✓	E.W.	IN TACT	-	845
Bridge, After Bulkhead	-							
Bridge, Forward Bulkhead	-							
Forecastle Bulkhead	7 1/2 ✓	6 ✓	165x7 ✓	600 ✓	E.W. ✓	1250x925 ✓	520 ✓	1950 ✓
Trunk, Aft	-							
Trunk, Forward	-							
Exposed Machinery Casings on Freeboard or Raised Quarter Decks ...	-							
Exposed Machinery Casings on Superstructure Decks	-							
Machinery Casings within Superstructures not fitted with Class I Closing Appliances	CASINGS PROTECTED BY SUPERSTRUCTURES							
Deckhouses on Flush Deck Ships ...								
Particulars of Closing Appliances (state if capable of being manipulated from both sides).								
Poop Bulkhead	NO OPENINGS							
Raised Quarter Deck Bulkhead ...	NO OPENINGS							
Bridge, After Bulkhead	-							
Bridge, Forward Bulkhead	-							
Forecastle Bulkhead	PORTABLE STEEL PLATES ON HOOK BOLTS, NOT PASSING THROUGH BULKHEADS.							
Exposed Machinery Casings on Freeboard or Raised Quarter Decks ...	-							
Exposed Machinery Casings on Superstructure Decks	-							
Machinery Casings within Superstructures not fitted with Class I Closing Appliances	NO OPENINGS							
Deckhouses on Flush Deck Ships ...	-							

PARTICULARS OF PROTECTION TO OPENINGS, ETC.

The following diagrams should be used to indicate the positions of cargo and coaling hatchways, gangway, cargo and coaling ports, ventilators, companionways, etc., which would affect the seaworthiness of the ship:—



Particulars of fiddle, funnel and ventilator coamings, engine room skylight and other openings in machinery casing tops and their means of closing:—

NO FIDDLE OPENINGS.

FUNNEL, VENTILATOR COAMINGS IN EFFICIENT CONDITION.

ENGINE ROOM SKYLIGHT OF STEEL WITH PERMANENTLY ATTACHED STEEL COVERS.

Particulars of Flush Bunker Scuttles:—

(P.S.) POOPDECK: ONE BRASS FLUSH BUNKER SCUTTLE, SCREW COVER, PERMANENT CHAIN ATTACHMENT.

Particulars of Companionways:—

IN STEEL DECKHOUSE ON POOPDECK: STRONG TEAK HINGED DOORS, OPERATED FROM BOTH SIDES, SILLS 500.

Particulars of Ventilators in exposed positions on freeboard and superstructure decks:—

FORECASTLEDECK: 2 VENTILATORS, DIA 240, HEIGHT 1050, SUPPORTED.

STEEL COVERS SUPPLIED.

POOPDECK: 9 MUSHROOM VENTILATORS, SCREW DOWN, OPERATED FROM BOTH SIDES.

Particulars of Air Pipes in exposed positions on freeboard, raised quarter, or superstructure decks:—

FORECASTLEDECK: 1 AIRPIPE, HEIGHT 650.

WELLDECK : 2 " " " 1550, SUPPORTED BY FORECASTLE BULKHEAD.

" : 2 " " " 910.

R.P. DECK : 2 " " " 910

" : 2 " " " 780

POOPDECK : 2 " " " 570

" : 2 " " " 450

WOOD PLUGS/CANVAS COVERS SUPPLIED.

Particulars of Gangway Cargo and Coaling Ports:—

NONE FITTED

Particulars of Scuppers and Sanitary Discharge Pipes:—

W.C.S. DISCHARGE THROUGH BRONZE SCREW DOWN N.R. VALVES AT SHIP'S SIDE IN ENGINE ROOM IN ALWAYS ACCESSIBLE POSITION. INDICATOR OPEN/SHUT FITTED.

WASH BOWL DISCHARGES ABOVE PLATFORM DECK FITTED WITH BRASS N.R. VALVE AND COCK.

Particulars of Side Scuttles:—

IN POOPSPACE ONLY. ALL OF SUBSTANTIAL CONSTRUCTION AND FITTED WITH HINGED STEEL DEADLIGHTS.

Vertical distance of Sill of lowest Side Scuttle above top of keel ALL ABOVE MAINDECK

Particulars of Guard Rails:—

FORECASTLE: OPEN RAIL, HEIGHT 1000, 3 RDS, STANCHIONS 1200 APART.

WELLDECK: STEEL BULWARK, HEIGHT 1025, EFFICIENTLY SUPPORTED.

R.P. DECK: " " " 1025, " " "

POOPDECK: " " " 1025, " " "

2 facing ports 1000 x 240 mm, no bars, height above deck edge 270 mm.

Particulars of Gangways, Lifelines, etc.:—

LIFELINES CAN BE RIGGED OVER HATCHES.

Particulars of Freeing Arrangements.

	Length of Bulwark	Height of Bulwark	Size of Freeing Ports	Number each side	Area each side	Rule area each side
After Well (R.P.D.) ...	14,850	1,025	1000 x 225	5	1.125 m ²	1.057 m ²
Forward Well ...	10,450	1,025	1000 x 225	5	1.125 m ²	0.723 m ²

State position of each freeing port SEE SKETCH (After Well:— 170

(F and A position and height above deck edge) (Forward Well:— 210

State whether the freeing ports are fitted with shutters, bars, or rails, and give particulars of such:— NONE FITTED.

Additional area where sheer is less than standard.

PARTICULARS OF PROTECTION TO OPENINGS, ETC.

HATCHWAYS ON FREEBOARD AND SUPERSTRUCTURE DECKS.									
Description of Hatchway		1	2	"A"					
Dimensions of Hatchway		9650 x 5350 ✓	9350 x 5350 ✓	9800 x 9800					
COAMINGS	Height above Deck	1070 ✓	970 ✓	320					
	Thickness	10 ✓	10 ✓	7 ✓					
	Sides								
	Ends								
Stiffeners		225 x 90 x 10 ✓	225 x 90 x 10 ✓	—					
Brackets, Stays		5 ✓	5 ✓	—					
HATCH BEAMS	Number	5 ✓	5 ✓						
	Spacing	EQUAL ✓	EQUAL ✓						
	Scantling and Sketch	100 x 75 x 11 ✓	100 x 75 x 11 ✓						
		350 x 8 1/2 ✓	305 x 8 ✓						
	Bearing Surface	100 x 75 x 11 ✓	100 x 75 x 11 ✓						
FORE AND AFTERS	Number								
	Spacing								
	Unsupported Lengths								
	Scantling and Sketch								
Bearing Surface									
HATCH COVERS	Material	PINE ✓	PINE ✓	STEEL					
	Thickness	65 ✓	65 ✓	8					
	How fitted	FRA ✓	FRA ✓	HINGED, WATERTIGHT					
	Bearing Surface	100 ✓	100 ✓	4 TUGGLES. ✓					
Spacing of Cleats		465/150 ✓	465/150 ✓	—					
Number of Tarpaulins		2 ✓	2 ✓	—					
<p>*Are wood fore and afters steel shod at all bearing surfaces? YES ✓</p> <p>Are battens and wedges efficient and in good condition? YES ✓</p> <p>Are tarpaulins in good condition and in accordance with rule requirements? YES ✓</p> <p>Are lashings provided in accordance with rule requirements? YES ✓</p>									

Particulars of any special features:—

Endorsement at first survey and at surveys for renewal of Certificate:—

The fittings and appliances are in accordance with the particulars shown on this form (or as now modified) and are in good condition.

gus



© 2020

Lloyd's Register Foundation