

31-8-36

S. S. No 578

FORGED STEEL BALANCED RUDDER

To
LLOYDS REQUIREMENTS.

FOR DESIGNED SPEED OF 12 KNOTS.

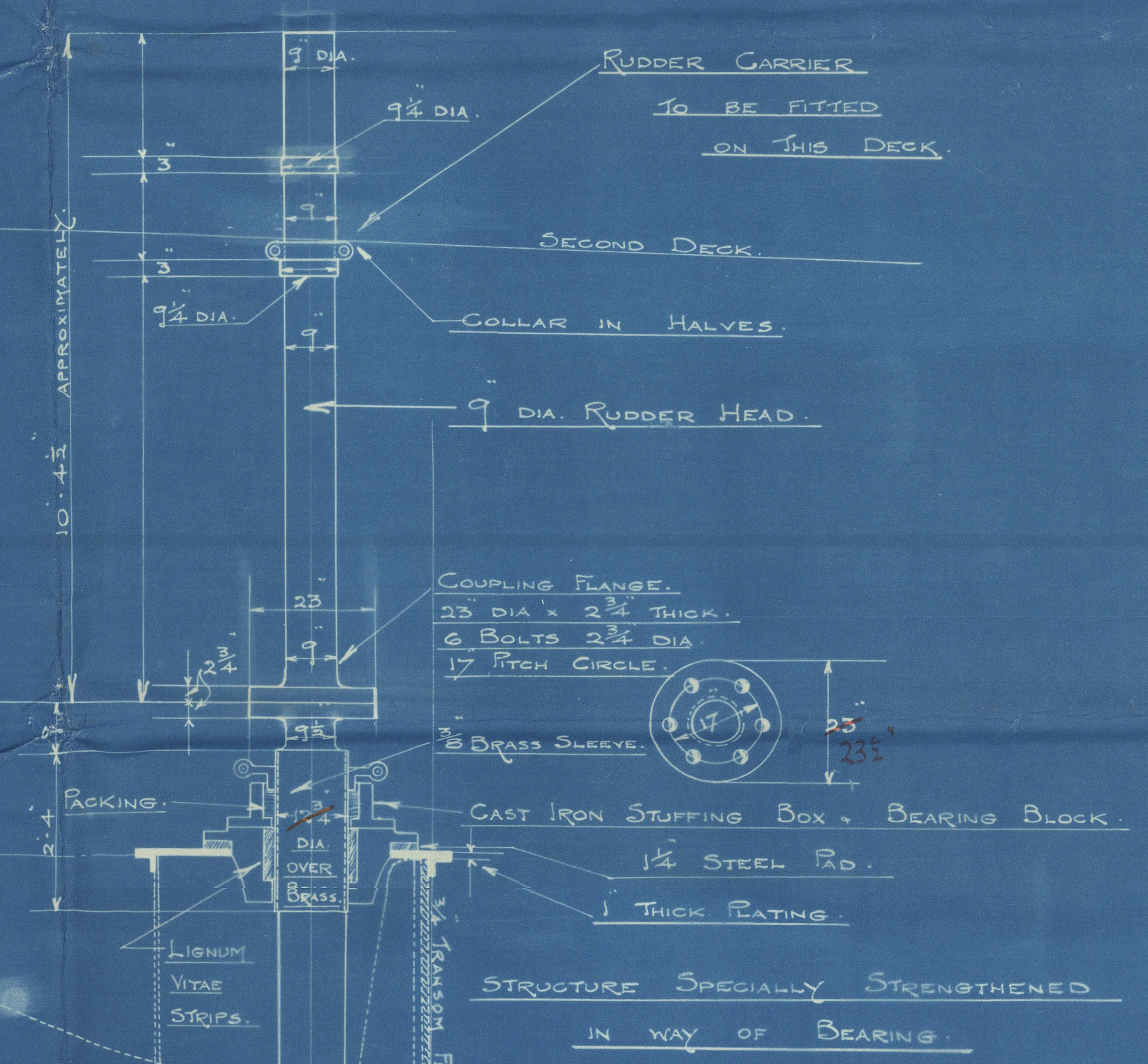
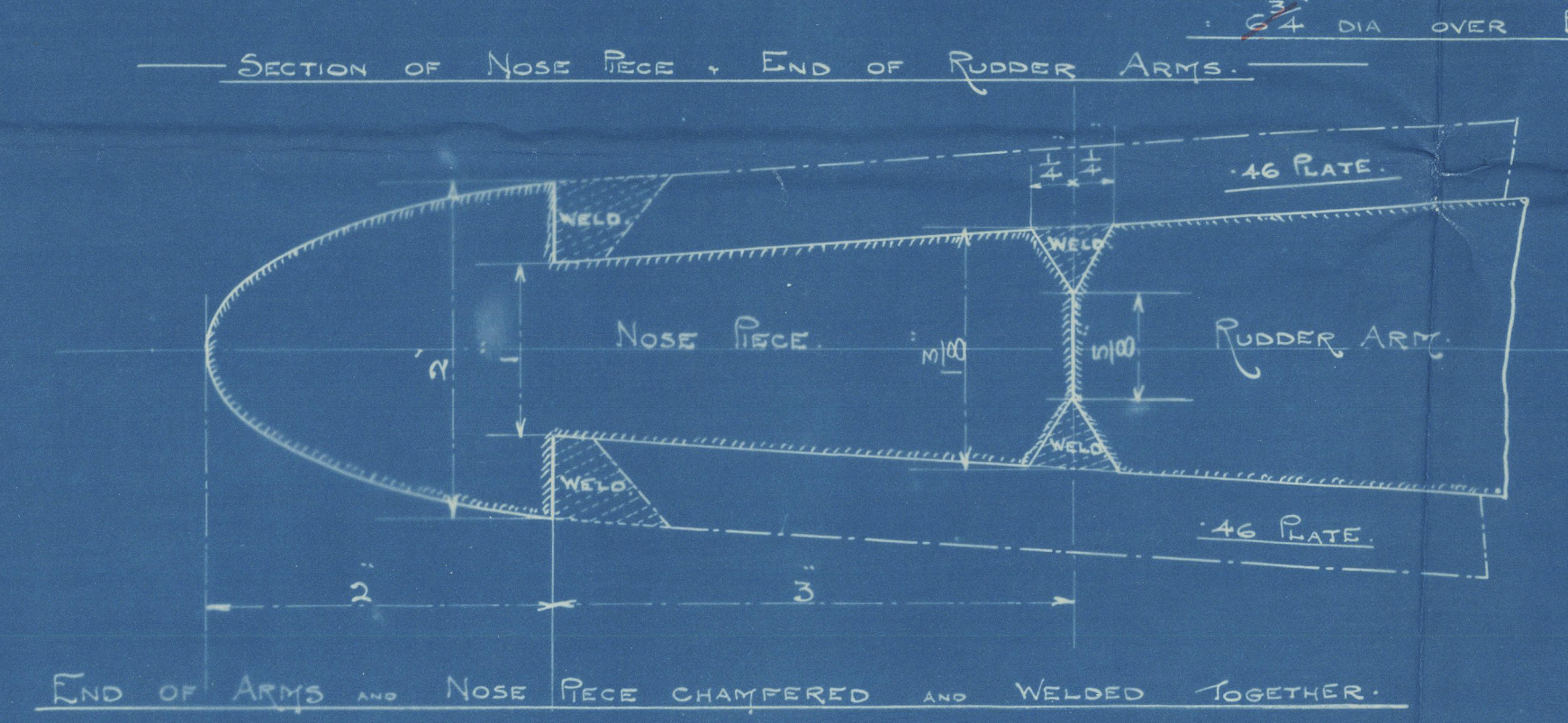
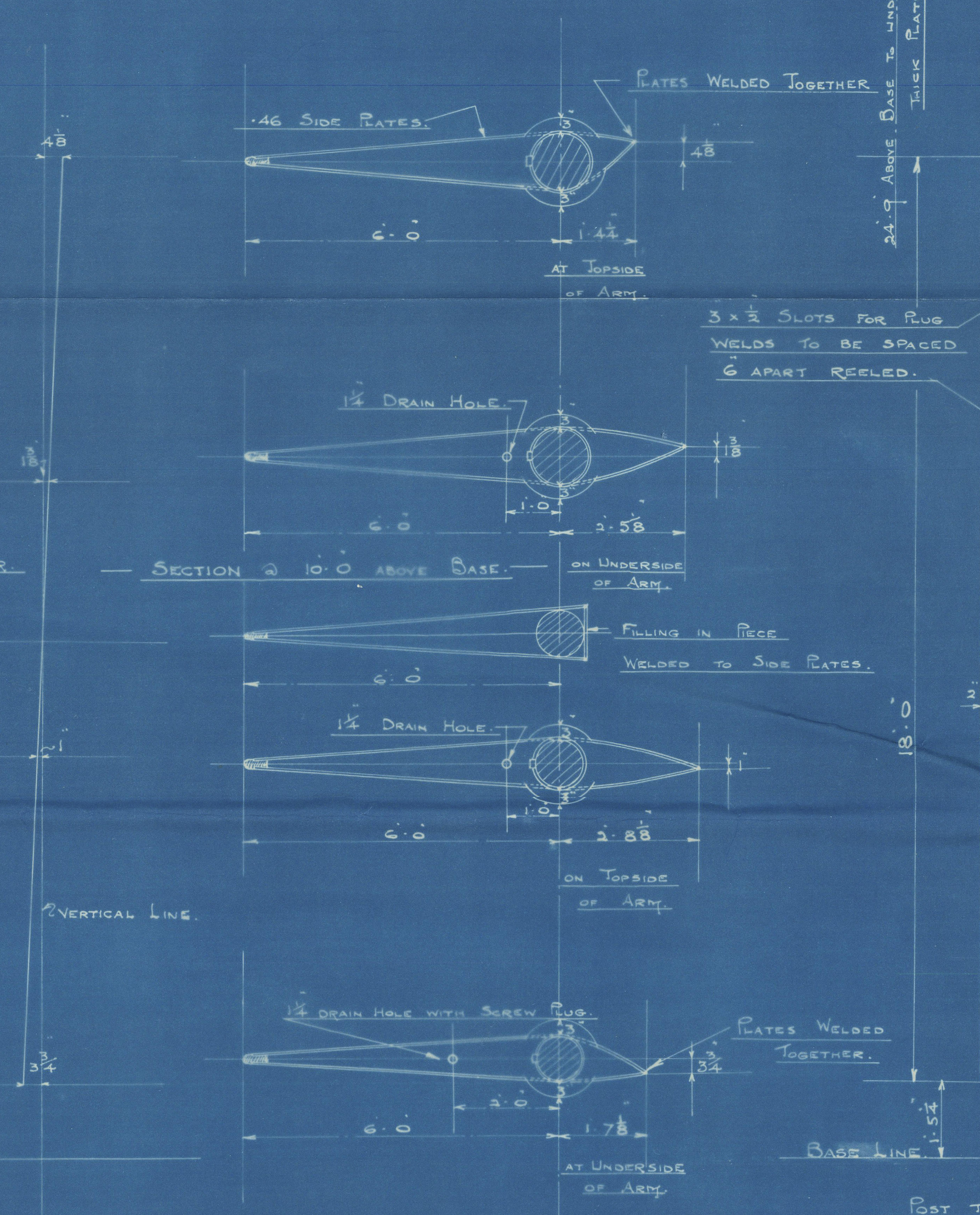
SCALE 1/2" = 1 FOOT.

AREA = (18.0 x 6.0) = 108 sq.

C.G. AHEAD 1/4 OF RUDDER POST = 3.00

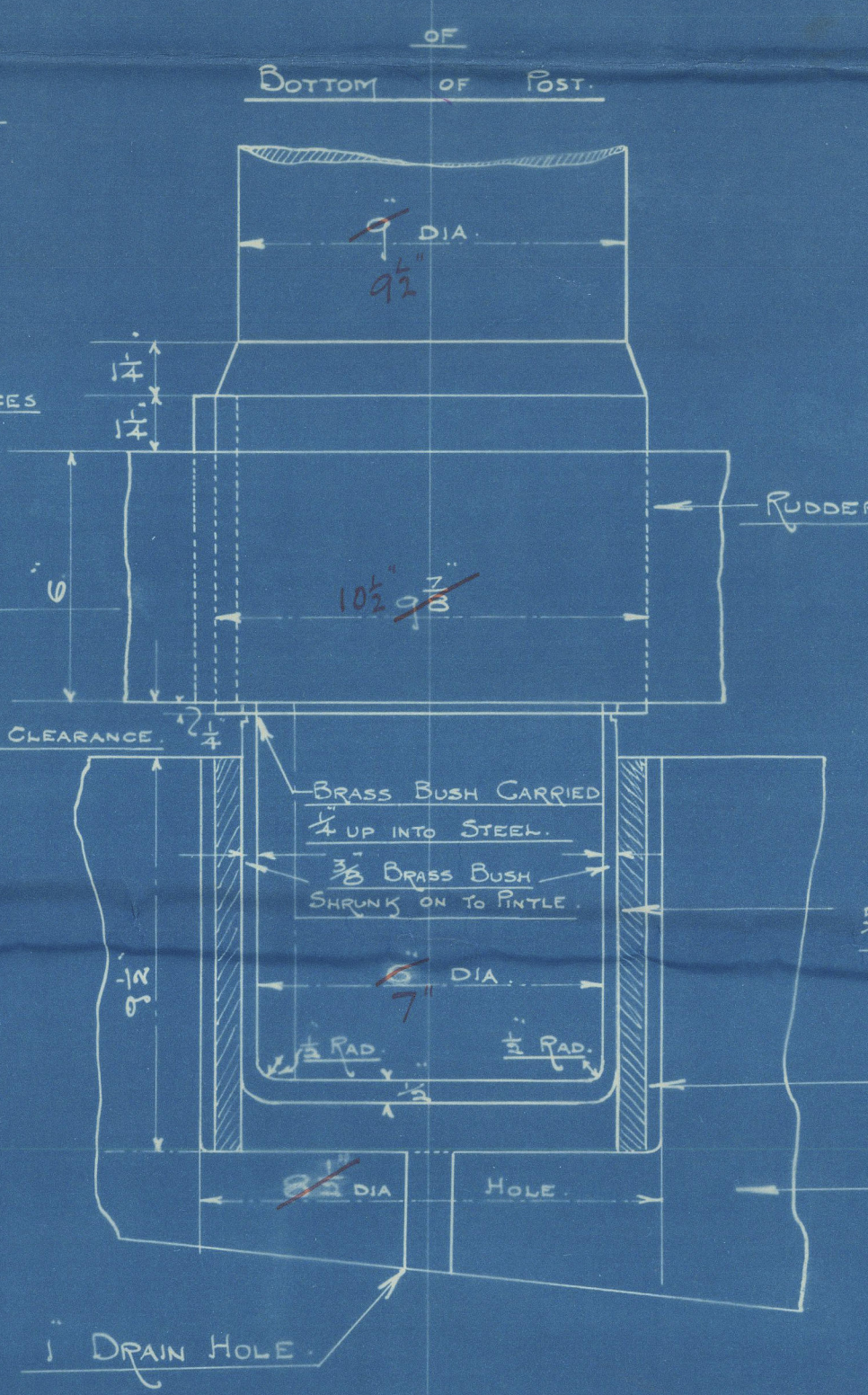
NUMERAL = 324

PLAN OF ARMS.

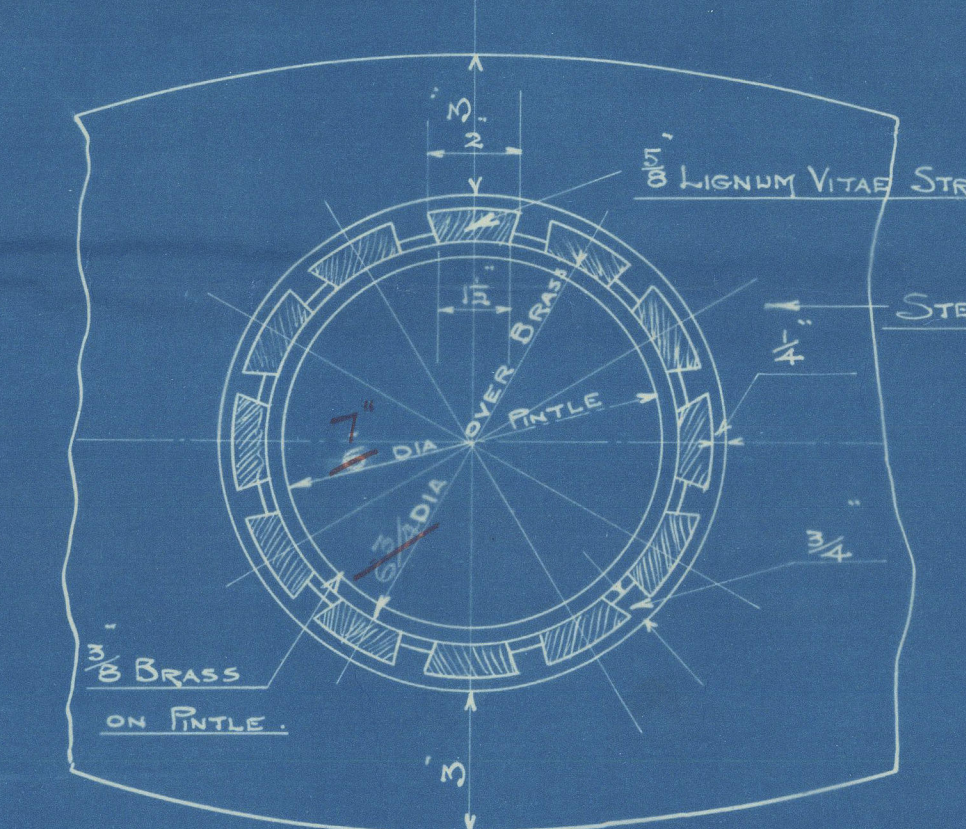


Arms to be keyed to Mainbrace by key whose thickness is 10/16 dia of Mainbrace & breadth twice its thickness.

SECTIONAL ELEVATION OF BOTTOM OF POST



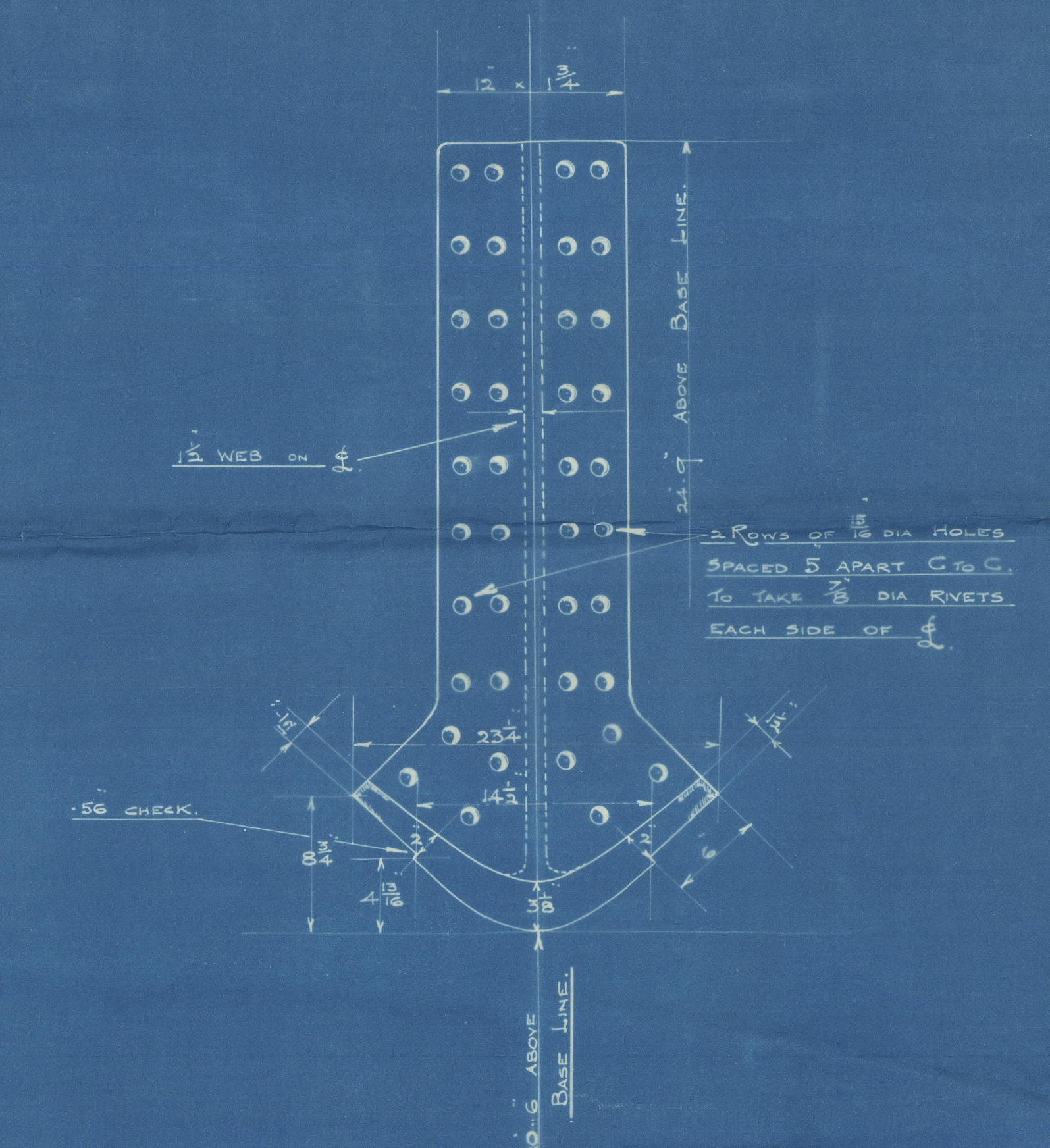
PLAN VIEW



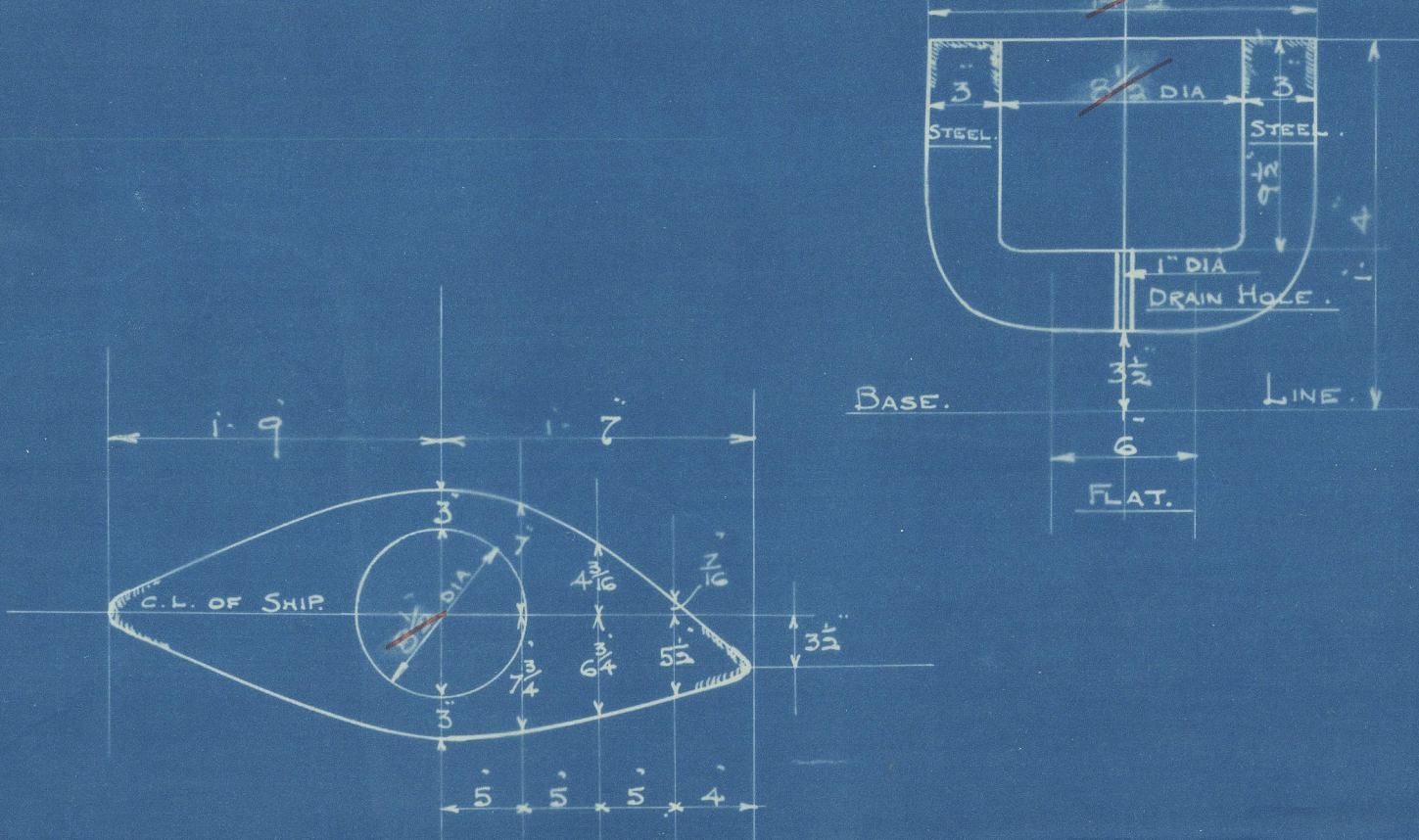
PRINCIPAL DIMENSIONS.
LENGTH B.F. 409.0
BREADTH MOULDED 58.6
DEPTH MOULDED 36.9

NUMERALS
L x D : 409 x 36.75 = 15030
L x (B + D) : 409 x (58.6 + 36.75) = 38955
COMPLETE SUPERSTRUCTURE VESSEL

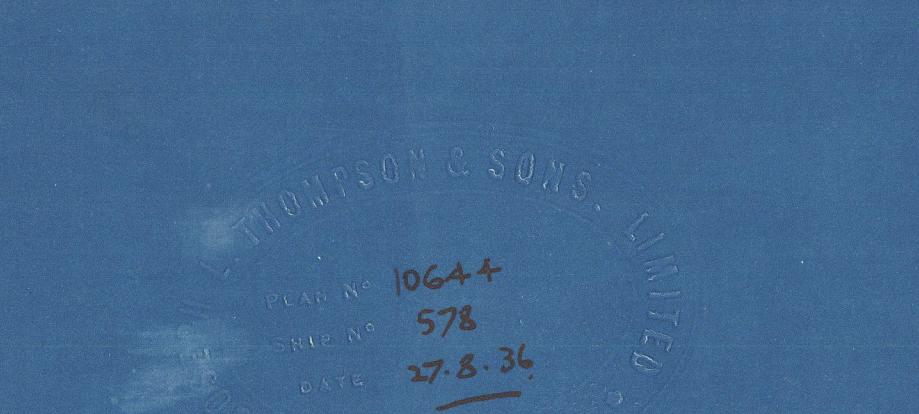
TRANSOM FRAME



THWARTSHIP SECTION OF GUDGEON



PLAN OF TOP OF BOTTOM GUDGEON



S. S. No 578

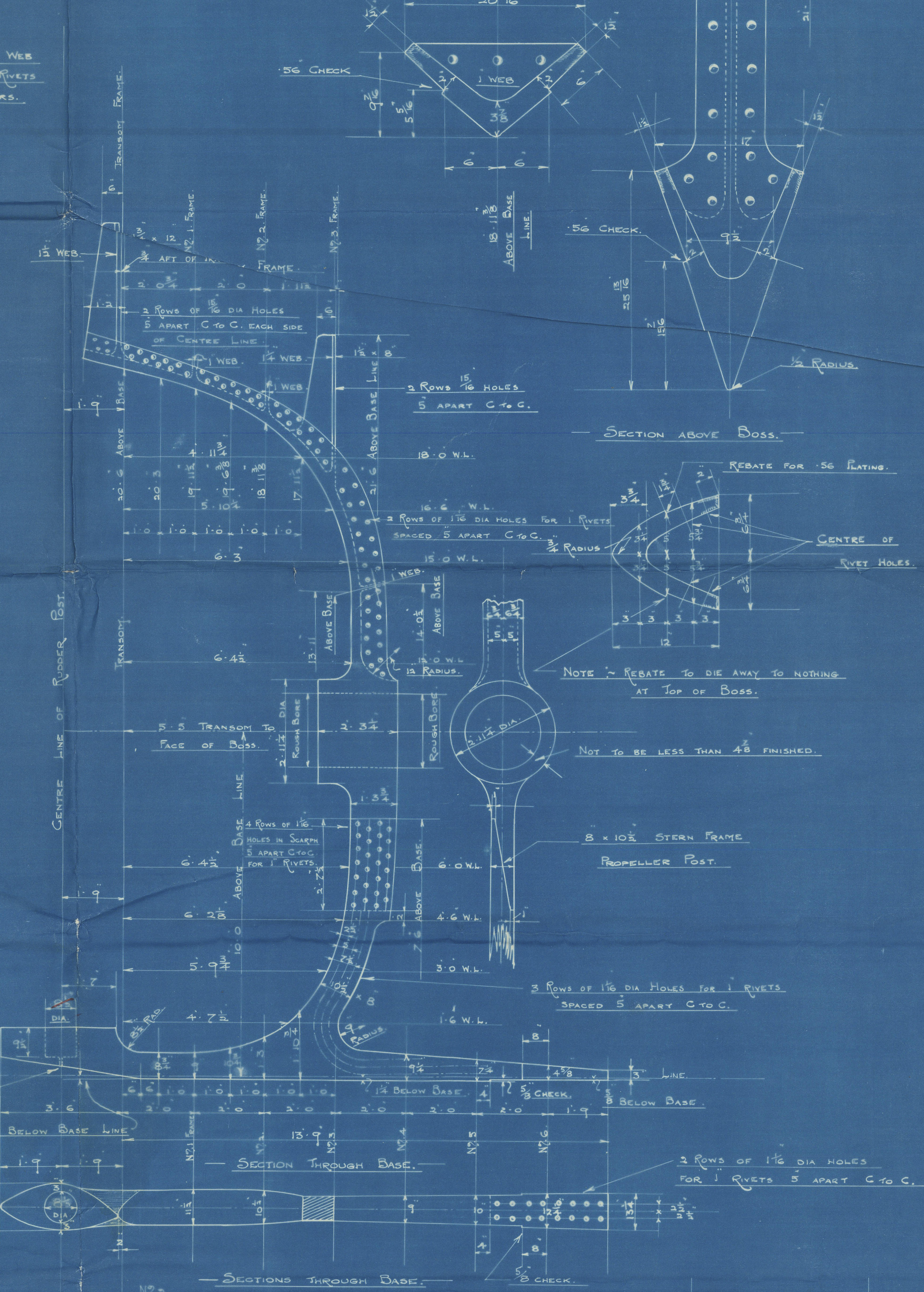
STERN FRAME

To LLOYDS CLASSIFICATION.

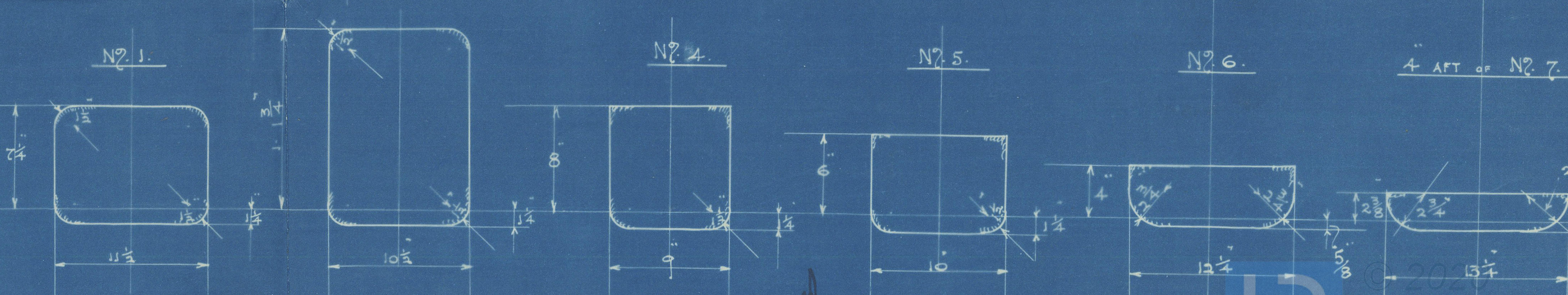
UPPER PORTION CAST STEEL.

LOWER FORGED.

SCALE 1/2" AND 1/4" = 1 FOOT.



SECTIONS THROUGH BASE



SUNDERLAND.

Messrs. J. L. Thompson & Sons,

No. 578. + 580

Stern Frame & Rudder,



S.S. "LOCH DEE"

SUNDERLAND RPT. No. 32094.

S.S. "LOCH DON"

Sunderland Rpt. No. 32132.



© 2020

Lloyd's Register
Foundation

00274-00276-0218