

Lloyd's Register of Shipping.
SURVEYS FOR FREEBOARD.
(CONDITIONS OF ASSIGNMENT.)

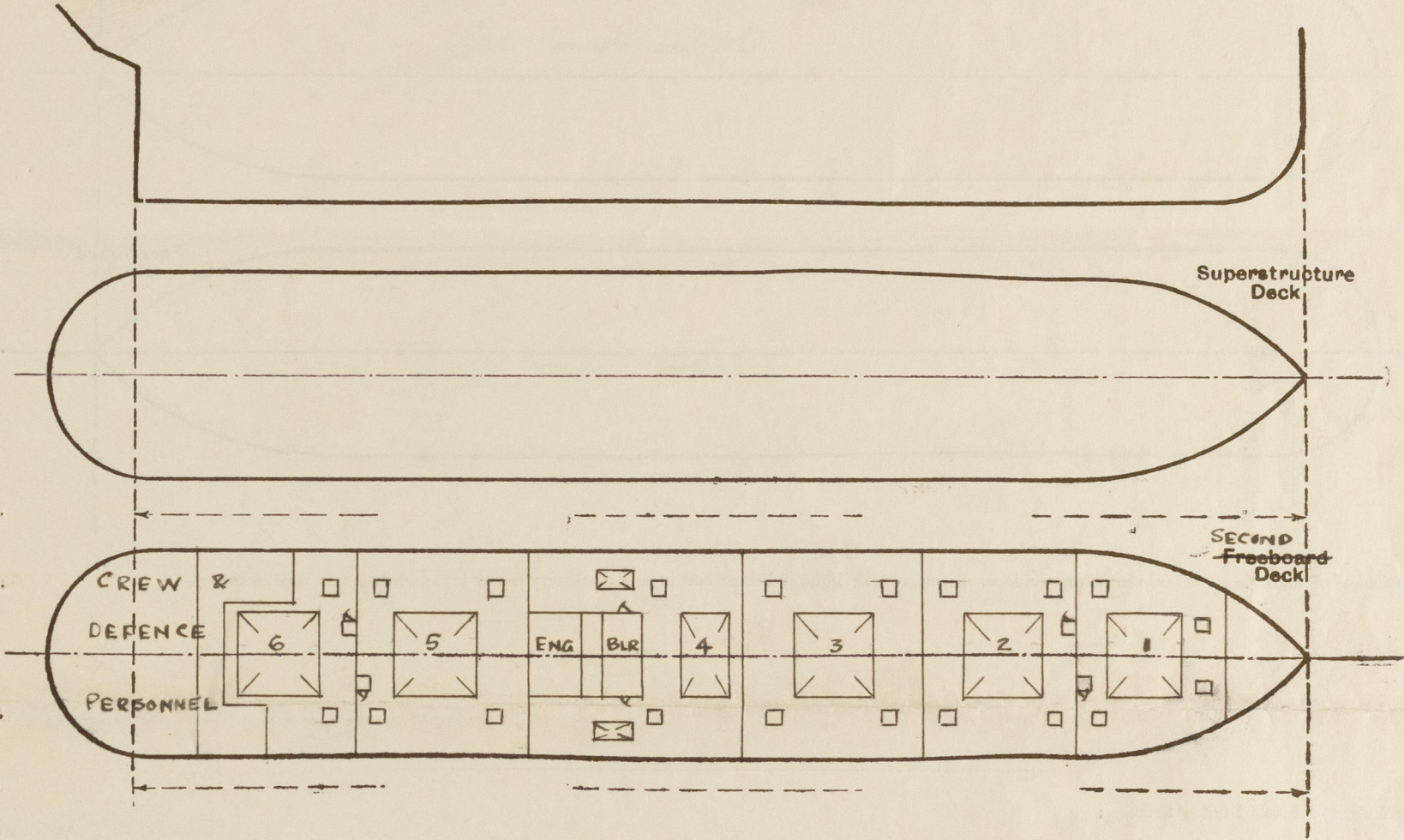
Index No. _____
(For London Office only).

No. 18391

12 MAR 1943

Ship's Name "EMPIRE PROWESS" Port of Survey WEST HARTLEPOOL
Official Number not recd. Surveyor's Signature E. Lee
Nationality and Port of Registry BRITISH. W. HARTLEPOOL Date of Survey March 1943

Disposition and dimensions of superstructures, trunks, deckhouses and machinery casings to be inserted in the diagrams and tabular statement :—

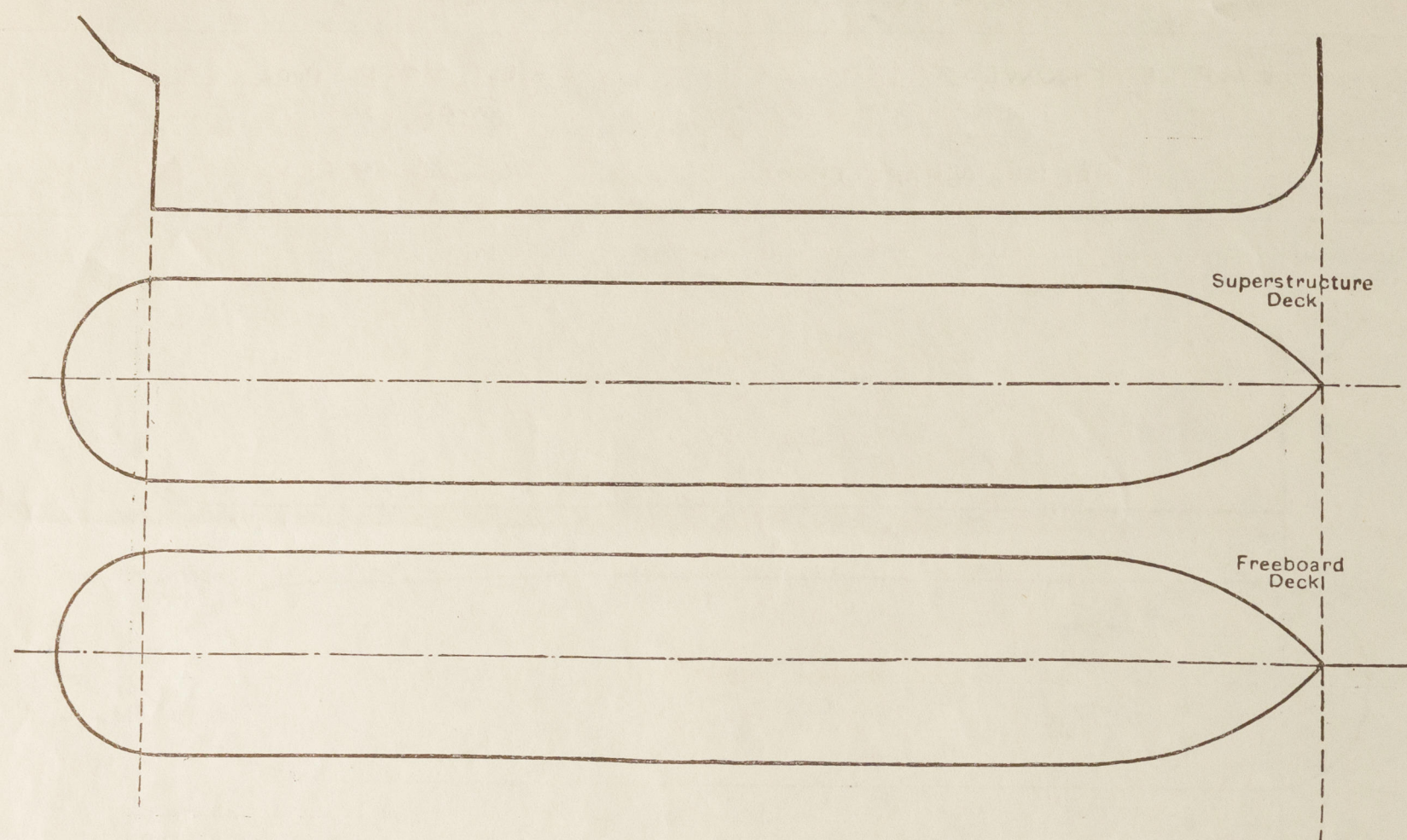


Particulars of Superstructures, Trunks, Casings, Deckhouses.								
	Coaming	Plating	Stiffeners	Spacing	End Attachments of Stiffeners	Size of Openings	Height of Sills	Height of Casings
Poop Bulkhead								
Raised Quarter Deck Bulkhead ...								
Bridge, After Bulkhead								
Bridge, Forward Bulkhead								
Forecastle Bulkhead								
Trunk, Aft								
Trunk, Forward								
Exposed Machinery Casings on Freeboard or Raised Quarter Decks ...								
Exposed Machinery Casings on Superstructure Decks								
Machinery Casings within Superstructures not fitted with Class I Closing Appliances ... 2 ND DECK..	30	26	3 x 3 x 30 3 1/2 x 3 x 40	31	CONTINUOUS	2 AT 4'-0" x 2'-0"	24"	9'-0"
Deckhouses on Flush Deck Ships ...								

Particulars of Closing Appliances (state if capable of being manipulated from both sides).	
Poop Bulkhead	
Raised Quarter Deck Bulkhead ...	
Bridge, After Bulkhead	
Bridge, Forward Bulkhead	
Forecastle Bulkhead	
Exposed Machinery Casings on Freeboard or Raised Quarter Decks ...	
Exposed Machinery Casings on Superstructure Decks	
Machinery Casings within Superstructures not fitted with Class I Closing Appliances ... 2 ND DECK..	Hinged steel doors operated from both sides. ✓
Deckhouses on Flush Deck Ships ...	

PARTICULARS OF PROTECTION TO OPENINGS, ETC.

The following diagrams should be used to indicate the positions of cargo and coaling hatchways, gangway, cargo and coaling ports, ventilators, companionways, etc., which would affect the seaworthiness of the ship:—



Particulars of fiddle, funnel and ventilator coamings, engine room skylight and other openings in machinery casing tops and their means of closing:—

Particulars of Flush Bunker Scuttles:—

Particulars of Companionways:—

*Entrance on 2nd deck to holds
2 up to mast houses on upper
deck. Hinged steel doors 4'-0"
x 1'-8" operated from both sides.
Sills 24".*

Particulars of Ventilators in exposed positions on freeboard and superstructure decks:—

Particulars of Air Pipes in exposed positions on freeboard, raised quarter, or superstructure decks:—

"EMPIRE PROWESS"

Particulars of Gangway Cargo and Coaling Ports:—

Particulars of Scuppers and Sanitary Discharge Pipes:—

See main report.

Particulars of Side Scuttles:—

See main report.

Vertical distance of Sill of lowest Side Scuttle above top of keel

Particulars of Guard Rails:—

Particulars of Gangways, Lifelines, etc.:—

Particulars of Freeing Arrangements.

	Length of Bulwark	Height of Bulwark	Size of Freeing Ports	Number each side	Area each side	Rule area each side
After Well						
Forward Well						

State position of each freeing port { After Well:—
(F. and A. position and height above deck edge) { Forward Well:—

State whether the freeing ports are fitted with shutters, bars, or rails, and give particulars of such:—

Additional area where sheer is less than standard.



© 2020

Lloyd's Register
Foundation

0098 2/2

PARTICULARS OF PROTECTION TO OPENINGS, ETC.

SECOND HATCHWAYS ON FREEBOARD AND SUPERSTRUCTURE DECK S										
Description of Hatchway	Nº 1	Nº 2	Nº 3	Nº 4	Nº 5	Nº 6	COAL HATCHES	ESCAPE HATCHES
Dimensions of Hatchway	31'-6" x 20'	31' x 20'	31' x 20'	12'-11" x 20'	31' x 20'	31' x 20'	7'-9" x 4'	2'-4" x 2'-6"
COAMINGS	{	Height above Deck	...	9" x	3 1/2" x	44 B.A.			9" x 3 1/2" x	40 B.A.
		Thickness	...							
		Sides	...							
		Ends	...							
HATCH BEAMS	{	Number	...	5	5	5	1	5	5	
		Spacing	...	5'-3"	5'-2"	5'-2"	6'-5 1/2"	5'-2"	5'-2"	
		Scantling and Sketch	...							
		Bearing Surface	...	19 x 38	19 x 38	19 x 38	22 x 38	19 x 38	19 x 38	✓
FORE AND AFTERS	{	Number	...							
		Spacing	...							
		Unsupported Lengths	...							
		Scantling and Sketch	...				✓			
HATCH COVERS	{	Material	...	WOOD	WOOD	WOOD	WOOD	WOOD	WOOD	2 1/2 HINGED
		Thickness	...	2 1/2	2 1/2	3	2 1/2	2 1/2	2 1/2	WOOD COVERS,
		How fitted	...	F & A	F & A	F & A	F & A	F & A	ATHW	NO BATTENS
		Bearing Surface	...	3	3	3	3	3	3	OR CLEATS
Spacing of Cleats	24	24	24	24	24	20	✓	
Number of Tarpaulins			NO TARP AULINS	FITTED				
*Are wood fore and afters steel shod at all bearing surfaces? ✓										
Are battens and wedges efficient and in good condition? ✓										
Are tarpaulins in good condition and in accordance with rule requirements? ✓										
Are lashings provided in accordance with rule requirements? ✓										

Particulars of any special features :—

Endorsement at first survey and at surveys for renewal of Certificate :—

The fittings and appliances are in accordance with the particulars shown on this form (or as now modified) and are in good condition.

