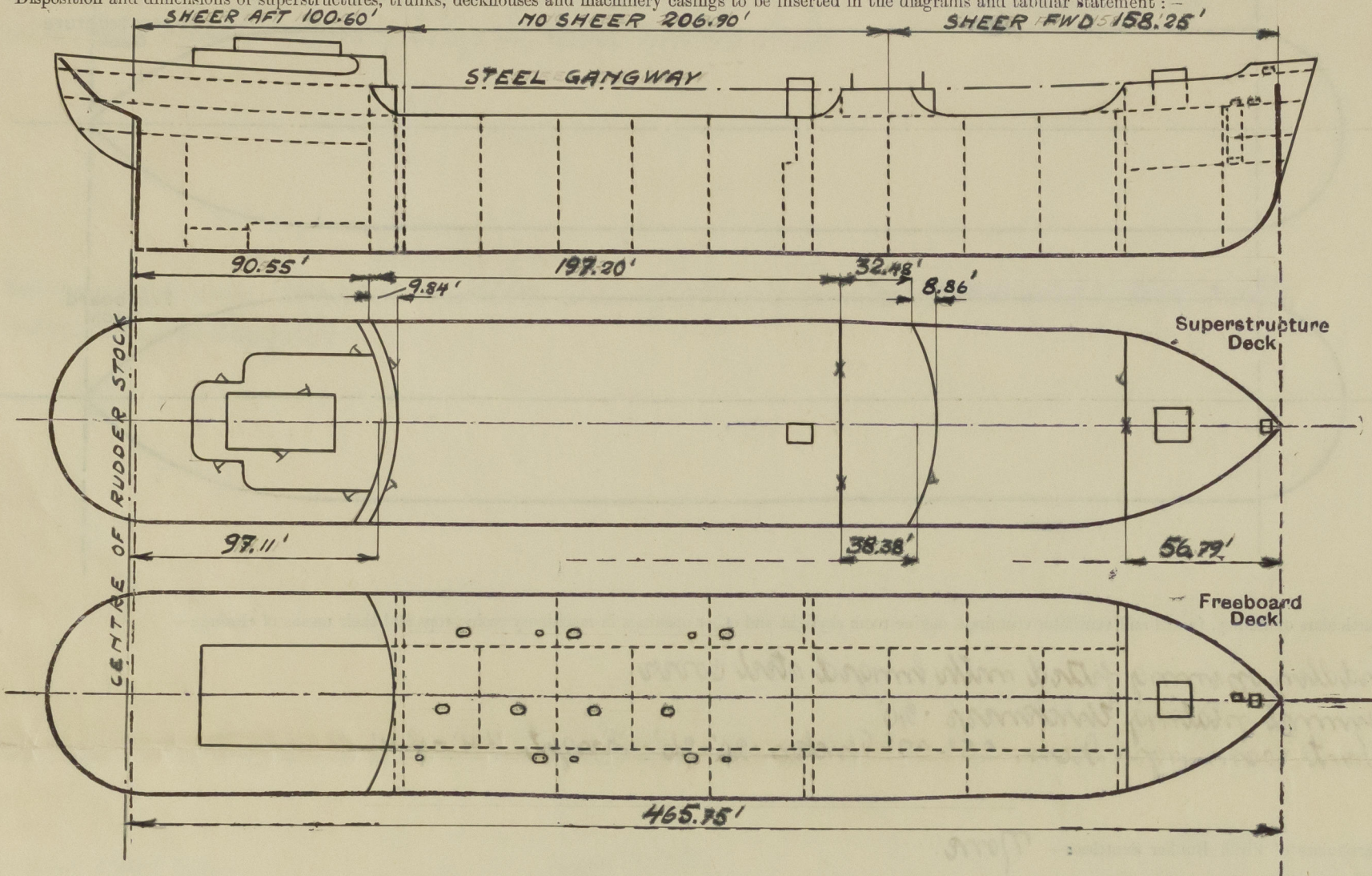


Lloyd's Register of Shipping.  
SURVEYS FOR FREEBOARD.  
(CONDITIONS OF ASSIGNMENT.)

Index No. \_\_\_\_\_  
(For London Office only).

Ship's Name *M/T "BRALI" (ex Carlshamn)* Port of Survey *Malmö.*  
Official Number \_\_\_\_\_ Surveyor's Signature *Asunden A. Börning*  
Nationality and Port of Registry *Norwegian, Oslo.* Date of Survey *Whilst building.*

Disposition and dimensions of superstructures, trunks, deckhouses and machinery casings to be inserted in the diagrams and tabular statement: -



Particulars of Superstructures, Trunks, Casings, Deckhouses.

	Coaming	Plating	Stiffeners	Spacing	End Attachments of Stiffeners	Size of Openings	Height of Sills	Height of Casings
Poop Bulkhead ... <i>Sides Centre</i>	to W. to dk.	44"	8 7/8" x 3 1/2" x 50 I	27" - 31"	Pl. to W. to dk. T. to W. to dk. B.	60" x 25"	25"	7.75'
Raised Quarter Deck Bulkhead ...	" "	48"	10" x 3 1/2" x 52 I	29" - 30"	Pl. to W. to dk. T. to W. to dk. B.	✓	✓	7.75'
Bridge, After Bulkhead ...	" "	32"	3" x 2" x 32 I	33.5"	Pl. to W. to dk. T. to W. to dk. B.	48" x 37.5"	23"	7.75'
Bridge, Forward Bulkhead ...	" "	46"	10" x 3 1/2" x 42 I	33.6"	Pl. to W. to dk. T. to W. to dk. B.	60" x 38"	18"	7.75'
Forecastle Bulkhead ...	" "	30"	3 1/2" x 3" x 32 I	23" - 33"	Pl. to W. to dk. T. to W. to dk. B.	52" x 29"	25"	7.5'
<i>Main pumping room casing.</i> Trunk Aft ...	" "	32"	3 1/2" x 2 1/2" x 32 I	20" - 24"	Pl. to W. to dk. T. to W. to dk. B.	61" x 49"	15"	7.5'
Trunk, Forward ...	" "	32"	3 1/2" x 2 1/2" x 32 I	20" - 24"	Pl. to W. to dk. T. to W. to dk. B.	54" x 33 1/2"	48"	9.75'
Exposed Machinery Casings on Freeboard or Raised Quarter Decks ...	" "	28"	3" x 2" x 30 I	30"	Pl. to W. to dk. T. to W. to dk. B.	None	✓	3.25'
Exposed Machinery Casings on Superstructure Decks ...	" "	28"	3" x 2" x 30 I	30"	Pl. to W. to dk. T. to W. to dk. B.	None	✓	3.25'
Machinery Casings within Superstructures not fitted with Class I Closing Appliances ...	" "	28"	3" x 2" x 30 I	30"	Pl. to W. to dk. T. to W. to dk. B.	None	✓	3.25'
Deckhouses on <i>Poop</i> Deck <i>Bridge</i> <i>Trunk</i> <i>Sides</i> ...	5' x 2 1/2" x 32 I	28"	4" x 40" T 3" x 32" T	28" 22"	Pl. to beams.	61" x 25 1/4"	18"	

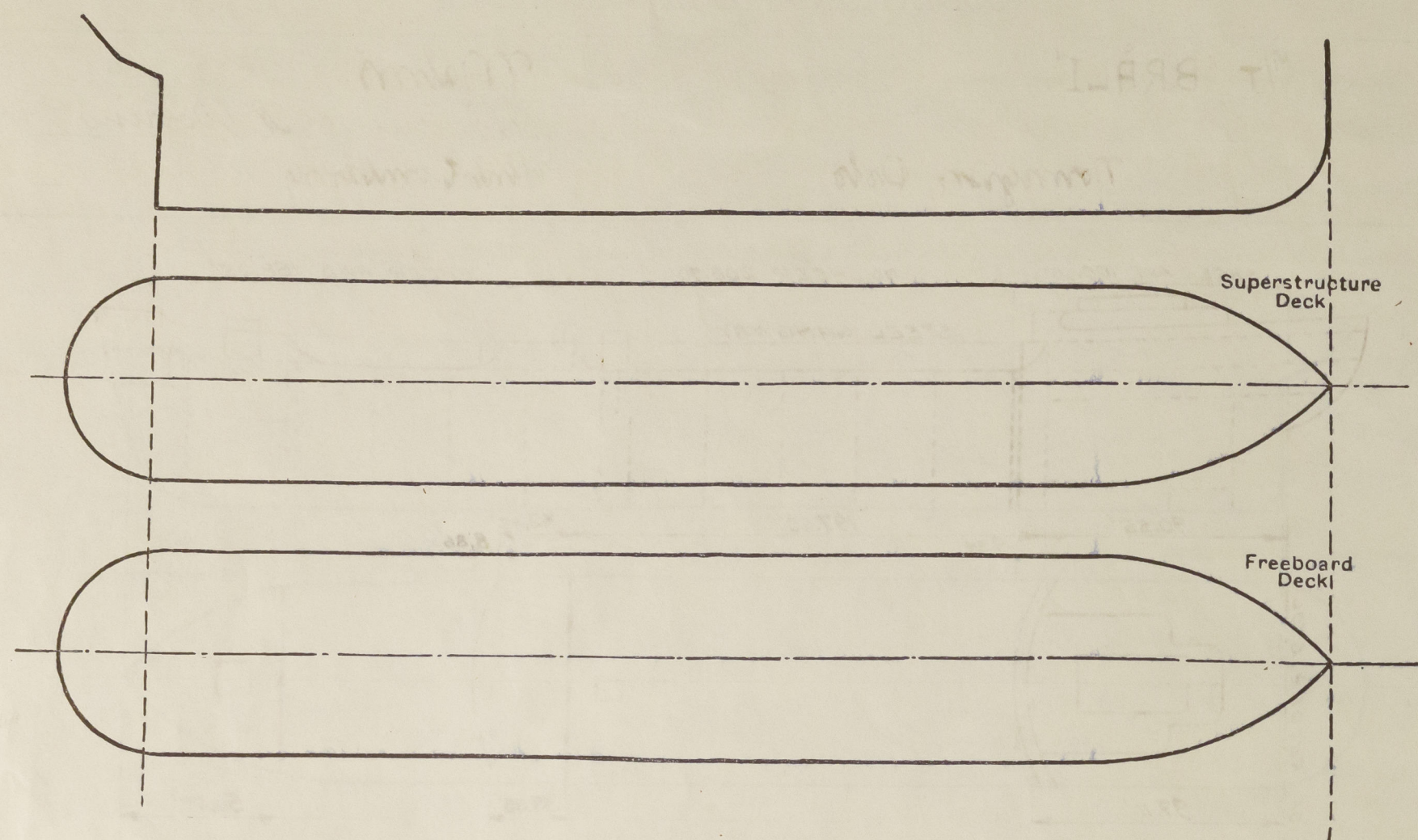
Particulars of Closing Appliances (state if capable of being manipulated from both sides).

Poop Bulkhead ...	Hinged W.T. steel door, manipulated from both sides.
Raised Quarter Deck Bulkhead ...	
Bridge, After Bulkhead ...	2 1/2" shifting boards in welded channels, full height.
Bridge, Forward Bulkhead ...	Hinged W.T. steel door, manipulated from both sides.
Forecastle Bulkhead ...	3 1/4" shifting boards in welded channels, full height. (Side space.)
Exposed Machinery Casings on Freeboard or Raised Quarter Decks ...	Hinged W.T. steel door, manipulated from both sides. (Main pumping room fwd.)
Exposed Machinery Casings on Superstructure Decks ...	
Machinery Casings within Superstructures not fitted with Class I Closing Appliances ...	
Deckhouses on <i>Poop &amp; bridge</i> <i>Flash Deck Ship</i> ...	2" thick solid oak doors, manipulated from both sides.



# PARTICULARS OF PROTECTION TO OPENINGS, ETC.

The following diagrams should be used to indicate the positions of cargo and coaling hatchways, gangway, cargo and coaling ports, ventilators, companionways, etc., which would affect the seaworthiness of the ship:—



Particulars of fiddle, funnel and ventilator coamings, engine room skylight and other openings in machinery casing tops and their means of closing:—

Fiddle opening fitted with hinged steel cover.  
 Immers. plating thickness .20".  
 Vent. coamings:— Diam. 25"-37". Thicken. 20"-26". Height 4'4" = 8'4".

Particulars of Flush Bunker Scuttles:— None.

Particulars of Companionways:— Prop. space entrance at sides of prop deck house.  
 Size of openings 61" x 25 1/4". Height of sills above steel deck 18".  
 2" thick, solid teak doors, manipulated from both sides.

Particulars of Ventilators in exposed positions on freeboard and superstructure decks:—

Coat deck aft:— Diam. 9"-12". Thicken. .20". Height 30".  
 Prop. deck:— Diam. 6"-9"-12". Thicken. .30"-.32"-.34"-.40". Height 30"-66" (flanged)  
 Fore. deck:— Service ports of strong construction.  
 Side deck:— Diam. 12"-18". Thicken. .34"-.40". Height 36".  
 All vent. coamings are electrically welded to decks and provided with means for closing.

Particulars of Air Pipes in exposed positions on freeboard, raised quarter, or superstructure decks:—

Prop. deck:— Height 30"-36" in height.  
 Fore. deck:— " 7'-9" " (stamped to prop. bid.)  
 Side deck:— " 20"-36" " "  
 All pipes provided with means for closing.

Particulars of Gangway Cargo and Coaling Ports:— None.

M/T. Bräli.

Particulars of Scuppers and Sanitary Discharge Pipes:— No scuppers below freeboard deck.

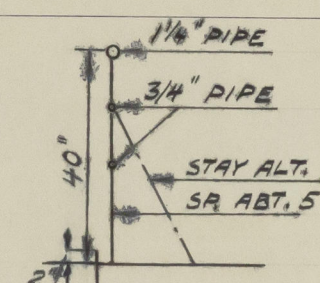
Sanitary discharge pipes from prop. deck house and from prop. space are led overboard about 12" above 2nd deck. (Acceptable in motor space) and those from bridge deck house led overboard above freeboard deck. All discharge pipes are fitted with storm valves and drain pipes from the prop. space, also provided with non-detachable screen plugs at their inner ends.

Particulars of Side Scuttles:— All side scuttles are of strong construction and fitted with hinged deadlights.

Vertical distance of Sill of lowest Side Scuttle above top of keel About 29'.

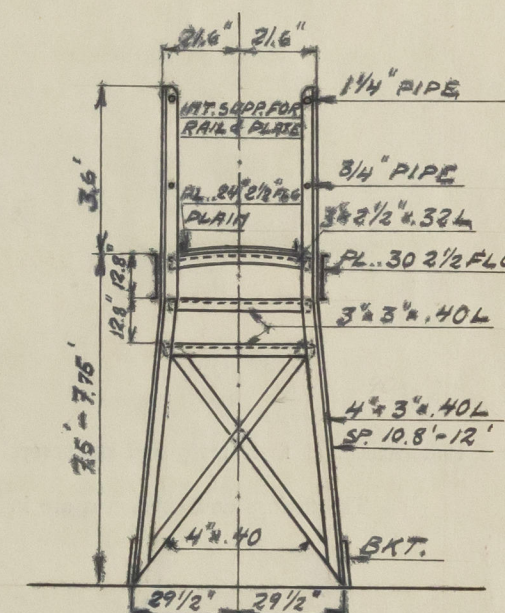
Particulars of Guard Rails:—

Open rail on freeboard, fore. and majoring parts of prop. deck.  
 Rimb. wire on bridge deck and prop. deck 42"-44" in height.



Particulars of Gangways, Lifelines, etc.:—

Gangway between prop. bridge and forecastle.



Particulars of Freeing Arrangements.

	Length of Bulwark	Height of Bulwark	Size of Freeing Ports	Number each side	Area each side	Rule area each side
After Well ...	Open rail.					
Forward Well ...	Open rail.					

State position of each freeing port ... (After Well:—  
 (F. and A. position and height above deck edge) Forward Well:—

State whether the freeing ports are fitted with shutters, bars, or rails, and give particulars of such:—

Additional area where sheer is less than standard.



PARTICULARS OF PROTECTION TO OPENINGS, ETC.

HATCHWAYS ON FREEBOARD AND SUPERSTRUCTURE DECKS.									
Description of Hatchway	← Freeboard deck →				← Fore deck →		← Side deck →		
	Cargo tanks & O.T.O.	Mammoth	Chain lock	Flower	Flower	Cargo	Side		
Dimensions of Hatchway	5' x 3.5'	2' φ	16" x 18"	3' x 2.63'	4' x 2' 6"	6' x 4'	11' 3" x 11' 2"	2' 10" x 3' 10"	
COAMINGS	Height above Deck	3 2 1/2"	9"	4 1/2"	9"	6"	3 2 1/2"	15"	
	Thickness	.40"	.40"	.40"	.26"	.38"	.40"	.44"	.30"
	Stiffeners	Vertical			.26"	.38"	.40"	.44"	.30"
	Brackets, Stays	3" x 2" x 40L						6" x 3" x 44" L	1-2 in front.
HATCH BEAMS	Number								
	Spacing								
FORE AND AFTERS	Number								
	Spacing								
	Unsupported Lengths								
	Scantling* and Sketch								
HATCH COVERS	Material	Steel				Wood	Steel		
	Thickness	.46"	.50"	.40"	.26"	.32" strong	.36"	.34" strong	
HATCH COVERS	How fitted	flange			Hinged	Hinged	flange	Hinged	
	Bearing Surface	3" x 2" x 40" L			W.T.		7" x 3" x 40"		
Spacing of Cleats	Res. bolts	14"-16"	17"	4"		18"-21"			
Number of Tarpaulins						2			
*Are wood fore and afters steel shod at all bearing surfaces? None.									
Are battens and wedges efficient and in good condition? Yes.									
Are tarpaulins in good condition and in accordance with rule requirements? Yes.									
Are lashings provided in accordance with rule requirements? Yes.									

Particulars of any special features:— Longitudinal framing. Electrically welded.

Endorsement at first survey and at surveys for renewal of Certificate:—

The fittings and appliances are in accordance with the particulars shown on this form (or as now modified) and are in good condition.



© 2020

Lloyd's Register Foundation