

Lloyd's Register of Shipping.

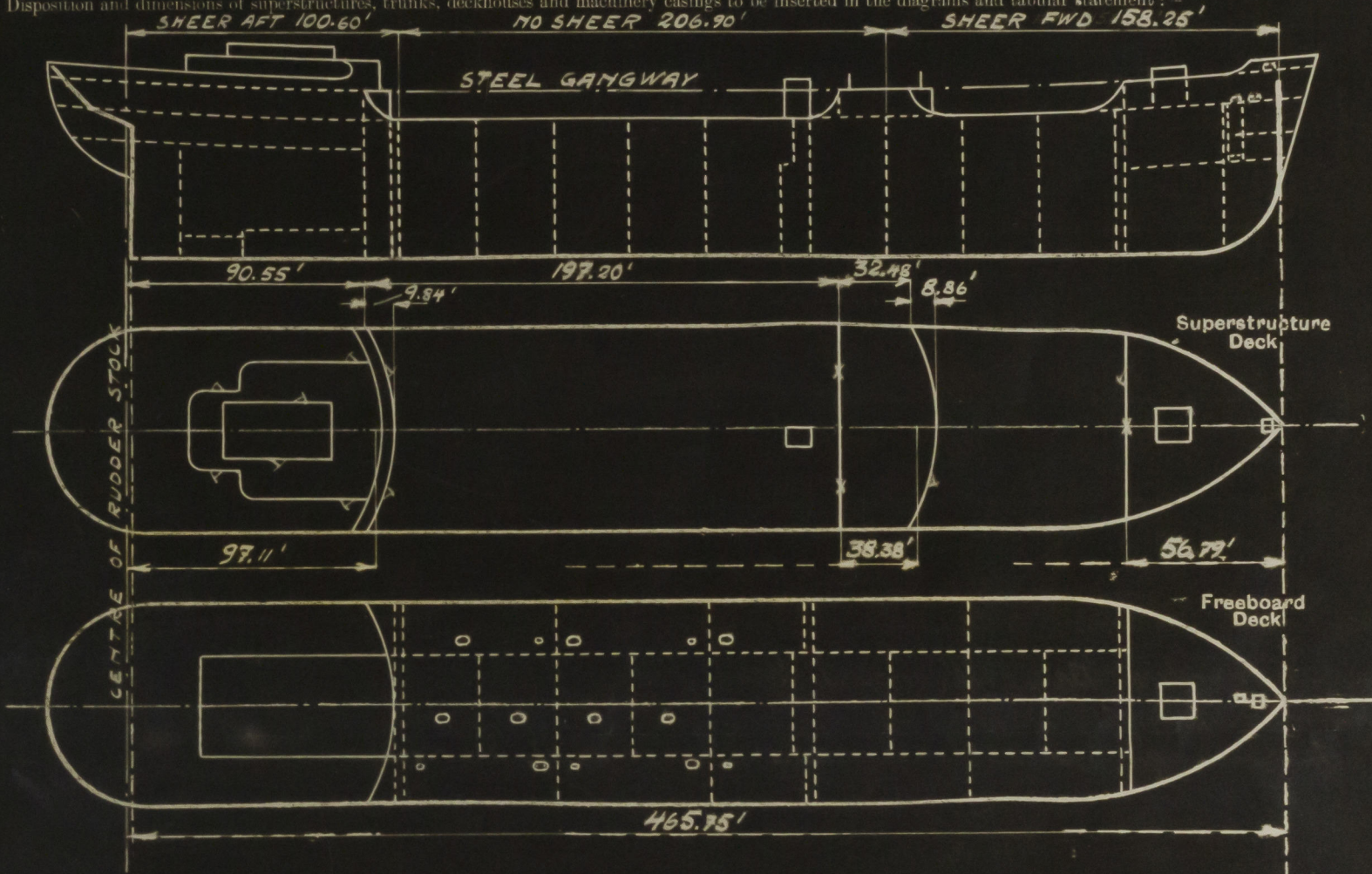
SURVEYS FOR FREEBOARD.

(CONDITIONS OF ASSIGNMENT.)

Index No.
(For London Office only).

Ship's Name *M/T "BRALI"* Port of Survey *Malmö.*
 Official Number _____ Surveyor's Signature *Adunden* *A. Börning*
 Nationality and Port of Registry *Norwegian, Oslo.* Date of Survey *Whilst building.*

Disposition and dimensions of superstructures, trunks, deckhouses and machinery casings to be inserted in the diagrams and tabular statement: -



Particulars of Superstructures, Trunks, Casings, Deckhouses.

	Coaming	Plating	Stiffeners	Spacing	End Attachments of Stiffeners	Size of Openings	Height of Sills	Height of Casings
Poop Bulkhead ... <i>Indrs Centre</i>	<i>6" W. to dk.</i>	<i>44"</i>	<i>8 7/8" x 3 1/2" x 50" L</i>	<i>27" - 31"</i>	<i>Pl. to W. to dk. girt.</i>	<i>60" x 25"</i>	<i>25"</i>	<i>7.75'</i>
Raised Quarter Deck Bulkhead ...	"	<i>48"</i>	<i>10" x 3 1/2" x 52" L</i>	<i>29" - 30"</i>	<i>Pl. to W. to dk. girt.</i>	<i>✓</i>	<i>✓</i>	<i>7.75'</i>
Bridge, After Bulkhead ...	"	<i>32"</i>	<i>3" x 2" x 32" L</i>	<i>33.5"</i>	<i>Pl. to W. to dk. girt.</i>	<i>48" x 37.5"</i>	<i>23"</i>	<i>7.75'</i>
Bridge, Forward Bulkhead ...	"	<i>46"</i>	<i>10" x 3 1/2" x 42" L</i>	<i>33.6"</i>	<i>Pl. to W. to dk. girt.</i>	<i>60" x 38"</i>	<i>18"</i>	<i>7.75'</i>
Forecastle Bulkhead ...	"	<i>30"</i>	<i>3 1/2" x 3" x 32" L</i>	<i>23" - 33"</i>	<i>Pl. to W. to dk. girt.</i>	<i>52" x 29"</i>	<i>25"</i>	<i>7.5'</i>
Main pump room casing ...	"	<i>32"</i>	<i>3 1/2" x 2 1/2" x 32" L</i>	<i>20" - 24"</i>	<i>Pl. to W. to dk. girt.</i>	<i>61" x 49"</i>	<i>15"</i>	<i>7.5'</i>
Trunk, Forward ...	"	<i>32"</i>	<i>3 1/2" x 2 1/2" x 32" L</i>	<i>20" - 24"</i>	<i>Pl. to W. to dk. girt.</i>	<i>54" x 33 1/2"</i>	<i>48"</i>	<i>9.75'</i>
Exposed Machinery Casings on Freeboard or Raised Quarter Decks ...	"	<i>28"</i>	<i>3" x 2" x 30" L</i>	<i>30"</i>	<i>Pl. to W. to dk. girt.</i>	<i>None</i>	<i>✓</i>	<i>3.25'</i>
Exposed Machinery Casings on Superstructure Decks ...	"	<i>28"</i>	<i>3" x 2" x 30" L</i>	<i>30"</i>	<i>Pl. to W. to dk. girt.</i>	<i>None</i>	<i>✓</i>	<i>3.25'</i>
Machinery Casings within Superstructures not fitted with Class I Closing Appliances ...	"	<i>28"</i>	<i>3" x 2" x 30" L</i>	<i>30"</i>	<i>Pl. to W. to dk. girt.</i>	<i>None</i>	<i>✓</i>	<i>3.25'</i>
Deckhouses on Poop Deck ...	<i>5" x 2 1/2" x 32" L</i>	<i>28"</i>	<i>3" x 32" L</i>	<i>28"</i>	<i>Pl. to W. to dk. girt.</i>	<i>61" x 25 1/4"</i>	<i>18"</i>	<i>18"</i>

Particulars of Closing Appliances (state if capable of being manipulated from both sides).

Poop Bulkhead ...	<i>Hinged W.T. steel door, manipulated from both sides.</i>
Raised Quarter Deck Bulkhead ...	<i>Hinged W.T. steel door, manipulated from both sides.</i>
Bridge, After Bulkhead ...	<i>2 1/2" shifting boards in welded channels, full height.</i>
Bridge, Forward Bulkhead ...	<i>Hinged W.T. steel door, manipulated from both sides.</i>
Forecastle Bulkhead ...	<i>3 1/4" shifting boards in welded channels, full height. (Pump room fwd.)</i>
Exposed Machinery Casings on Freeboard or Raised Quarter Decks ...	<i>Hinged W.T. steel door, manipulated from both sides. (Pump room fwd.)</i>
Exposed Machinery Casings on Superstructure Decks ...	<i>Hinged W.T. steel door, manipulated from both sides. (Pump room fwd.)</i>
Machinery Casings within Superstructures not fitted with Class I Closing Appliances ...	<i>Hinged W.T. steel door, manipulated from both sides. (Pump room fwd.)</i>
Deckhouses on Poop Deck ...	<i>2" thick solid leak doors, manipulated from both sides.</i>

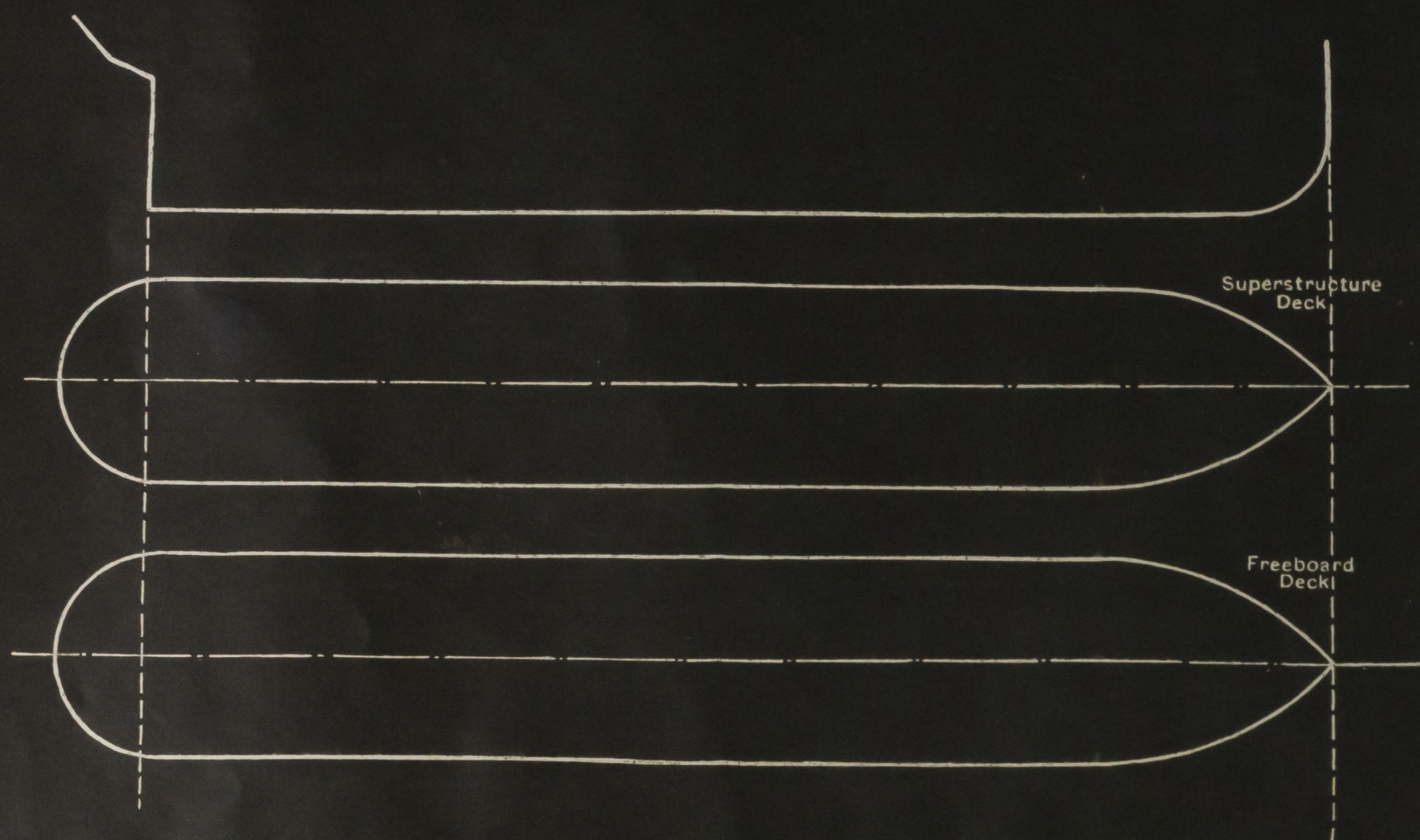
52.2
27.2



Lloyd's Register
Foundation

PARTICULARS OF PROTECTION TO OPENINGS, ETC.

The following diagrams should be used to indicate the positions of cargo and coaling hatchways, gangway, cargo and coaling ports, ventilators, companionways, etc., which would affect the seaworthiness of the ship:—



Particulars of fiddley, funnel and ventilator coamings, engine room skylight and other openings in machinery casing tops and their means of closing:—

Fiddley opening fitted with hinged steel cover.
Funnel plating thickness .20"
Vent. coamings:— Diam. 25"-37". Thicken. .20"-26". Height 4'4"-8'4"

Particulars of Flush Bunker Scuttles:— None.

Particulars of Companionways:— Poop space entrance at sides of poop deck house.
Size of openings 61" x 25 1/4". Height of rails above steel deck 18".
2" thick, solid teak doors, manipulated from both sides.

Particulars of Ventilators in exposed positions on freeboard and superstructure decks:—

Boat deck aft:— Diam. 9'-12". Thicken. .20". Height 30".
Poop deck:— Diam. 6'-9"-12". Thicken. .30"-32"-34"-40". Height 30"-66" (flanged)
Truck deck:— Strong posts of strong construction.
Fore deck:— Diam. 12"-18". Thicken. .34"-40". Height 36".

All vent. coamings are electrically welded to decks and provided with means for closing.

Particulars of Air Pipes in exposed positions on freeboard, raised quarter, or superstructure decks:—

Poop deck:— Lowness 30"-36" in height.
Truck deck:— " 7'-9" " (stayed to poop bilge)
Fore deck:— " 20"-36" " "

All pipes provided with means for closing.

Particulars of Gangway Cargo and Coaling Ports:— None.

M/T. Brali.

Particulars of Scuppers and Sanitary Discharge Pipes:— No scuppers below foreboard deck.

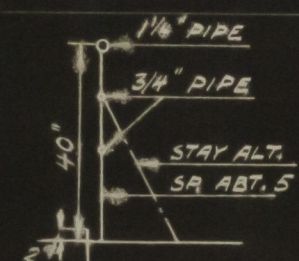
Sanitary discharge pipes from poop deck house and from poop space are led overboard about 12" above 2nd deck. (compatible in motor space) and those from bridge deck house led overboard above foreboard deck. All discharge pipes are fitted with storm valves and drain pipes from the poop space, also provided with non-detachable screen plugs at their inner ends.

Particulars of Side Scuttles:— All side scuttles are of strong construction and fitted with hinged deadlights.

Vertical distance of Sill of lowest Side Scuttle above top of keel About 39".

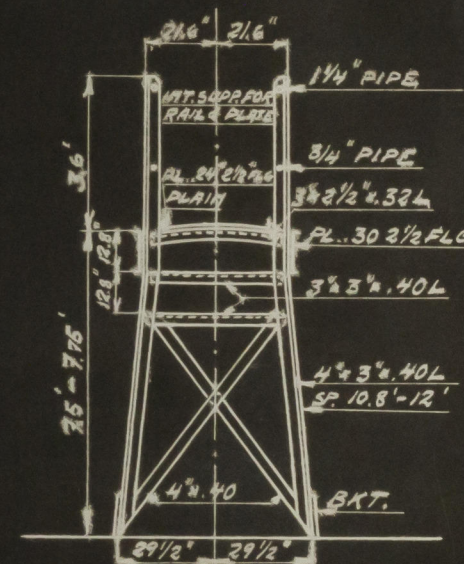
Particulars of Guard Rails:—

Open rail on foreboard, fore and main part of poop deck.
Bolted rail on bridge deck and poop deck 42"-44" in height.



Particulars of Gangways, Lifelines, etc.:—

Gangway between poop, bridge and forecastle.



Particulars of Freeing Arrangements.

	Length of Bulwark	Height of Bulwark	Size of Freeing Ports	Number each side	Area each side	Rule area each side
After Well	Open rail.					
Forward Well	Open rail.					

State position of each freeing port (After Well:—

(F. and A. position and height above deck edge) (Forward Well:—

State whether the freeing ports are fitted with shutters, bars, or rails, and give particulars of such:—

Additional area where sheer is less than standard.



© 2020

Lloyd's Register Foundation

PARTICULARS OF PROTECTION TO OPENINGS, ETC.

HATCHWAYS ON FREEBOARD AND SUPERSTRUCTURE DECKS.									
Description of Hatchway		← Freeboard deck →		← Poop deck →		← Sctr. deck →			
Dimensions of Hatchway		Cargo tank & O.T.P. Manhole		Churn lock		Flores. Flores.		Cargo. Sctr. sp.	
COAMINGS	Height above Deck	5' x 3.5'	2' φ	16" x 18"	3' x 2.63'	1' x 2'-6"	6' x 4'	11'-3" x 11'-2"	2'-10" x 3'-10"
	Thickness	3 1/2"	9"	4 1/2"	9"	6"	3 1/2"	3 1/2"	15"
	Sides	40"	40"	40"	26"	38"	40"	44"	30"
	Ends	40"			26"	38"	40"	44"	30"
	Stiffeners	Vertical	3" x 2" x 40L					6" x 3" x 44L	
HATCH BEAMS	Brackets, Stays							1-2 in front.	
	Number								
	Spacing								
FORE AND AFTERS	Scantling and Sketch								
	Bearing Surface								
	Number								
HATCH COVERS	Material		Steel			Wood	Steel		
	Thickness	46"	50"	40"	26"	32" strong	36"	34" strong	
	How fitted	Hinged			Hinged	Hinged	Attn.	Hinged	
Spacing of Cleats	Bearing Surface	3" x 2" x 40L			W.F.		3"	7" x 3" x 40"	
	Number of Tarpaulins								
Spacing of Cleats		14"-16"	17"	4"			18"-21"		
Number of Tarpaulins							2		
*Are wood fore and afters steel shod at all bearing surfaces? <i>None.</i>									
Are battens and wedges efficient and in good condition? <i>Yes.</i>									
Are tarpaulins in good condition and in accordance with rule requirements? <i>Yes.</i>									
Are lashings provided in accordance with rule requirements? <i>Yes.</i>									

Particulars of any special features:— *Longitudinal framing. Electrically welded.*

Endorsement at first survey and at surveys for renewal of Certificate:—

The fittings and appliances are in accordance with the particulars shown on this form (or as now modified) and are in good condition.

