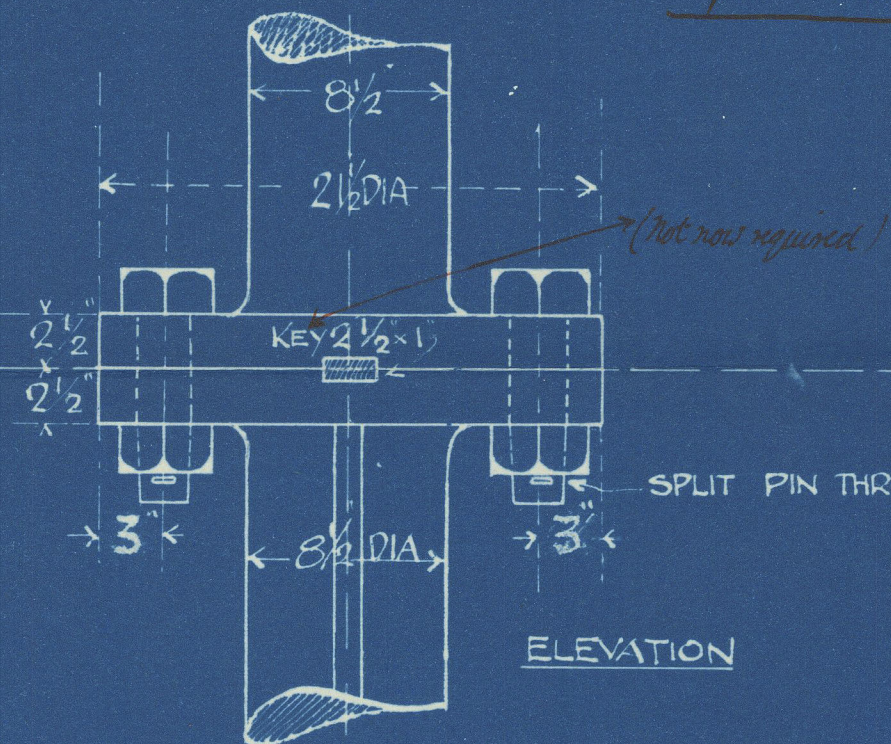


S.S. Nº 553

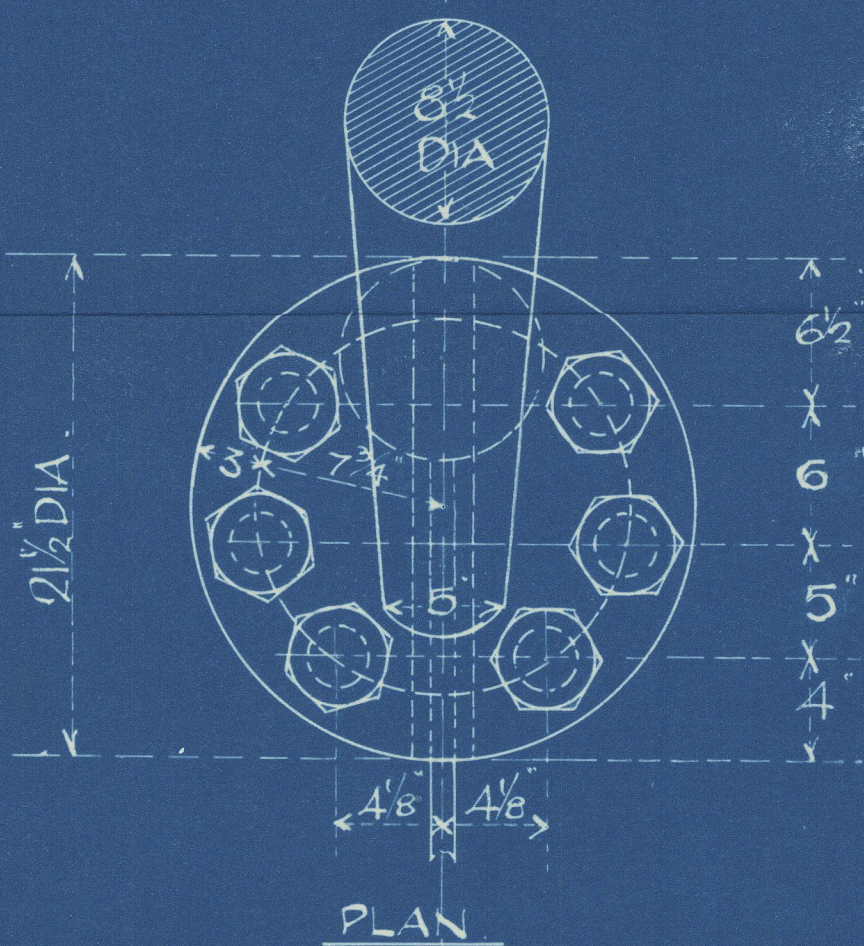
$$\underline{A_{III-5} \times D_{2-995} = 334}$$

TO LLOYDS RULES.

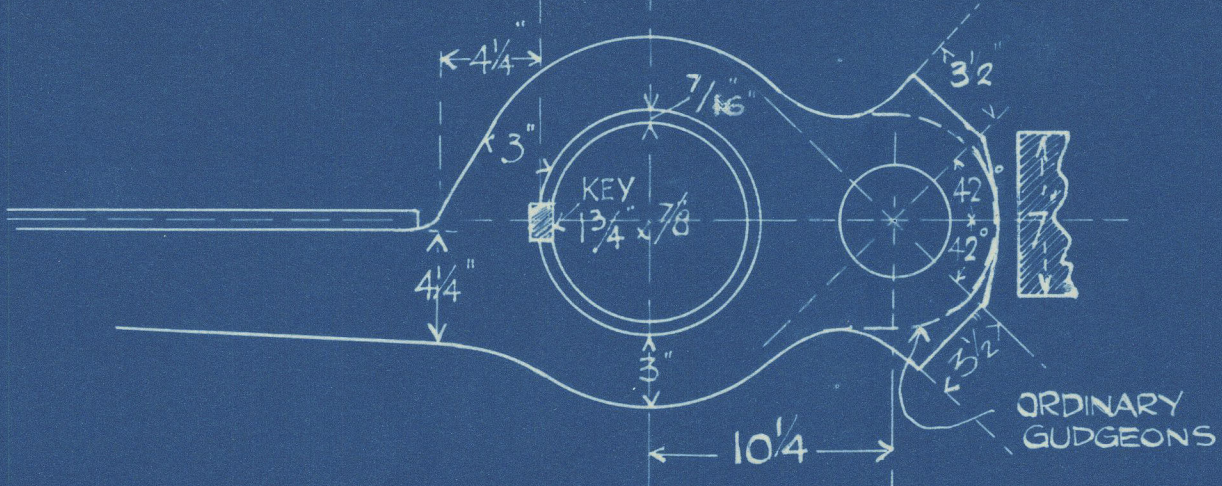
FITTED
6 BOLTS IN COUPLING
2 1/2" DIA NUTS UNDERSIDE



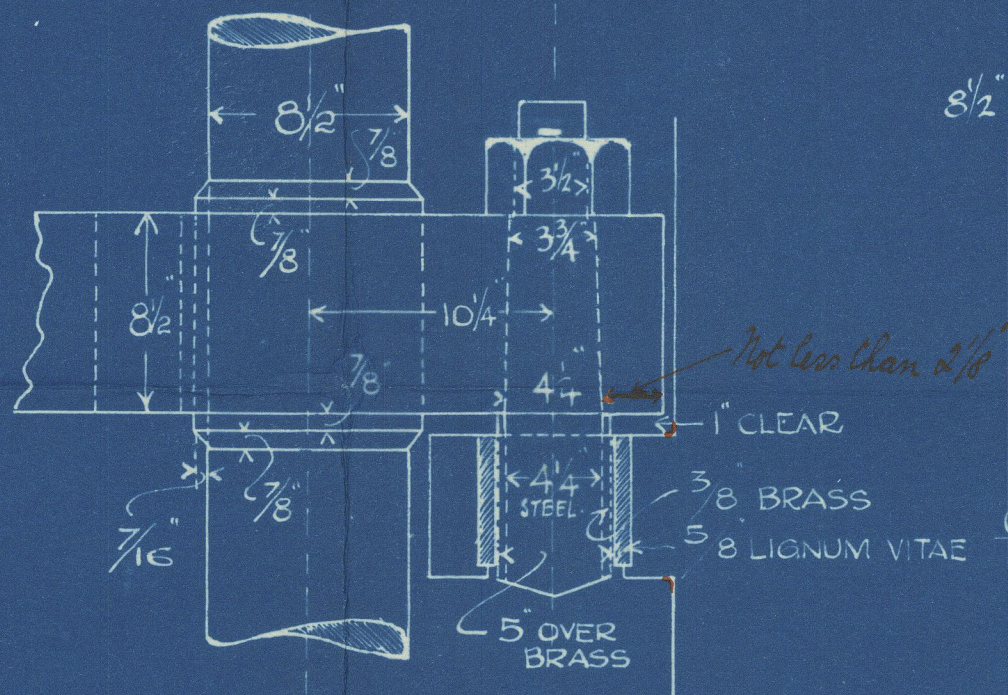
DETAIL OF COUPLING.



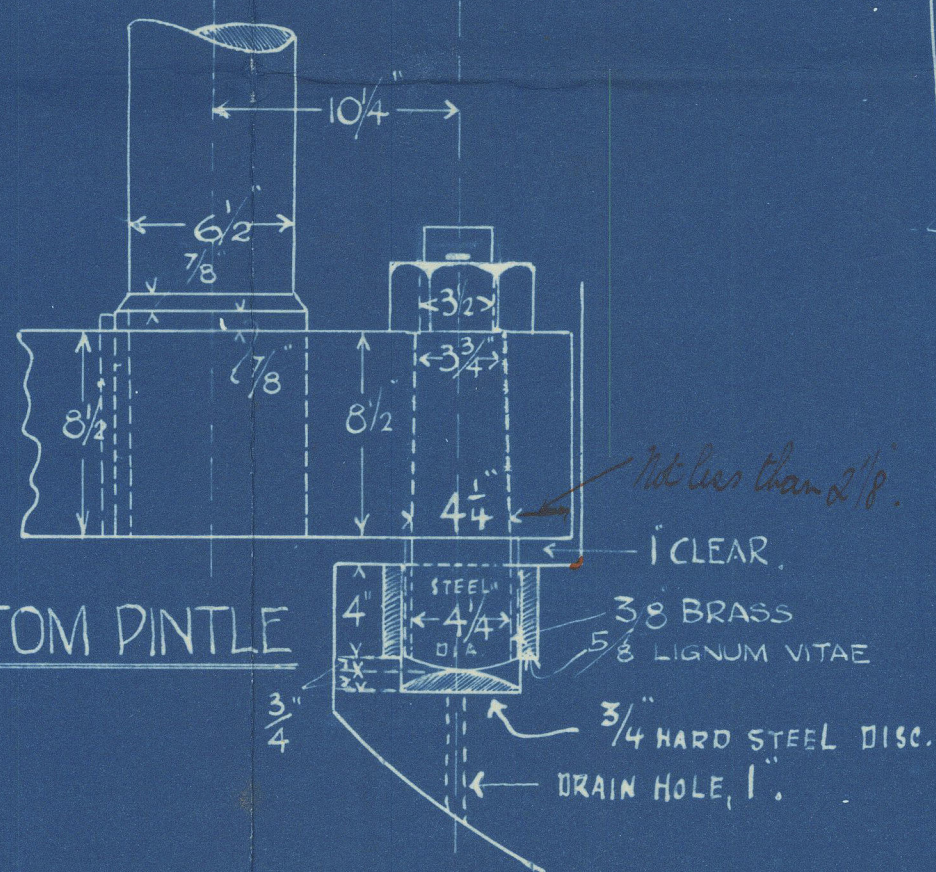
PLAN OF STOPPER GUDGEONS.



DETAIL OF PINTLES.



DETAIL OF BOTTOM PINTLE



SUNDERLAND.

MESSRS J. L. THOMPSON & SONS.

S.S. N^o 553.

RUDDER.

S.S. "FYLLINGDALE"

SUNDERLAND RPT. NO.

28960



© 2020

Lloyd's Register
Foundation

002743-002749-0086