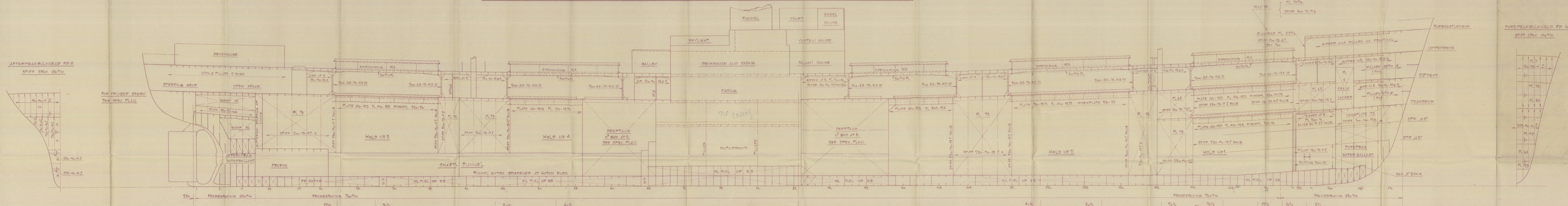


# YARD No 92. PROFILE AND DECKPLANS. SCALE 1:100.



## DIMENSIONS

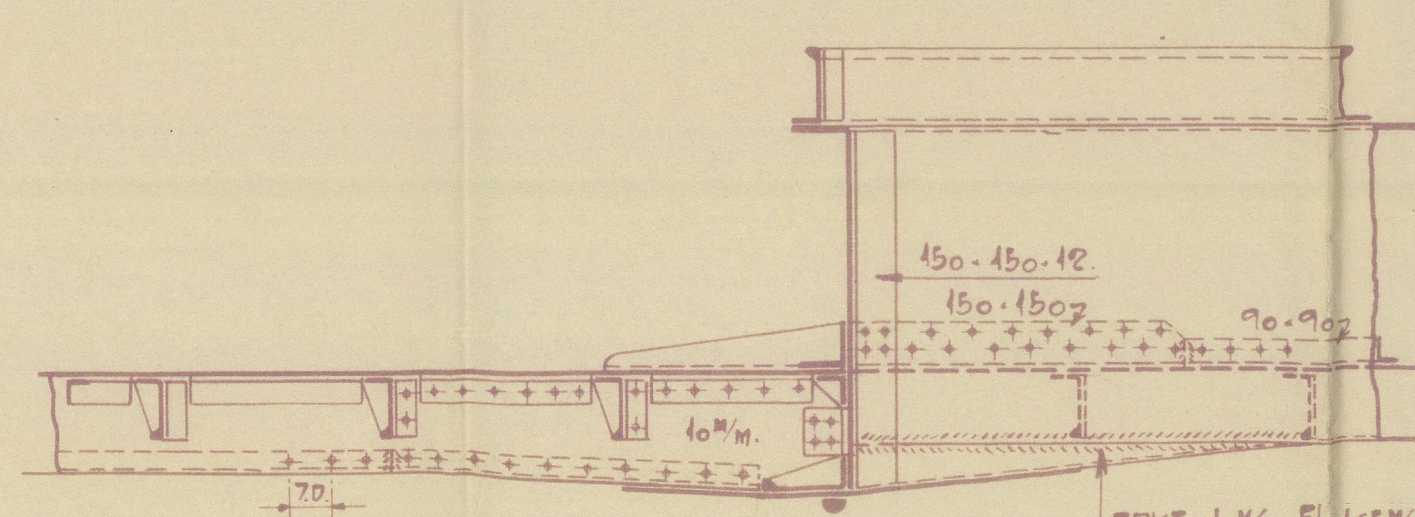
LENGTH BETWEEN F.P. = 415'-0" = 126.488 MTR.  
 BREADTH MOULDED = 56'-0" = 17.068 MTR.  
 DEPTH MOULDED TO UPPERDECK = 37'-6" = 11.430 MTR.  
 DEPTH MOULDED TO Q/UPDECK = 28'-7" = 8.710 MTR.  
 DECK 3045W BELOW Q/UPDECK.  
 DECK IN MOTORROOM 3030W BELOW Q/UPDECK.  
 HEIGHT OF FORECASTLE = 7'-0" = 2.134 MTR.

## CLASSES

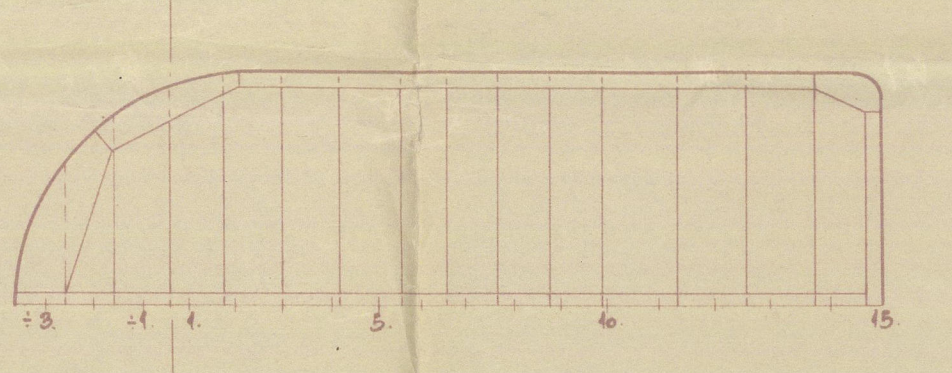
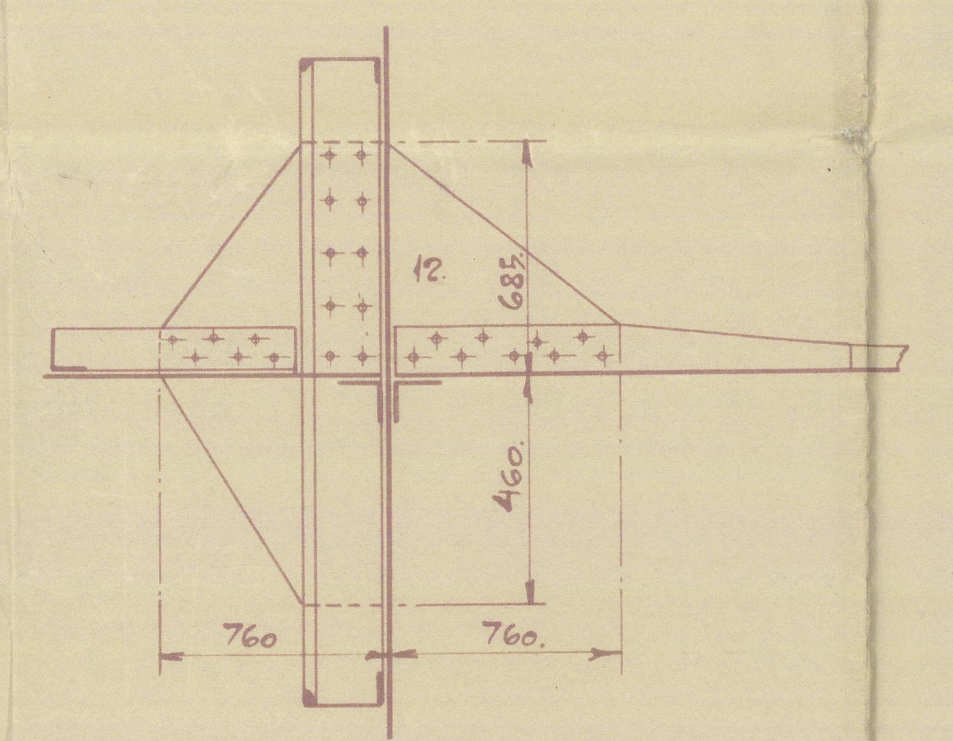
LLOYD'S No 100 A 1 WITH FREEBOARD.  
 CORRESPONDING TO A STEAMSHIP EXTERIOR THAT CONTEMPLATED BY THE RULES FOR A COMPLETE SUPERSTRUCTURE VESSEL WITH TONNAGE OPENING.  
 INTENDED TO CARRY OIL FUEL IN DOUBLE BOTTOM AND DEERTANKS FR. 54 TO 66 AND FR. 36 TO 45 AS Q/UPDECK. SEE SPEC. PLANS. SECT. 20 OF THE RULES TO BE COMPLY WITH.  
 ALL BUILDINGS ARE BASED ON 100M. STANDARDS.  
 SCALLINGS IN PARENTHESES COVERS EXTRA REQUIREMENTS.

## NUMERALS

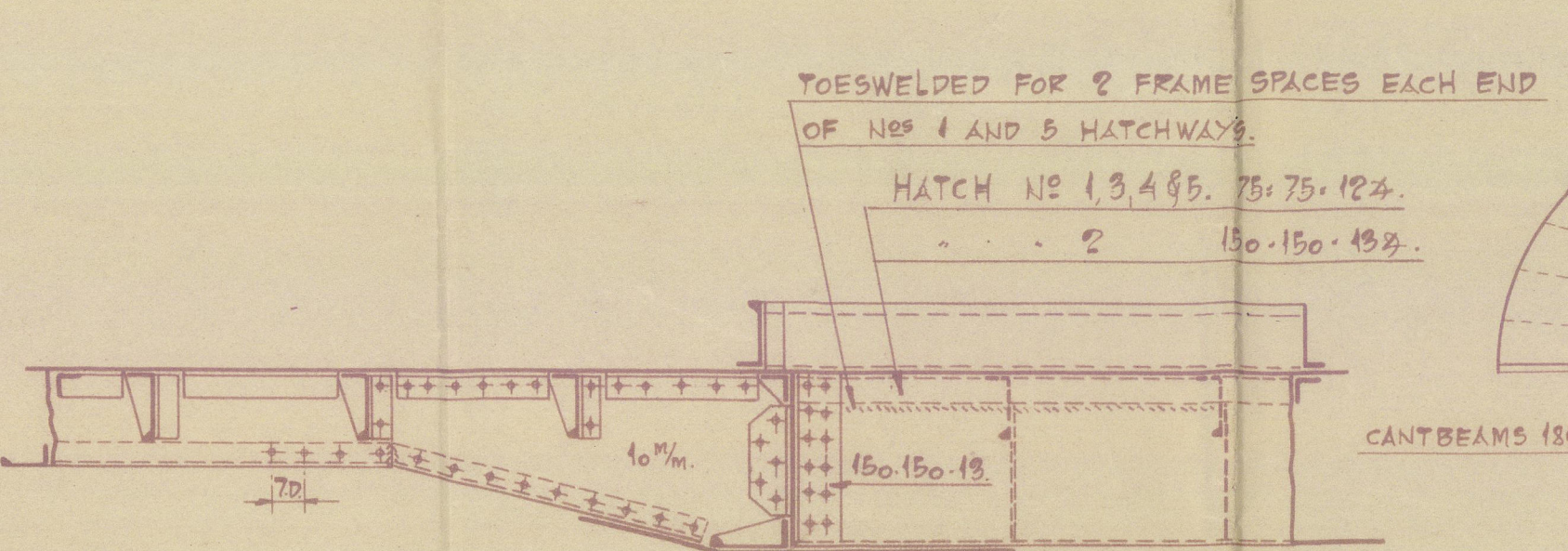
$D = 28.58 + 2.0 = 30.58$   
 $L \times D = 415 \times 30.58 = 12684$   
 $L \times (D + D) = 415 \times (30.58 + 30.58) = 51404$   
 $L \times D = 415 \times 30.58 = 12684$



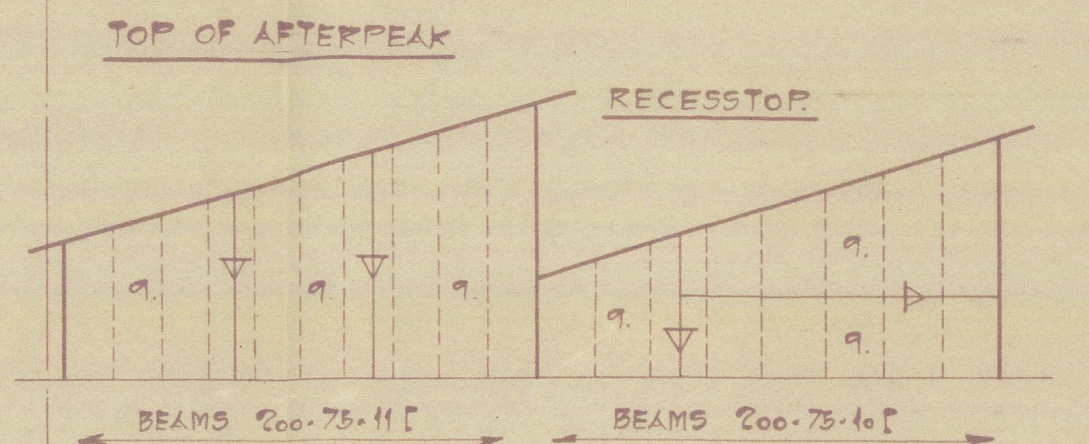
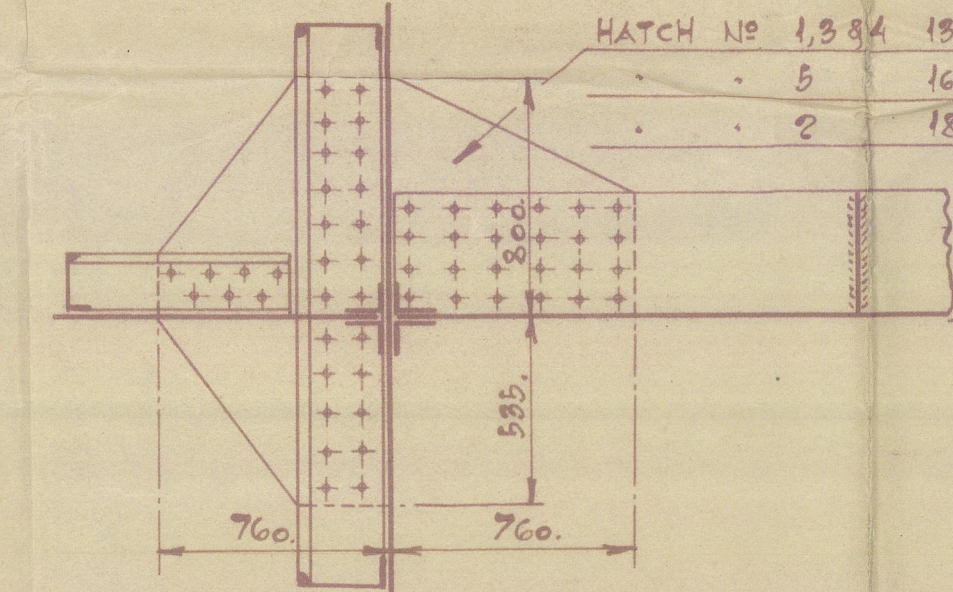
GIRDERS AND HATCHCORNERS UPPERDECK



GIRDERS IN LINE W. HATCH

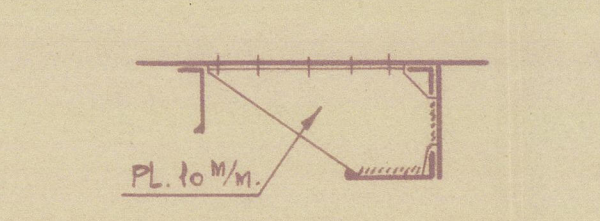


GIRDERS AND HATCHCORNERS Q/UP - SEP DECK

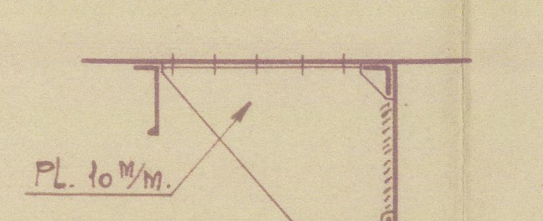


TOP OF AFTERPEAK

TRIPPING KLEES UPPERDECK



TRIPPING KLEES Q/UP DECK



To built  
 Profile + Deck  
 for  
 Yard 92. 1/10/2766  
 N.A. HANSEN  
 1/5 Sally Hansen

LYSTING	
NO. 1	1
NO. 2	2
NO. 3	3
NO. 4	4
NO. 5	5
NO. 6	6
NO. 7	7
NO. 8	8
NO. 9	9
NO. 10	10
NO. 11	11
NO. 12	12
NO. 13	13
NO. 14	14
NO. 15	15
NO. 16	16
NO. 17	17
NO. 18	18
NO. 19	19
NO. 20	20
NO. 21	21
NO. 22	22
NO. 23	23
NO. 24	24
NO. 25	25
NO. 26	26
NO. 27	27
NO. 28	28
NO. 29	29
NO. 30	30
NO. 31	31
NO. 32	32
NO. 33	33
NO. 34	34
NO. 35	35
NO. 36	36
NO. 37	37
NO. 38	38
NO. 39	39
NO. 40	40
NO. 41	41
NO. 42	42
NO. 43	43
NO. 44	44
NO. 45	45
NO. 46	46
NO. 47	47
NO. 48	48
NO. 49	49
NO. 50	50
NO. 51	51
NO. 52	52
NO. 53	53
NO. 54	54
NO. 55	55
NO. 56	56
NO. 57	57
NO. 58	58
NO. 59	59
NO. 60	60
NO. 61	61
NO. 62	62
NO. 63	63
NO. 64	64
NO. 65	65
NO. 66	66
NO. 67	67
NO. 68	68
NO. 69	69
NO. 70	70
NO. 71	71
NO. 72	72
NO. 73	73
NO. 74	74
NO. 75	75
NO. 76	76
NO. 77	77
NO. 78	78
NO. 79	79
NO. 80	80
NO. 81	81
NO. 82	82
NO. 83	83
NO. 84	84
NO. 85	85
NO. 86	86
NO. 87	87
NO. 88	88
NO. 89	89
NO. 90	90
NO. 91	91
NO. 92	92
NO. 93	93
NO. 94	94
NO. 95	95
NO. 96	96
NO. 97	97
NO. 98	98
NO. 99	99
NO. 100	100