

N^o. 54 M/V "CEDARDALE"

MIDSHIP SECTION.

SCALE 1/2" = 1 FOOT

DIMENSIONS.

LENGTH 400'-0" BP BREADTH 59'-4" MLD DEPTH 34'-0" MLD

To CLASS LLOYDS 100A.1. "CARRYING PETROLEUM IN BULK"
SPECIAL NOTATION "LONGITUDINAL FRAMING AT BOTTOM AND AT DECK"
SCANTLINGS INCLUDING SHELL CLEAR OF CARGO OIL
COMPARTMENTS TO BE SPECIALLY CONSIDERED
SUITABLE INCREASES TO BE MADE FOR SHEER AT ENDS.

-NUMERALS-

LENGTH BP ON LVL	L	=	400'-0"
BREADTH MLD	B	=	59'-4"
DEPTH MLD TO UPPER DECK	D	=	34'-0"
L x D	400'-0" x 34'-0"	=	15640.0
L x (B+D)	400'-0" x 59'-0" + 34'-0"	=	42812.0
L/D	400/34.0	=	13.52

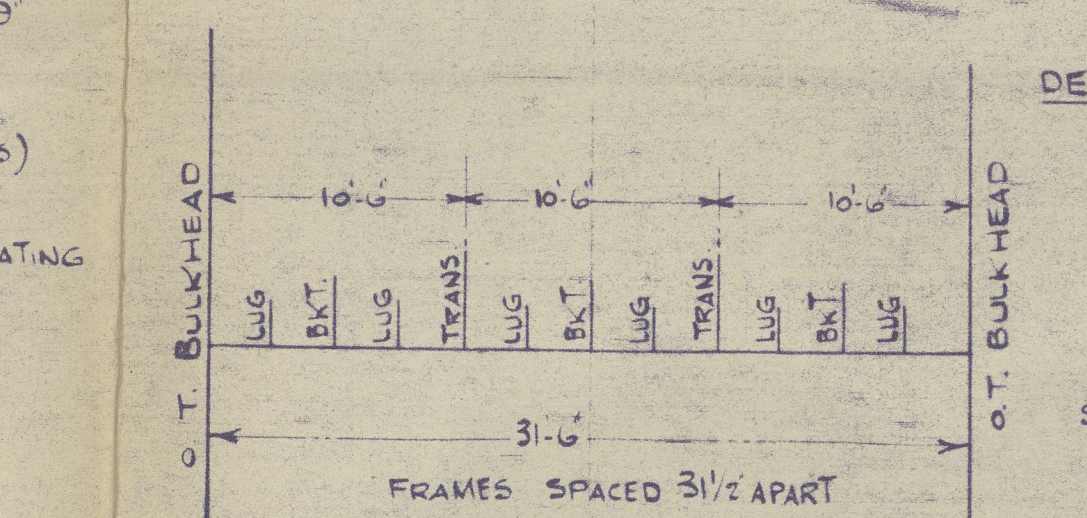
RULE EQUIPMENT.

2 ND LONGIT. N ^o 4 x (B+D)	=	42812
POOP 92'7 1/2" x 7'5 1/2"	=	512
BRIDGE 47'5" x 7'5 1/2"	=	207
FORECASTLE 48'0" x 7'5 1/2"	=	210
HOUSE ON POOP DECK 81' x 7'5 1/2"	=	304
BRIDGE	=	108
ON UPPER BRIDGE 40' x 7'5 1/2"	=	150
NAVIGATOR	=	157
EQUIPMENT NUMBER	=	44658

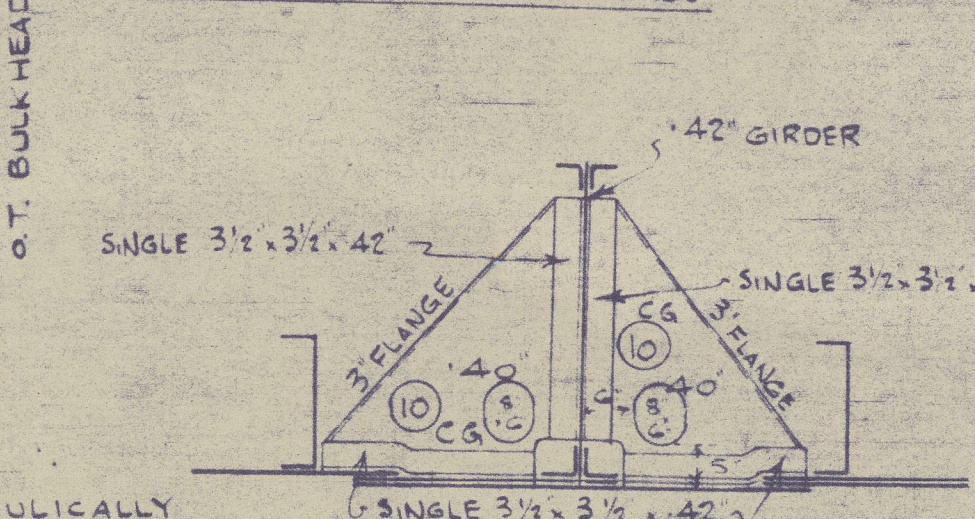
3 BOWER ANCHORS 7 1/2 CWT EACH STOCKLESS	1 ST B	2 ND B	3 RD B
1 STREAM ANCHOR 22	7 1/2 CWT	7 1/2 CWT	7 1/2 CWT (Stockless)
300 FATHOMS 2 1/4" STUD CHAIN CABLE 890 1/4 CWT			
120	5 1/4" FLEXIBLE STEEL WIRE 6 x 12		
130	5 1/4" SPECIAL FLEXIBLE STEEL WIRE 6 x 12		
2 HAWSERS 100 FATHOMS 2 1/4" STEEL WIRE 6 x 12			
2 WARPS 100	2 1/4" 6 x 12		

SECTION THRO WING TANKS. SHOWING INTERMEDIATE FRAMING BETWEEN TRANSVERSES.

- 9 CENTRE TANKS -
- LENGTH 31'-0" -
- 2 TRANSVERSES 10'-6" APART -

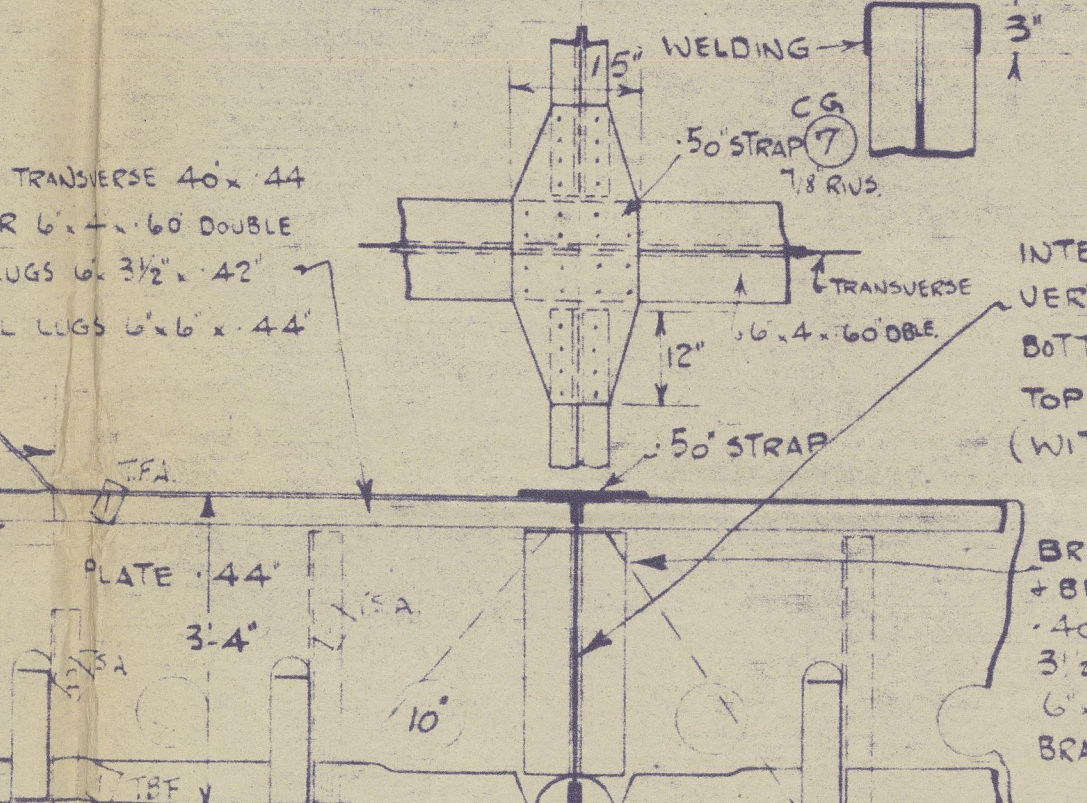


DETAIL OF BRACKETS BETWEEN TRANSVERSES + TRANSVERSES + BULKHEADS



ALL ATTACHMENT ANGLES TO BULKHEADS TO BE HYDRAULICALLY
RIVETED ON THE GROUND PRIOR TO ERECTION.
NO PLATE SEAMS OR BUTTS TO BE ARRANGED IN WAY OF THE
CONNECTIONS OF THE TRANSVERSES + STRINGERS TO BULKHEADS.

IN CONNECTIONS MARKED THUS \checkmark RIVET HOLES IN BOTH BARS + BULKHEAD TO BE
PUNCHED 1/8" SMALL + CAREFULLY REAMERED OUT AFTER ASSEMBLY.
CONNECTIONS TO BE THEN DISMANTLED AND SURFACES CLEANED AND ALL
BURRS REMOVED, ON ASSEMBLY, BOLT FITTED IN EVERY 3RD HOLE
ALSO IN BOTH HOLES AT BOTH ENDS OF BARS AND ALL THOROUGHLY
HARDENED UP, END OF BARS ON FACE SIDE OF BULKHEADS TO BE
WELDED PRIOR TO RIVETING. (SEE SKETCH)



INTERCOSTAL GIRDER 40' x 42"
VERTICAL ANGLES 6' x 42" DOUBLE
BOTTOM ANGLES 4' x 42" 50
TOP ANGLES 3' x 42" 44" DOUBLE
(WITH 50 STRAP AT TRANSVERSE)

BRACKETS MIDWAY BETWEEN TRANSVERSES
+ BULKHEADS
40" THICK, 3" FLANGE, VERT + BOT. BARS
6' x 3' x 42" SINGLE
6' x 3' x 42" VERTICAL STIFFERS BETWEEN
BRACKETS + TRANSVERSES + BULKHEADS

BRACKETS LUGGED TO LONGITUDINALS
FRAMES 55 TO 73 AND 123 TO 145.

8'-0" INCREASED AT ENDS

KEEL OUT
57' x 36' - 78"

BUTTS QUINTUPLE FOR 1/2 L 1/4 INCH.

QUADRUPLE AT ENDS

STRAKE C 70 FORWARD OF 1/2 LENGTH TO COLLISION BULKHEAD

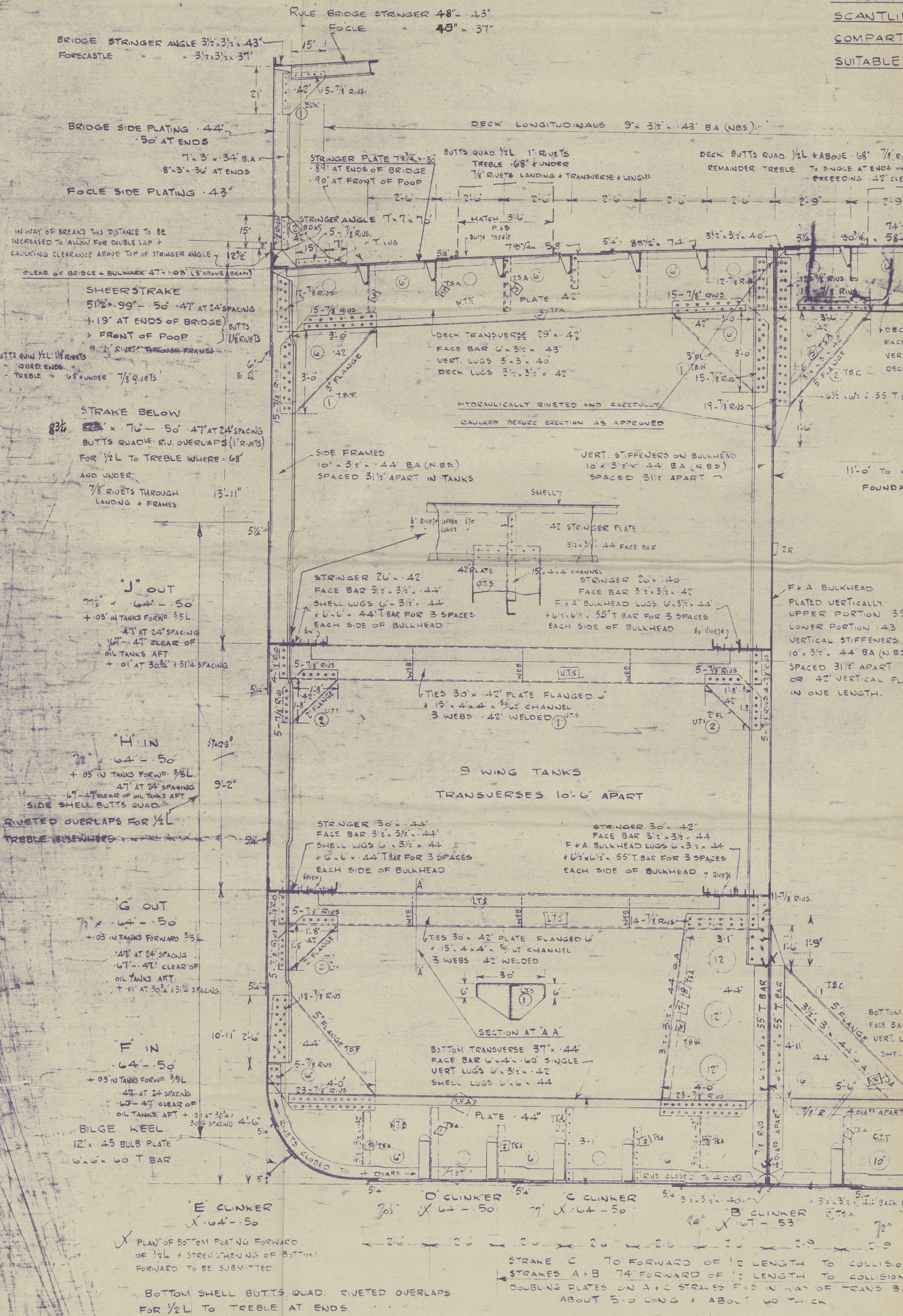
STRAKE A 18 74 FORWARD OF 1/2 LENGTH TO COLLISION BULKHEAD

DOUBLING PLATES ON ALL STRAKES F15 IN WAY OF TRANS BULKHEADS

ABOUT 5'-0" LONG + ABOUT 1/4" THICK

BOTTOM LONGITUDINALS 17' x 4' x 52/68 CHANNELS (NBS)

ALL LOOKING OUTBOARD IN WING TANKS + ALL LOOKING TO STARBOARD IN CENTRE TANKS



RULE BRIDGE STRINGER 48" x 43"

FOCILE " 48" x 37"

BRIDGE SIDE PLATING .44"

FOCILE SIDE PLATING .43"

7' x 3' x 34" BA

8' x 3' x 34" AT ENDS

STRINGER PLATE 7/8" x 8"

8' x 7' x 7/8" BA

8' x 7' x 7/8" BA

8' x 7' x 7/8" BA

8' x 7' x 7/8" BA

8' x 7' x 7/8" BA

8' x 7' x 7/8" BA

8' x 7' x 7/8" BA

8' x 7' x 7/8" BA

8' x 7' x 7/8" BA

8' x 7' x 7/8" BA

8' x 7' x 7/8" BA

8' x 7' x 7/8" BA

8' x 7' x 7/8" BA

8' x 7' x 7/8" BA

8' x 7' x 7/8" BA

8' x 7' x 7/8" BA

8' x 7' x 7/8" BA

8' x 7' x 7/8" BA

8' x 7' x 7/8" BA

8' x 7' x 7/8" BA

8' x 7' x 7/8" BA

8' x 7' x 7/8" BA

8' x 7' x 7/8" BA

8' x 7' x 7/8" BA

8' x 7' x 7/8" BA

8' x 7' x 7/8" BA

8' x 7' x 7/8" BA

8' x 7' x 7/8" BA

8' x 7' x 7/8" BA

8' x 7' x 7/8" BA

8' x 7' x 7/8" BA

8' x 7' x 7/8" BA

8' x 7' x 7/8" BA

8' x 7' x 7/8" BA

8' x 7' x 7/8" BA

8' x 7' x 7/8" BA

Penk



© 2020

Lloyd's Register
Foundation

AT AT SPACING
67-47 CLEAR OF

BLYTHSWOOD S. B. CO L^D

N^o 54

M/V. "CEDARDALE"

MIDSHIP SECTION.

(AS BUILT).

GLASGOW REPORT No 61150



© 2020

Lloyd's Register
Foundation

002784-002789-0016