

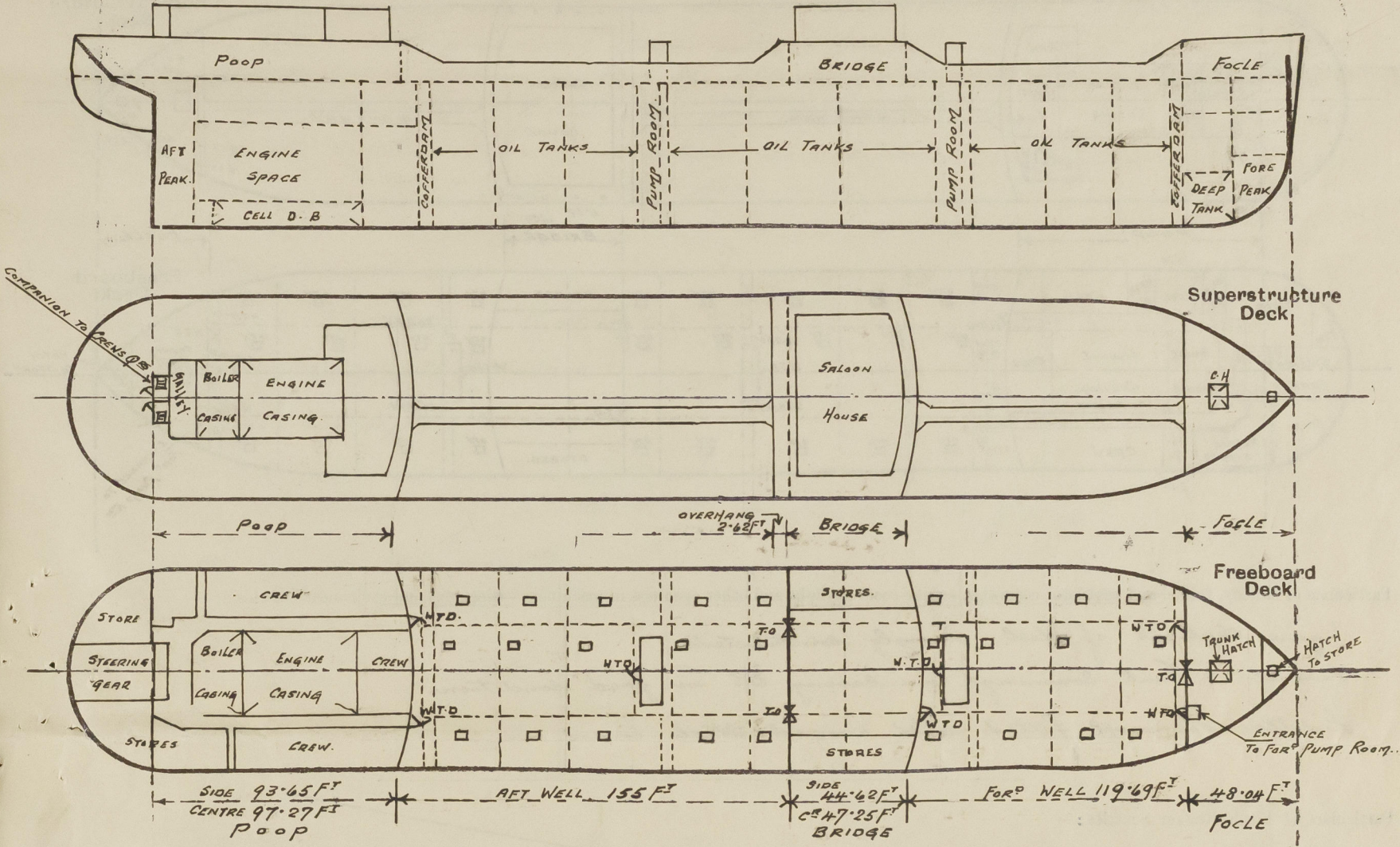
Lloyd's Register of Shipping.

SURVEYS FOR FREEBOARD.

(CONDITIONS OF ASSIGNMENT.)

Ship's Name	"CEDARDALE"	Port of Survey	Glasgow.
Official Number	167260	Surveyor's Signature	R. Dunsmuir
Nationality and Port of Registry	BRITISH. LONDON.	Date of Survey	while building

Disposition and dimensions of superstructures, trunks, deckhouses and machinery casings to be inserted in the diagrams and tabular statement : —



Particulars of Superstructures, Trunks, Casings, Deckhouses.

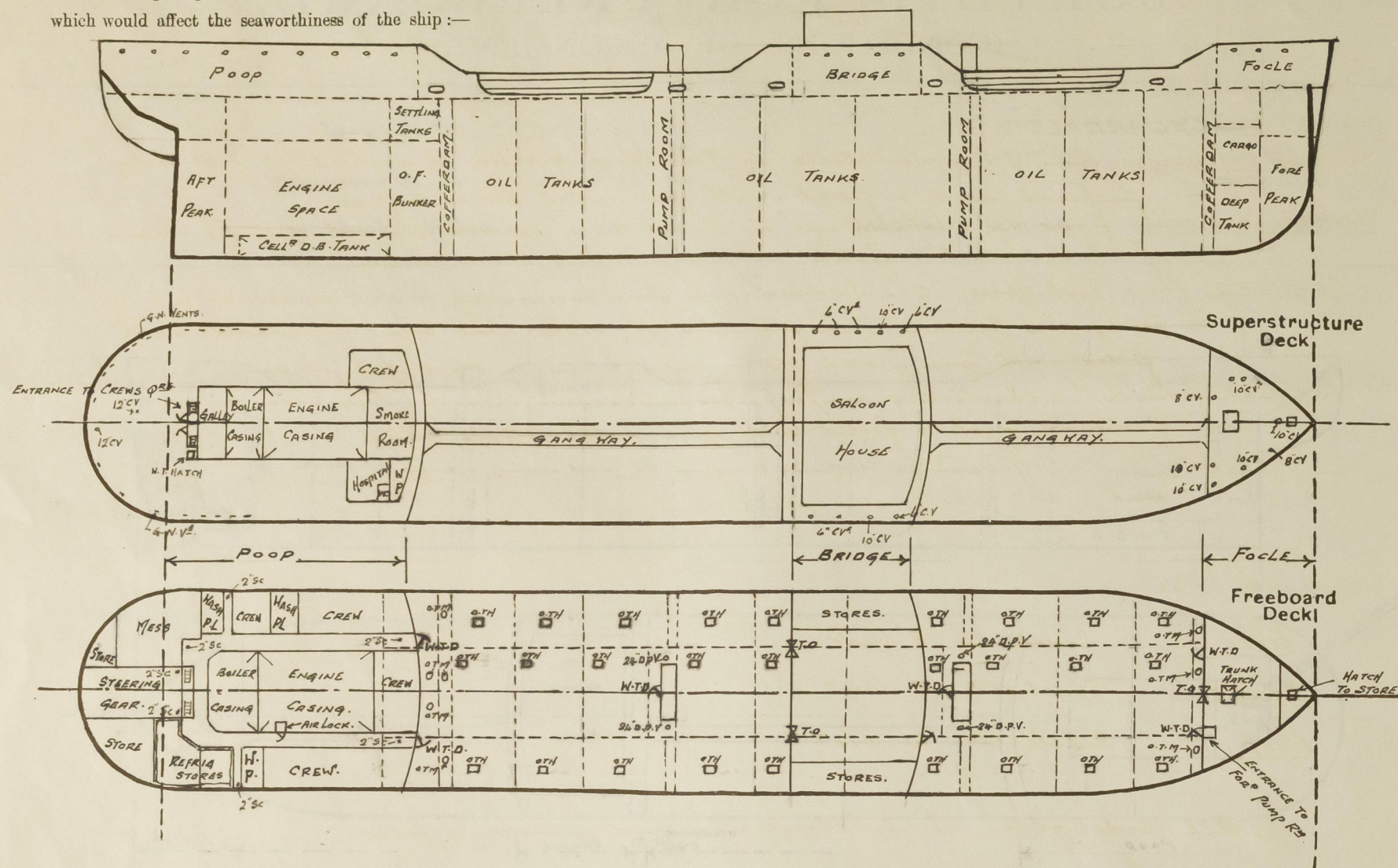
	Coaming	Plating	Stiffeners	Spacing	End Attachments of Stiffeners	Size of Openings	Height of Sills	Height of Casings
Poop Bulkhead	44 PLATING ✓		B.A. ✓ 10" x 3 1/2" x 40	30"	LUGGED Top & Bottom	1 P & S ✓ 4'-6" x 2'-9"	18" ✓	7'-6" ✓
Raised Quarter Deck Bulkhead ...								
Bridge, After Bulkhead	30 PLATING ✓		ANGLE ✓ 4" x 3" x 32	30"	NONE	1 P & S ✓ 4'-6" x 3'-6"	18" ✓	7'-6" ✓
Bridge, Forward Bulkhead	44 PLATING ✓		B.A. ✓ 10" x 3 1/2" x 40	30"	LUGGED Top & Bottom	1 & 4'-6" x 2'-9"	18" ✓	7'-6" ✓
Forecastle Bulkhead	30 PLATING ✓		ANGLE ✓ 4 x 3 x 32 & 36	30" & 32"	NONE	1 P & S 5'-0" x 2'-0" 1 & 5'-0" x 4'-1"	18" ✓	7'-6" ✓
Trunk, Aft								
Trunk, Forward								
Exposed Machinery Casings on Freeboard or Raised Quarter Decks ...								
Exposed Machinery Casings on Superstructure Decks	42 x 34 ✓	30 ✓	ANGLE ✓ 3 x 3 x 30	30 3/4	BRACKETED AT CASING TOP.	NONE	✓	8'-0"
Machinery Casings within Superstructures not fitted with Class I Closing Appliances								
Deckhouses on Flush Deck Ships ...								

Particulars of Closing Appliances (state if capable of being manipulated from both sides).

Poop Bulkhead	Hinged Steel W.T. Doors. ✓	Workable from both sides. ✓
Raised Quarter Deck Bulkhead ...		
Bridge, After Bulkhead	Portable plates secured by Lock bolts. ✓	
Bridge, Forward Bulkhead	Hinged Steel W.T. Doors. ✓	Workable from both sides. ✓
Forecastle Bulkhead	Hinged Steel W.T. Doors. ✓	Workable from both sides. ✓
Exposed Machinery Casings on Freeboard or Raised Quarter Decks ...	Portable plate on Centre Line opening secured by Lock bolts. ✓	
Exposed Machinery Casings on Superstructure Decks	No openings. ✓	
Machinery Casings within Superstructures not fitted with Class I Closing Appliances		
Deckhouses on Flush Deck Ships ...		

PARTICULARS OF PROTECTION TO OPENINGS, ETC.

The following diagrams should be used to indicate the positions of cargo and coaling hatchways, gangway, cargo and coaling ports, ventilators, companionways, etc., which would affect the seaworthiness of the ship:—



Particulars of fiddle, funnel and ventilator coamings, engine room skylight and other openings in machinery casing tops and their means of closing:—

Engine skylight of steel, strongly constructed.
Funnel & Vent coamings on casing top in good condition.
Fiddle openings fitted with hinged steel covers.

Particulars of Flush Bunker Scuttles:—

None.

Particulars of Companionways:—

ENTRANCE TO MAIN PUMP ROOMS	ENTRANCE TO FORWARD PUMP ROOM.	ENTRANCE TO CREWS QUARTERS AT AFT END OF CASING ON POOP DECK.
STEEL CASING 7'-0" HIGH. OPENING AT AFT END 4'-6" x 2'-9" FITTED WITH HINGED STEEL W.T. DOOR. SILL 18" DOOR WORKABLE FROM BOTH SIDES.	OPENING IN FOCL BHP 5'-0" x 2'-0" FITTED WITH HINGED STEEL W.T. DOOR. SILL 12" DOOR WORKABLE FROM BOTH SIDES.	STEEL CASING WITH 2 OPENINGS 5'-9" x 2'-0" FITTED WITH HINGED STEEL W.T. DOORS. SILLS 12" DOORS WORKABLE FROM BOTH SIDES.

Particulars of Ventilators in exposed positions on freeboard and superstructure decks:—

FOCLE DECK	FORO WELL	BRIDGE DECK	AFTER WELL	POOP DECK
2-8" C.V. to Fore. Coamings 36" x 30" 6-10" C.V. to Hold & 1st Deck. Coamings 36" x 32"	1-24" Derrick Post Vent (P&S) to Pump Room. 20'-0" High & 4'-0" Plating. Post stayed from Pump Room casing.	4-6" C.V. to Bridge (P) 3-6" C.V. to Coamings 30" x 30" 1-10" C.V. to Bridge (P&S) Coaming 30" x 32"	1-24" Derrick Post Vent (P&S) to Pump Room. 20'-0" High & 4'-0" Plating. Post stayed from Pump Room casing.	2-12" C.V. to Steering Gear. Coamings 30" x 34" 10 9" V. (P) & 2 9" V. (S) 6" x 4" 18" High. to H.C., Washplaces & Stores.

All vents in accordance with Rules & closed with steel W.T. Plugs; Lenses down mushroom tips or wood plugs & canvas covers.

Particulars of Air Pipes in exposed positions on freeboard, raised quarter, or superstructure decks:—

FOCLE DECK	FORO WELL	AFTER WELL	POOP DECK	BOAT DECK.
1-4" M.I. to Fore Peak 1-4" M.I. & 1-3" M.I. (P&S) to Deep Tank. 15" High. Air Pipes to Boffordams fitted with hinged blank flange. Air Pipes to Oil Tanks fitted with gauge, claustrum wood plugs.	1-4" M.I. (P&S) to Boffordams 2-3" M.I. to Lubricating Oil Tank. Air Pipes 8'-0" above deck & clipped to Fore Bldg.	1-3" M.I. (P&S) to Boffordams. 1-4" M.I. (P&S) to Oil Fuel Bunker. Air Pipes 8'-0" above deck & clipped to Poop front.	1-2 1/2" M.I. (P&S) & 1-3" M.I. (P&S) to Lub Oil Tank. 1-3 1/2" M.I. to After Peak Tank. 18" High.	2-3" M.I. (S) to Lub Oil Tank. 1-4" M.I. (P&S) to Double Bottom Oil Fuel Tank. 2-2" M.I. (P&S) to Boffordams in Double Bottom. 1-3" M.I. (P&S) to Double Bottom Lub Oil Tank. 1-4" M.I. (P&S) to Double Bottom Lub Oil Tank. Air Pipes 12" High.

Particulars of Gangway Cargo and Coaling Ports:—

None

Particulars of Scuppers and Sanitary Discharge Pipes:—

SANITARY DISCHARGES from H.C. & Washplaces in Poop Space carried through ship's side below freeboard deck & fitted with gun metal storm valves.
SANITARY DISCHARGES from H.C. & Washplaces in Bridge House carried through ship's side above freeboard deck & fitted with gun metal storm valves.
SCUPPERS from Poop Space. 2-2" Scuppers (P&S) from passageway & 1-2" Scupper at end of passage on Port side, carried through ship's side below freeboard deck, fitted with gun metal storm valve & having screw cap at inner end.
SCUPPERS from H.C. & Washplaces in Poop Space, carried through ship's side below freeboard deck & fitted with gun metal storm valve.
SCUPPERS from Steering Gear Space. 2-2" Scuppers, carried through ship's side below freeboard deck & fitted with gun metal storm valve.

Particulars of Side Scuttles:—

FOCLE. Sidelights 8" Dia.
BRIDGE Sidelights 8" Dia.
POOP Sidelights 10" Dia.

All sidelights of substantial construction & fitted with hinged deadlights.

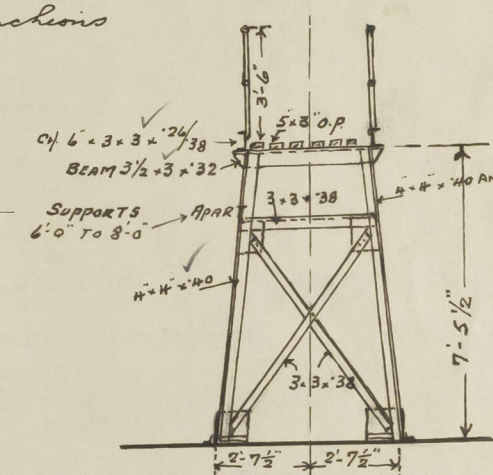
Vertical distance of Sill of lowest Side Scuttle above top of keel. No sidelights below freeboard deck.

Particulars of Guard Rails:—

FOCLE DECK, BRIDGE DECK & POOP DECK. Open rails 3'-6" high with 3 rods & stanchions spaced about 4'-6" apart.
FORO WELL & AFTER WELL. Open rail between bulwarks 3'-6" high with 3 rods & stanchions spaced about 4'-6" apart.

Particulars of Gangways, Lifelines, etc.:—

Gangway as per sketch from Poop to Bridge, & from Bridge to Fore.



Particulars of Freeing Arrangements.

	Length of Bulwark	Height of Bulwark	Size of Freeing Ports	Number each side	Area each side	Rule area each side
After Well { TOTAL LENGTH 155'-0" ... OPEN RAIL 77'-6" }	POOP FRONT 15'-6" BRIDGE END 62'-0"	3'-6"	3'-0" x 1'-6"	1	4'-0" f	OPEN RAIL 77'-6" ✓
Forward Well { TOTAL LENGTH 119'-8 1/2" ... OPEN RAIL 60'-2 1/2" }	BRIDGE FRONT 12'-0" FOCLE END 47'-6"	3'-6"	3'-0" x 1'-6"	1	4'-0" f	OPEN RAIL 60'-2 1/2" ✓

State position of each freeing port ... After Well:— POOP FRONT 1'-0" FROM BHP
BRIDGE END 1'-0" & 44'-0" FROM BHP
(F. and A. position and height above deck edge) Forward Well:— BRIDGE FRONT 1'-0" FROM BHP
FOCLE END 28'-0" FROM FOCL BHP.

State whether the freeing ports are fitted with shutters, bars, or rails, and give particulars of such:— 3 VERTICAL RODS 9" APART.

Additional area where sheer is less than standard. ✓

PARTICULARS OF PROTECTION TO OPENINGS, ETC.

HATCHWAYS ON FREEBOARD AND SUPERSTRUCTURE DECKS.													
FREEBOARD DECK.				SUPERSTRUCTURE DECKS									
Description of Hatchway	O.T. HATCHES 27 IN NO.	MANHOLES TO COFFERDAMS.	HATCH IN FOCLE TO STORE.	CARGO HATCH ON FOCLE DECK.	HATCH ON FOCLE TO STORE	HATCH ON POOP ON STAR SIDE				
Dimensions of Hatchway	4'-6" x 3'-6"	23" x 18"	2'-6" x 2'-6"	12'-0" x 12'-0"	2'-6" x 2'-6"	2'-9" x 2'-6"				
COAMINGS	{	Height above Deck	...	30"	CHANNEL	B. A. ✓	30" ✓	B. A.	16"				
		Thickness	Sides	...	40	COAMINGS	COAMING.	44	COAMING	34			
		Stiffeners	Ends	...	40	10 x 3 1/2 x 3 1/2, 40	6 x 3 x 3 1/4	44	6 x 3 x 3 1/4	34			
		Brackets, Stays	✓	✓	✓	7 x 3 x 3 1/2	✓	✓			
HATCH BEAMS	{	Number	...										
		Spacing	...										
FORE AND AFTERS	{	Scantling and Sketch	...										
		Bearing Surface	...										
		Number	...										
HATCH COVERS	{	Thickness	...	60 HINGED	40 STEEL	40 STEEL	40 HINGED	40 STEEL	40 STEEL				
		How fitted	...	STEEL O.T.	N.T. COVERS	N.T. COVER	N.T. COVER	N.T. COVER	N.T. COVER	N.T. COVER			
		Bearing Surface	...	COVERS	SECURED WITH TAP BOLTS 3 1/2 APART.	SECURED WITH TOGGLES 15 APART.	WITH 6 x 3 x 30 AND STIFFENERS 28" APART	SECURED WITH TOGGLES 15 APART.	SECURED WITH TOGGLES 15 APART.				
		Spacing of Cleats	...	✓	✓	✓	✓	✓	✓				
Number of Tarpaulins	✓	✓	✓	✓	✓	✓				
*Are wood fore and afters steel shod at all bearing surfaces?				✓									
Are battens and wedges efficient and in good condition?				✓									
Are tarpaulins in good condition and in accordance with rule requirements?				✓									
Are lashings provided in accordance with rule requirements?				✓									

Particulars of any special features:—

This vessel is an oil tanker & has been built in accordance with the approved Plans of Lidskip Section & Profile & Decks forwarded herewith for reference.

Endorsement at first survey and at surveys for renewal of Certificate:—

The fittings and appliances are in accordance with the particulars shown on this form (or as now modified) and are in good condition.

