

# S.S. TANKER No 29. STERNFRAME & RUDDER. SCALES 1/2" & 1 1/2" = 1 FOOT.

SPEED OF VESSEL UNDER 12 KNOTS

AREA OF RUDDER = 165 SQ. FEET

CENTRE OF GRAVITY = 3.92 FEET

A x D = 165 x 3.92 = 647

DIA OF RUDDER STOCK = 1 1/2"

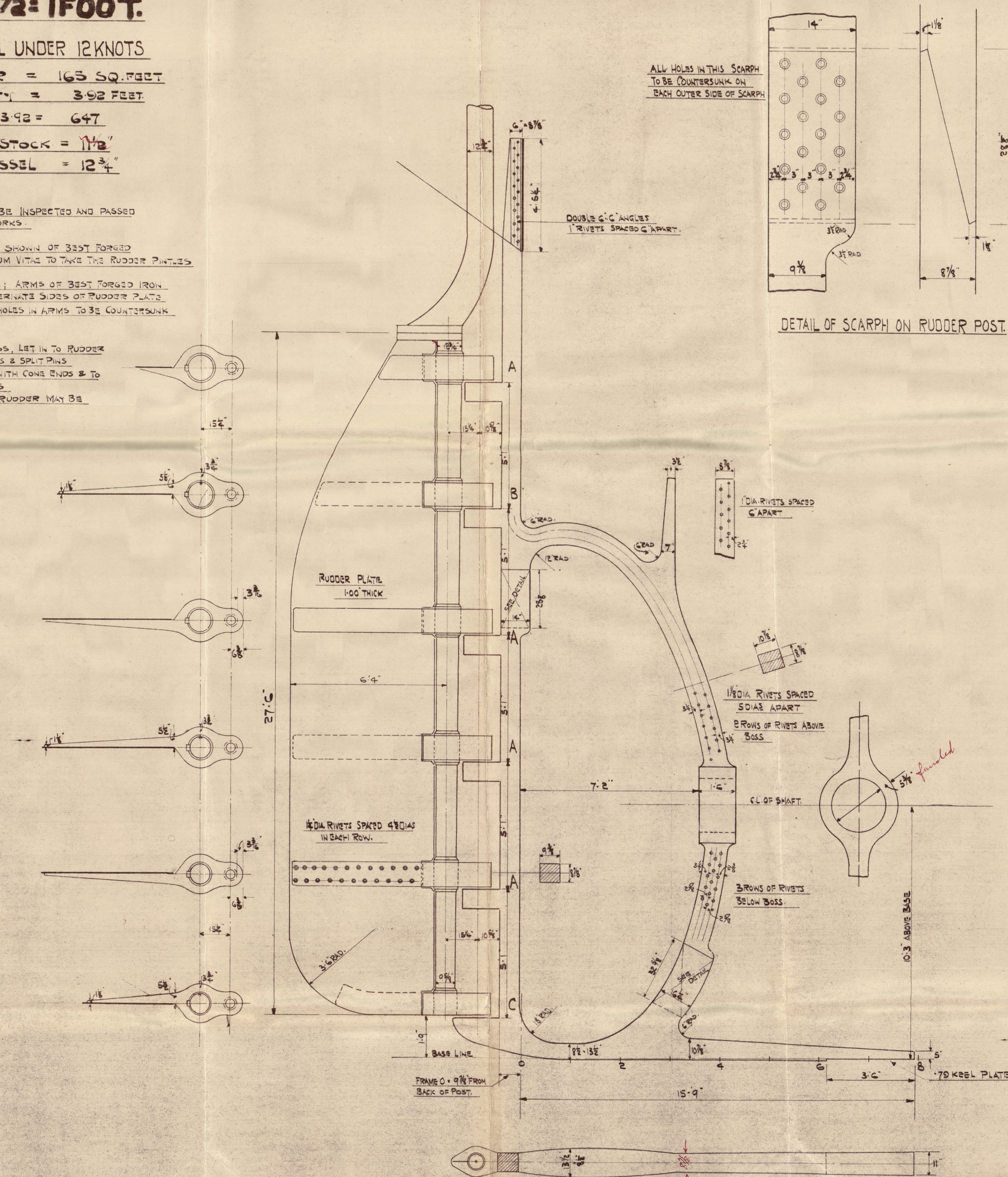
+ 10% FOR OIL VESSEL = 12 3/4"

ALL TO BE MADE TO LLOYDS REQUIREMENTS AND TO BE INSPECTED AND PASSED BY THEIR SURVEYOR BEFORE LEAVING THE MAKERS WORKS.

STERNFRAME TO BE IN TWO PARTS SCARPHED WHERE SHOWN OF BEST FORGED STEEL AND WITH SOLID GUDGEONS BUSHED WITH LIGNUM VITAE TO TAKE THE RUDDER PINTLES.

RUDDER STOCK & MAIN PIECE OF BEST FORGED STEEL; ARMS OF BEST FORGED IRON SHUNK ON & KEYED TO STOCK. ARMS FITTED ON ALTERNATE SIDES OF RUDDER PLATE ARMS TO SUIT GUDGEONS ON STERNFRAME. RIVET HOLDS IN ARMS TO BE COUNTERSUNK ON OUTER SIDE OF ARMS.

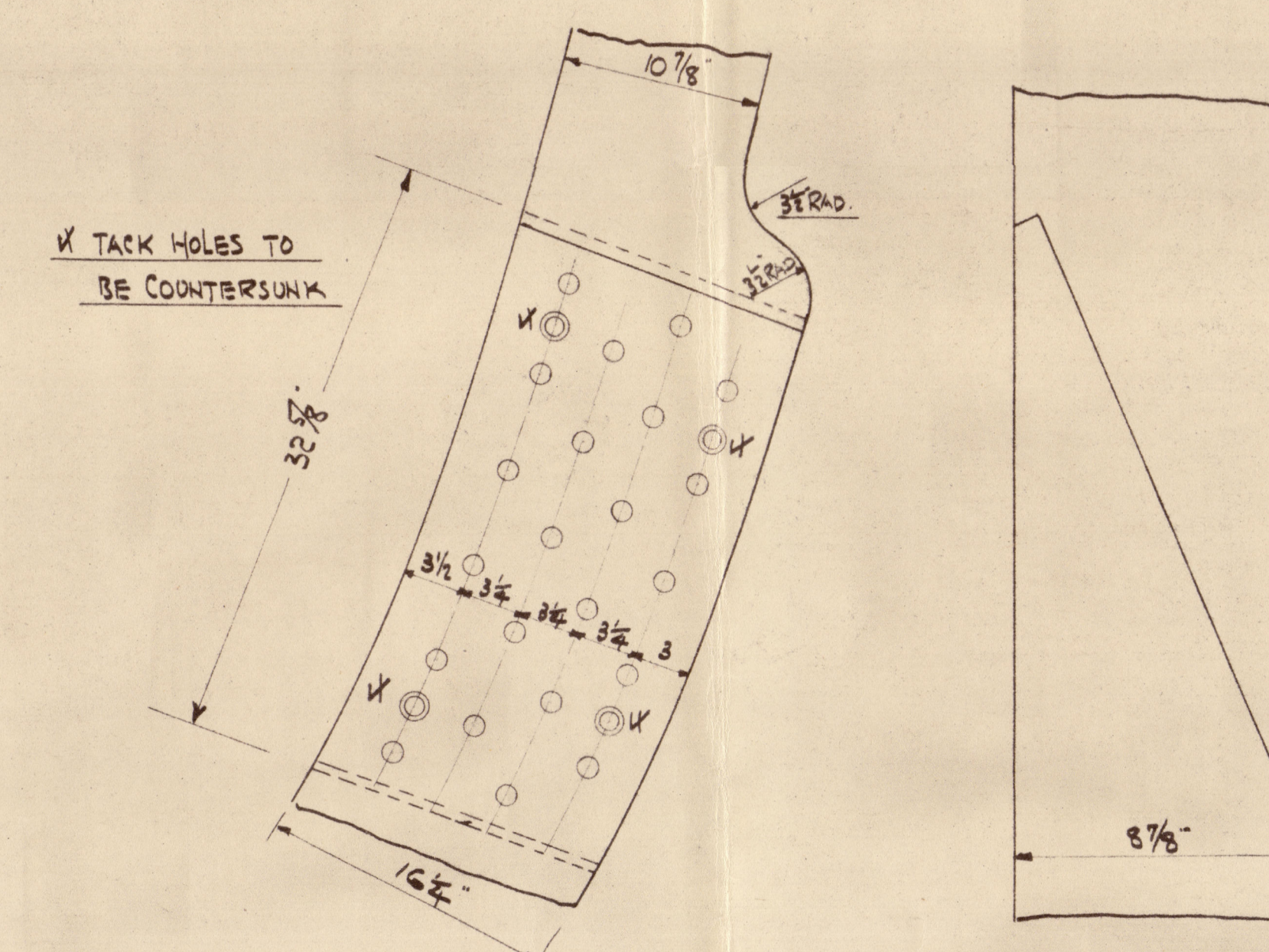
STEEL PINTLES TO BE PORTABLE, SHEATHED WITH BRASS, LET IN TO RUDDER ARMS WITH A TAPER & SECURED ON TOP WITH RIVETS & SPLIT PINS TO BE SELF CENTRING (EXCEPTING LOCKING PINTLE) WITH CONE ENDS & TO BEAR ON HARD STEEL WASHERS FITTED IN GUDGEONS. COUPLING TO BE SO ARRANGED THAT LOWER PART OF RUDDER MAY BE UNSHIPPIED WITHOUT REMOVING UPPER STOCK.



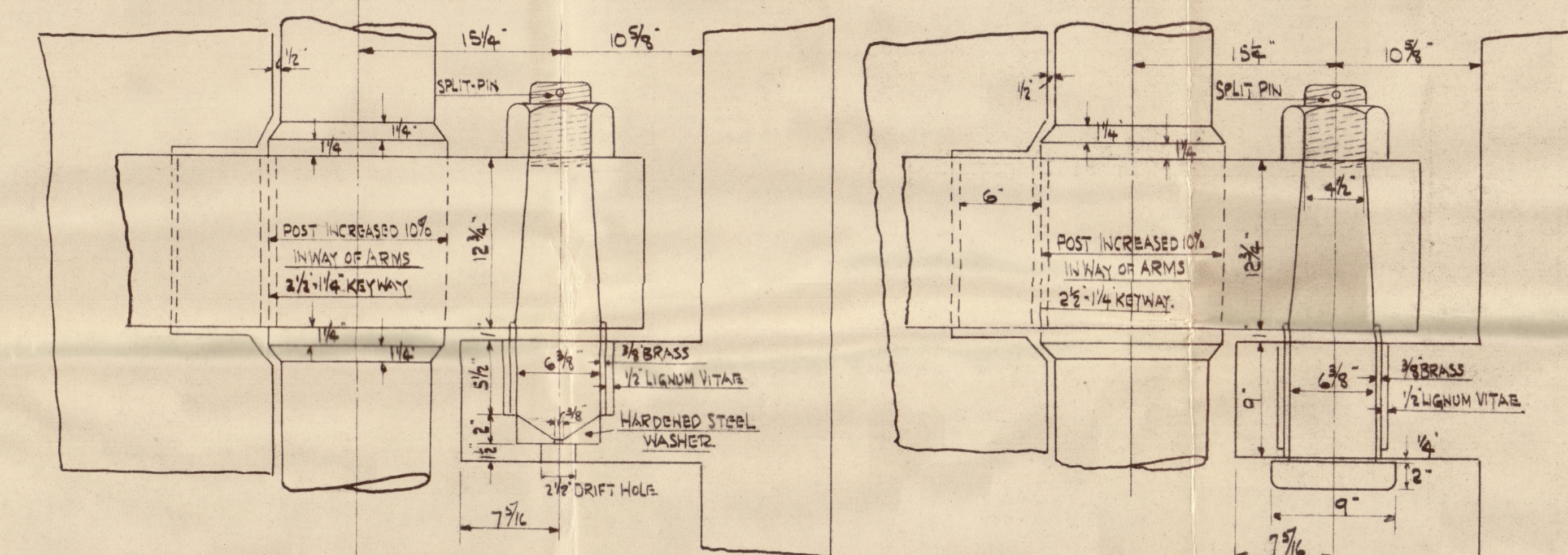
ALL HOLDS WITHIN SCARPH TO BE COUNTERSUNK ON BACK OUTER SIDE OF SCARPH

DOUBLE G.C. ANGLES  
RIVETS SPACED 6\"/>

DETAIL OF SCARPH ON RUDDER POST.

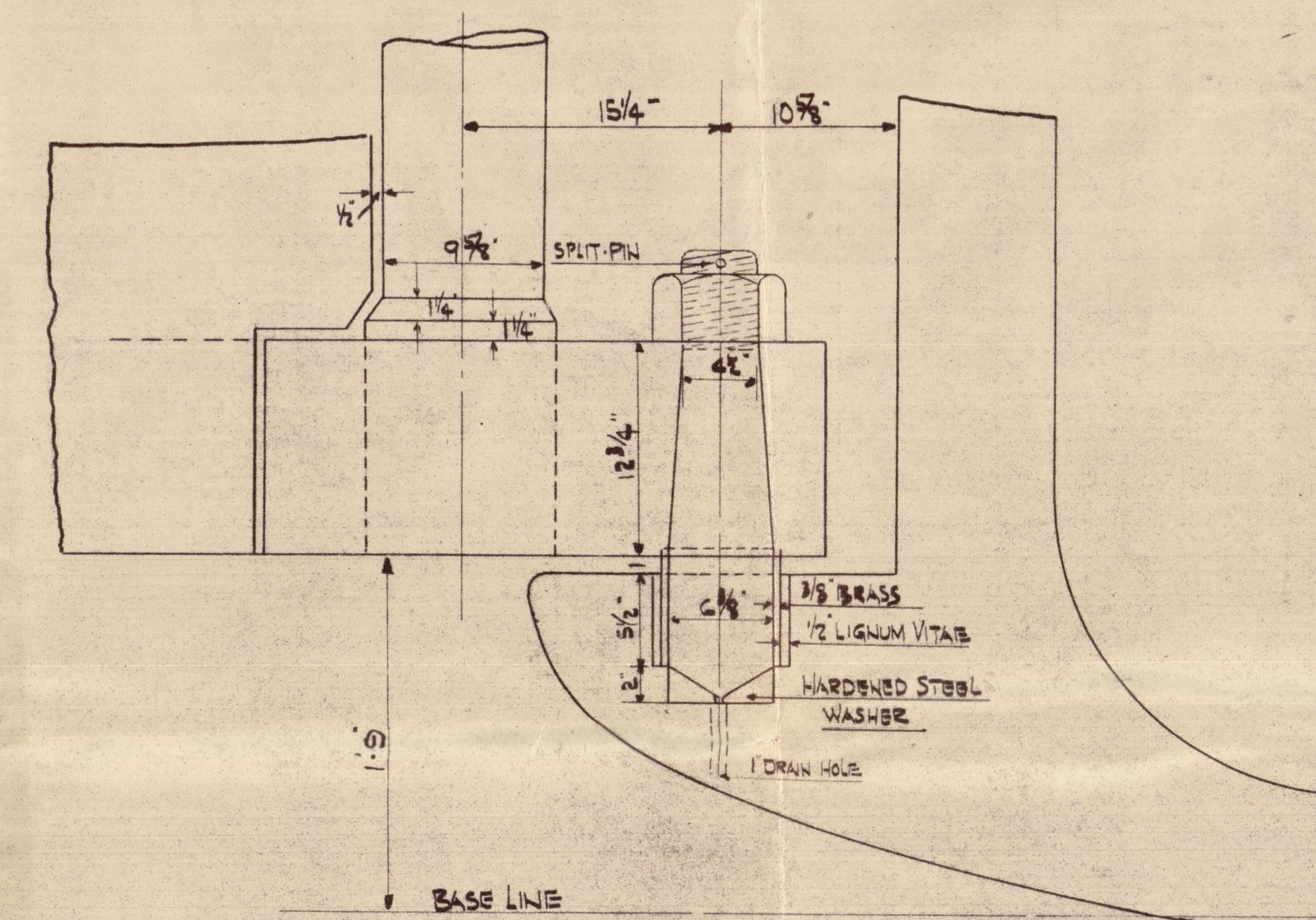


DETAIL OF SCARPH  
ON STERNPOST.

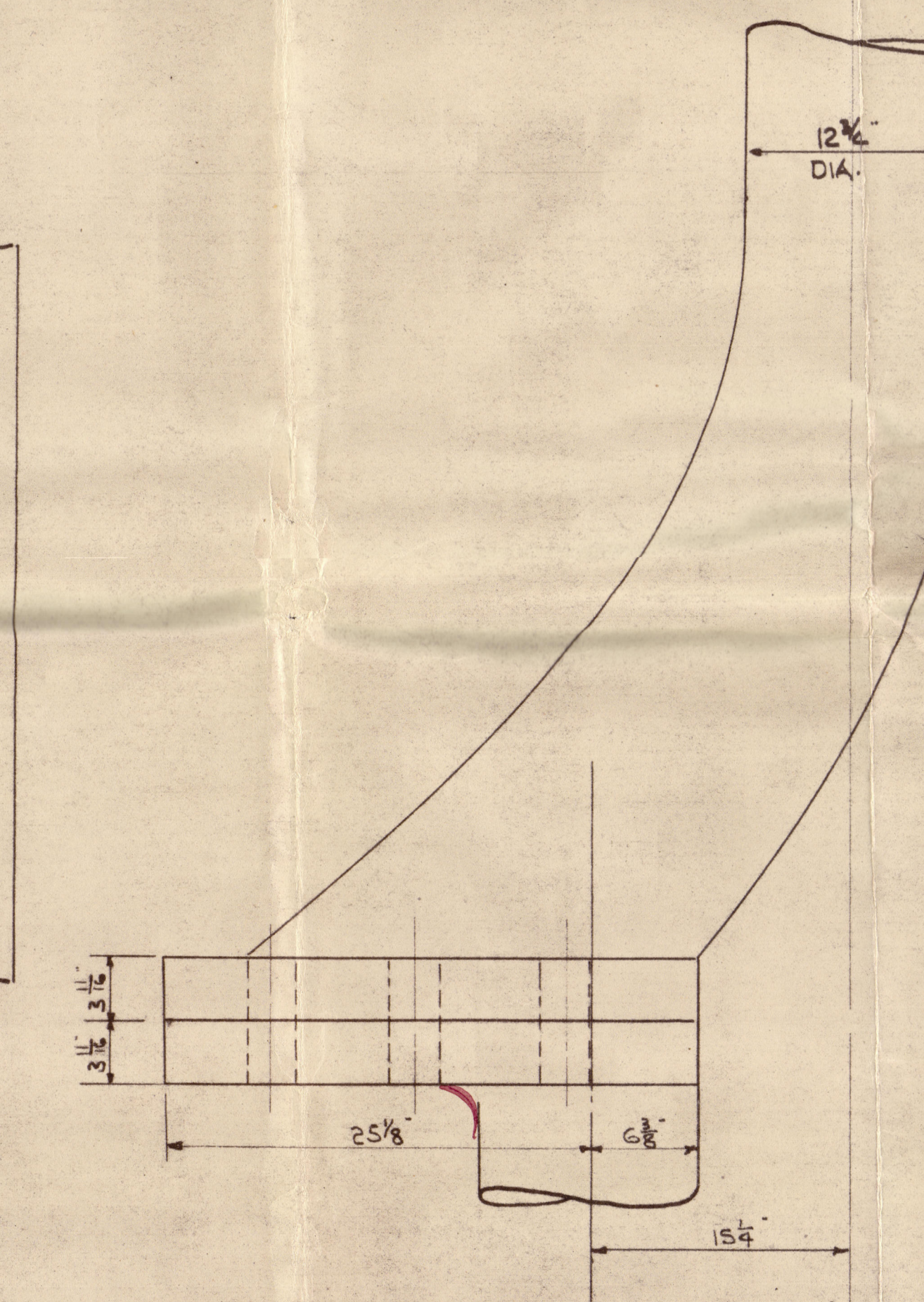


DETAIL OF PINTLES MARKED "A"

DETAIL OF LOCKING PINTLE "B"



DETAIL OF BOTTOM PINTLE "C"



DETAIL OF COUPLING

APPROVED  
LLOYDS REGISTER OF SHIPPING  
H. J. Dine  
DATE 6/12/29



Blythwood S. B. Co. Ltd.

No. 29.

Sternframe + Rudder.

M.V. "El Mirlo."

GLASGOW REPORT No 50840



© 2020

Lloyd's Register  
Foundation

002798-002807-0221