

# Nº 345. PROFILE AND DECKS.

SCALE  $\frac{1}{8}" = 1 \text{ FOOT.}$

DIMS 230'-0" B.P. x 42'-0" M.P. x 17'-0" (2<sup>nd</sup> DECK) 25'-6" (UPPER DECK)

TO CLASS LLOYDS 100 A.I. WITH FREEBOARD corresponding to a strength not exceeding that contemplated by the Rules for a complete hull structure vessel having a tonnage of 1000 tons.

SEE APPROVED PLAN.

AFT DEEP TANK BULKHEAD



CRANES, WINDLASS, WINCHES, AND STEERING GEAR SUPPORTED TO SURVEYORS SATISFACTION

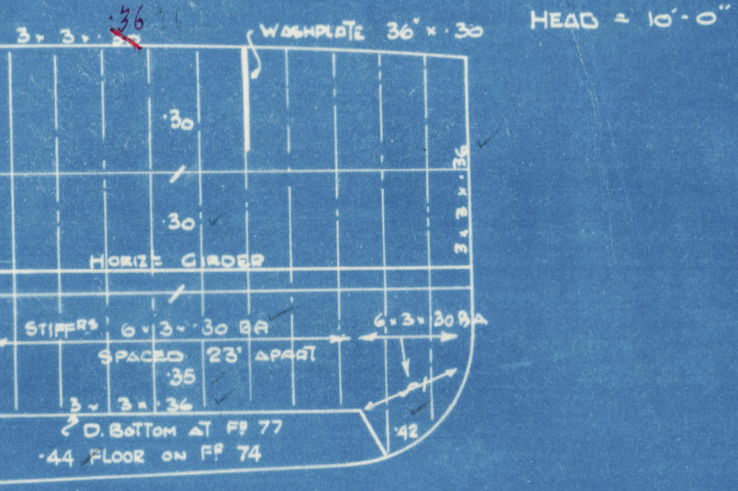
*Detail plan of pillars and girders to be submitted*

*The requirements of Sect. 60 A of the Rules for Vegetable Oil to be complied with*

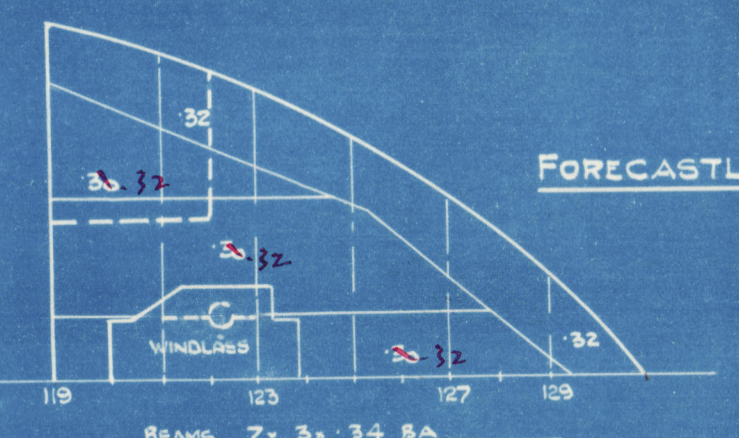
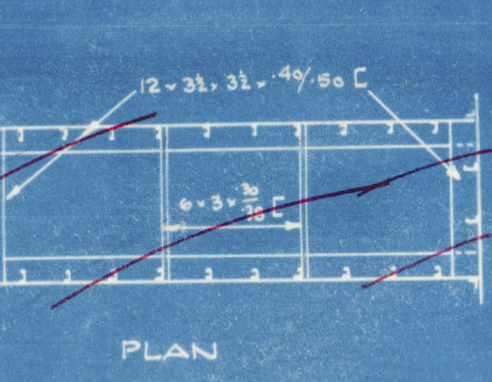
*Detail Plan of horizontal girders in deep tanks to be submitted*

SEE APPROVED PLAN OF DEEP TANKS.

FOR DEEP TANK BULKHEAD



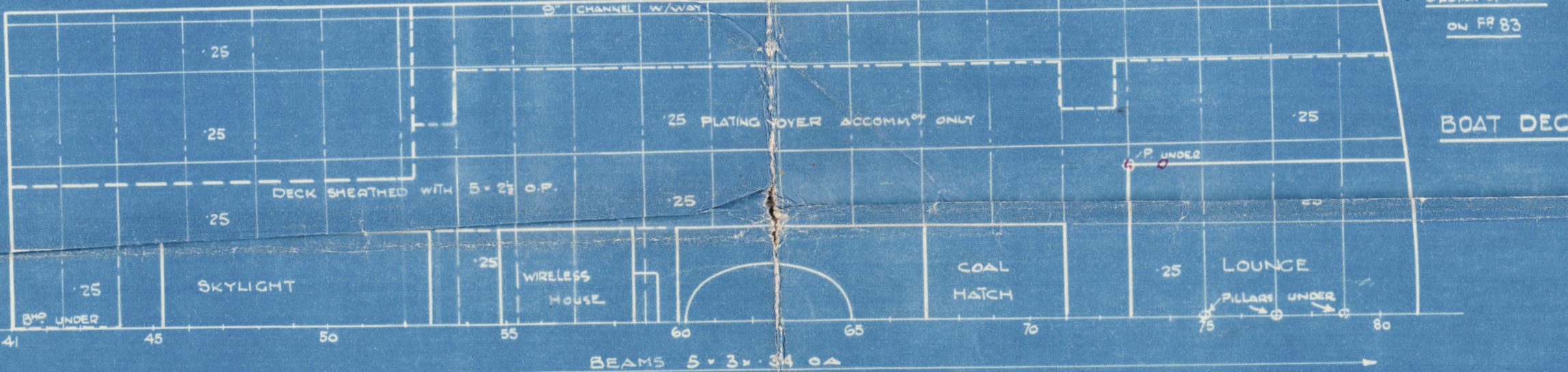
BULKHEAD 74 & 77



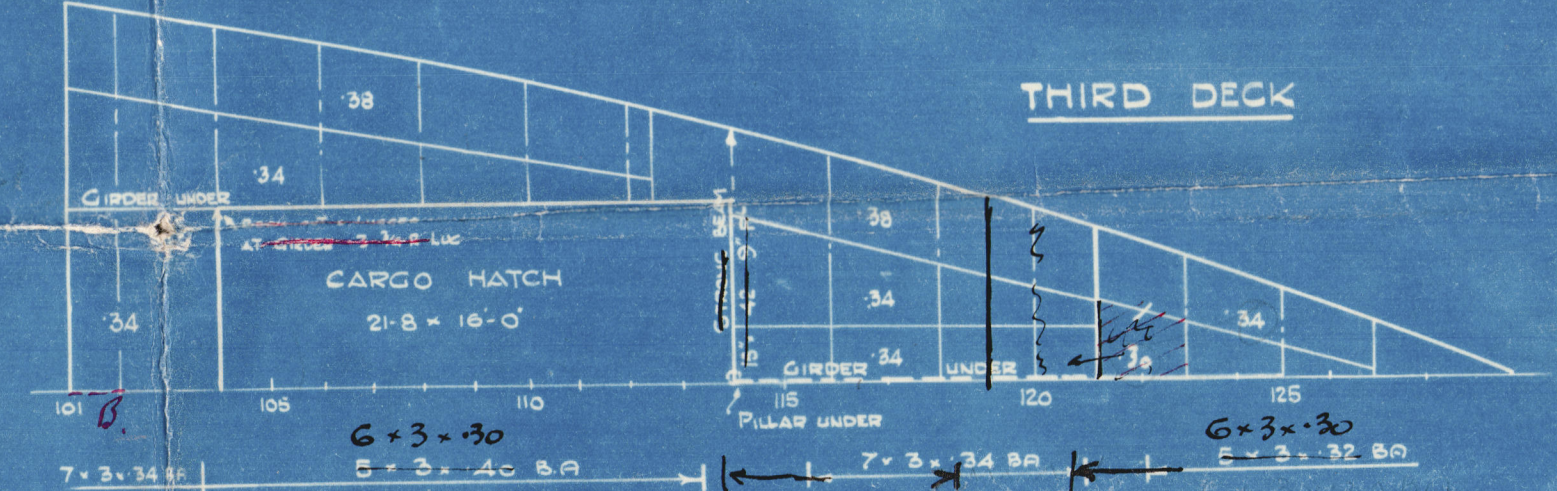
*Open not to exceed 11'-0" supports to surveyors satisfaction*



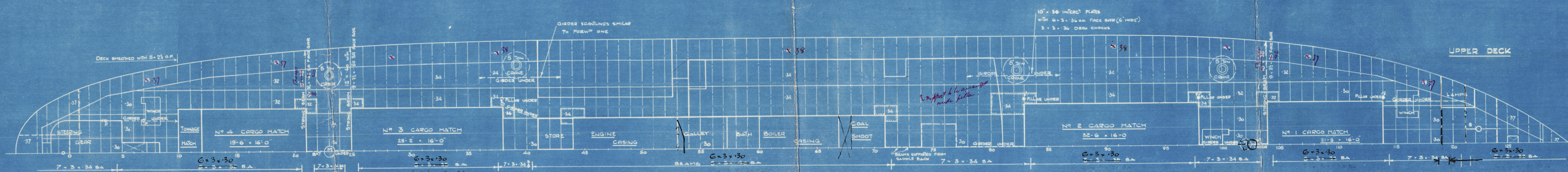
SECTION A-A



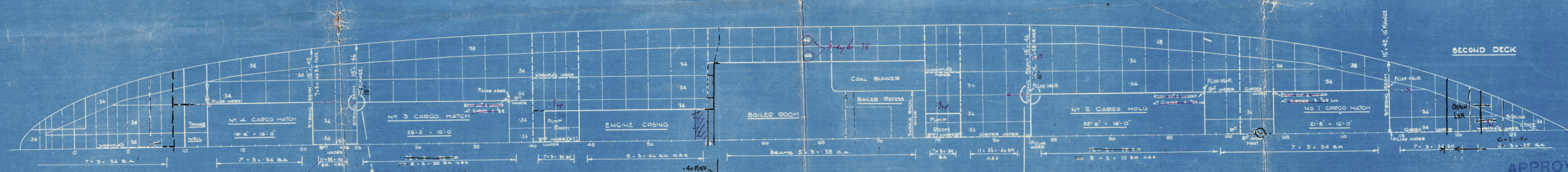
BOAT DECK



THIRD DECK



UPPER DECK



SECOND DECK

APPROVED  
LLOYDS REGISTER OF SHIPPING  
H. Dickson, per A. Allen.  
DATE 30/5/13



Caledon No 345.

Profile & Decks.

**S.S. "DUNDEE"**

N/N DOTTEREL



© 2020

Lloyd's Register  
Foundation

002809-002815-0052