

MIDSHIP SECTION THRO' OIL DRUM

& SECTIONS THRO' EXPANSION TRUNKS

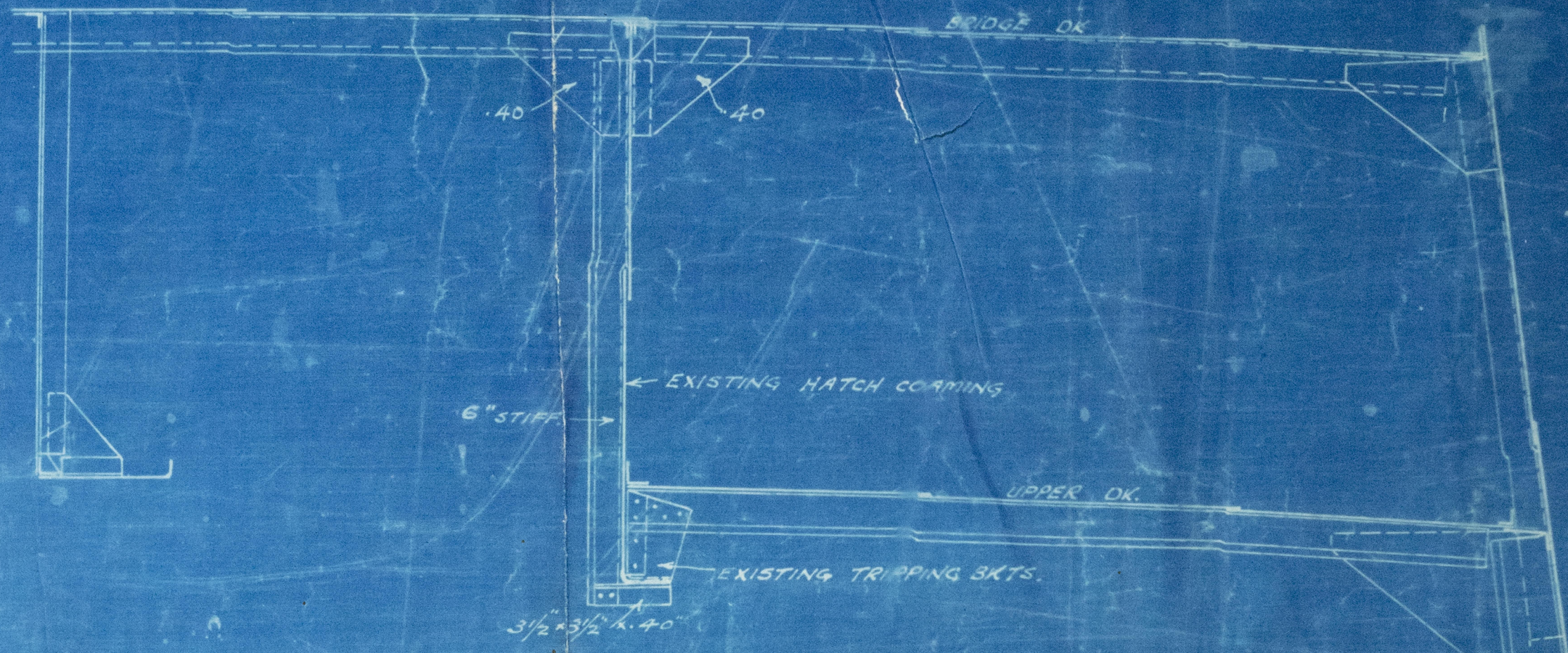
S.S. No 334

RULE DIMS. 330' 2" x 47' 8" M.L.D. x 24' 66" M.L.D. TO UPPER DK. 330' 1" ON L.N.L.
TO CLASS 100 A1. FITTED WITH OIL TANKS FOR CARRYING PETROLEUM.
SCALE 1/2" = 1 FOOT.

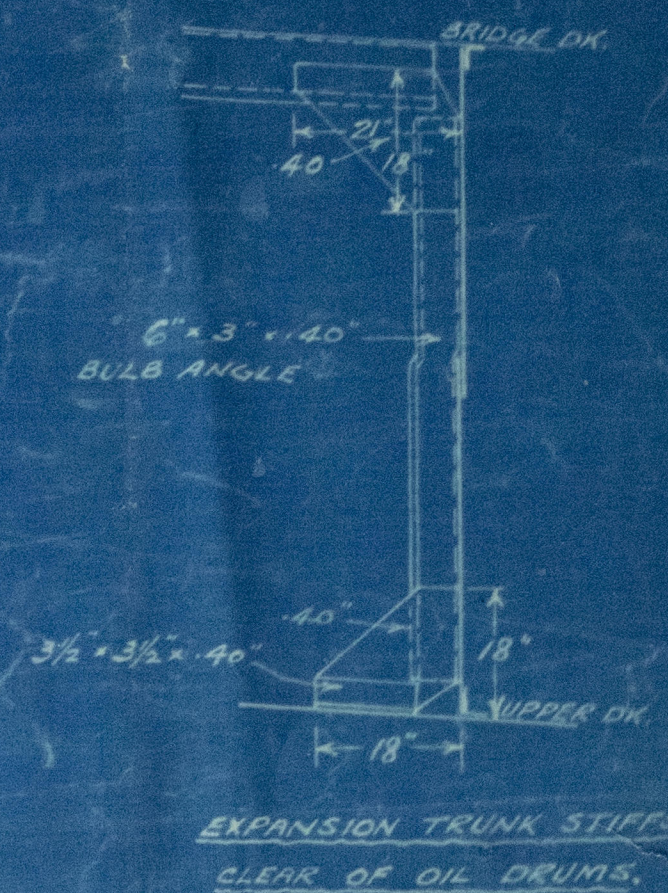
RIVETING NOTE

KEEL BUTTS QUADRUPLE TO TREBLE
BRIDGE SHEERSTRAKE BUTTS QUADRUPLE
UPPER DK. POOP & FILE SIDE DOUBLE
4" GIRDERS TREBLE
MARGIN TANK C/S STRAKE DOUBLE
TOP TREBLE & DOUBLE
UPPER DK. STRINGER TREBLE & DOUBLE
PLATING DOUBLE & SINGLE
BRIDGE STRINGER TREBLE
PLATING DOUBLE
BOSS PLATE QUADRUPLE
STRAKE BELOW BRIDGE DK. SHEERSTRAKE BUTTS QUADRUPLE
UPPER SIDE SHELL QUADRUPLE TO TREBLE
BOTT. SHELL

RIVETS THRO' SHELL 3/4" DIA.
KEEL 1" 3/4" UNDER 69
FRAMES TO SHELL SPACED 5 1/2" DIA. CR. & CR. IN PEAKS
MULTIPLE SPACED 5 1/2" DIA.
REVERSED TANK TOP 6
BEAMS 6" PLATING 6



SECTION THRO' EXPANSION TRUNK IN WAY OF EXISTING HATCHWAYS



EXPANSION TRUNK STIFFS CLEAR OF OIL DRUMS

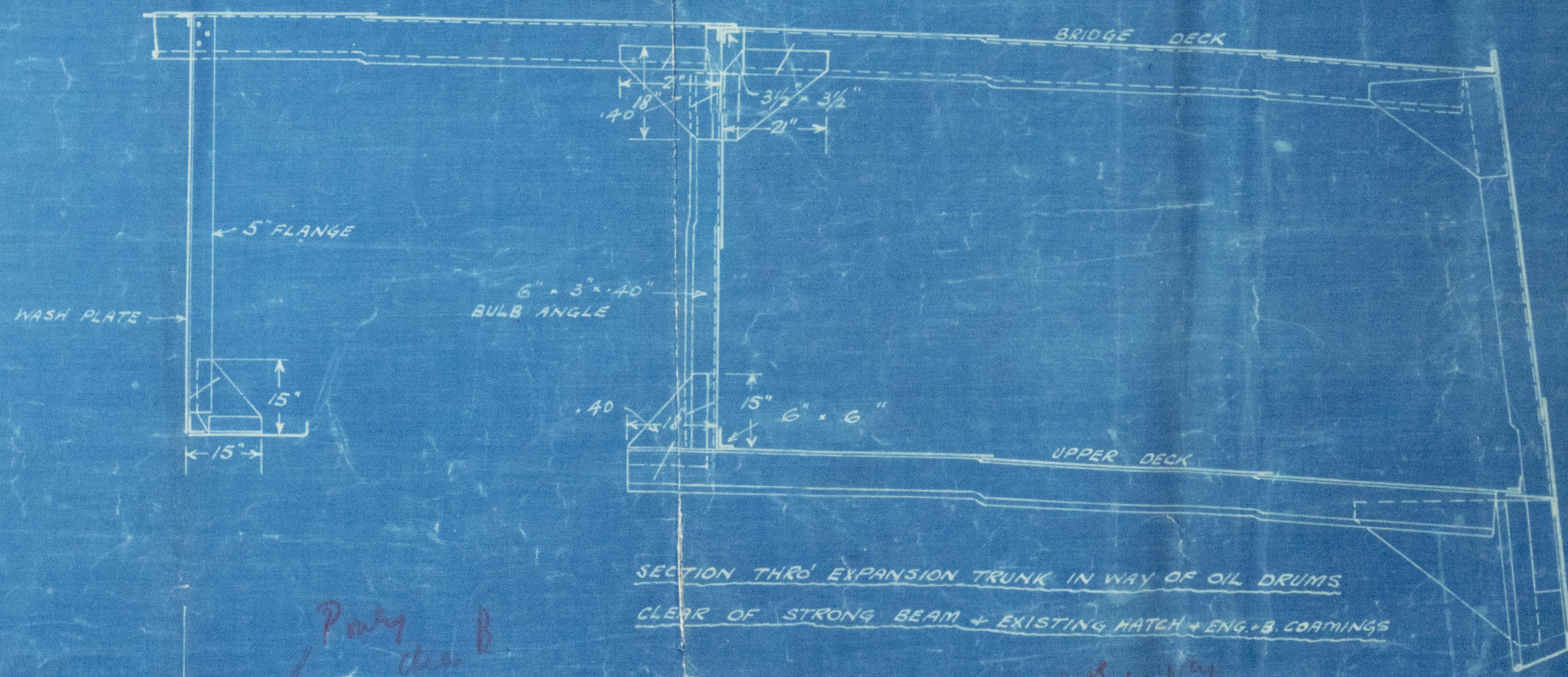
LENGTH NO	EQUIPMENT NUMERAL
POOP 23.42	23932.8
BRIDGE 96.25	
FILE 38.0	
137.67 = 7.75	827.7
SALOON HOUSE 13.7 x 5	66.5
CASINGS & EXPANSION TRUNK 172.375	909.96
	25732.06

EQUIPMENT

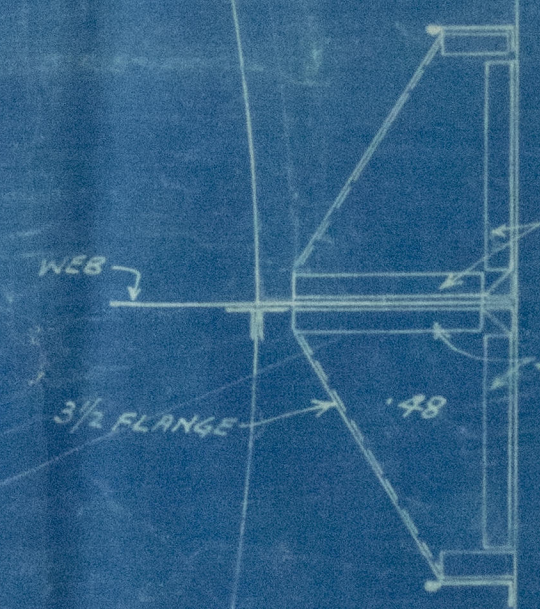
2 BOWERS STOCKLESS 4.5 CWT
1 " " " 50/4
1 STREAM EX STOCK 12
1 KEDGE 5 1/2
235 FINE STUD CHAIN CABLE
90 " 1/2" STEEL WIRE STREAM
120 " 4" TONLINE
2 @ 90 " 2 1/2" HAWSER FOR OWNERS
2 @ 90 " 2 1/2" WARP SPECIFICATION

FABRICATING AND CASTINGS

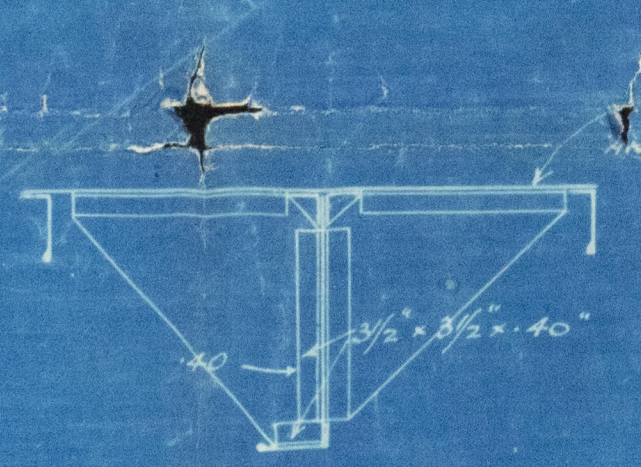
STEM 8 1/2" x 2 1/2" ROLLED STEEL
PROPELLER POST 8 1/2" x 6 1/2" CAST STEEL
RUDDER 1 1/2" x 8 1/2"
TRANSOM FLOOR 38" x 8 1/2"



SECTION THRO' EXPANSION TRUNK IN WAY OF OIL DRUMS
CLEAR OF STRONG BEAM & EXISTING HATCH & ENG. G. COAMINGS

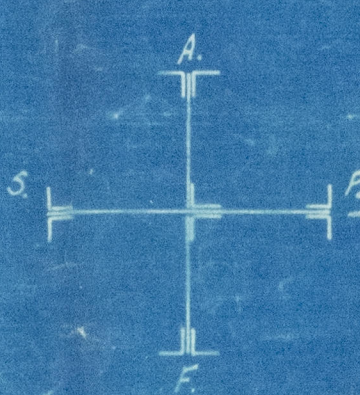


BATS TO BND
FR 35



SECTION THRO' STRONG BEAM
SHEARING TRIPPING BKT.

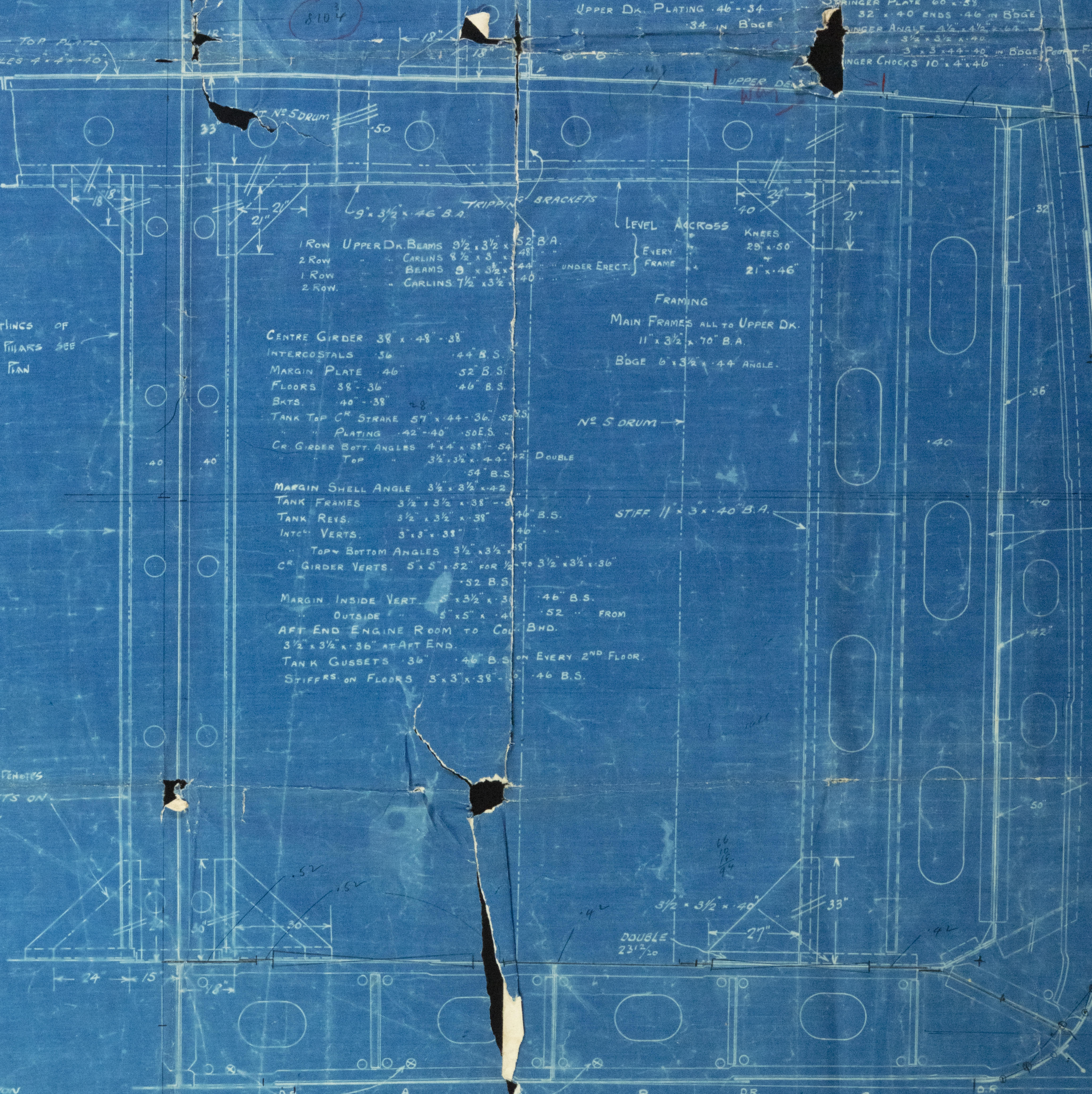
FOR SCANTLING OF
WEBB AND MARKS SEE
SEPARATE PLAN



ELEVATION OF INT. GIRDERS



BKTS ON O.T. FLOORS
EXISTING & NEW FLOORS



CENTRE GIRDER 38" x 48" - 38
INTERCOSTALS 36 44 B.S.
MARGIN PLATE 46 52 B.S.
FLOORS 38" - 36 46 B.S.
BATS 40" - 38 46 B.S.
TANK TOP C/S STRAKE 67" x 44" - 36 52 B.S.
PLATING 42" - 40 52 B.S.
C/S GIRDER BUTT ANGLES 4 1/4" x 8 1/2" - 50
TOP 3 1/2" x 3 1/2" x 40 52 B.S.
MARGIN SHELL ANGLE 3 1/2" x 3 1/2" x 40 52 B.S.
TANK FRAMES 3 1/2" x 3 1/2" x 38 44 B.S.
TANK REYS 3 1/2" x 3 1/2" x 38 44 B.S.
INT. VERTS. 3 1/2" x 3 1/2" 44 B.S.
TOP & BOTTOM ANGLES 3 1/2" x 3 1/2" x 40 52 B.S.
C/S GIRDER VERTS. 5 1/2" x 5 1/2" x 40 52 B.S.
MARGIN INSIDE VERT. 5 1/2" x 3 1/2" x 40 52 B.S.
OUTSIDE 5 1/2" x 3 1/2" x 40 52 B.S.
AFT END ENGINE ROOM TO CO. BND.
3 1/2" x 3 1/2" x 38" AT AFT END.
TANK GUSSETS 36 46 B.S.
STIFFS ON FLOORS 3 1/2" x 3 1/2" x 40 52 B.S.

LEVEL ACROSS
EVERY FRAME
KNEES 20" x 50"
21" x 46"

FRAMING
MAIN FRAMES ALL TO UPPER DK.
11" x 3 1/2" x 70" B.A.
BDR 5 1/2" x 4 1/2" ANGLE.

STIFF 11" x 3 1/2" x 40 B.A.

DOUBLE 23" x 50

3 1/2" x 3 1/2" x 40

DOUBLE 23" x 50

3 1/2" x 3 1/2" x 40

DOUBLE 23" x 50

3 1/2" x 3 1/2" x 40

DOUBLE 23" x 50

3 1/2" x 3 1/2" x 40

DOUBLE 23" x 50

3 1/2" x 3 1/2" x 40

DOUBLE 23" x 50

3 1/2" x 3 1/2" x 40

H 32" IN WELLS TO 42"
62" BRIDGE
112" AT ENDS OF BRIDGE

G 72" - 42" IN
WAY OF WELLS

E, F & G STRAKES
62" - 42" SIDE OF
OIL DRUM

WEB ANGLES STOPPED
AT DRUM LANDINGS
IN WAY OF W.T. BND

TANK TOP
44"

8" x 5" x 50" SINGLE

8" x 5" x 50" SINGLE

8" x 5" x 50" SINGLE

8" x 5" x 50" SINGLE

N. BND. FR. 51-67
LOOKING AFT

SECTION THRO' CR. OIL DRUMS SHEWING WEBS AT SIDE ON FR. 35 & 33.

RIVETS THRO' TANK TOP 3 1/2" x 7" APART
MADE 3/8"

CLOSING PLATES MADE C.T.

RIVETS THRO' SHELL 3 1/2" x 7" APART
MADE 3/8" ONLY

RIVETS THRO' FLOOR 6 1/2" APART. RIVET ADDED BETWEEN
EXISTING ONES

SECTION THRO' FITTING FLOORS TO BE THRO' OIL TANK

002830-002831-0002



data

Midship Section (as fitted).

Messrs R. Duncan & Co. Ltd.

S. S. No 334

8/5 Goben

GREENOCK Report No 17786

Plays.

002830- 002837- 0002



© 2021

Lloyd's Register
Foundation