

025

RUDDER PLAN.

DETAIL OF
RUDDER HEAD

7/8" DIA. RIVETS SPACED 5 DIAM^s APART

n°	ORDS	Σ M	FUNCTION = OR & A	ORDS	Σ M	FUNCTION = OR & A
1	1 16		1 16	1 34		1 34
2	3 37	4	3 48	11 35	4	45 40
3	4 08	2	8 16	16 64	2	33 28
4	4 16	4	16 64	17 30	4	69 20
5	4 00	2	8 00	16 00	2	32 00
6	3 37	4	3 48	11 35	4	45 40
7	66	1	66	23	1	23
			61 58			227 45

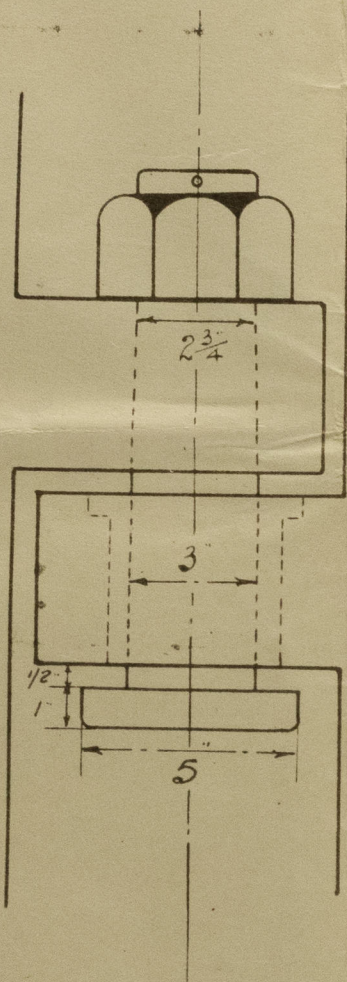
$$\text{AREA} = \frac{61.58 \times 2.08}{2} = 42.70$$

$$C.G. = \frac{227.05}{61.58 \times 2} = 1.84$$

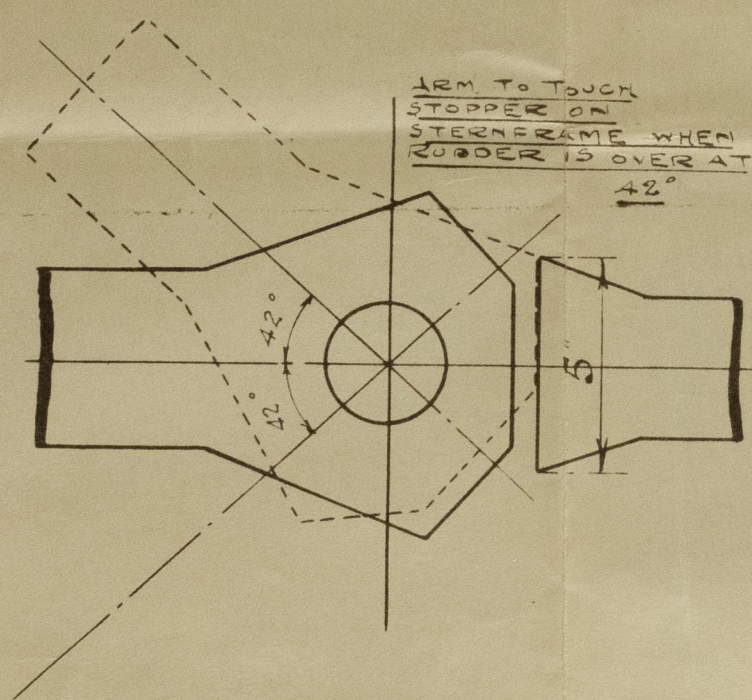
$$D = 1.84 + .34 = \underline{2.18}$$

$$A \times D = 42.70 \times 2.18 = \underline{\underline{93.08}}$$

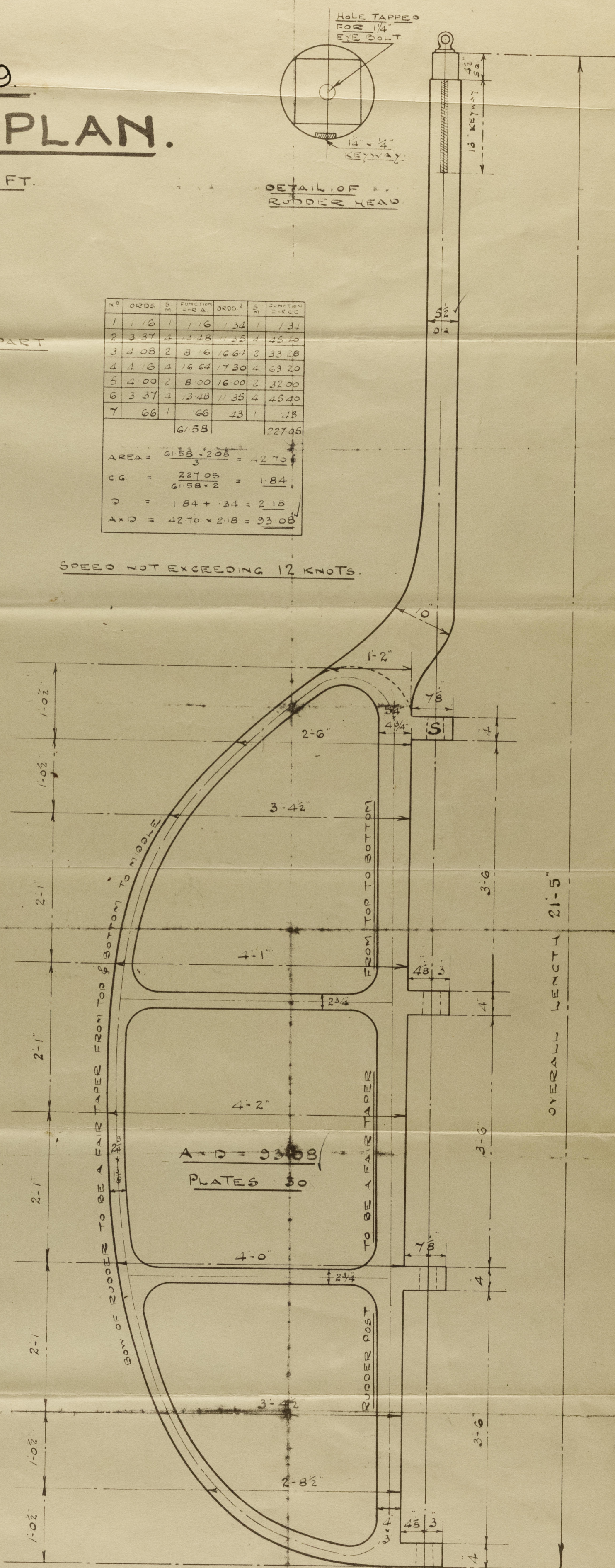
SPEED NOT EXCEEDING 12 KNOTS



DETAIL OF PINTLE
IN TOP GUDGEON
SCALE 3" = 1 FT.



DETAIL OF STOPPER
ON TOP GUDGEON.
SCALE 3 = 1 FT.



PLAN No. 4501
FOR ENCLOSURE TO
Messrs Lloyds Refl.
Hull FROM
COCHRANE & SON LTD
SUPERINTENDENTS SECT.
DATE 16-7-30

NOTE :- THE UPPER & LOWER SURFACES OF GUGGONS TO BE SQUARE TO POST & DEAD LEVEL SO THAT WATER TIGHTS WILL BEAR TRUE ON SAME

Messrs. Lloyds

No. 1099

Rudder Plan

Cochranes Sons & Co.

S.S. "Lord Beaverbrook"

HULL RECORD

41516



© 2020

Lloyd's Register
Foundation

002838-002845-0132