

SHIP No 404 MIDSHIP SECTION.

To CLASS 100 A.I. WITH FREEBOARD CORRESPONDING TO A.F.S. VESSEL WITH 63' SUPERSTRUCTURES

DIMENSIONS: LENGTH B.P. 265'0" BREADTH M.L. 43'0" DEPTH M.L. TO UPPER DECK 19'6"

SCALE: 1/2" = 1'0"

LLOYD'S NUMERALS

L	265'0"
B	43'0"
D	19'6"
L+D	51'6"
Lx(B+D)	16562
LD	13'59"
d in HOLD	16'60"
d in E.R.	13'5"

NUMERALS FOR EQUIPMENT

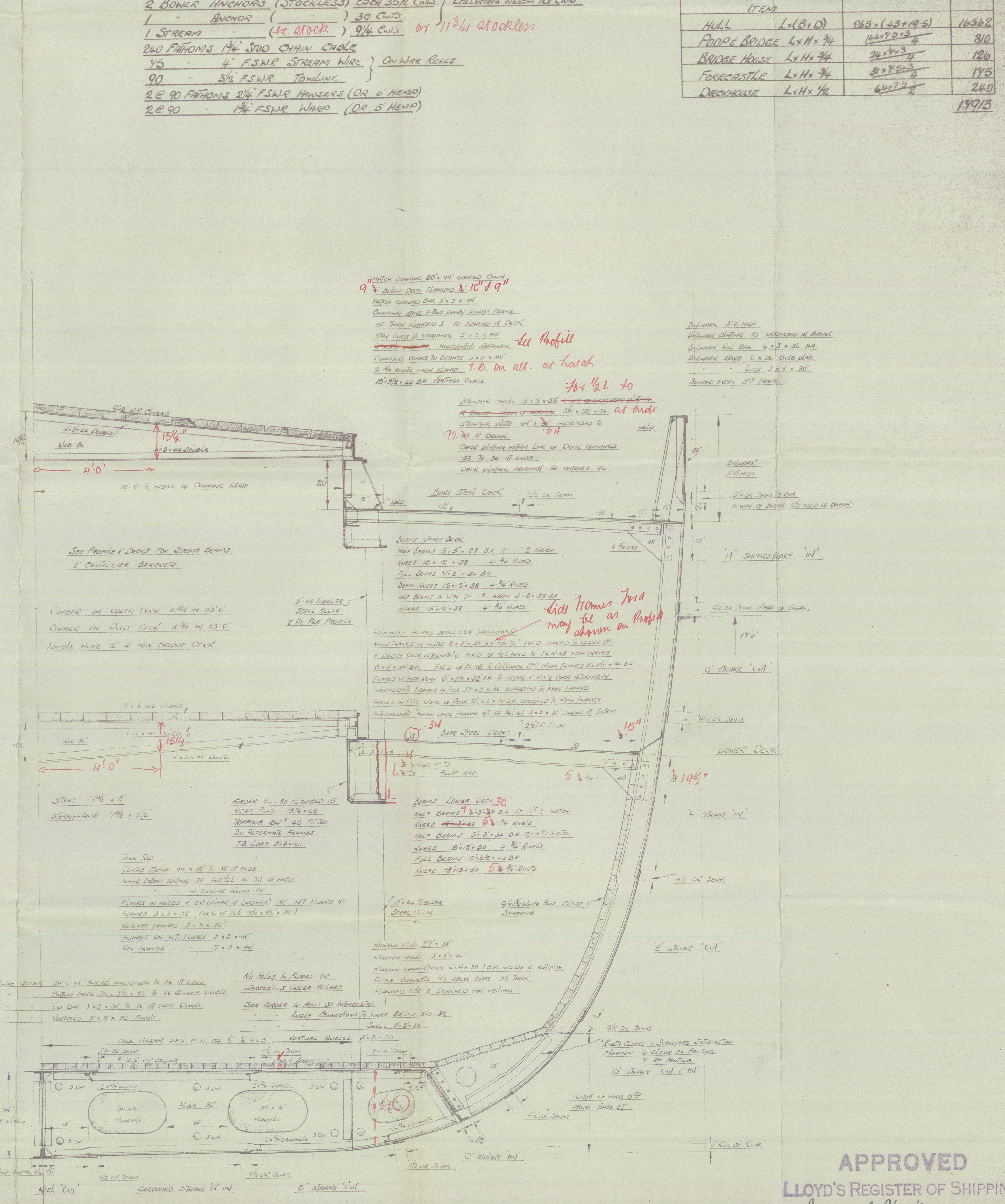
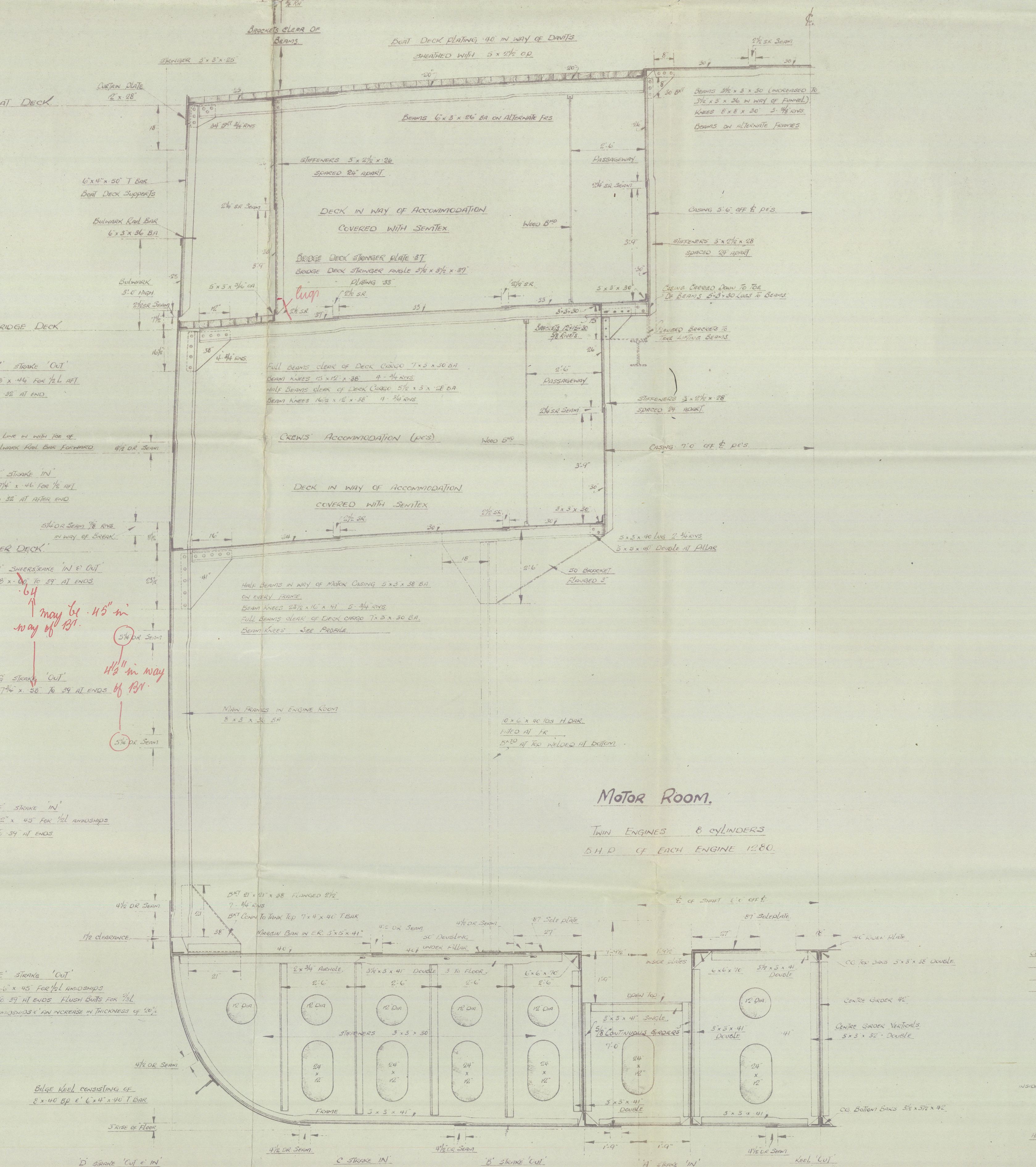
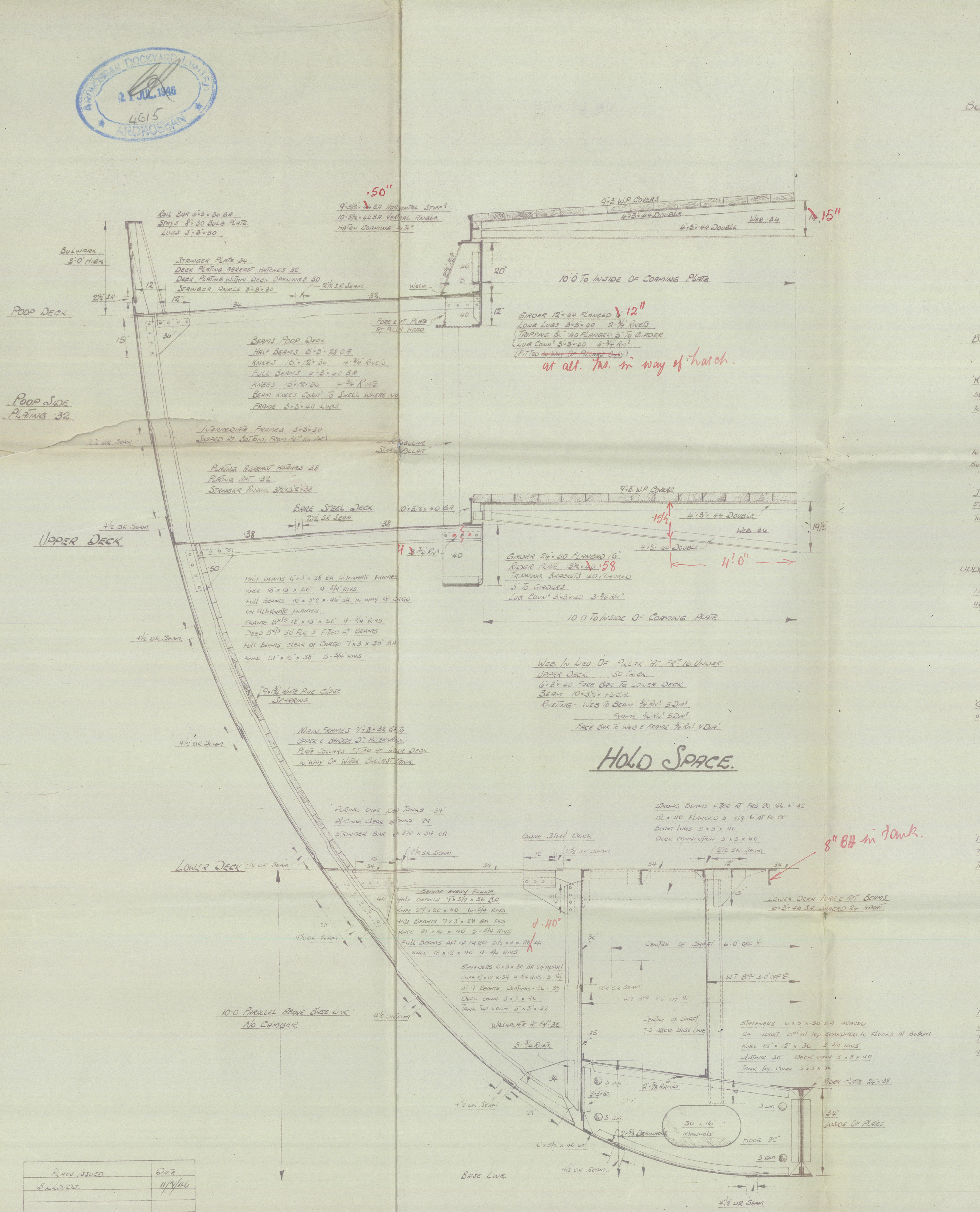
ITEM			
HULL	Lx(B+D)	265'0" x 51'6"	16562
POPE BRIDGE	LxHxW	16'0" x 7'4" x 3'	810
BRIDGE HOUSE	LxHxW	24'0" x 7'4" x 3'	180
FORECASTLE	LxHxW	24'0" x 7'4" x 3'	180
DECKHOUSE	LxHxW	6'0" x 7'4" x 3'	240
			19913

EQUIPMENT (LETTER P)

- 2 BOWER ANCHORS (STOCKLESS) EACH 3500 LBS
- 1 ANCHOR (STOCKLESS) 3500 LBS
- 1 SPARE ANCHOR (STOCKLESS) 3500 LBS
- 200 FATHOMS 1/4" 5000 CHAIN CHAINS
- 25 4" FSWR STAYING WIRE ON WIRE ROLES
- 90 3/4" FSWR TONNINGS
- 2 & 90 FATHOMS 3/4" FSWR HAWSES (ON 6 HAWSES)
- 2 & 90 1/4" FSWR WIRDS (ON 6 HAWSES)

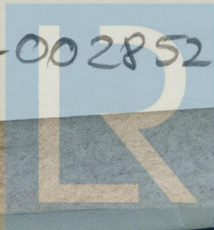
REVISION LIST

NO.	DESCRIPTION	DATE
1	Rev. 1/10/1916	1/10/1916
2	Rev. 2/10/1916	2/10/1916
3	Rev. 3/10/1916	3/10/1916
4	Rev. 4/10/1916	4/10/1916
5	Rev. 5/10/1916	5/10/1916
6	Rev. 6/10/1916	6/10/1916
7	Rev. 7/10/1916	7/10/1916
8	Rev. 8/10/1916	8/10/1916
9	Rev. 9/10/1916	9/10/1916
10	Rev. 10/10/1916	10/10/1916
11	Rev. 11/10/1916	11/10/1916
12	Rev. 12/10/1916	12/10/1916
13	Rev. 13/10/1916	13/10/1916
14	Rev. 14/10/1916	14/10/1916
15	Rev. 15/10/1916	15/10/1916
16	Rev. 16/10/1916	16/10/1916
17	Rev. 17/10/1916	17/10/1916
18	Rev. 18/10/1916	18/10/1916
19	Rev. 19/10/1916	19/10/1916
20	Rev. 20/10/1916	20/10/1916
21	Rev. 21/10/1916	21/10/1916
22	Rev. 22/10/1916	22/10/1916
23	Rev. 23/10/1916	23/10/1916
24	Rev. 24/10/1916	24/10/1916
25	Rev. 25/10/1916	25/10/1916
26	Rev. 26/10/1916	26/10/1916
27	Rev. 27/10/1916	27/10/1916
28	Rev. 28/10/1916	28/10/1916
29	Rev. 29/10/1916	29/10/1916
30	Rev. 30/10/1916	30/10/1916
31	Rev. 31/10/1916	31/10/1916
32	Rev. 32/10/1916	32/10/1916
33	Rev. 33/10/1916	33/10/1916
34	Rev. 34/10/1916	34/10/1916
35	Rev. 35/10/1916	35/10/1916
36	Rev. 36/10/1916	36/10/1916
37	Rev. 37/10/1916	37/10/1916
38	Rev. 38/10/1916	38/10/1916
39	Rev. 39/10/1916	39/10/1916
40	Rev. 40/10/1916	40/10/1916
41	Rev. 41/10/1916	41/10/1916
42	Rev. 42/10/1916	42/10/1916
43	Rev. 43/10/1916	43/10/1916
44	Rev. 44/10/1916	44/10/1916
45	Rev. 45/10/1916	45/10/1916
46	Rev. 46/10/1916	46/10/1916
47	Rev. 47/10/1916	47/10/1916
48	Rev. 48/10/1916	48/10/1916
49	Rev. 49/10/1916	49/10/1916
50	Rev. 50/10/1916	50/10/1916
51	Rev. 51/10/1916	51/10/1916
52	Rev. 52/10/1916	52/10/1916
53	Rev. 53/10/1916	53/10/1916
54	Rev. 54/10/1916	54/10/1916
55	Rev. 55/10/1916	55/10/1916
56	Rev. 56/10/1916	56/10/1916
57	Rev. 57/10/1916	57/10/1916
58	Rev. 58/10/1916	58/10/1916
59	Rev. 59/10/1916	59/10/1916
60	Rev. 60/10/1916	60/10/1916
61	Rev. 61/10/1916	61/10/1916
62	Rev. 62/10/1916	62/10/1916
63	Rev. 63/10/1916	63/10/1916
64	Rev. 64/10/1916	64/10/1916
65	Rev. 65/10/1916	65/10/1916
66	Rev. 66/10/1916	66/10/1916
67	Rev. 67/10/1916	67/10/1916
68	Rev. 68/10/1916	68/10/1916
69	Rev. 69/10/1916	69/10/1916
70	Rev. 70/10/1916	70/10/1916
71	Rev. 71/10/1916	71/10/1916
72	Rev. 72/10/1916	72/10/1916
73	Rev. 73/10/1916	73/10/1916
74	Rev. 74/10/1916	74/10/1916
75	Rev. 75/10/1916	75/10/1916
76	Rev. 76/10/1916	76/10/1916
77	Rev. 77/10/1916	77/10/1916
78	Rev. 78/10/1916	78/10/1916
79	Rev. 79/10/1916	79/10/1916
80	Rev. 80/10/1916	80/10/1916
81	Rev. 81/10/1916	81/10/1916
82	Rev. 82/10/1916	82/10/1916
83	Rev. 83/10/1916	83/10/1916
84	Rev. 84/10/1916	84/10/1916
85	Rev. 85/10/1916	85/10/1916
86	Rev. 86/10/1916	86/10/1916
87	Rev. 87/10/1916	87/10/1916
88	Rev. 88/10/1916	88/10/1916
89	Rev. 89/10/1916	89/10/1916
90	Rev. 90/10/1916	90/10/1916
91	Rev. 91/10/1916	91/10/1916
92	Rev. 92/10/1916	92/10/1916
93	Rev. 93/10/1916	93/10/1916
94	Rev. 94/10/1916	94/10/1916
95	Rev. 95/10/1916	95/10/1916
96	Rev. 96/10/1916	96/10/1916
97	Rev. 97/10/1916	97/10/1916
98	Rev. 98/10/1916	98/10/1916
99	Rev. 99/10/1916	99/10/1916
100	Rev. 100/10/1916	100/10/1916



LLOYDS

002846-002852-0079 © 2020



Lloyd's Register
Foundation

Ardrossan Dockyard Gt

Yards 404

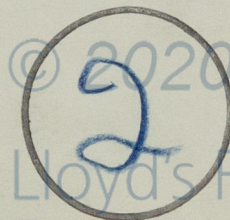
Battle Case ★

—
Mudship Section

764
— Glasgow Rpt to 72711

GLASGOW REPORT No. 72960

RECORDS DEPT.,
LONDON



Lloyd's Register
Foundation

002846-002852-0079