

29 MAR 1952

Rpt. C. 11 (Contd.)

Index No. ....

## LLOYD'S REGISTER OF SHIPPING

UNITED WITH THE BRITISH CORPORATION REGISTER

Ship's Name S. S. "ESSE CHEYENNE"

Official No. 169020.

Memorandum of alterations reported since ship was surveyed for assignment of Load Lines in .....

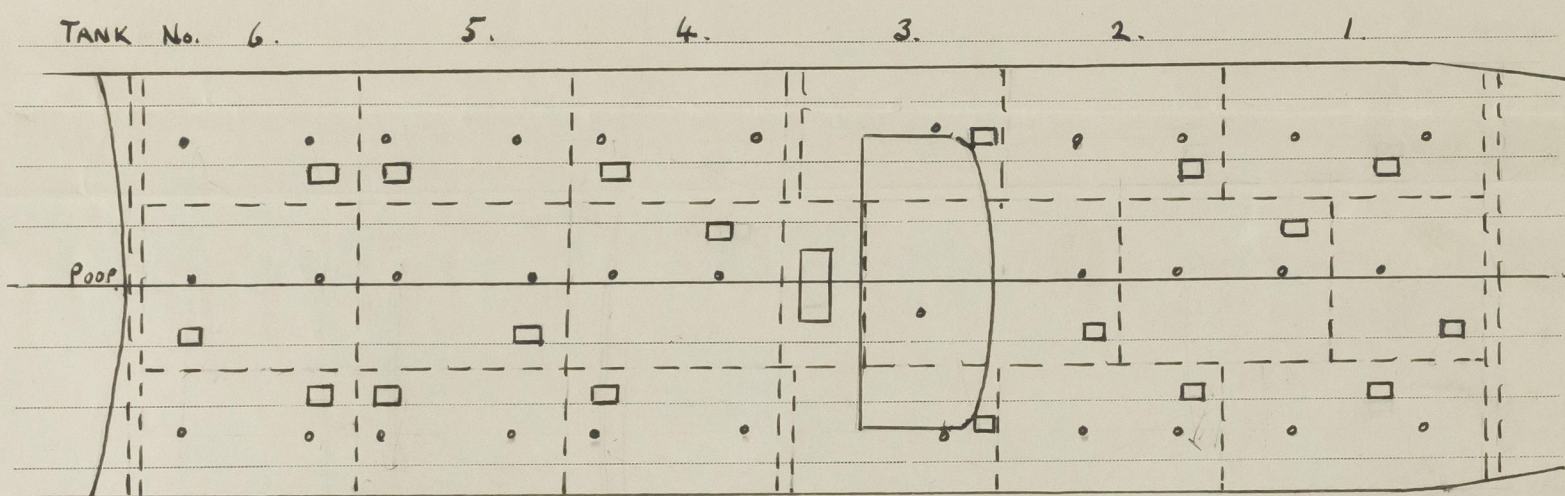
Openings in forecastle bulkhead are now closed by portable plates attached by hook bolts.

Openings in poop bulkhead are closed by hinged steel W.T. doors and portable plate with through bolts.

Butterworth openings 12" dia. have been cut in upper deck in way of cargo tanks, closed by plates attached by studs. Positions of openings in relation to cargo hatches are shown in sketch below.

Butterworth openings shown •

Cargo hatches shown □



Deck doubling fitted at Butterworth openings which are abreast cargo hatches.

Newcastle-on-Tyne.  
27th March 1952.

James. D. H. Key  
Surveyor to Lloyds Register  
of Shipping.

a copy of this report has been placed on board the vessel.