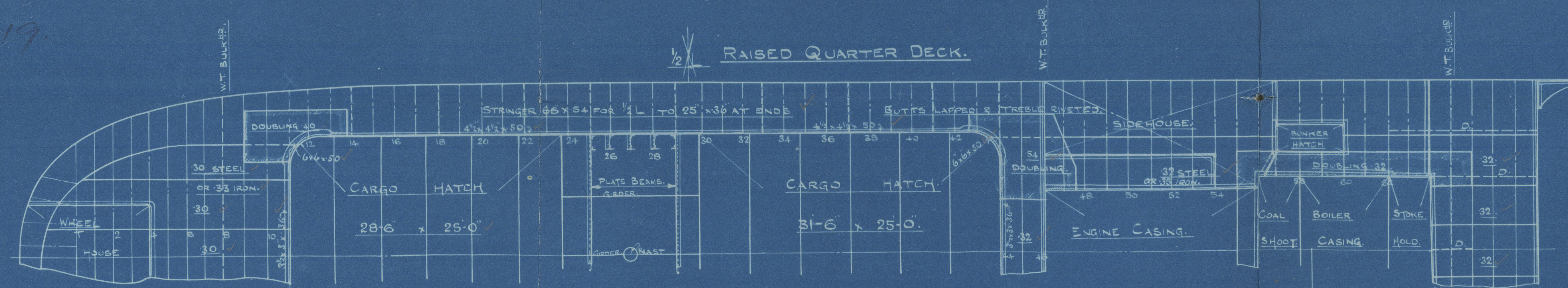
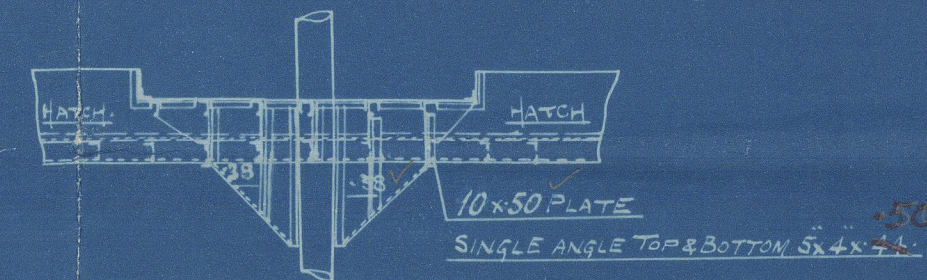


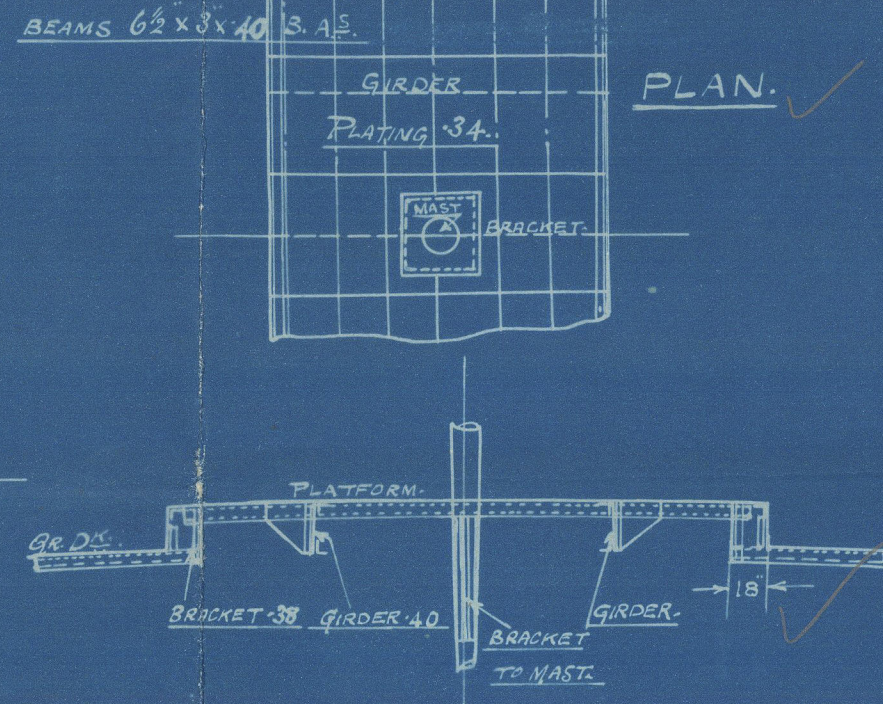
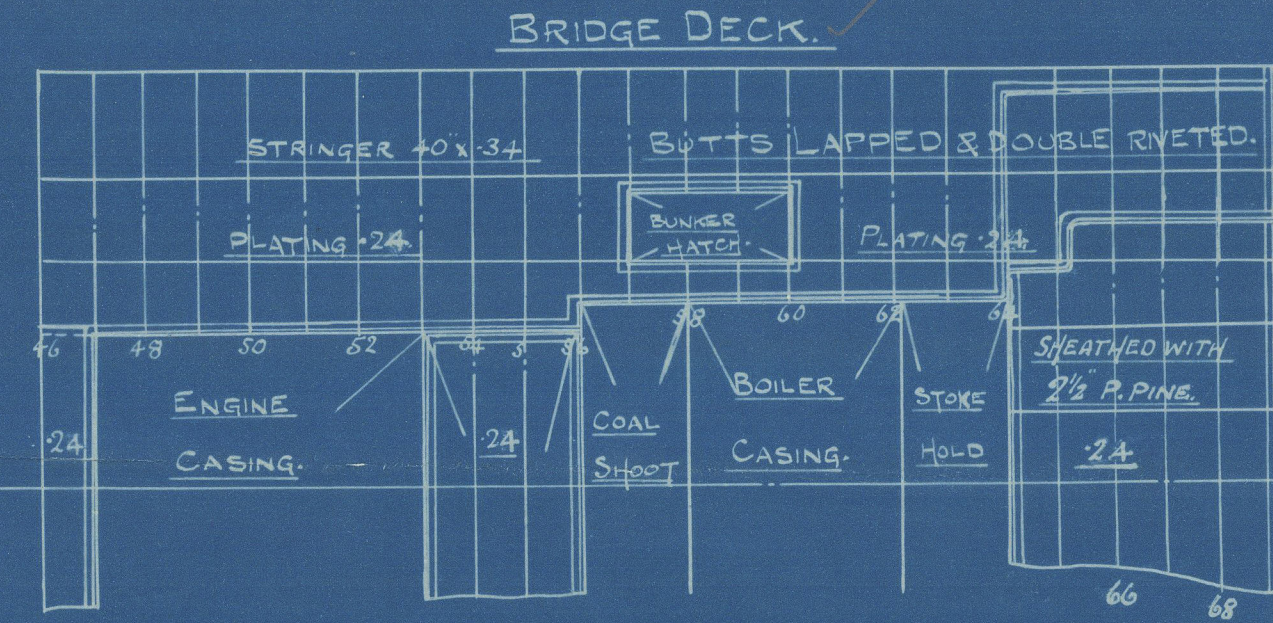
28.1.19.



ELEVATION OF RAISED PLATFORMS.



PLAN.



FOR ARRANGEMENT OF DECK SCARPING.  
SEE SEPARATE PLAN.

MESSRS. WOOD SKINNER & CO. LTD.  
SHIPBUILDERS.  
NEWCASTLE - ON - TYNE.

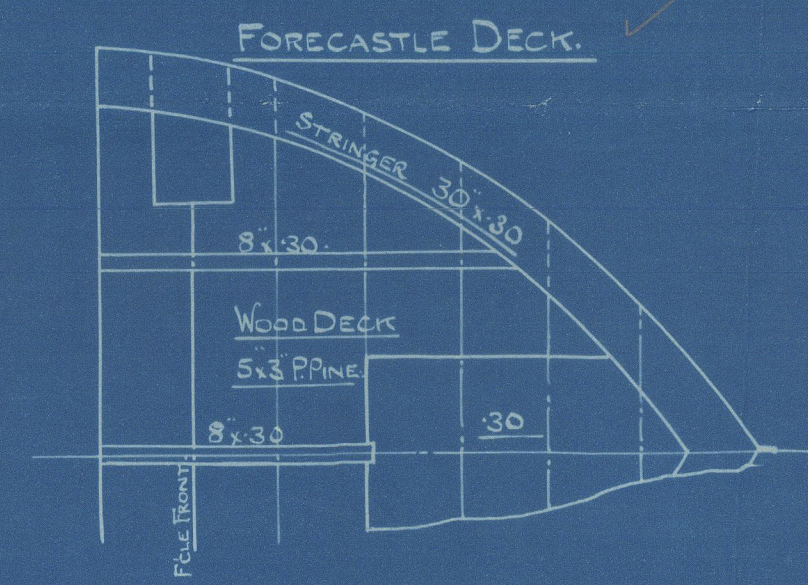
# PROPOSED DECK PLANS

OF A STEEL SCREW STEAMER.

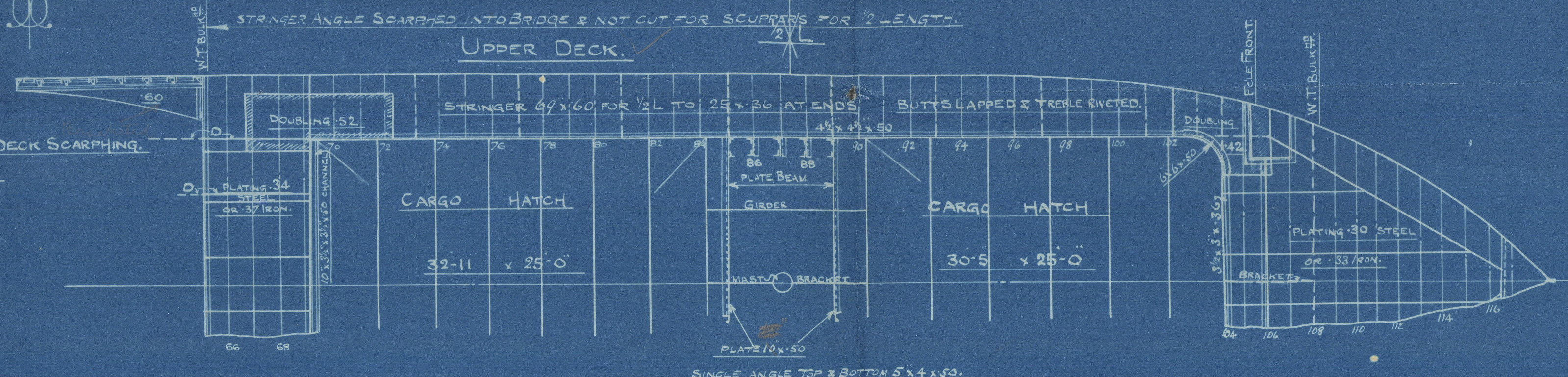
TO CLASS 100.A1. AT LLOYDS

PRINCIPAL DIMENSIONS:- 260'0" B.P. x 37'6" M<sup>LD</sup> x 18'7" M<sup>LD</sup>.

SCALE 1/8" = 1 FOOT.



FORE-CASTLE DECK.



UPPER DECK.

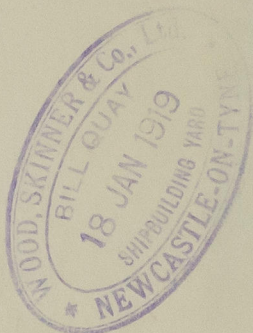
B.L.L.  
28.1.19.

DESIGN A. N° 218 SHIP.



© 2020  
Lloyd's Register  
F042851-002859-0027





© 2020

Lloyd's Register  
Foundation

002258-062869-0071



Plan of Decks  
Design A

Wood Skinner & Co. Ltd

No. 218

WED. AUG 14 1919



---

S.S. FLASHLIGHT,  
NEWCASTLE ON TYNE.

Report No. 4350.0.

---



© 2020

Lloyd's Register  
Foundation

002858-002859-001