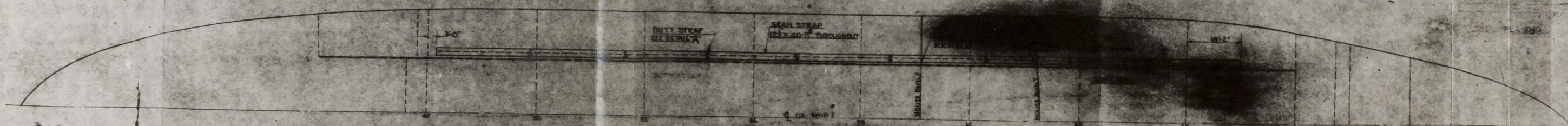
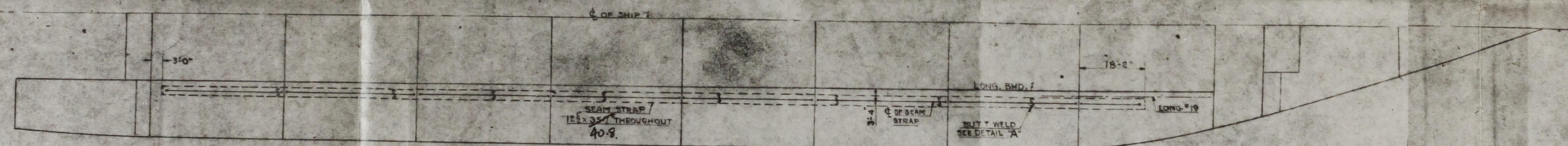


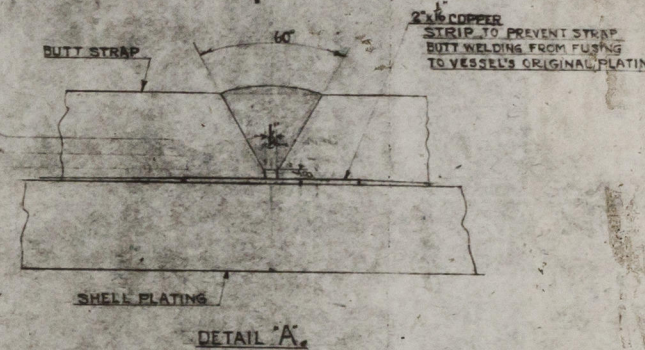
LOCATION OF BUTT STRAPS ON SIDE SHELL
STARBOARD SIDE SHOWN. PORT SIDE SIMILAR
NOT EXPANDED AND NOT TO SCALE



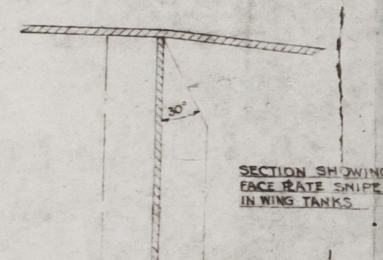
LOCATION OF BUTT STRAPS ON UPPER DECK
PORT SIDE SHOWN. STARBOARD SIDE SIMILAR (NOT TO SCALE)



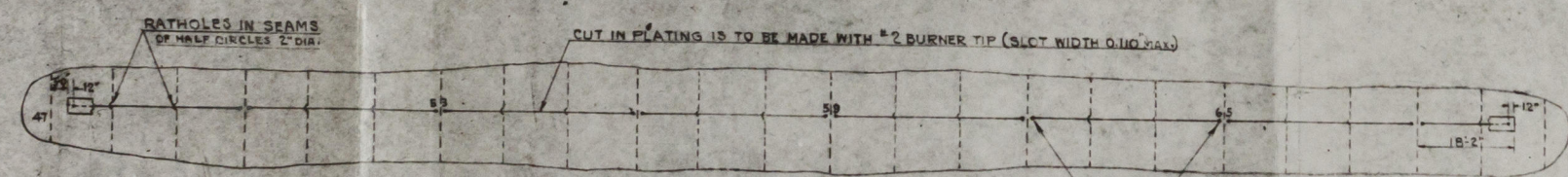
LOCATION OF BUTT STRAPS ON BOTTOM SHELL
STARBOARD SIDE SHOWN. PORT SIDE SIMILAR (NOT TO SCALE)



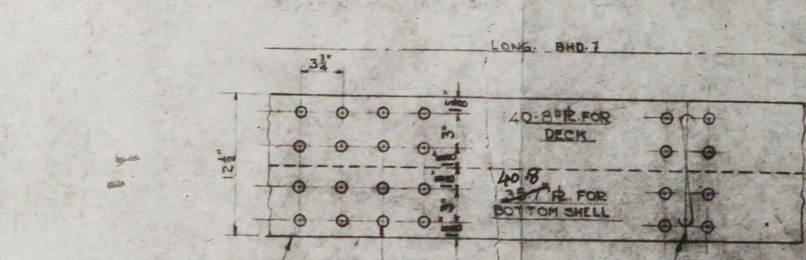
DETAIL 'A'



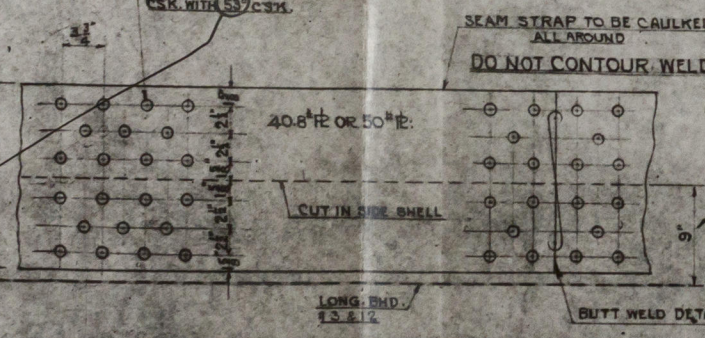
SECTION SHOWING
FACE PLATE SPLICING
IN WING TANKS



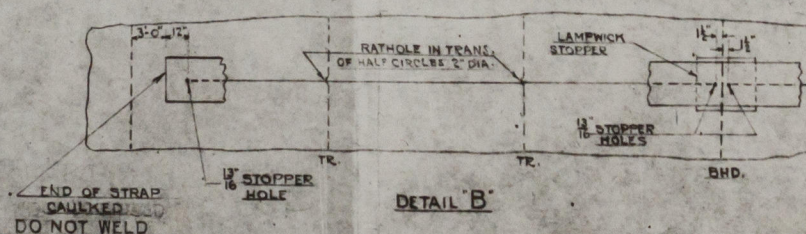
TYPICAL CUT IN SHELL & DK. PLATE



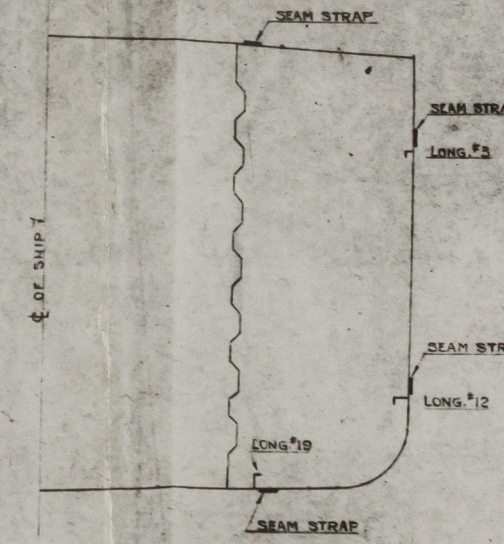
DETAIL OF SEAM STRAPS IN
WAY OF UPPER DECK & BOTTOM SHELL



DETAIL OF SIDE SHELL SEAM STRAPS



DETAIL 'B'



TRANS. SECTION @ FR. 57

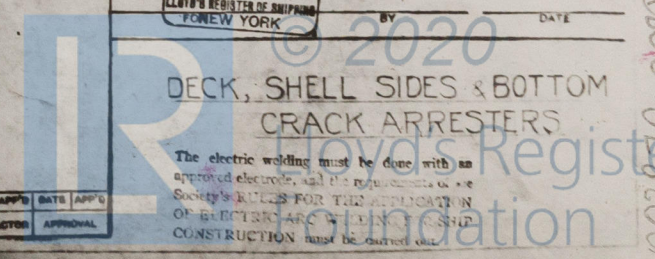
"THEOBALDIUS"
GAL. RPT. Office CR.
5005

T-2 TANKER (CLASS)	
TODD SHIPYARDS CORPORATION BROOKLYN DIVISION BROOKLYN, N. Y.	
GIBBS & COX, INC. NEW YORK CITY DESIGN AGENTS	
DR NO. T2-1101-19	ALT.
SCALE: NONE	DATE: 4-2-52
DRAWN BY: J. J. JONES	EXAMINED: [Signature]
TRACED BY: [Signature]	APPROVED: [Signature]
CHECKED BY: [Signature]	APPROVED: [Signature]
APPROVED	
FOR MR. J. J. JONES	BY [Signature]
FOR MR. J. J. JONES	BY [Signature]

DECK, SHELL SIDES & BOTTOM
CRACK ARRESTERS

The electric welding must be done with an approved electrode, and the welder must be a licensed welder for the application of electric welding to the hull of a ship. CONSTRUCTION must be carried out.

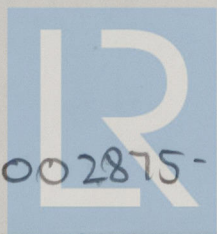
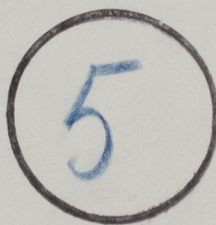
NO.	REV.	DATE	APP'D.	DATE	APP'D.



"THEOBALDIUS" ★

Deck, shell sides & bottom crack arresters

RECORDS DEPT.,
LONDON



© 2020

Lloyd's Register
Foundation

002870-002875-0004