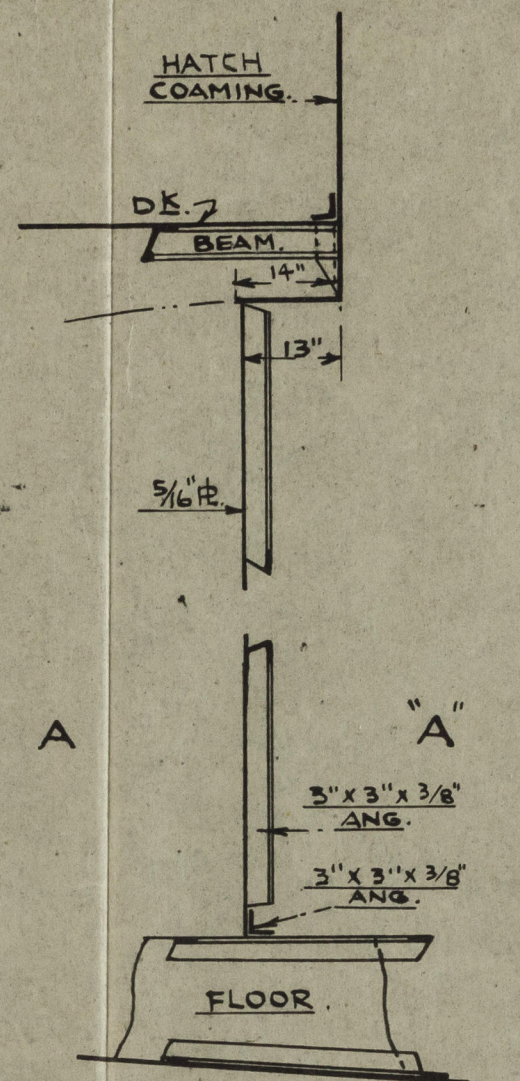
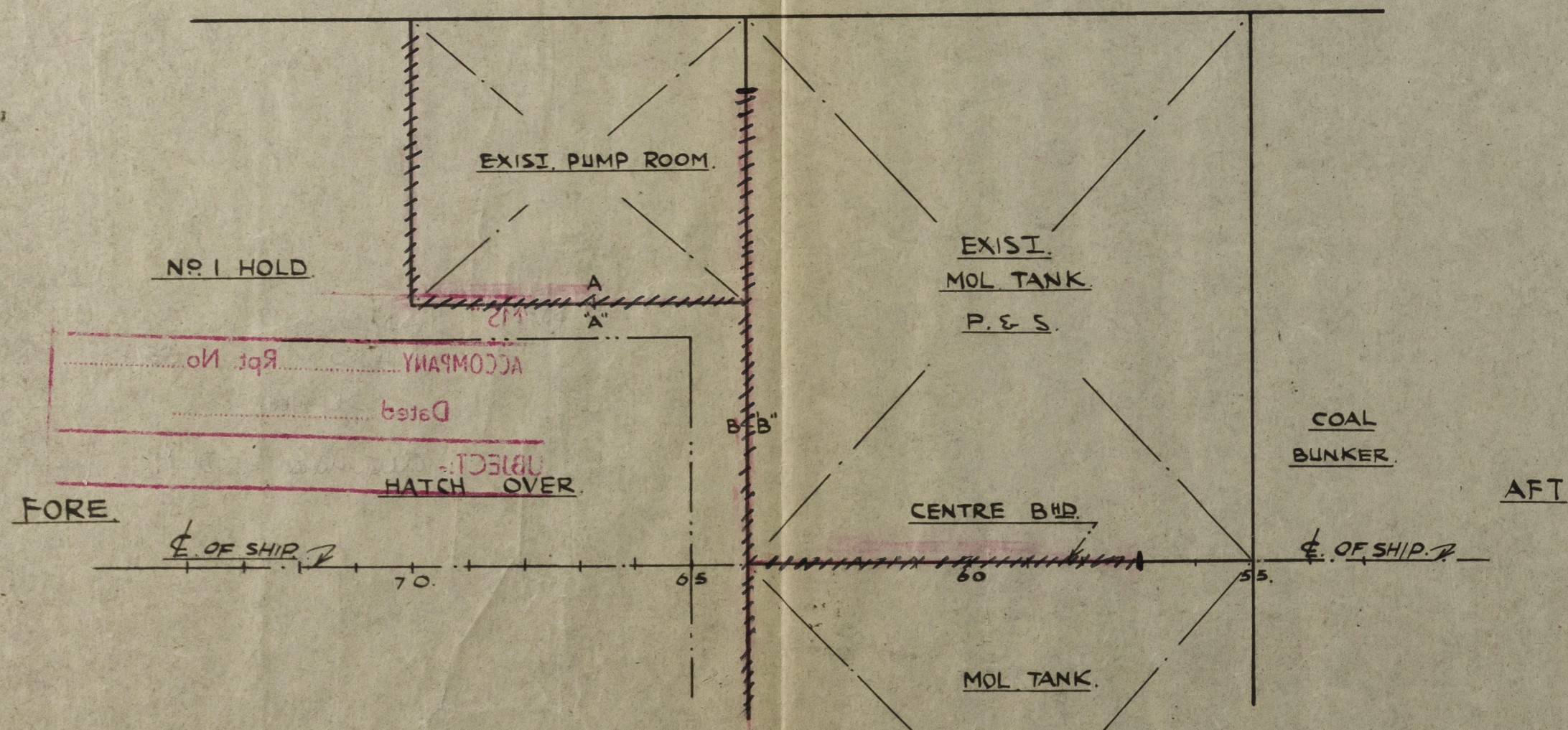
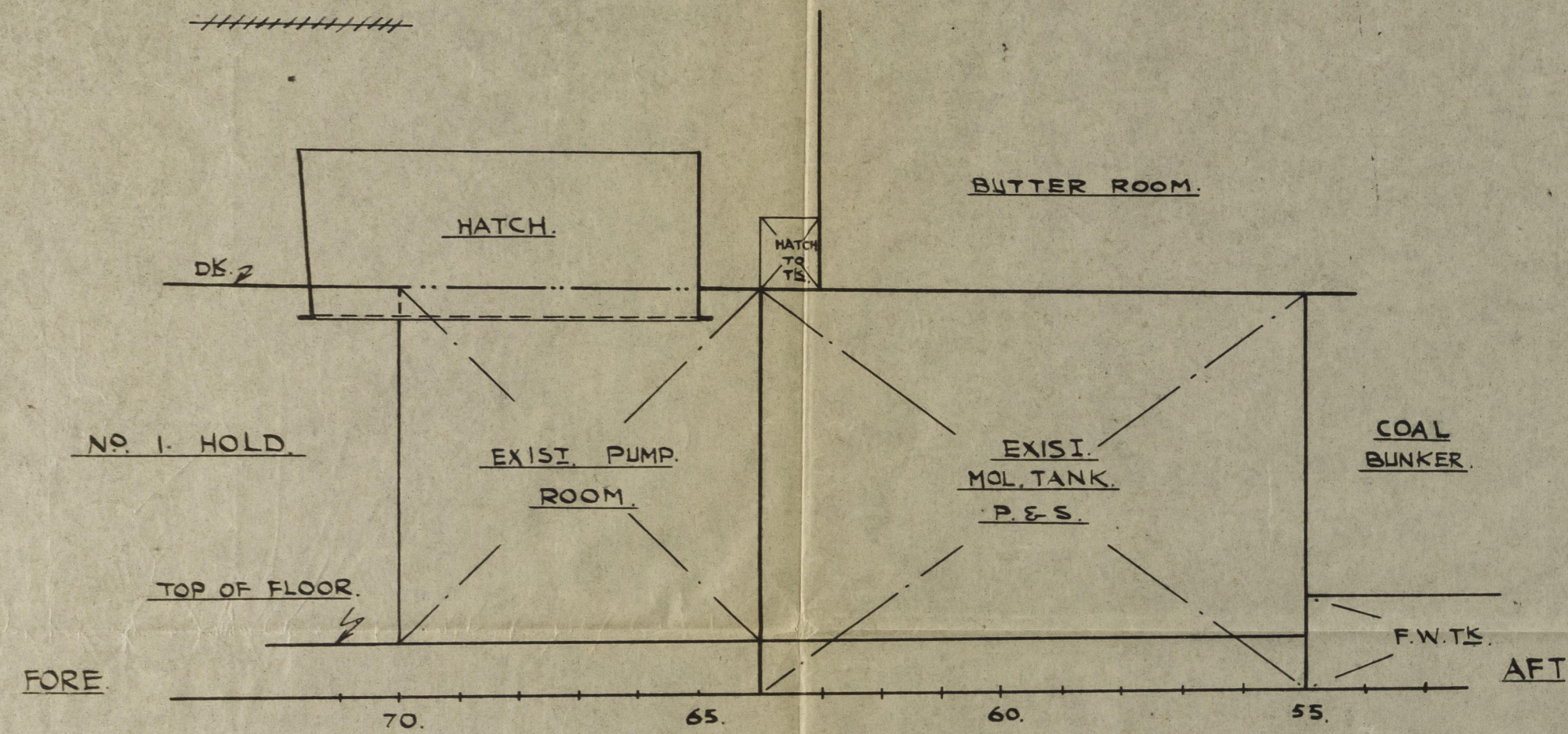


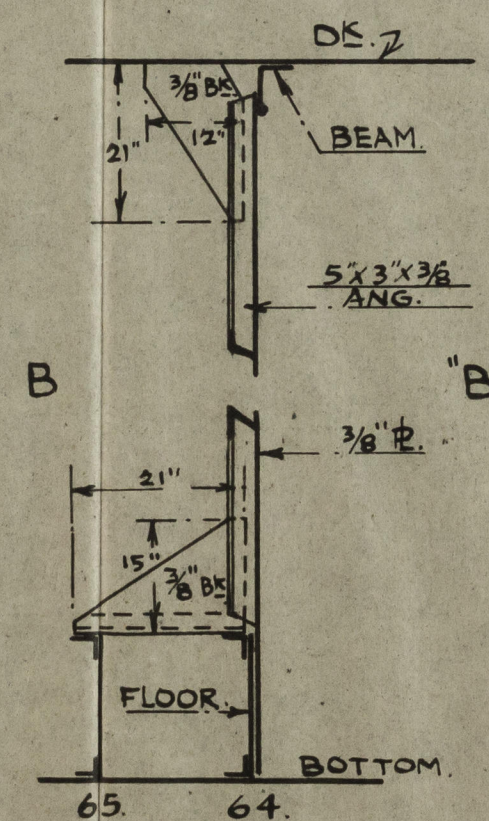
S.S. "JAMSONS" EX. "COBARGO" CONVERSION OF BHDS. IN NO. 1 HOLD

SCALE: - $\frac{1}{4}" \& \frac{1}{2}" = 1 \text{ FOOT.}$

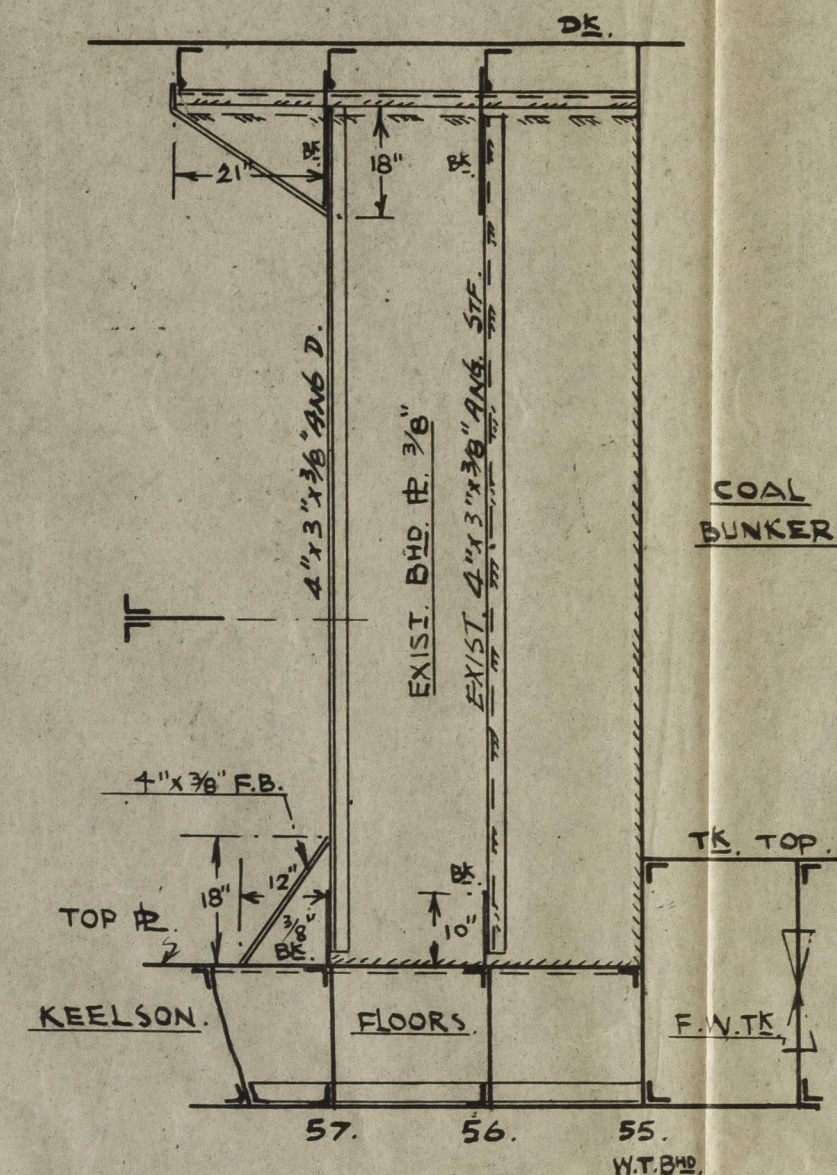
BULKHEADS REMOVED
DURING GENERAL EXAMINATION SURVEY
Held Hong Kong SEPT. 1960



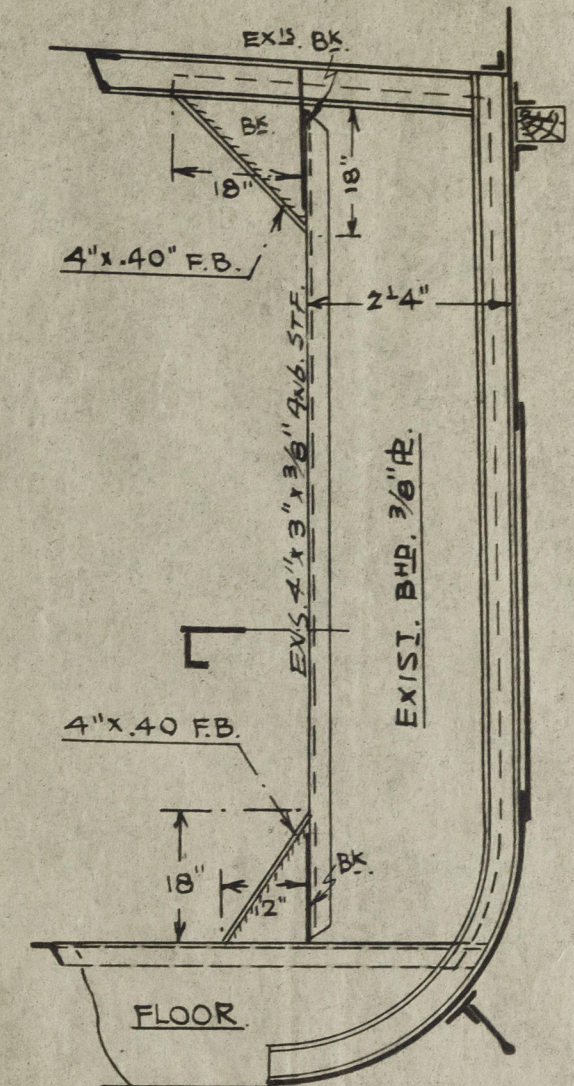
EXIST. PUMP ROOM
BHD.



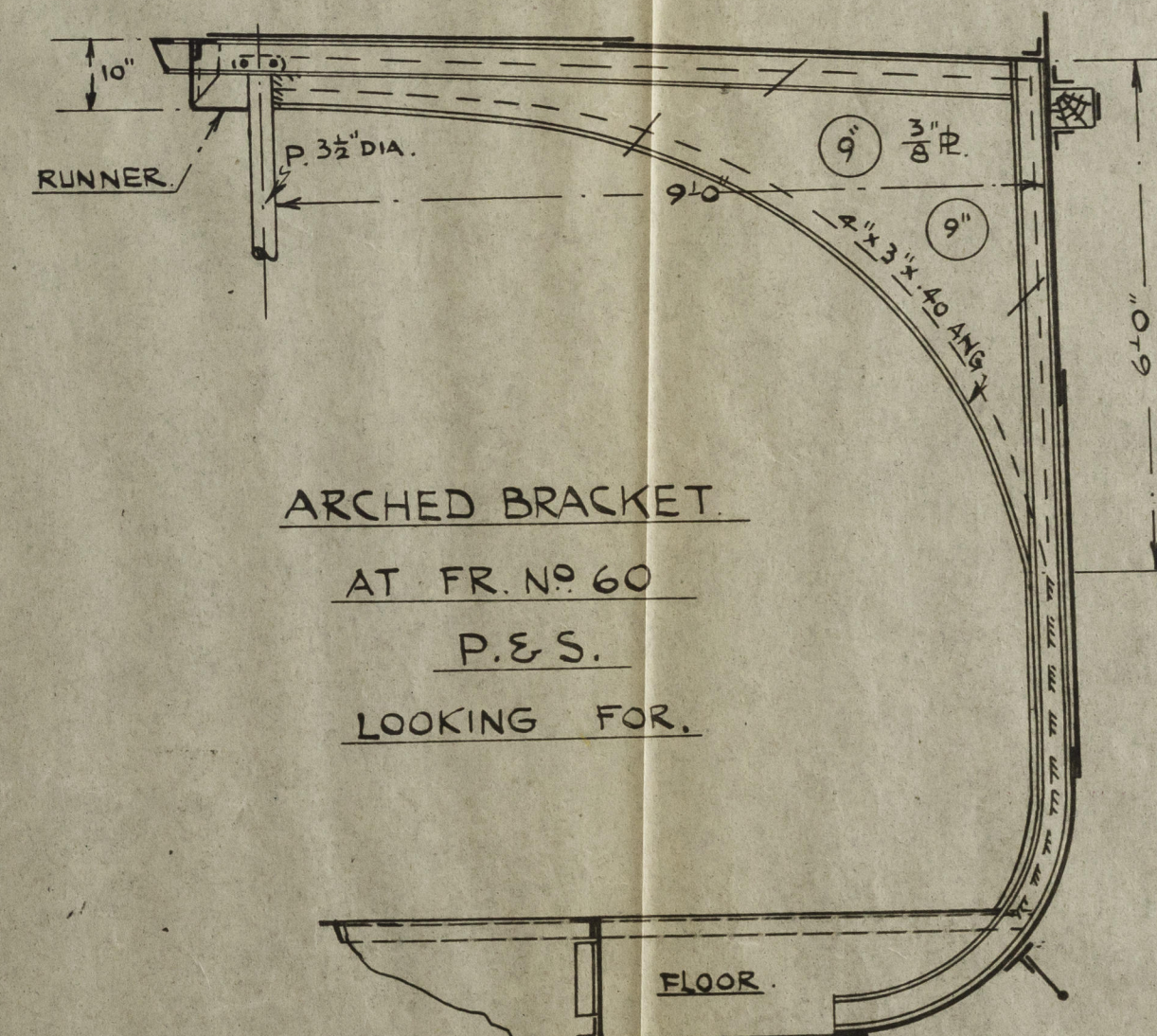
EXIST. MOL. TKS.
FOR. BHD.



CONVERSION OF
CENTRE BHD.



CONVERSION OF
FR. NO. 64 BHD.



ARCHED BRACKET.

AT FR. NO. 60
P.E.S.
LOOKING FOR.



2-9-60/NO 355
DRAWN BY. C.C. TSUN