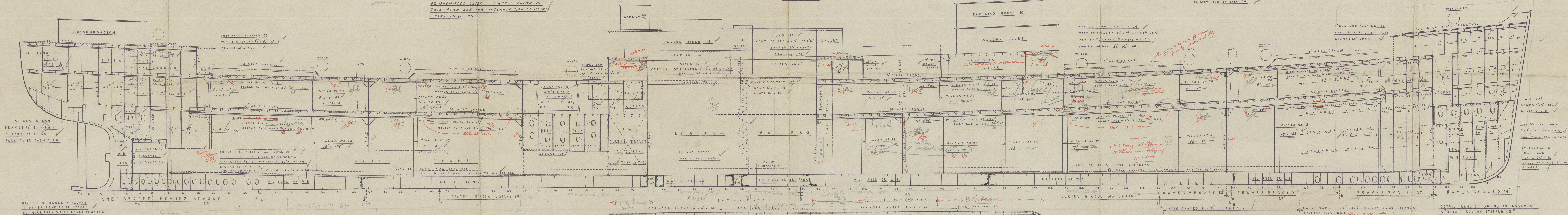


513-14  
PROFILE & DECKS PLAN.

DIMENSIONS AS PER RULES.  
LENGTH B.P. 450'-0"  
BREADTH M.M. 58'-2 1/2"  
DEPTH M.M. 32'-1 1/2"  
CLASS 100 A1 + FULL SCANTLING VESSEL.  
SCALE 1" = 10'-0"

DETAIL "PILLARS & GIRDERS" PLAN WILL  
BE SUBMITTED LATER. FIGURES SHOWN ON  
THIS PLAN ARE FOR DETERMINATION OF MAIN  
SCANTLING ONLY.



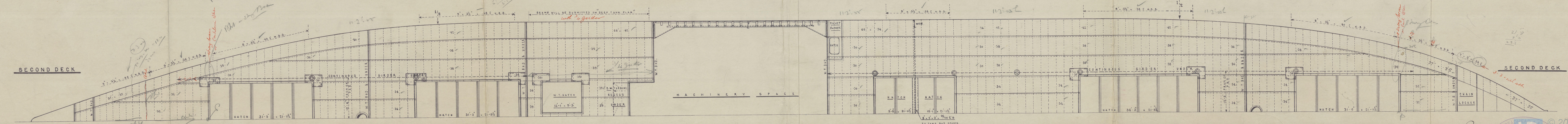
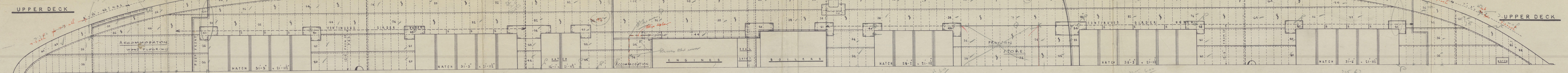
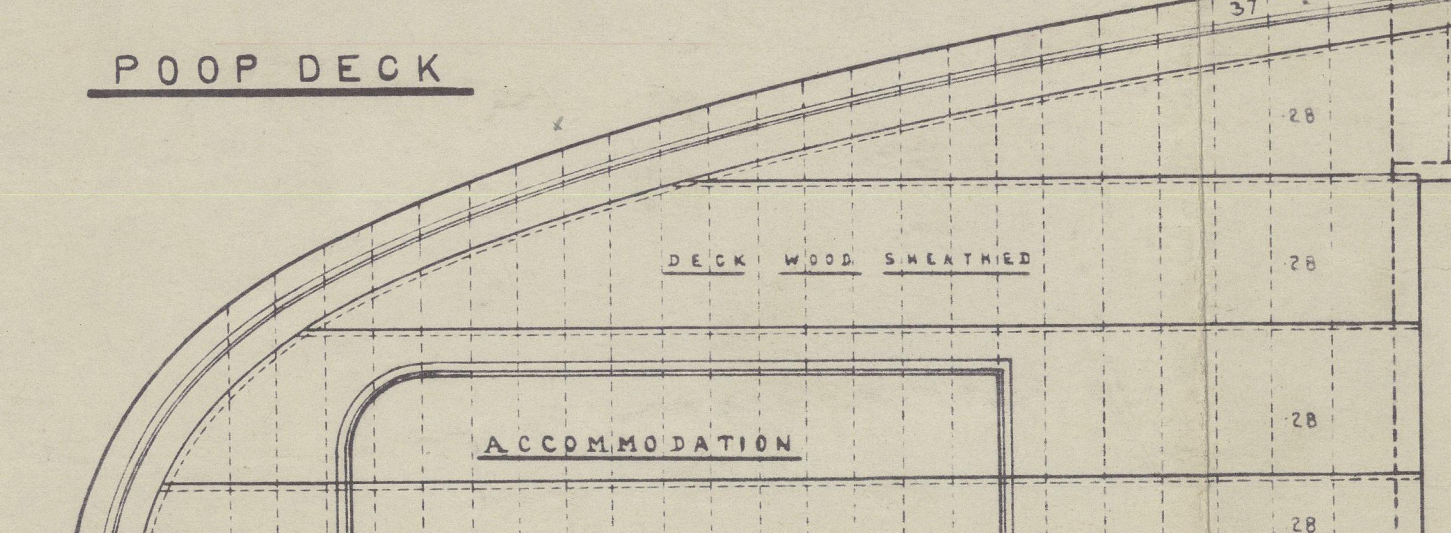
PARTICULARS OF FREEBOARD.	
96% OF LENGTH INCLUDING CRUISER STERN	449.28
LENGTH BETWEEN PERPENDICULARS	450.00
BREADTH MOULDED (58'-3 1/2")	58.29
DEPTH MOULDED TO UPPER DECK (32'-2")	32.16
85% OF DEPTH MOULDED (27'-4")	27.33
MOULDED DISPLACEMENT AT 85% DEPTH MOULDED	15,980 T
CORRECT OF FINENESS	760
APPROX TONS PER INCH	50.5
KEEL OF BEAM	14
SCANTLING: CLASS 100 A1 + FULL SCANTLING VESSEL	
SHEER INSIDE OF STERN POST	5.3
WHEEL CURVE	10.6
FAIR PERPENDICULAR (10.6)	10.6
FAIRBANK (10.6)	10.6
LENGTH OF POOP - 37'-3" IN CENTER	46.10
POOP - 180' 2" IN CENTER	180.2
BRIDGE - 180' 2" IN CENTER	180.2
CLASS 1	
CLOSING	
APPLIANCES	
POOP 8'-0" HIGH; BRIDGE 7'-6" HIGH; 7'-9" HIGH	

OWNER'S NOTES  
UPPER & BRIDGE DECK PARTING MARKS  
UNDER 7/8" RULE THICKNESS TO BE  
INCREASED 300 OVER RULE.

BRIDGE DECK  
SHEATHED WITH 5.3 P.P.

JOHN READHEAD & SONS LTD.  
SHIPBUILDERS, ENGINEERS & CO.  
SOUTH SHIELDS.

DETAIL PLANS OF PARTING ARRANGEMENT  
& "DOUBLE BOTTOM STIFFENING"  
WILL BE SUBMITTED.





W

afghanistan

"Turkistan"

(2)

Readhead

513/64

Prof + sh.