

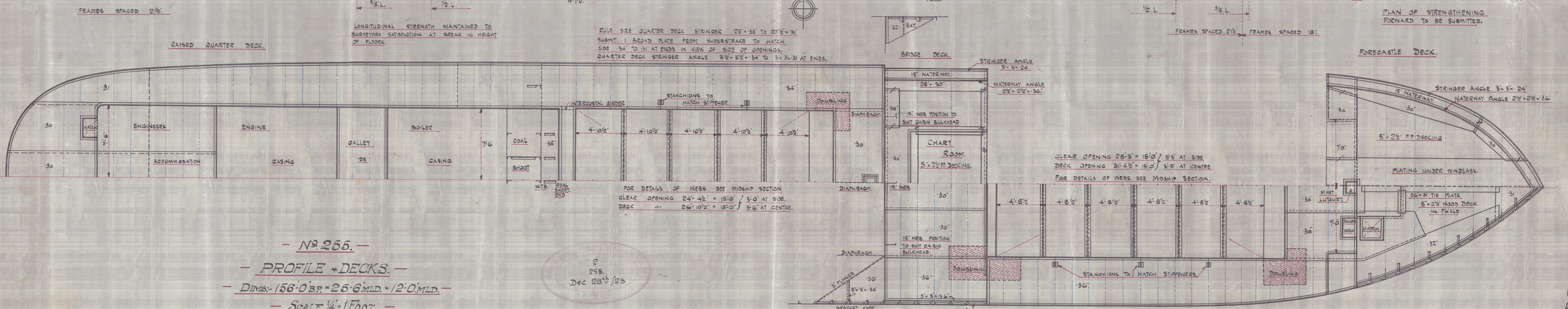
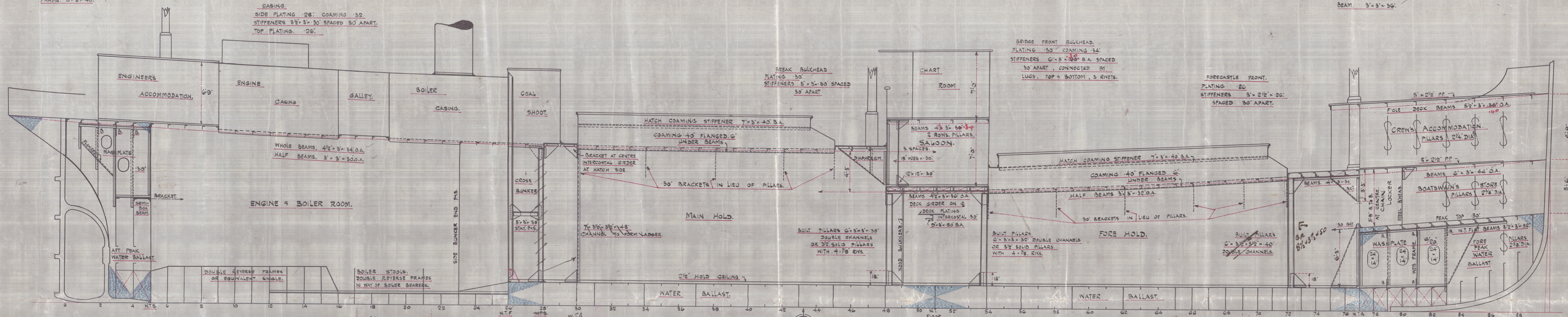
4/1/24

W.T. BULKHEAD No. 5.  
PLATING .30" BOTTOM PLATE .30" IN LIEU  
OF DOUBLING IN WAY OF SHAFT  
STIFFENERS 6" x 8" x 40" B.A. SPACED 24" APART.  
4 BRACKETED TO DECK.  
BEAM 3" x 8" x 36"  
FRAME 3" x 8" x 40"

NON-W.T. BULKHEAD No. 26.  
PLATING .30" BOTTOM PLATE .30"  
STIFFENERS 5" x 3" x 34" B.A.  
SPACED 36" APART.  
FRAME 3" x 5" x 40"  
BEAM 3" x 5" x 36"

W.T. BULKHEAD No. 28.  
PLATING .26" TO .26" BOTTOM PLATE .40" x 36"  
STIFFENERS 6" x 3" x 48" B.A. SPACED 30" APART.  
BRACKETED TOP & BOTTOM, 15" x 15" x 36" 2 1/2" R.  
FRAME 3" x 3" x 40"  
BEAM 3" x 3" x 36"

W.T. BULKHEAD No. 77.  
PLATING .30" BOTTOM PLATE .34"  
STIFFENERS BELOW PLATE 6" x 3" x 36" B.A. BRACKETED TO PLATE  
STIFFENERS ABOVE PLATE 4" x 3" x 30" O.A. NO BRACKETS BUT  
RIVETED TO BOUNDARY BARS TOP & BOTTOM.  
FRAME 3" x 3" x 40"  
BEAM 3" x 3" x 36"



- No. 255 -  
- PROFILE + DECKS -  
- DIMS: 156' 0" BR x 26' 6" MLD x 12' 0" MLD -  
- SCALE 1/4" = 1 FOOT -

2  
255.  
Dec 28<sup>th</sup>/23

W.Y.  
4.1.24

THE GOOLE SHIPBUILDING & REPAIR CO LTD  
GOOLE.



Goole 255  
5/5 Louthwell.  
Hull Report No. 35414.

P/F

