

—MIDSHIP SECTION.—

S.S.Nº 437. 450'-0" x 60'-0" x 37'-9" KEEL TO AWN⁹ DK. BEAMS.

—AWNING DK. CLASS.—
—LLOYD'S 100A1 CLASS.—

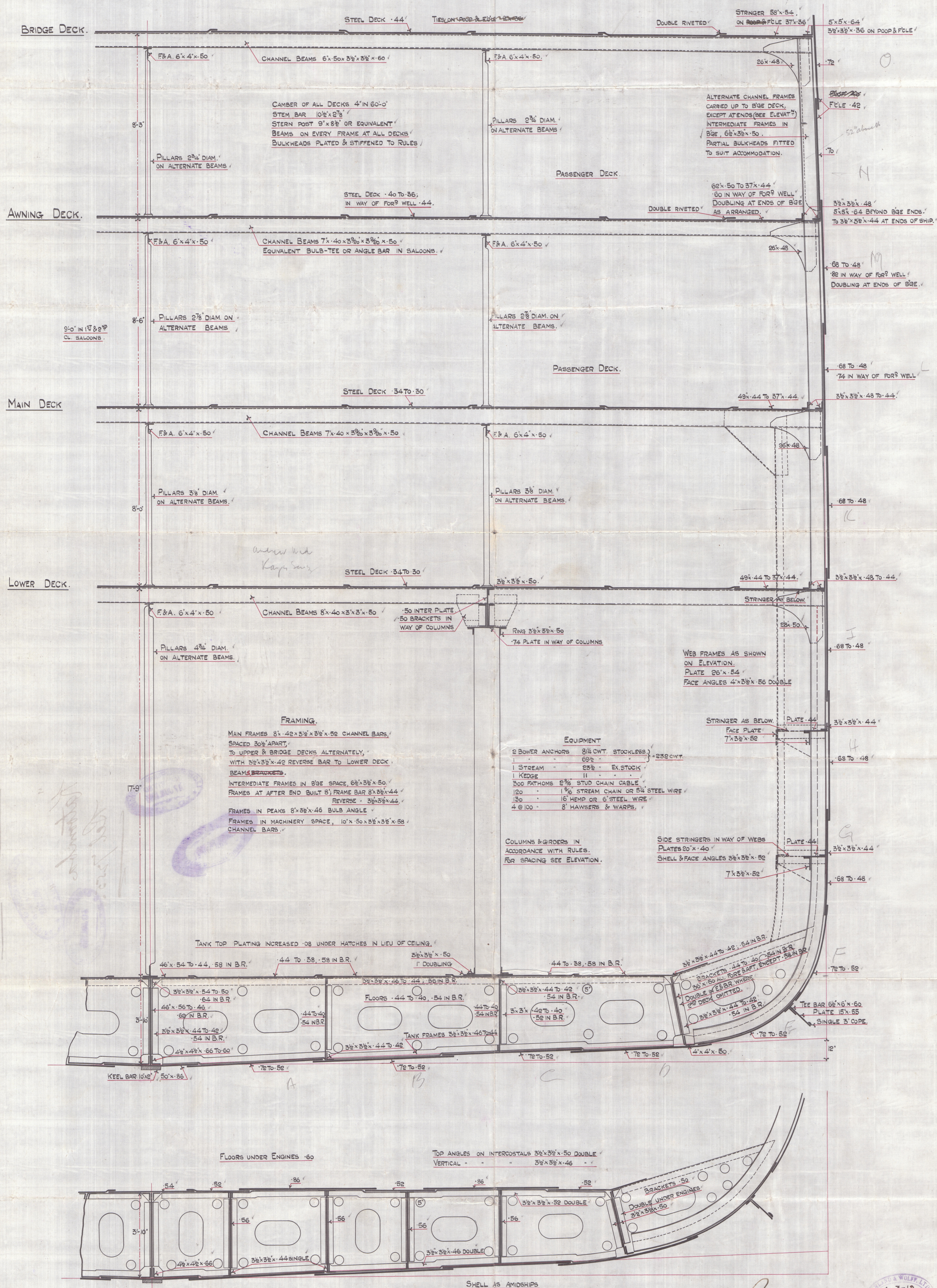
SCALE 1/2" = FT.

NUMERALS.

$$\begin{array}{rcll} 60 + 37.75 - 8 & = & B + D = 89.75 & 1^{ST} \text{ NUMER.} \checkmark \\ 450 \times 89.75 & = & L(B+D) = 40,387 & 2^{ND} \checkmark \\ 40,387 + 4,803 + 2,066 & = & 47,256 & \text{EQUIPMENT.} \end{array}$$

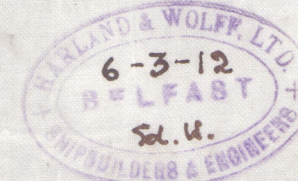
PROPORTIONS.

DEPTHS TO LENGTH - 9.78 TO BRIDGE DECK. ✓
 " " " " - 11.92 " AWNING DECK. ✓
 BREADTHS TO LENGTH - 7.50. ✓



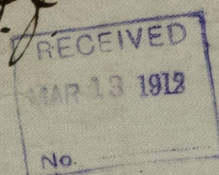
• SECTION • IN • WAY • OF • ENGINES •

C.B.
11.3.12.



Harland & Wolff

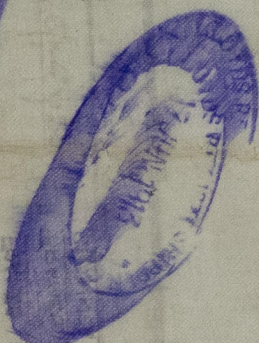
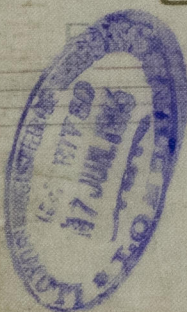
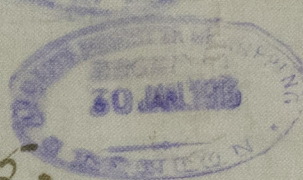
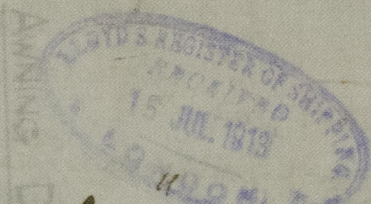
Nº 437.



Amended Midship Section

11

Katoomba
Rel 7255.



FRAMES AT AFTER END BUILT 8; FRAME BAR 8x15x24
INTERMEDIATE FRAMES IN 803 SPACE 6x15x20
DRAWING 25x35x20
WITH 12x15x20 LEXES, BAR 10 TOWERS 0.24

BAR 8x15x20
IN MACHINERY SPACE 10x20x28x38x38
IN BEAMS 8x15x20 BAR 10x10

TANK TOP PLATING INCREASED OF 10000 HOURS IN RUN OF CEILING

10x24x24 18 IN 17.5

10x24 10x28 28 IN 17.5

25x35x20

1 DOUBLING



© 2021

Lloyd's Register
Foundation

002907-002915-002