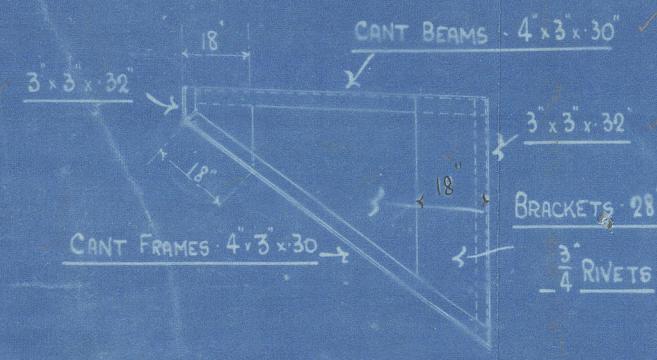
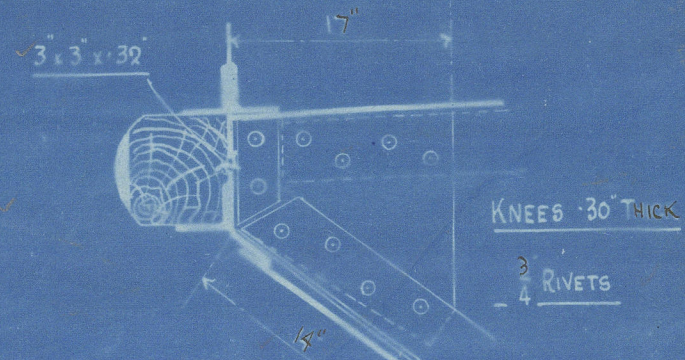


23.1.20

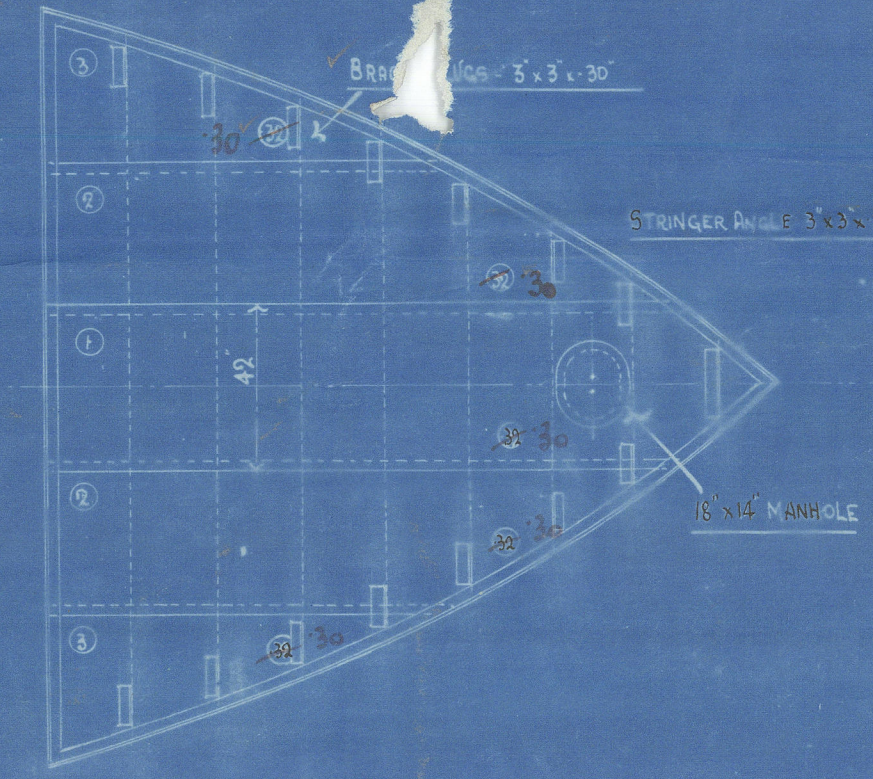
LLOYD'S NUMERALS:
 TRANSVERSE NUMBER (B+D) 33.5
 LONGITUDINAL L (B+D) 4255
 DEPTH (d) 9.55
 PROPORTIONS $\frac{1}{2} \times 12.4 \times \frac{1}{2} \times 5.63$ AT ROD DECK - UNDER 10.



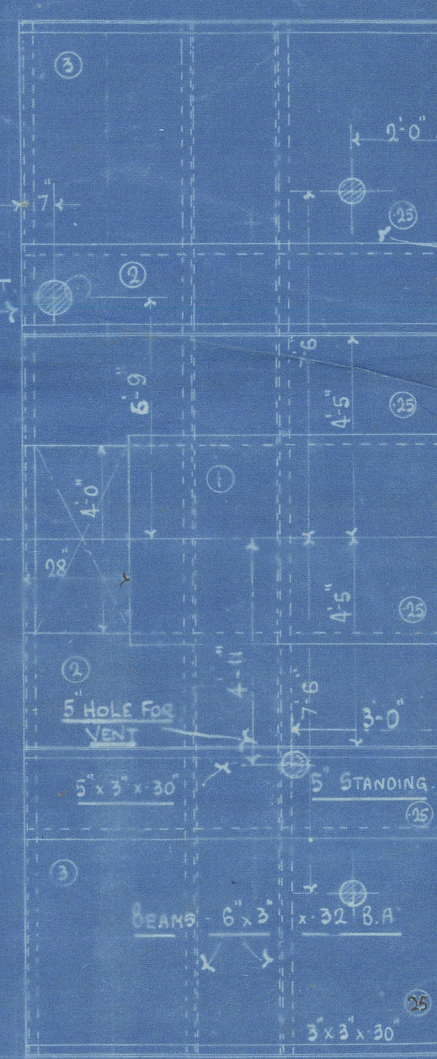
DETAIL OF CANT FRAMES



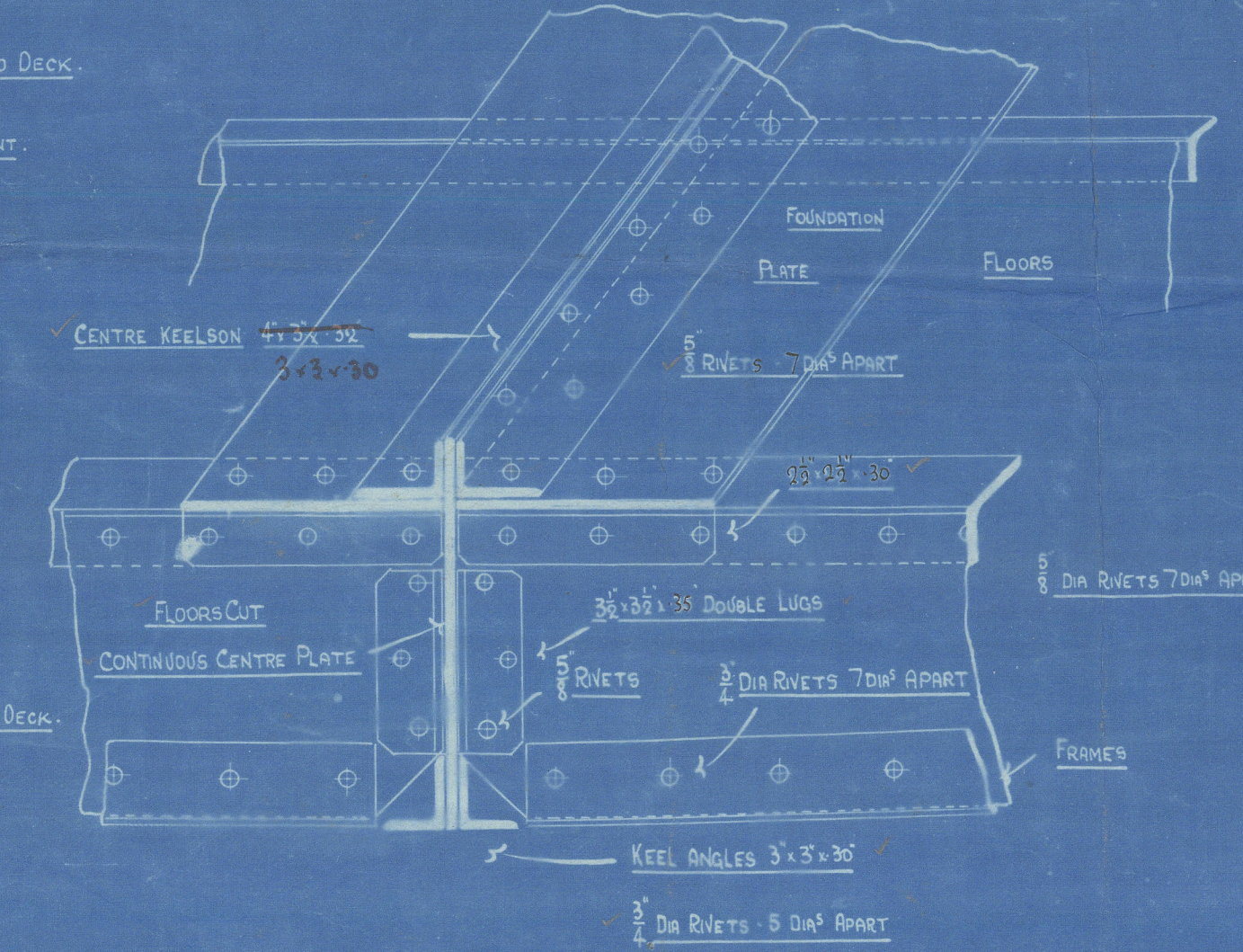
ARRANGEMENT OF FRAMES AT AFT KNUCKLE



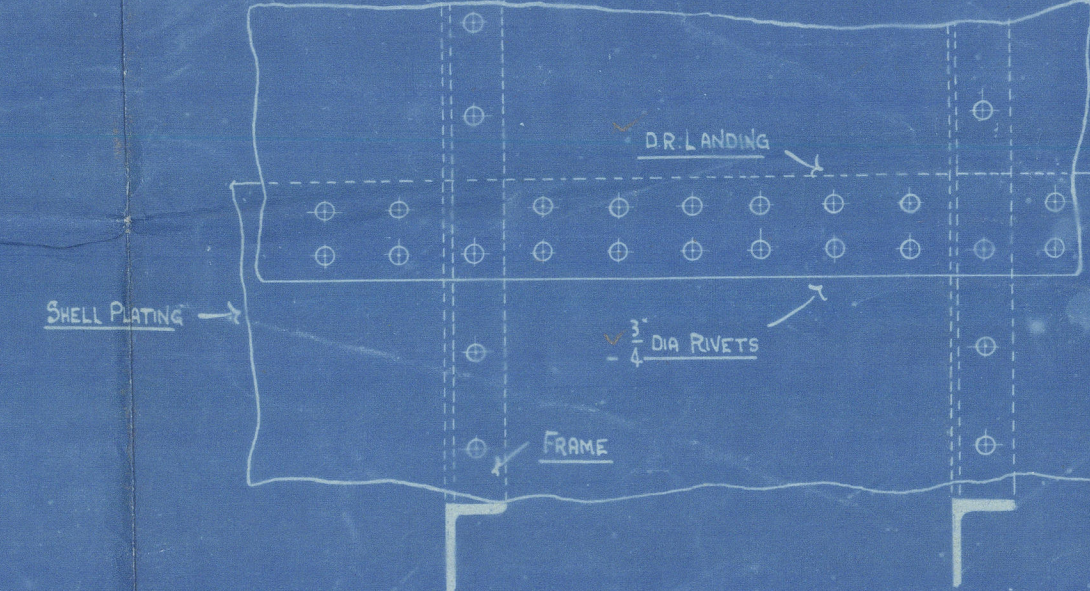
DETAIL OF FORE PEAK TANK TOP



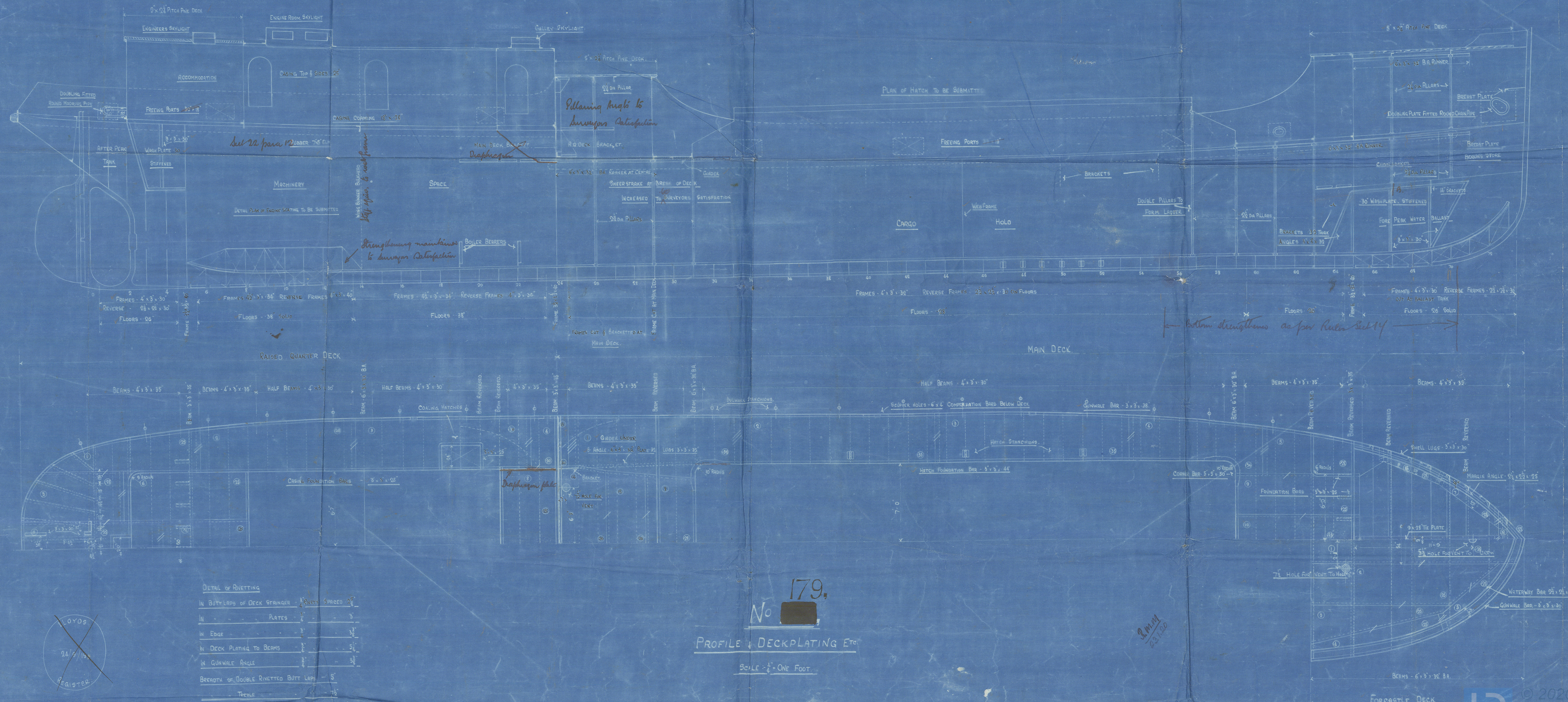
DETAIL OF BRIDGE DECK



ELEVATION OF FLOORS



RIVETING IN SHELL AMIDSHIPS



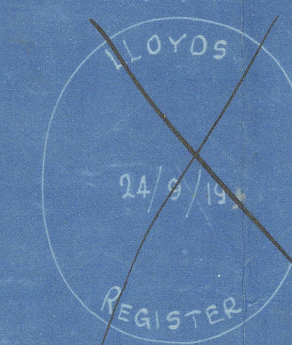
DETAIL OF RIVETING

IN BUTTLAPS OF DECK STRINGERS	1/2" SPACED 2 1/2"
IN PLATES	1/2"
IN EDGE	1/2"
IN DECK PLATING TO BEAMS	1/2"
IN GUNWALE ANGLE	1/2"
BREADTH OF DOUBLE RIVETED BUTT LAP	5"
TONGUE	7 1/2"
SINGLE EDGE	2 1/2"

No 179

PROFILE & DECKPLATING Etc

SCALE 1/4" = ONE FOOT



Crabtree & Co

S.S. 179

Profile

NH. BEN VEEN
EXst Crosshill.

Lon. 83810

RETAIN



© 2020

Lloyd's Register
Foundation

002916-002922-0002.