

Lloyd's Register of Shipping.
SURVEYS FOR FREEBOARD.
(CONDITIONS OF ASSIGNMENT.)

Ship's Name "NACELLA"

Port of Survey **NEWCASTLE-ON-TYNE**

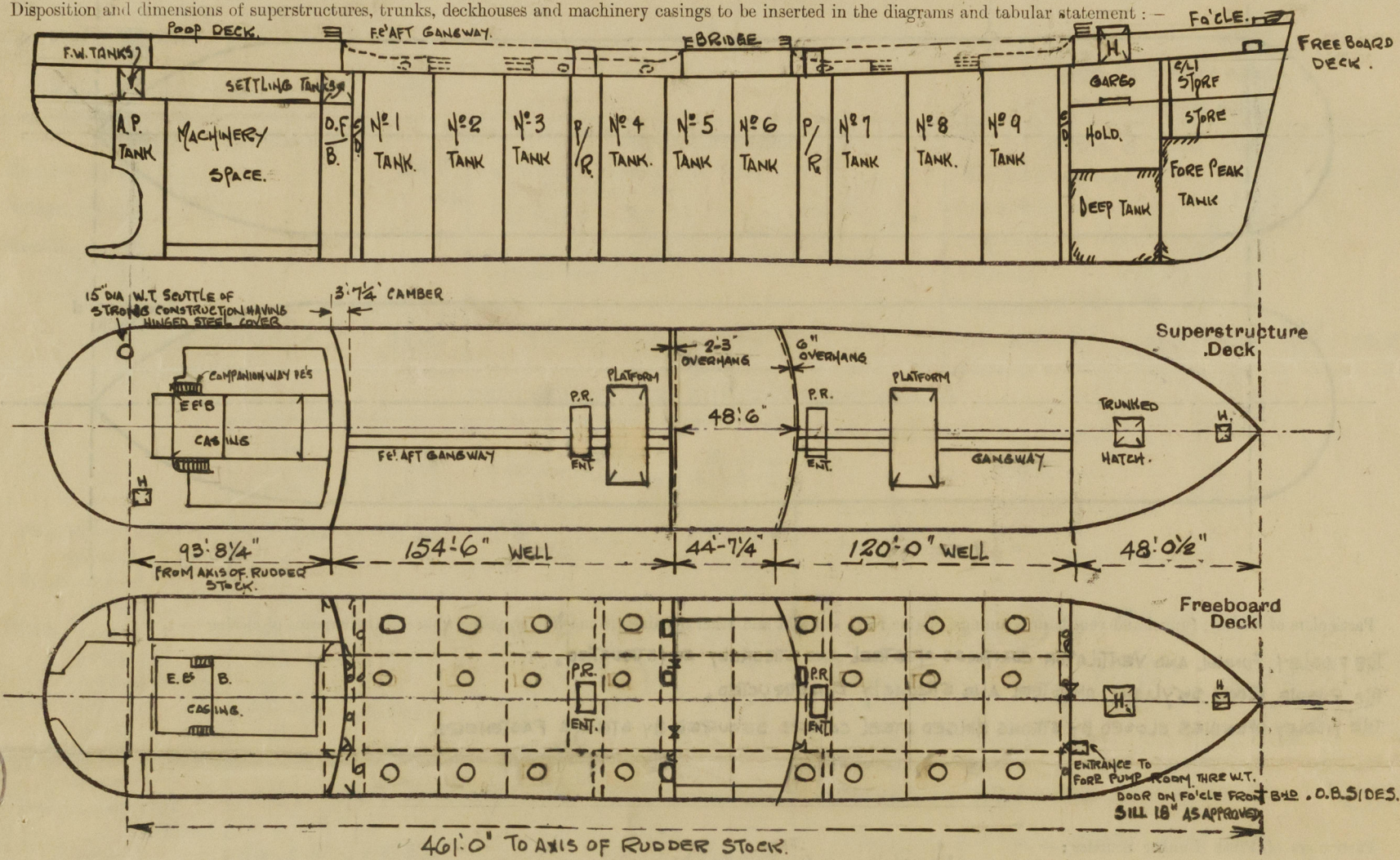
Official Number NOT YET ASSIGNED 168444

Surveyor's Signature A. Little

Nationality and Port of Registry BRITISH. - LONDON.

Date of Survey DURING CONSTRUCTION

Disposition and dimensions of superstructures, trunks, deckhouses and machinery casings to be inserted in the diagrams and tabular statement : —



Particulars of Superstructures, Trunks, Casings, Deckhouses.

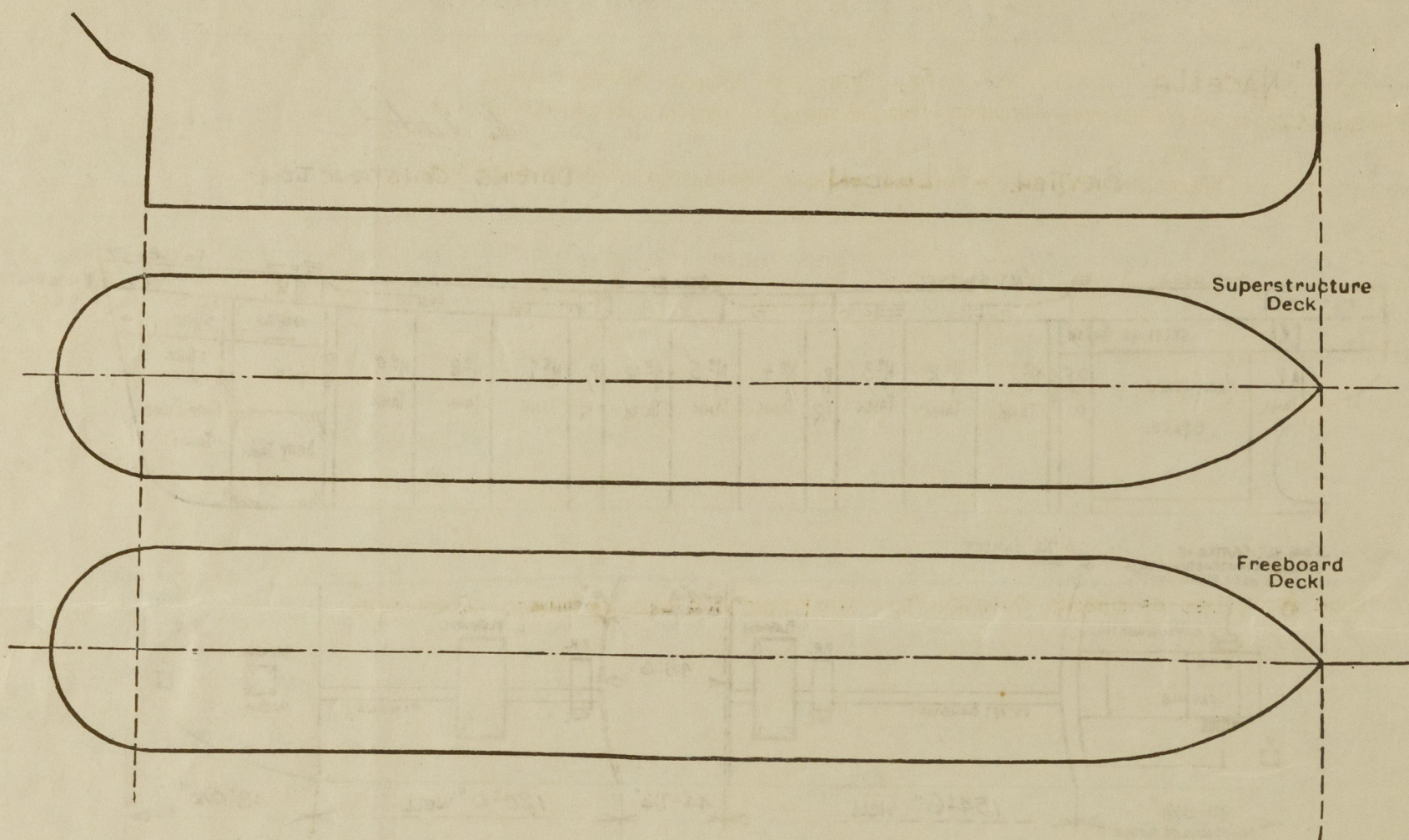
	Coaming	Plating	Stiffeners	Spacing	End Attachments of Stiffeners	Size of Openings	Height of Sills	Height of Casings
Poop Bulkhead44" ✓	.44" ✓	8"x4"x.50 o.a. (WELDED)	GENERALLY 30"	WELDED TOP & BOTTOM.	5'-0" x 2'-6" ✓	18" ✓	7'-6" ✓
Raised Quarter Deck Bulkhead ...	✓							
Bridge, After Bulkhead30" ✓	.30" ✓	3"x2½"x.25 o.a. (WELDED)	GENERALLY ABOUT 30" ✓	WELDED TOP & BOTTOM.	5'-1" x 3'-1" 5'-0" x 2'-0" ✓	18" ✓	7'-6" ✓
Bridge, Forward Bulkhead44" ✓	.44" ✓	8"x4"x.50 o.a. (WELDED)	GENERALLY 32" ✓	D ₂ .	5'-0" x 2'-0" ✓	18 ✓	7'-6" ✓
Forecastle Bulkhead30" ✓	.30" ✓	3"x2½"x.25 o.a. (WELDED)	GENERALLY 30" ✓	D ₂ .	5'-0" x 2'-6" 4'-6" x 2'-0" 5'-1" x 4'-1"	18" ✓	7'-6" ✓
Trunk, Aft	✓							
Trunk, Forward	✓							
Exposed Machinery Casings on Free-board or Raised Quarter Decks ...	✓							
Exposed Machinery Casings on Superstructure Decks34" ✓	.30" ✓	3"x.30" FLATS WELDED	GENERALLY 30" ✓	BRACKETED AT TOP.	✓	✓	8'-4" AND 10'-0"
Machinery Casings within Superstructures not fitted with Class I Closing Appliances	✓							
Deckhouses on Flush Deck Ships ...								

Particulars of Closing Appliances (state if capable of being manipulated from both sides).

Poop Bulkhead	2 HINGED STEEL W.T. DOORS CAPABLE OF BEING OPERATED FROM BOTH SIDES.	✓
Raised Quarter Deck Bulkhead	...	✓	
Bridge, After Bulkhead	1 HINGED STEEL W.T. DOOR CAPABLE OF BEING OPERATED FROM BOTH SIDES. 2 OPENINGS CLOSED BY PORTABLE STEEL PLATE COVER FITTED WITH HOOK BOLTS.	✓
Bridge, Forward Bulkhead	1 HINGED STEEL W.T. DOOR CAPABLE OF BEING OPERATED FROM BOTH SIDES 2 " " " " " " " " " " " "	✓
Forecastle Bulkhead	1 OPENING CLOSED BY PORTABLE STEEL PLATE COVER FITTED WITH HOOK BOLTS.	✓
Exposed Machinery Casings on Free-board or Raised Quarter Decks	..	✓	
Exposed Machinery Casings on Super-structure Decks	✓ NO OPENINGS ✓	
Machinery Casings within Superstructures not fitted with Class I Closing Appliances	✓	
Deckhouses on Flush Deck Ships	...	✓	

PARTICULARS OF PROTECTION TO OPENINGS, ETC.

The following diagrams should be used to indicate the positions of cargo and coaling hatchways, gangway, cargo and coaling ports, ventilators, companionways, etc., which would affect the seaworthiness of the ship:—



Particulars of fiddley, funnel and ventilator coamings, engine room skylight and other openings in machinery casing tops and their means of closing:—

- THE FIDDLEY, FUNNEL AND VENTILATOR COAMINGS OF STEEL AND STRONGLY CONSTRUCTED. ✓
- THE ENGINE ROOM SKYLIGHT OF STEEL AND STRONGLY CONSTRUCTED. ✓
- THE FIDDLEY OPENINGS CLOSED BY STRONG HINGED STEEL COVERS SECURED BY STRONG FASTENERS. ✓

Particulars of Flush Bunker Scuttles:—

NONE. ✓

Particulars of Companionways:— PUMP ROOM ENTRANCES OF STEEL AND STRONGLY CONSTRUCTED HAVING HINGED STEEL W.T. DOOR CAPABLE OF BEING OPERATED FROM BOTH SIDES - 4'6" x 2'3" SILL 24" HIGH. ✓

COMPANIONWAY AT POOP DECK P.E.S. AFT END TO TWEEN DECKS BELOW HAVING HINGED STEEL W.T. DOORS CAPABLE OF BEING OPERATED FROM BOTH SIDES. SILL 18" HIGH. DOORS 5'0" x 2'0" ✓

Particulars of Ventilators in exposed positions on freeboard and superstructure decks:—

POOP DECK

8 @ 6" DIA. COAMINGS 30" x 30" C.V. ✓

FORECASTLE DECK

7 @ 10" DIA COAMINGS 36" x 34" C.V. ✓
2 @ 8" DIA COAMINGS 36" x 30" C.V. ✓

ALL VENTILATOR COAMINGS
CLOSED BY WOOD PLUGS AND
CANVAS COVERS. ✓

BRIDGE DECK.

8 @ 6" DIA. COAMINGS 30" x 30" C.V. ✓

A NUMBER OF STRONGLY CONSTRUCTED GOOSE NECK VENTS ON POOP DECK TO ACCOMM. BELOW,
18" 30" ABOVE DECK TO OPENING. ✓

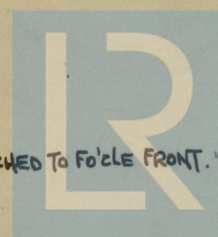
UPPER DECK.

4 @ 24" DIA. COAMINGS 40 THK. TO PUMP ROOMS. C.V. ✓
HIGH COAMINGS SUITABLY SUPPORTED
BY BRACKETS TO PUMP ROOM ENTRANCES.

Particulars of Air Pipes in exposed positions on freeboard, raised quarter, or superstructure decks:—

1 @ 2" DIA AIR PIPE	To COFFERDAM STERN COMPARTMENT.	18" HIGH TO OPENING ABOVE POOP DECK.	✓
1 @ 2 1/2" "	" " " " " "	" " " " " "	✓
1 @ 3" "	" " " " " "	" " " " " "	✓
4 @ 3" "	" " " " " "	" " " " " "	✓
2 @ 3" "	" " " " " "	" " " " " "	✓
1 @ 2" "	" " " " " "	" " " " " "	✓
1 @ 4 1/2" "	" " " " " "	" " " " " "	✓
2 @ 4" "	" " " " " "	" " " " " "	✓
1 @ 3" "	" " " " " "	" " " " " "	✓
2 @ 4" "	" " " " " "	" " " " " "	✓
2 @ 3" "	" " " " " "	" " " " " "	✓
2 @ 3" "	" " " " " "	" " " " " "	✓
2 @ 4" "	" " " " " "	" " " " " "	✓
1 @ 4" "	" " " " " "	" " " " " "	✓

ALL AIR PIPES CLOSED BY WIRE
GAUZES AND WOOD PLUGS. OR W.T. FLAPS. ✓



© 2021

Lloyd's Register
Foundation