

15.4.37

# No 1547.

## RUDDER FRAME.

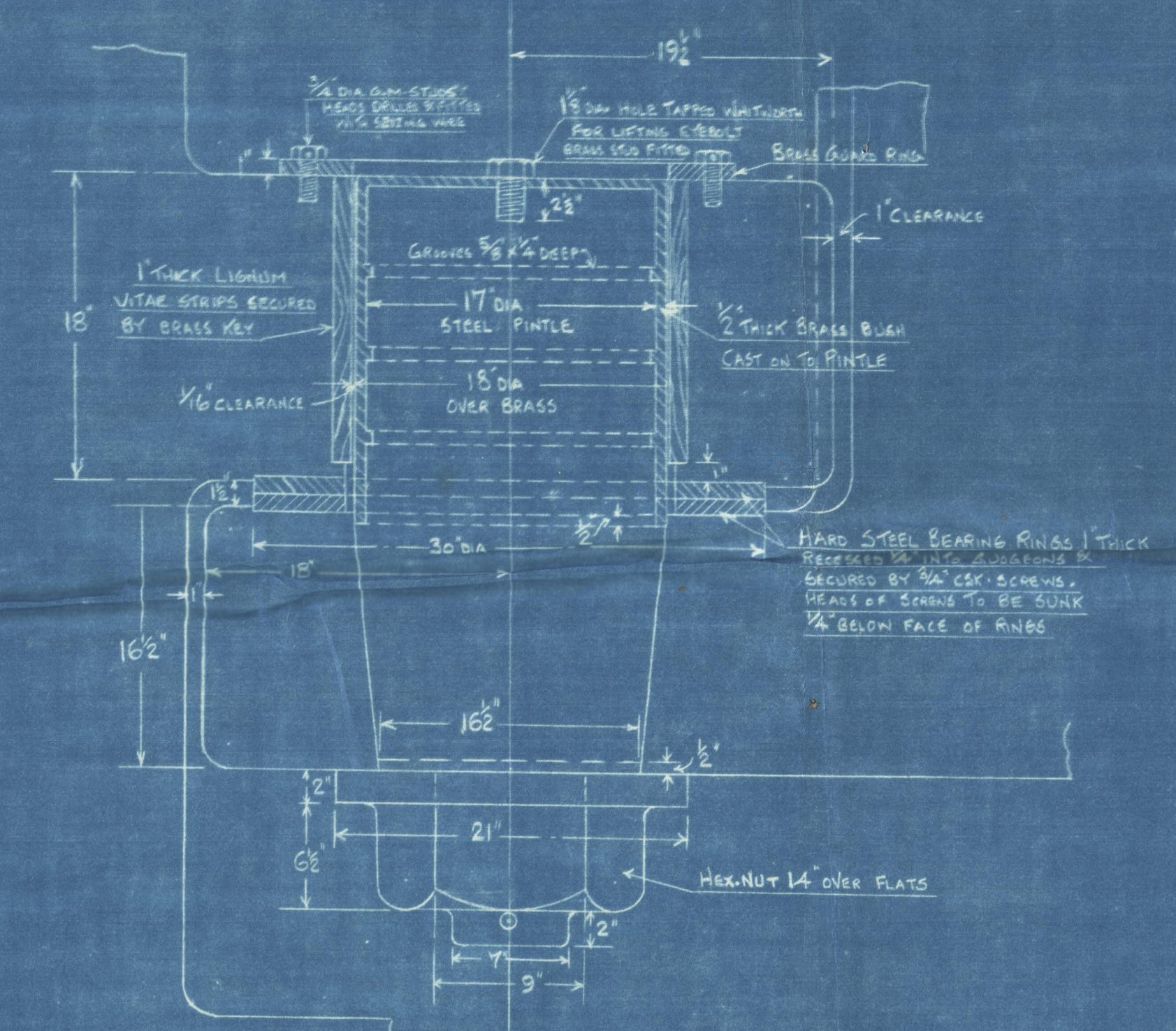
### SCALE $\frac{1}{2}'' = 1' - 0''$

UPPER STOCK OF FORGED STEEL  
LOWER PORTION - CAST STEEL  
TO PASS LLOYD'S TESTS & 100 AL. ALSO BOARD OF TRADE TESTS FOR PASSENGER VESSELS

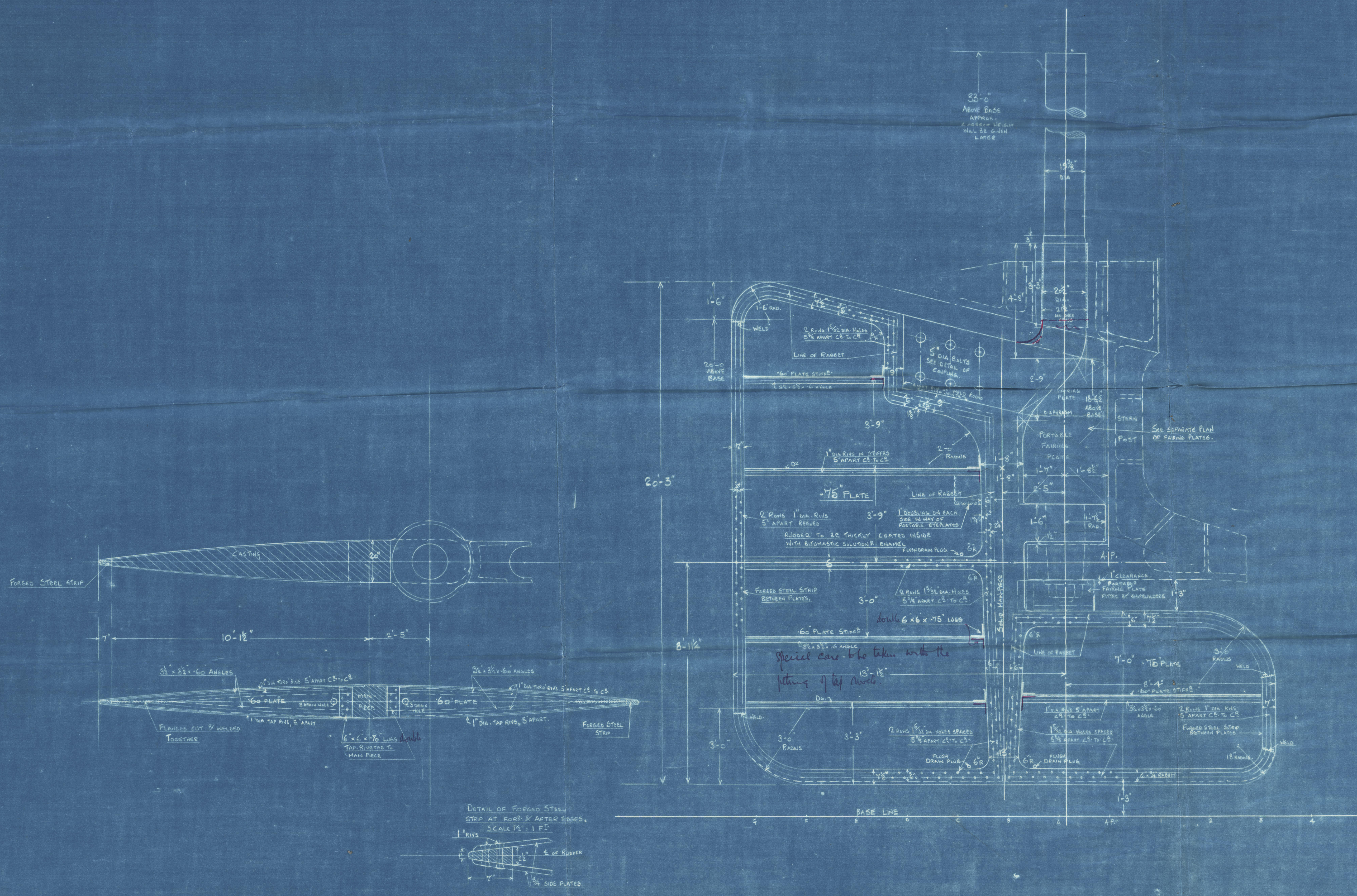
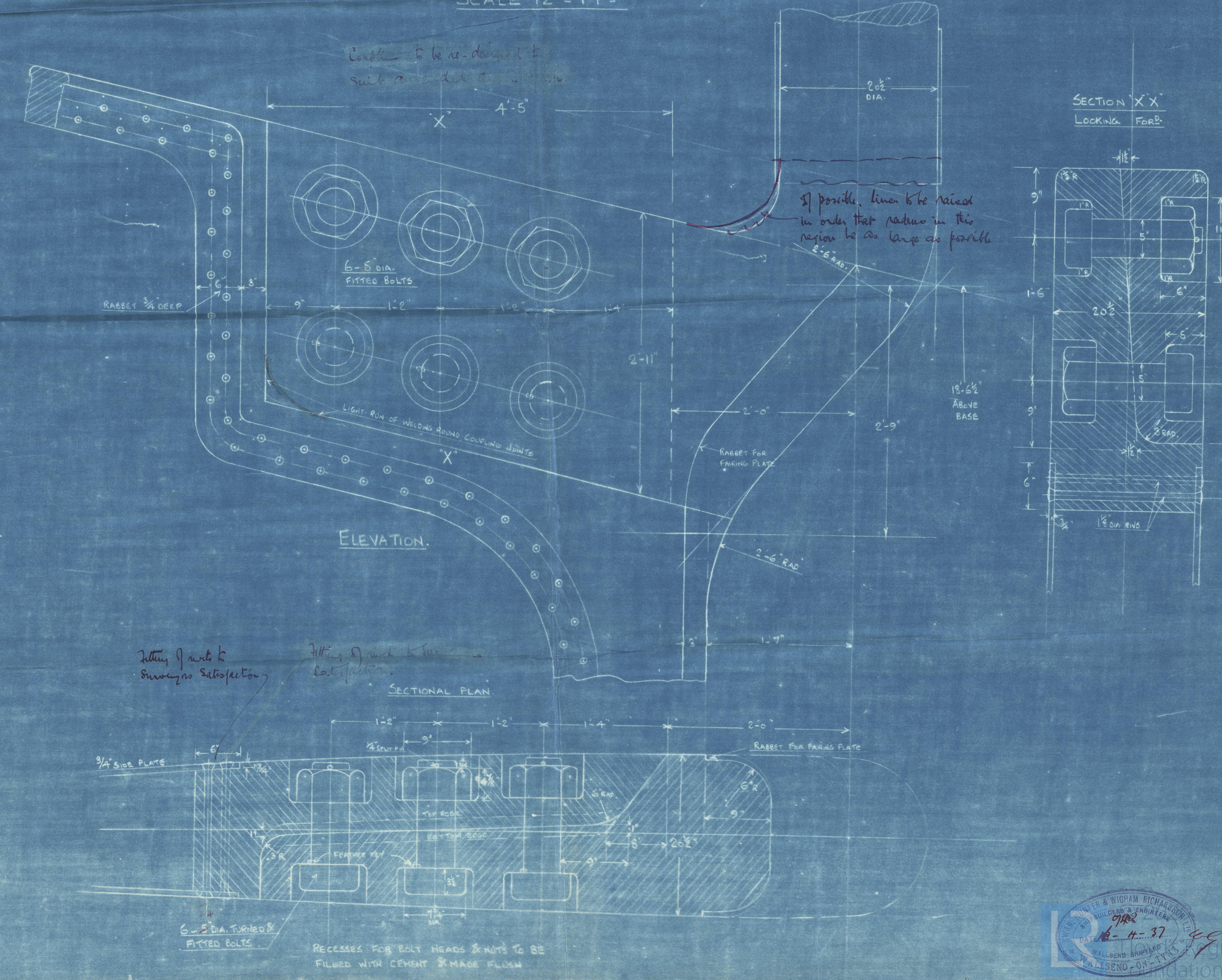
AREA OF RUDDER AHEAD OF PINTLES	=	245.24 SQ. FT.
FORWARD	=	55.30
TOTAL AREA OF RUDDER	=	301.14
C.G. AHEAD OF PINTLES	=	6.71 FT.
FORWARD	=	4.225
LLOYD'S AHEAD OF PINTLES	=	1646
FORWARD	=	225
MODIFIED A & D	=	1421
RULE DIA. OF RUDDER HEAD	=	18 1/2"
INCREASE TO OWNERS REQUIREMENTS	=	1/2"
RUDDER HEAD DIA.	=	19 1/8"

SPEED 19.5 KNOTS.

DETAIL OF PINTLE  
SCALE  $\frac{1}{2}'' = 1' - 0''$



DETAIL OF COUPLING.  
SCALE  $\frac{1}{2}'' = 1' - 0''$



DETAIL OF FORGED STEEL  
STOCK AT RIGID & ARMED EDGES.  
SCALE  $\frac{1}{2}'' = 1' - 0''$



(13)

Swan Hunter's No 1547

Rudder Plan



"DOMINION MONARCH"

1547

L. S. M. V. Dominion  
Monarch

NEWCASTLE ON TYNE.

Report No. 904/40.

M. M.



15620

Lloyd's Register

002947-002955-0227