

SHIP No 39. S. S. "DINOC A". MIDSHIP SECTION.

DIMENSIONS L.B.P. 331'-0" x 47'-9" x 26'-1" MOULDED

SCALE 1/2 INCH = 1 FOOT

ISHERWOOD SYSTEM PATENT

A.M. Boushway
Director of Shipbuilding

EQUIPMENT No	
POOP	31'-0"
BRIDGE	98.5
FORECASTLE	30.0

CARINGS ETC.	71'-0" x 75' x 6"	= 257
LONGITUDINAL No	24411	
	25565	

EQUIPMENT	
2 BOWER ANCHORS STOCKLESS	
1 STREAM	EX STOCK
1 KEDGE	
270 FATHOMS 2 5/8" CHAIN CABLE (PAR MEASURE 20)	
90	4 1/2" STREAM WIRE
120	4 5/8" TOWLINE
2 of 90	2 1/2" STEEL WIRE
2 of 90	0"

NUMERALS

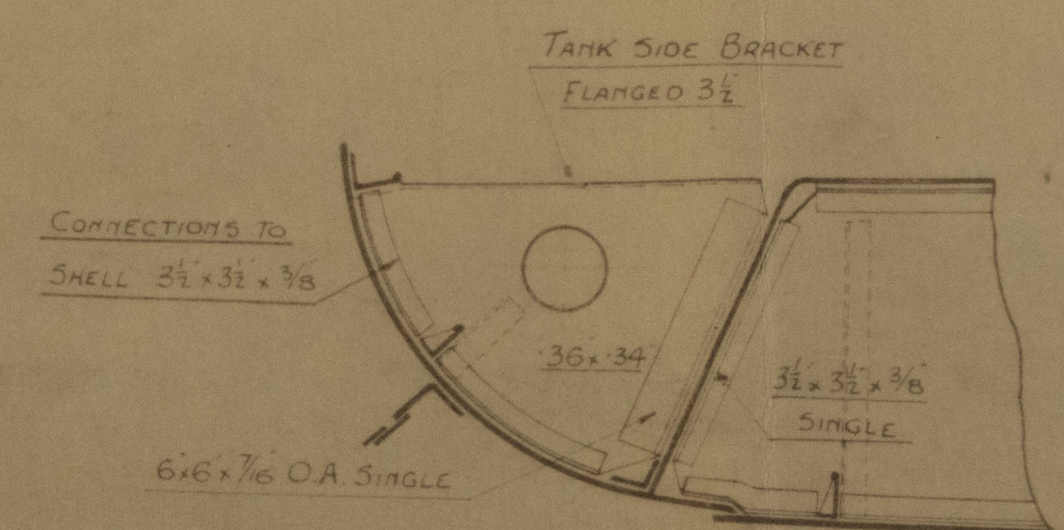
BREADTH	47' 75"
DEPTH	26' 00"
TRANSVERSE No	75' 75"
LENGTH	331' 00"
LONG No	24411 25
5 to UPPER DECK	12' 75"
5 to BRIDGE DECK	9' 88"

MAIN TRANSVERSES

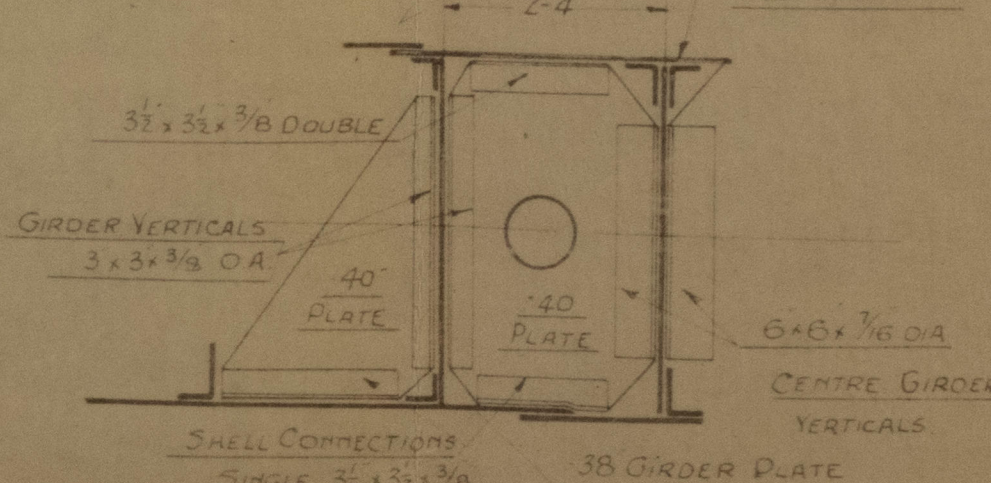
TRANS No	
1916	24' x 46"
1918	27' x 46"
1920	26' x 46"
1922	25' x 46"
1924	23' x 46"
1926	23' x 46"
1928	23' x 46"
1930	23' x 46"
1932	23' x 46"
1934	23' x 46"
1936	23' x 46"
1938	17' x 60"
1940	23' x 46"
1942	23' x 46"
1944	23' x 46"
1946	23' x 46"
1948	23' x 46"
1950	23' x 46"
1952	23' x 46"
1954	23' x 46"
1956	23' x 46"
1958	23' x 46"
1960	23' x 46"
1962	23' x 46"
1964	23' x 46"
1966	23' x 46"
1968	23' x 46"
1970	23' x 46"

FORECASTLE TRANSVERSES 15 x 38

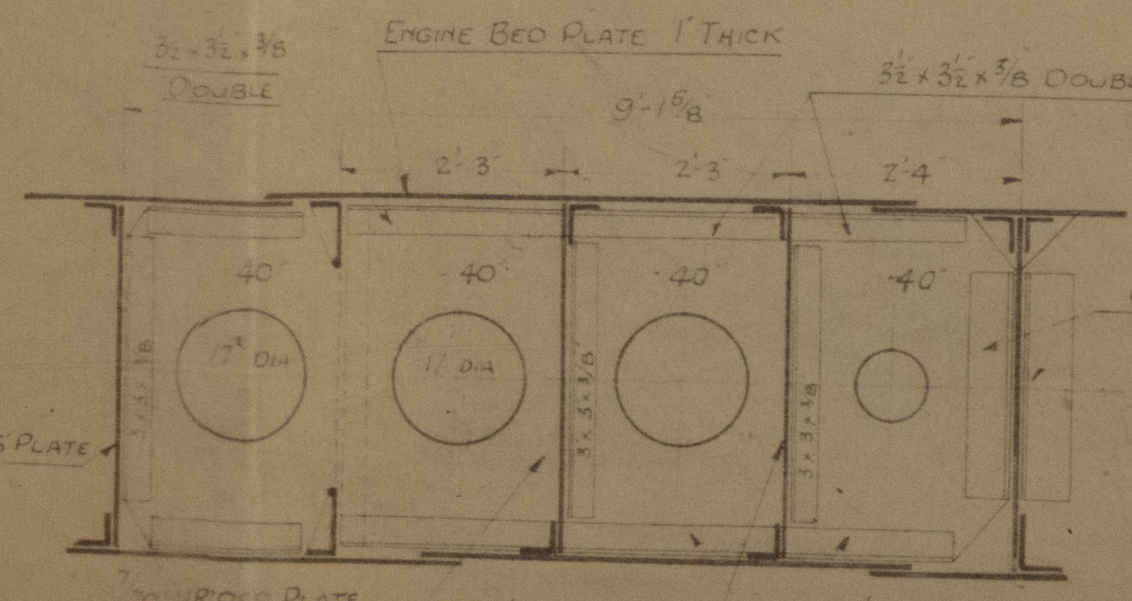
BRIDGE DECK TRANSVERSES 40 AND 36 PLATE



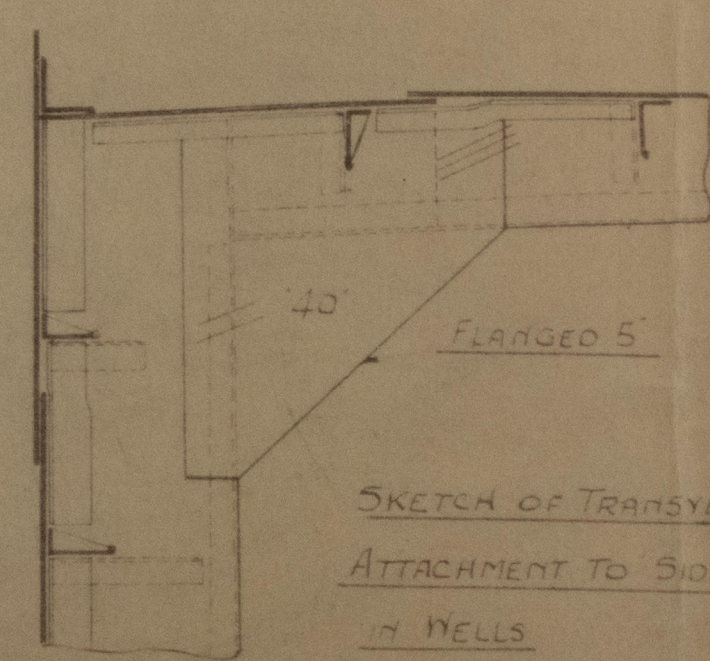
TANK SIDE BRACKET AT INTERMEDIATE FLOORS



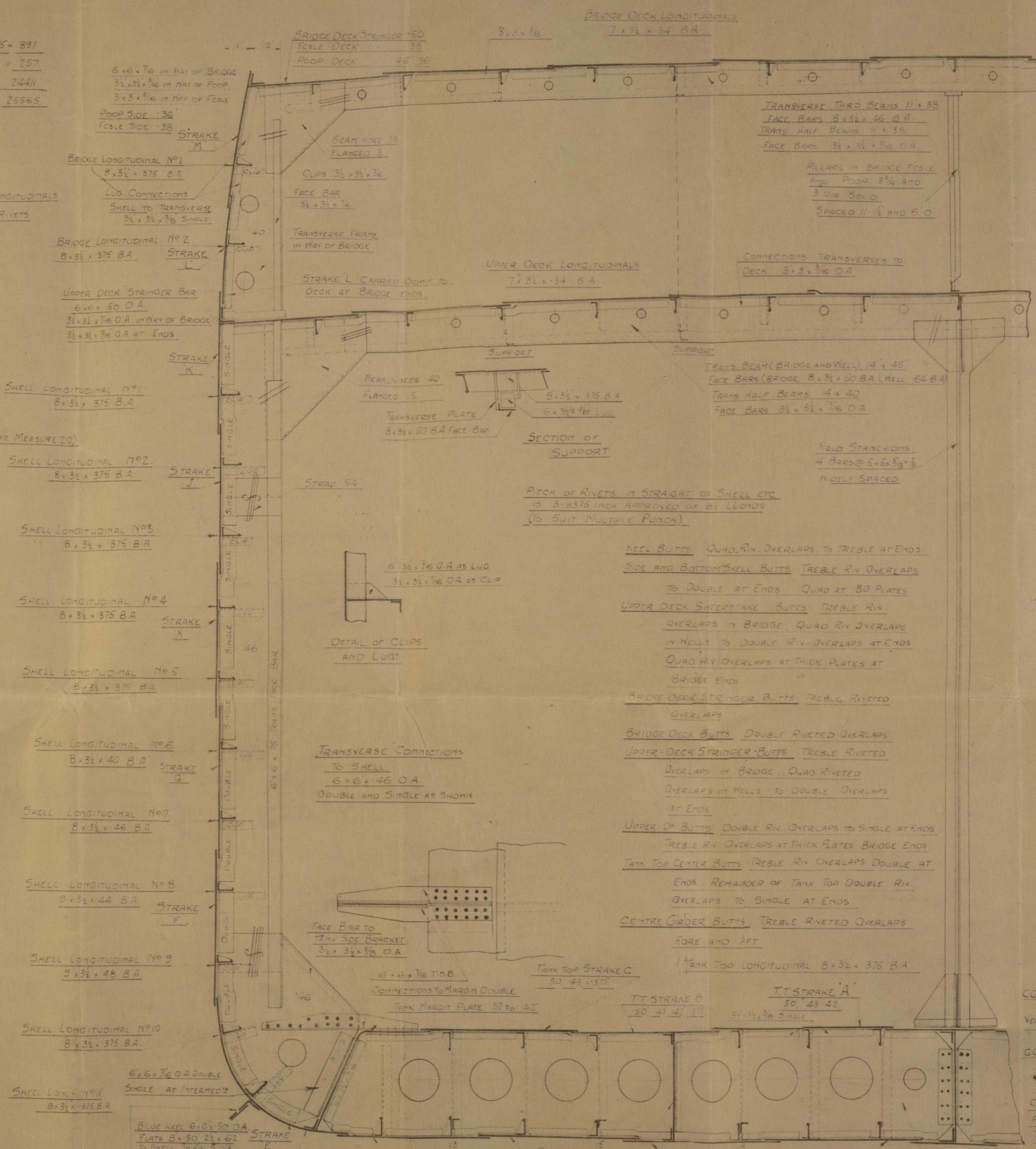
PARTIAL FLOORS UNDER THRUST SEAT



PARTIAL FLOORS UNDER ENGINES



SKETCH OF BRACKET ATTACHMENT OF SHELL LONGITUDINALS TO BULKHEADS



POOP DECK STRAKE 47' 4" x 36" AND 46"
STRAKER BAR 36" x 36" x 1/2"
PLATING 25 SHEATHED OREGON 25

BRIDGE DECK STRINGER 55' x 10"
STRINGER BAR 6" x 6" x 1/2" O.A.
PLATING 50' TO 34'

BRIDGE DECK DOUBLING ROUND COAL HATCH 50"
FORECASTLE DECK STRINGER 41' x 18"
DECK STRINGER BAR 3" x 3" x 5/16"
DECK PLATING 30 BOLLARD DOUBLING 30

UPPER DECK STRINGER 51' x 15' x 62' - 40"
DOUBLING IN WAY OF BRIDGE 48' x 44"
ES AROUND HATCH OPENINGS 60' - 44"
DECK (CLEAR OF BRIDGE) 160' - 14"
(IN WAY OF BRIDGE) 110' - 34"

KEEL PLATES 35' x 90' AMIDSHIPS TAPERED TO 80' FORWARD AND 64' AFT
RIVETING EDGES 1 DOUBLE BUTTS 1 QUADRUPE
STRAKE A 82' x 54' AMIDSHIPS TAPERED TO 54' - 80' FORWARD
AND 54' TO 48' AFT. RIVETS 1 AND 7/8" O.A. MULT PUNCH
STRAKE B 61' x 51' AMIDSHIPS TAPERED FORWARD 51' - 80'
AFT 16' - 50' RIVETS 7/8" O.A. MULT PUNCH
STRAKE C 61' x 51' AMIDSHIPS TAPERED FORWARD 51' - 80'
AFT 54' - 50' RIVETS 7/8" O.A. MULT PUNCH
STRAKE D SIMILAR TO STRAKE C
STRAKE E 85' x 54' AMIDSHIPS TAPERED FORWARD 54' - 80'
AFT 54' - 50' RIVETS 7/8" O.A. MULT PUNCH
STRAKE F 66' x 54' AMIDSHIPS TAPERED FORWARD 54' - 50'
AFT 54' - 46' RIVETS 7/8" O.A. MULT PUNCH
STRAKE G 60' x 54' TAPERED FORWARD 44' AFT 46' RIVETS 7/8" M.P.
STRAKE H 60' x 54' 3' - 42' FORWARD AND 50' AFT RIVETS 7/8" M.P.
STRAKE J 60' x 54' 16' - 42' AT ENDS RIVETS 7/8" M.P.
SHEERSTRAKE K 56' x 52' - 88' TAPERED TO 41' AT ENDS
RIVETS 1 AND 7/8" MULTIPLE PUNCH
STRAKE L 43' x 52' TO 38' AND 36' AT ENDS
STRAKE M 54' x 54' FOSLE 38 POOP 36
Boss Plate 68

CO. RP BARS 6" x 6" S.
AND 31' x 31' x 50" DOUBLE
VERTICAL BARS
6" x 6" x 3/16"
GG BOTTOM BARS
6" x 6" x 60" SINGLE
31' x 31' x 50" DOUBLE
CENTRE GIRDER
PLATE 42' x 48'
TAPPED 42' AND 38'

FLOOR PLATES 42' x 40' FOR 36L
IN WAY OF ENDS 50'
FLOORS AT ENDS OF VESSEL 34' - 40'
DEPTH OF FLOORS AT 1/2 THE HALF
BREADTH AMIDSHIPS 35 3/8"

INTERCOSTAL SIDE GIRDER
46' - 40' 375' 36' 34'
VERTICAL BARS 3" x 3" x 3/8" O.A. SINGLE
TOP & BOTTOM 51' x 51' 50' AND 375'

Bottom LONGITUDINALS 8" x 36' x 375' B.A.
4" x 3" x 50' COMPENSATION BARS IN LONG 11' 51"
EXTENDING AFT TRANS 14' AND 54'

TOP MIDDLE STRAKE
54' - 46' - 44'
40' AND 36'

31' x 31' x 3/8" DOUBLE
GIRDER VERTICALS
3" x 3" x 3/8" O.A.
40' PLATE
6" x 6" x 1/2" O.A.
CENTRE GIRDER
VERTICALS
38" GIRDER PLATE
SHELL CONNECTIONS
SINGLE 31' x 31' x 3/8"

ENGINE BED PLATE 1" THICK
31' x 31' x 3/8" DOUBLE
9' - 16" 8"
2' 3" 2' 3" 2' 4"

40" PLATE
11" O.A.
38" GIRDER PLATE
51' x 31' x 375' SINGLE

40' FLANGED S

SKETCH OF TRANSVERSE BEAM
ATTACHMENT TO SIDE TRANSVERSES
IN WELLS

"Colac"
5/s "Dinoga"

h.l.w. Govt Dockyard
No. 39.

h.wc h.l.w. 1207.

Midship Section



© 2020

Lloyd's Register
Foundation

007991-003005-0020