

RE-ASSIGNMENT.

LL4C/D To B/T. ✓
LL4D To OWNERS. ✓THE BRITISH CORPORATION REGISTER OF
SHIPPING AND AIRCRAFT
SURVEY FOR FREEBOARD

486/2.

STEAMER, TANKER, SAILER: S.S. "AMARAPOORA" ~~WITH~~ TIMBER DECK CARGO
~~WITHOUT~~

Nationality BRITISH Builders' Name and No. of Ship Wm Denny & Bros Ltd
 Port of Registry GLASGOW Owner: - M.O.T. To. 1062.
 Official Number 144211. Managers: Brit & Bernese S.N. Co Ltd &
 Gross Tonnage 9300 Bermah Steamship Co. Ltd.
 Date of Build 7/1920. Port and Date of survey Glasgow Liverpool.
 Name of Surveyor W.J. Hay. A.M. Kennedy.
 Particulars of Classification B.S. X. Names of Sister Ships "PEGU"

Type of Superstructures Combined Poop & Bridge & Forecastle.

Trade of Ship Hospital Ship. Displaced persons emigrant ship.

Service Endorsement if any When more than 12 passengers are carried the
freeboard of the ship shall be governed by the terms
of the Passengers and Safety certificate. etc.

ALL SEASON.

SUMMER FREEBOARD recommended amidships from centre of disc to top of deck line, (.....wood.....steel)

TROPICAL FRESH WATER LINE above centre of disc	Corresponding Freeboard
FRESH WATER LINE " " " <u>5 1/2"</u>	<u>9-10 1/2"</u> <u>10-6 1/2"</u>
TROPICAL LINE " " " -	<u>10-1 9-5"</u>
WINTER LINE below " " -	-
WINTER NORTH ATLANTIC LINE " " " -	-

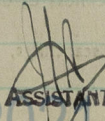
SUMMER TIMBER FREEBOARD recommended amidships from top of deck line

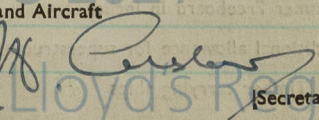
TROPICAL FRESH WATER Timber line above L.S.	Corresponding Freeboard
FRESH WATER " " " "	" "
TROPICAL " " " "	" "
WINTER " " below " "	" "
WINTER NORTH ATLANTIC " " " "	" "

Number of years recommended for load line certificate

The scantlings and protective arrangements being in accordance with the Load Line Rules it is submitted that the freeboards be assigned

Passed at a meeting of the Committee of Management of the British Corporation Register of Shipping and Aircraft

on the 3rd April 1940

 Chief Surveyor
 ASSISTANT CHIEF SURVEYOR


 Lloyd's Register
 Foundation
 Secretary

003013-003017-0047/8

COMPUTATION OF FREEBOARD

Length on summer load line **465' - 0** Moulded Breadth **59' - 0** Moulded Depth **33' 4"** Depth of Keel

Moulded displacement (ex bossing) at moulded draught of 85 per cent. of moulded depth

Co-efficient of fineness for use with tables $\frac{\Delta \times 35}{L \times B \times D \times .85} =$

Displacement and tons per inch immersion in salt water at summer load line

Moulded depth

Deduction for Fresh Water $\frac{\Delta}{40 T} =$ inches

Stringer Plate

Round of Beam Correction

Sheathing on exposed deck T $(\frac{L-S}{L})$

Ships Round of Beam inches

Rise of floor (in sailers)

Standard Round of Beam $\frac{B \times 12}{50}$

Depth for Freeboard (D)

Difference

Table Depth

Restricted to

Depth Correction

Correction $\frac{\text{Difference}}{4} \times (1 - \frac{E}{L}) =$

If restricted by superstructures

	Enclosed Length	Length of Overhang	Height	Mean Covered Length (S)	Height Correction	Effective Length (E)
Poop						
Raised Quarter Deck						
Bridge		F				
		A				
Forecastle						
Trunk Aft						
„ Forward						
Tonnage Opening Aft						
„ „ Forward						
Totals						

Standard Height of Superstructure

„ „ R.Q.D.

Percentage covered S/L =

„ „ E/L =

„ from Table line A, B, (corrected for absence of forecastle if required)

Percentage from Table by interpolation for Bridge

less than .2L if required =

Deduction =

Percentage from Table for Tankers (or Timber ships) =

Deduction =

Station	Actual Sheer	Standard Sheer	Effective Sheer	S.M.	Product
A.P.				1	
$\frac{1}{8}$ L from A.P.				4	
$\frac{1}{8}$ L from A.P.				2	
Amidships				4	
$\frac{1}{8}$ L from F.P.				2	
$\frac{1}{8}$ L „ „				4	
F.P.				1	
				18	

Mean Actual sheer aft = „ Standard „ „

Mean Actual sheer forward = „ Standard „ „

Length of enclosed superstructure forward of amidships = Length of Ship

Length of enclosed superstructure aft of amidships = Length of Ship

Sheer Correction = Difference $\times (75 - \frac{S}{2L}) =$

Effective Mean Sheer =

Standard „ „ .05L + 5 =

If limited on account of midship superstructure =

Difference

„ to maximum allowance of $1\frac{1}{2}$ ins. per 100 ft. =

TABULAR FREEBOARD corrected for flush deck if required = **91.75**

Correction for co-efficient = $\frac{1.4285}{1.36}$

= **96.37** DRAUGHTS AND SEASONAL CORRECTIONS

	+	-
Depth correction	7.43	-
Deduction for superstructures	-	18.76
Sheer correction	-	2.54
Round of Beam correction	.17	-
Correction for thickness of deck amidships	-	1.23
Other corrections, scantlings, etc.	45.06	-
	52.66	22.53
		430.13

	Sailer, Tanker, Steamer	Timber
Depth to Freeboard Deck in feet	33.375	
Summer Freeboard in feet	10.541	
Moulded Draught (d)	22.834	(d1)
Addition for Keel	.167	
Extreme draught	23.001	

Deduction for Tropical and addition for Winter freeboard $d/4 =$ ins.

Addition for Winter North Atlantic (if required) = ins.

Deduction for Tropical Timber Freeboard $\frac{d}{4} =$ ins.

Addition for Winter „ „ $\frac{d}{3} =$ ins.

„ „ N.A. Timber Freeboard (if required) = ins.

ALL SEASONS.

Summer Freeboard in Inches = **126.50**

Additional allowance for superstructures on

Timber carrying ships =

Summer Timber Freeboard in inches =

Lloyds Register Foundation

0047 2/8

THE BRITISH CORPORATION REGISTER OF SHIPPING AND AIRCRAFT

SURVEY FOR FREEBOARD CONDITIONS OF ASSIGNMENT

SHIPS NAME **AMARAPURA.**OFFICIAL NUMBER **144211**Nationality and Port of Registry **BRITISH. GLASGOW.**

PARTICULARS OF SUPERSTRUCTURES, TRUNKS, CASINGS, DECKHOUSES

	Coaming	Plating	Stiffeners	Spacing	End Attachments	No. and size of Openings	Height of Sills	Height of Casings
Poop Bulkhead								
R.Q.D. "								
Bridge Aft Bulkhead								
" Forward "	.5	.44	10x3 1/2 x 46 BA.	27"	leged.	2 @ 5'0" x 3'0"	18"	-
Forecastle Bulkhead	.31	.31	3x3 x 40	35"	-	2 @ 4'0" x 3'0" 4 @ 4'6" x 3'1"	20" 15"	-
Trunk, Aft								
" Forward								
Exposed Machinery Casings on } Freeboard or R.Q. Decks								
Exposed Machinery Casings on } superstructure decks								
Machinery Casings within Super- structures not fitted with Cl. 1 closing appliances								
Deckhouses on flush deck ships								

PARTICULARS OF CLOSING APPLIANCES (state if capable of being manipulated from both sides)

Poop Bulkhead	<i>NO POOP Now</i>
R.Q.D. "	<i>✓</i>
Bridge Aft Bulkhead	<i>✓</i>
" Forward "	<i>Hinged Steel W.T. Door. (1P. 1S). Same 21/2/52</i>
Forecastle Bulkhead	<i>Weatherboards in channels riveted to bulk. 7 bolted plate.</i>
Exposed Machinery Casings on } Freeboard or R.Q. decks	<i>bolted plate and portable ringed wood door. Same 21/2/52</i>
Exposed Machinery Casings on } superstructure decks	
Machinery Casings within super- structures not fitted with Cl. 1 Closing Appliances	
Deck houses on Flush Deck ships	

PARTICULARS OF FREEING ARRANGEMENTS

	Length of Bulwark	Height of Bulwark	No. and size of Freeing Ports each side	Area each side	Rule Area
After Well	<i>✓</i>	<i>✓</i>	<i>✓</i>	<i>✓</i>	<i>✓</i>
Forward Well	90'-8"	4'	<i>Same 21/2/52.</i> 4 @ 36" x 20"	20 sf	181.5

State fore and aft position and height above }
deck to bottom of port, for each port

After Well

Forward Well

As sketch. 9" sills. Same

State whether freeing ports are fitted with shutters, bars or rails, and give particulars

*Hinged Steel Shutters.
& Bars.*

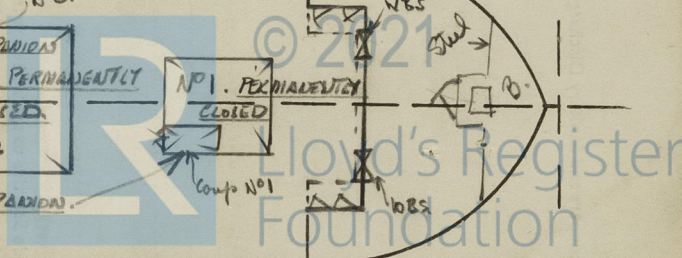
Give particulars of freeing port area, etc., on superstructure decks

open Rails.

Foundation

0047 3/8

81 4 1007



PARTICULARS OF ALL HATCHWAYS ON FREEBOARD AND SUPERSTRUCTURE DECKS

0047
5/8

Number and description of Hatchway from forward		No 1.	No 2.	No 3+4.	No 5.	No 6.	No 7.	Bridge Deck 2 off.	Coal Hatch	Fore Hatch	Odd Hatch
Dimensions of Hatchway								9'0" x 6'0"			Pop. 3' x 2'6"
COAMINGS	Height above { steel { deck { wood {							18"			18"
	Thickness { sides { ends							.5			.5
	Stiffeners										
Brackets or Stays											
HATCH BEAMS	Number										
	Spacing										
	Scantling and Sketch										
Bearing Surface and thickness of carriers or sockets											
FORE AND AFTERS	Number										
	Spacing										
	Unsupported lengths										
	Scantling and Sketch										
Bearing Surface and thickness of carriers or sockets											
HATCH COVERS	Material							White pine			W. P.
	Thickness							3"			3"
	How Fitted							F&A.			F&A.
	Bearing Surface							3 1/2"			3"
Spacing of Cleats								-			24"
Number of Tarpaulins								3			3

PERMANENTLY CLOSED
WOOD COVERS CAULKED
& PAINTED WITH MARINE
ALUE

as previously.

plated over with
exception of 9'0" x 6'0"
coaming 3 1/2" x 3 1/2" x 3/8"

as previously.

White pine
3"
F&A.
3 1/2"
-
3

White pine
3"
F&A.
3"
24.
3

Are tarpaulins in good condition and in accordance with rule requirements?

Are lashings provided in accordance with rule requirements?

Are wood fore and afters steel shod at all bearing surfaces?

Are battens and wedges efficient and in good condition?



© 2021

Lloyd's Register
Foundation

Give full particulars of the following :—

Fiddley, Funnel and Vent Coamings, Engine Room skylight and other openings in Machinery Casing tops and their means of closing (state height of coamings, type of fiddley covers, and if these are permanently attached in their proper positions)

As previously.

Flush Bunker Scuttles on freeboard and superstructure decks (state material, type of joints, etc., and if secured by hinge or permanent chain attachment)

Companionways on freeboard and superstructure decks (state material, height of doorway sills, type of doors, and if these can be closed and secured from both sides)

On Prop steel house 18" coamings strong steel doors, both sides.
~~For additional Companionways on Extended Bridge Deck.~~

38 Rating 18" X 18" Double Hinged Hat doors.

N ^o 4	Frames 49-50.	single	Steel	Door	opening	5'6" x 2'0"	both sides.
5	40-41 1/2	Double	Steel			5'6" x 4'0"	(Strongbow fitted)
6	27 1/2 - 30 1/2		wood				
7		Single	wood			5'6" x 2'0"	
1	On No 1 Hatch	Double	Steel			5'0" x 4'0"	(Strongbow fitted)
2	on No 2						
3							

Ventilators in exposed positions on freeboard, raised quarter and superstructure decks to spaces below freeboard decks and fully enclosed superstructures enclosed by Class 1 appliances (state height of steel coamings, pitch of rivets in deck connection, type of closing arrangements)

As previously. Vents previously in aft well carried up thro' new extension deck Coamings 3'0 Wood Plugs & Canvas Covers.

~~Additional~~

~~7~~ Airpipes in exposed positions on freeboard, raised quarter and superstructure decks (state height to opening and if satisfactory closing arrangements are provided)

*aft well Air pipes extended to Bridge Deck.
height 18" - Wood Plugs & Canvas Covers.
Fore well. 51" and 36" canvas covers.
Forecastle goosenecks 16" canvas covers.
Bridge. goosenecks. 18" canvas covers.*



© 2021

Lloyd's Register
Foundation

0047 6/8

SUPPLEMENTARY REQUIREMENTS FOR STEAMER CARRYING TIMBER DECK CARGOES

Do Superstructure and Machinery Casings comply with rules?

Is provision made for protection of steering gear?

Is emergency steering gear provided?

Are efficient sockets and eyes for lashings provided and properly spaced?

State particulars of longitudinal subdivision in double bottom

State particulars of Bulwarks and Rails

Particulars of any Special Features in the construction of the Ship

See report dated 6 Dec 1939 regarding conversion to hospital ship.

Endorsement at first survey and at surveys for Renewal of Certificate:—

The fittings and appliances are in accordance with the particulars shown in the form and are in good condition



© 2021

Lloyd's Register
Foundation

0047 8/8