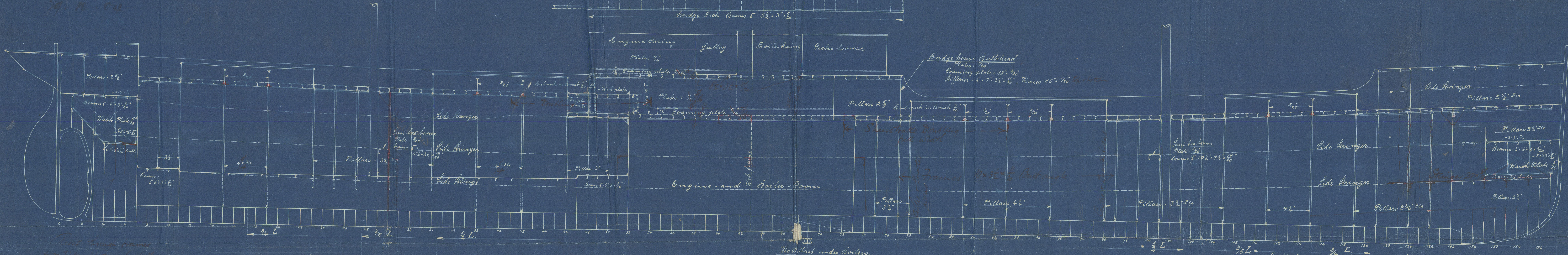
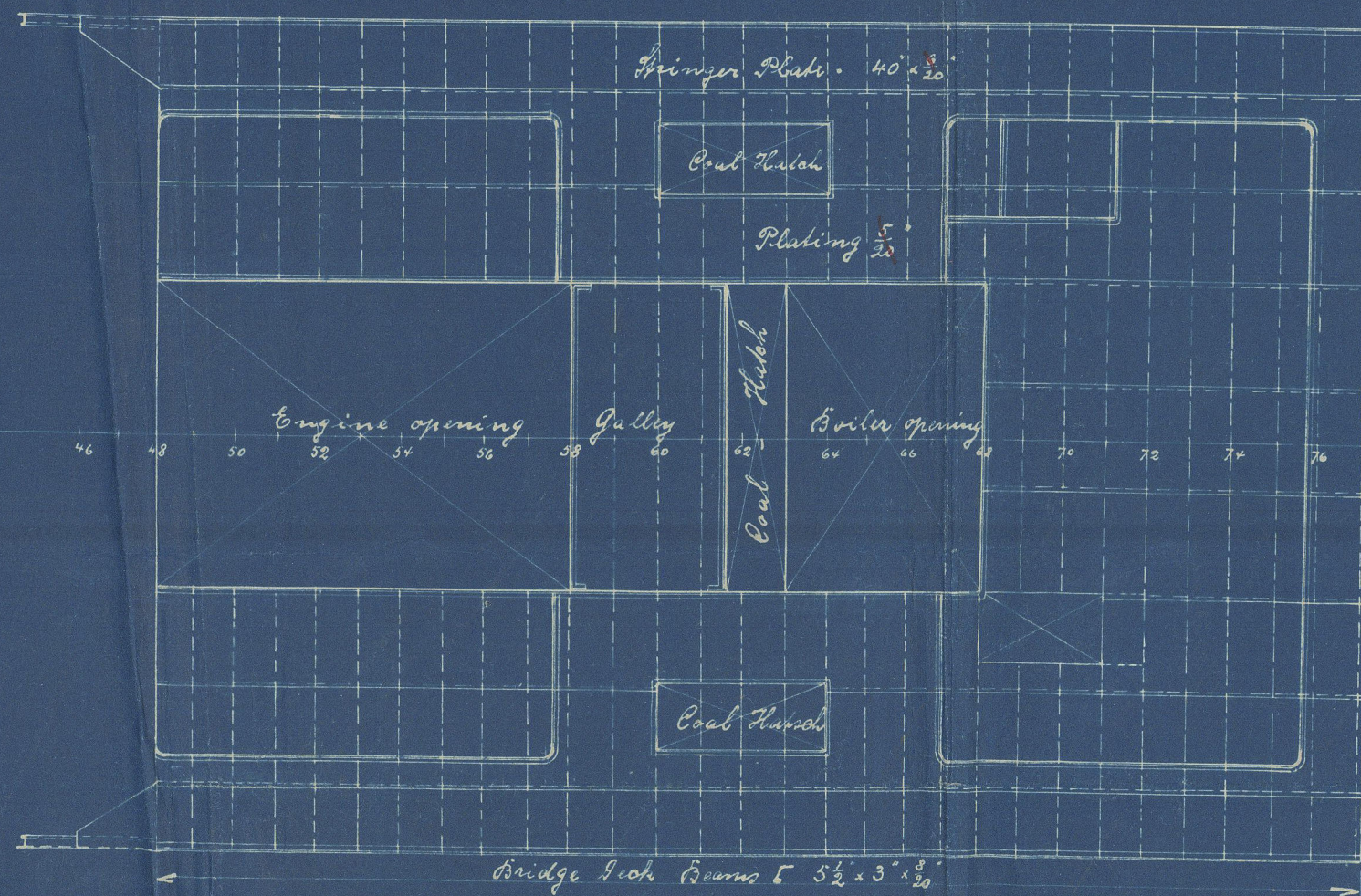
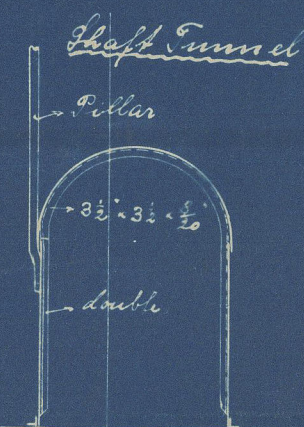
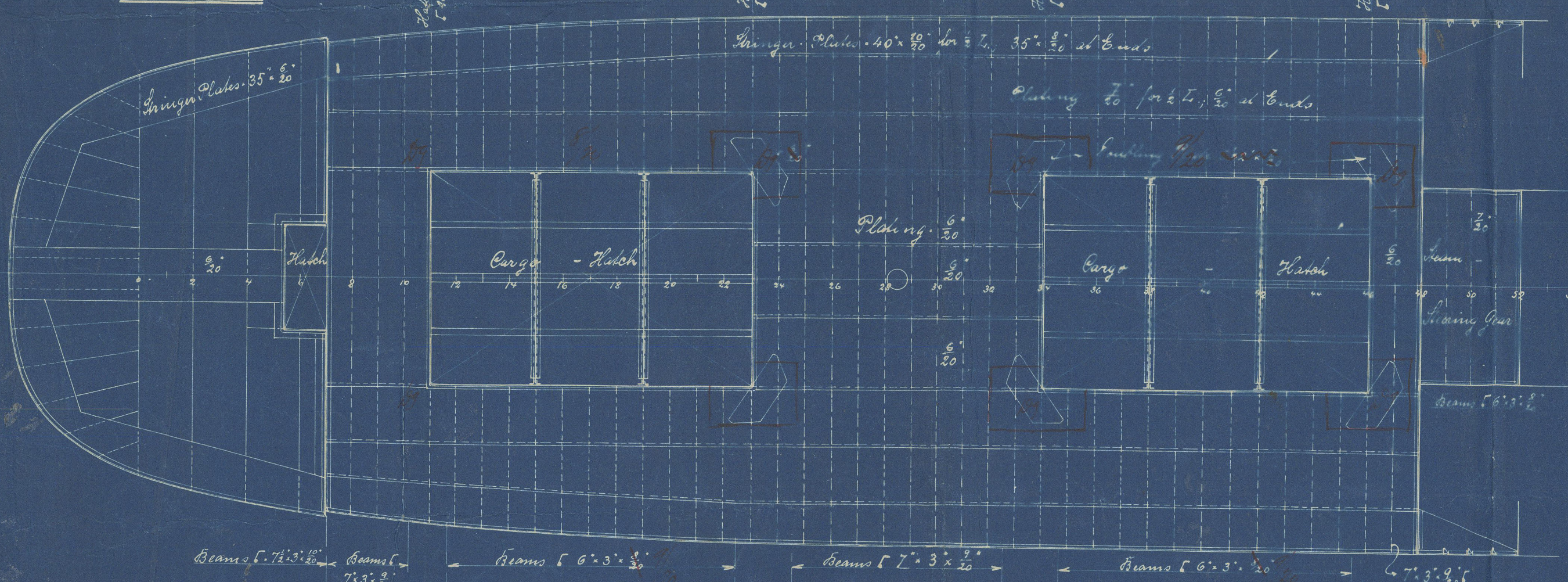


BRIDGE DECK

23-4-04
13-5-04
5-7-04
13-7-04
31-10-04
19-11-04



POOP DECK



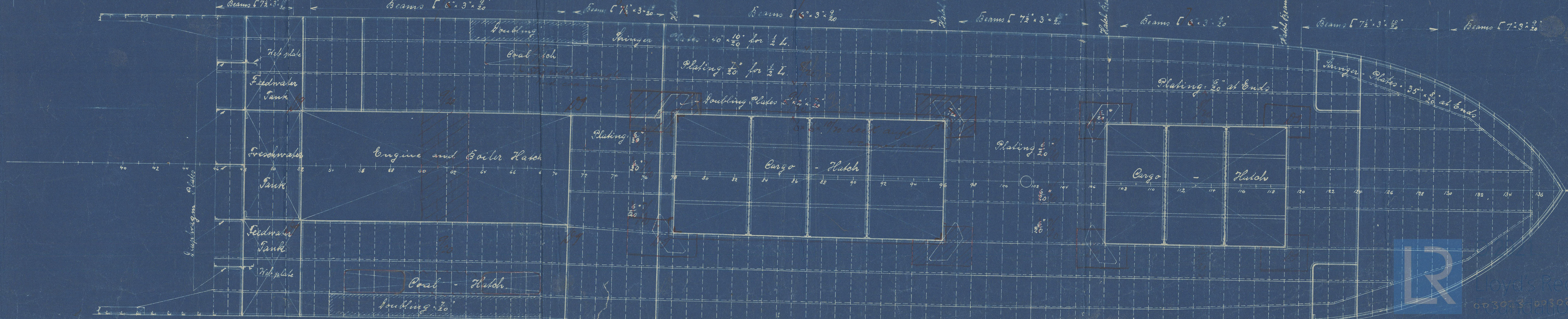
Class + 100 A.I. Lloyd's Register.
Raised Quarter Deck
Built of steel

S.S. 96° 546.

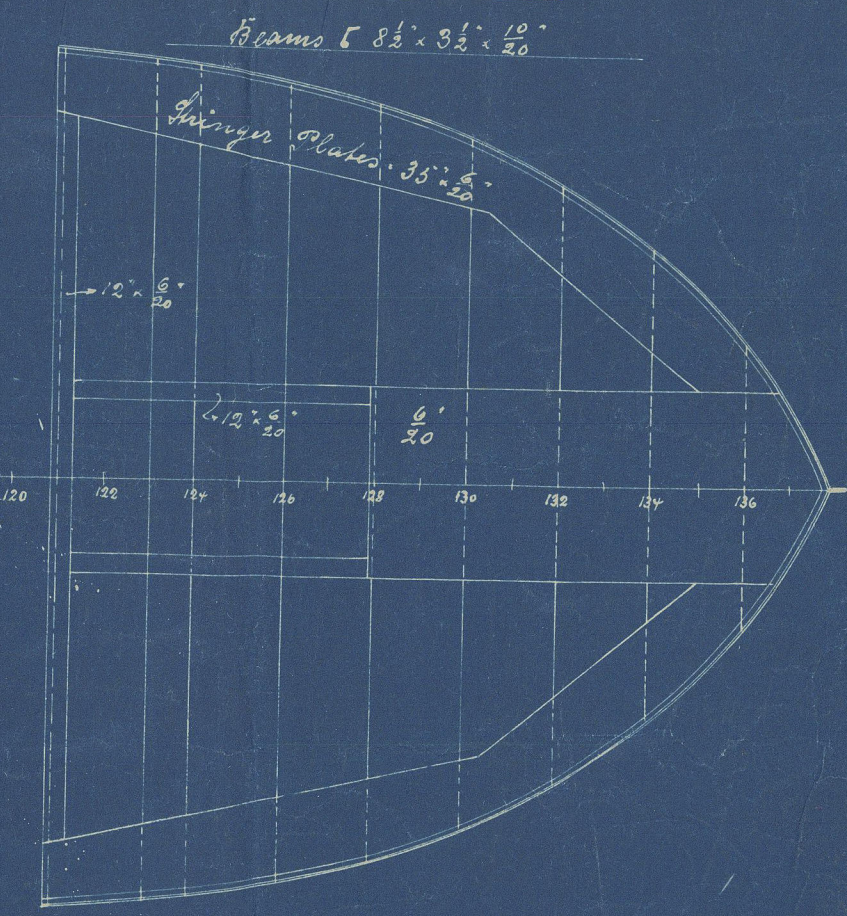
Dimensions:
Length between Perpend. 84.00 m 275'-0" engl.
Breadth moulded 12.50 41'-0"
Depth moulded 6.25 20'-6"

Statiner Oderwerke
Aktiengesellschaft
für Schiff- und Maschinenbau
See corrected, Paris

MAIN DECK



FORECASTLE DECK



Lloyd's Register
003003, 003023-0007



© 2021

Lloyd's Register
Foundation

003023-003028-0001



© 2021

Lloyd's Register
Foundation



003023-003028-0007



© 2021

Lloyd's Register
Foundation

Handy 12 234

Elwine Koppew
Stn 234.

Profile Deck



003023-003028-0007



© 2021

Lloyd's Register
Foundation