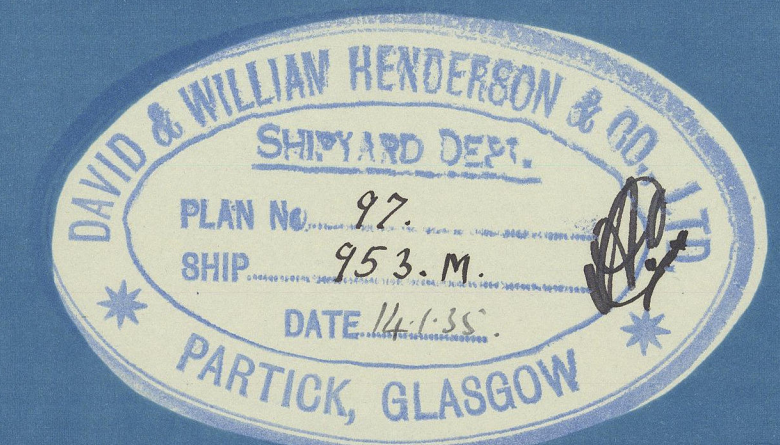


RUDDER

Nº 953 M



SCALE $\frac{3}{4}$ " = 1 FOOT

RUDDER MAINPIECE - FORGED STEEL

TO PASS LLOYDS TESTS & 100A1.

AREA OF RUDDER ABAFT $\frac{1}{2}$ OF STOCK 123.2 $\frac{1}{2}$

FORP " " 36.8 $\frac{1}{2}$

LLOYDS A & D ABAFT $\frac{1}{2}$ OF STOCK 123.2 x 3.52 = 433

" " FORP " " 36.8 x 1.048 = 38

MODIFIED A & D = 395

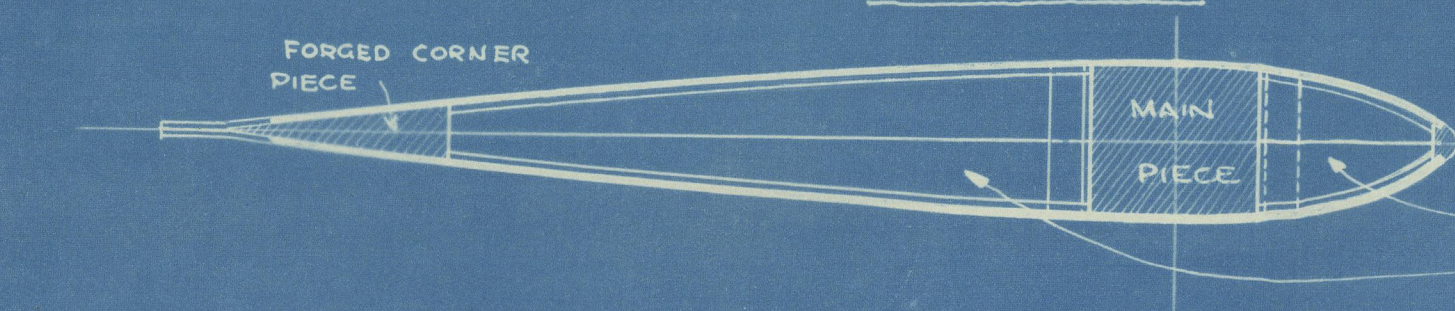
SPEED 13 KNOTS

LLOYDS DIA. OF STOCK 9 $\frac{3}{4}$ "

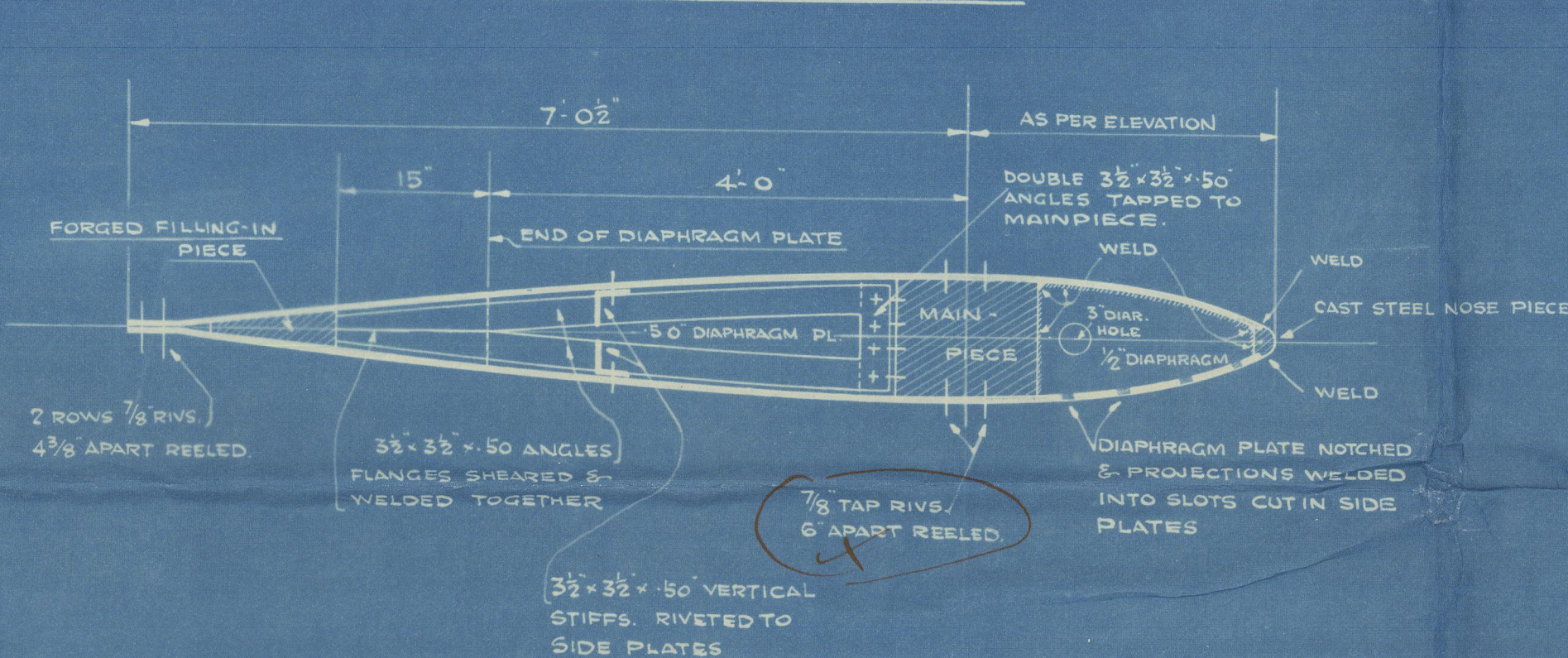
OWNERS DIA. OF STOCK 10"

FOR CAST STEEL NOSE PIECE
SEE SEPARATE PLAN

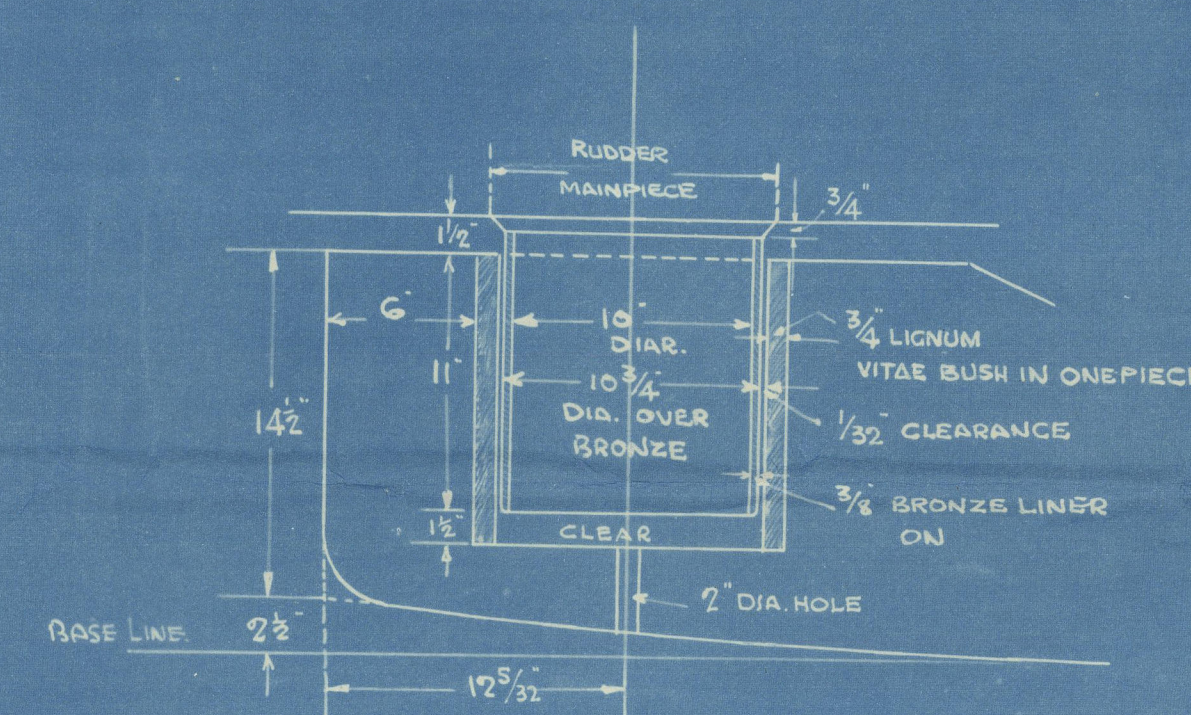
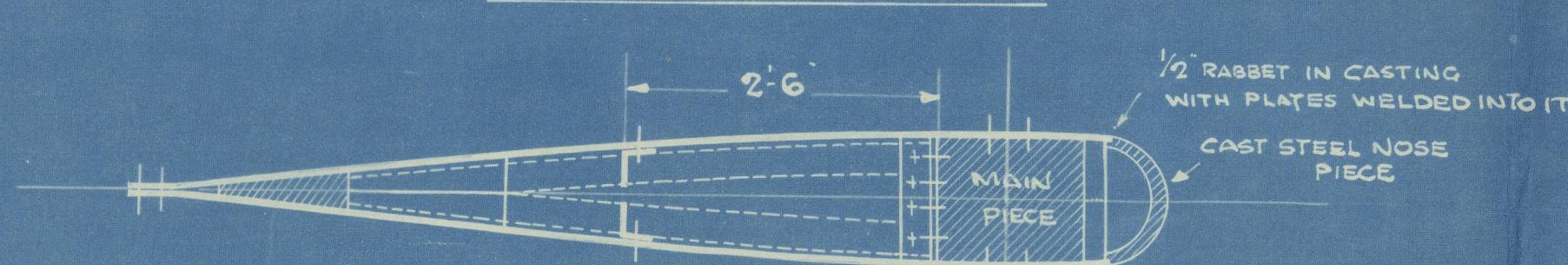
SECTION AT TOP OF RUDDER
BOTTOM SIMILAR



SECTION THRO' RUDDER AT A-B

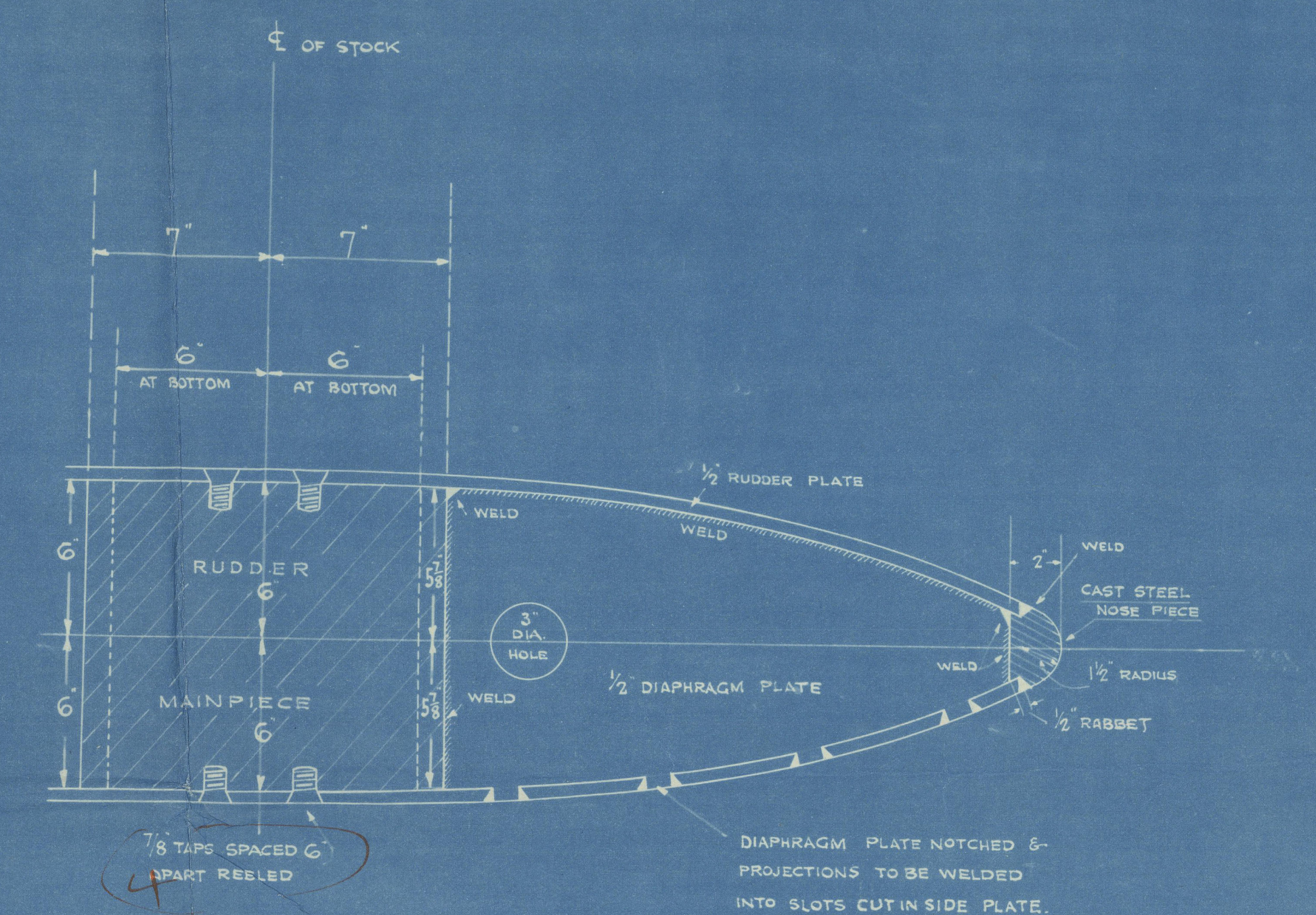
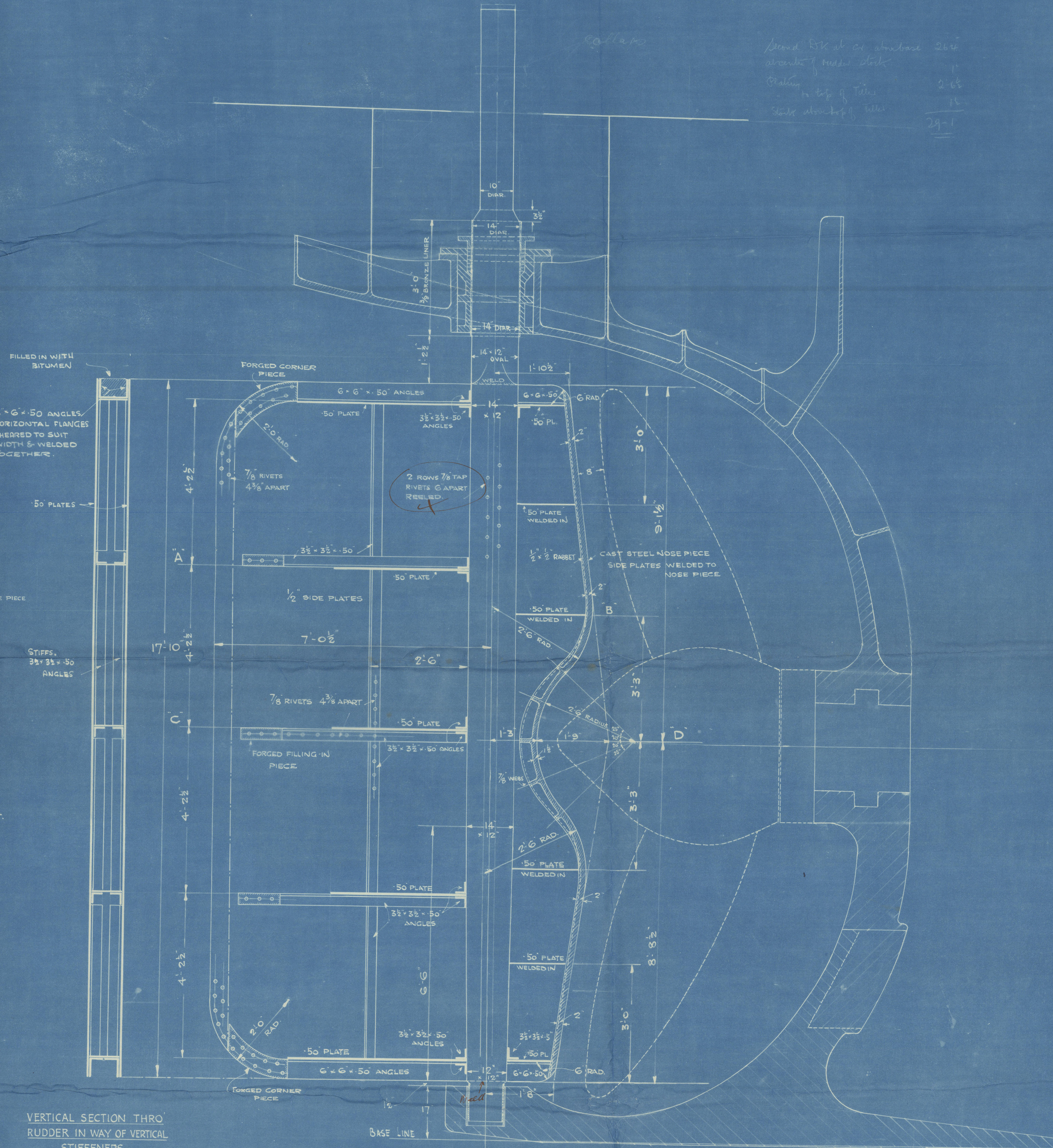


SECTION THRO' RUDDER AT C-D



DETAIL OF BOTTOM BEARING
SCALE $\frac{1}{2}$ " = 1 FT.

VERTICAL SECTION THRO'
RUDDER IN WAY OF VERTICAL
STIFFENERS



METHOD OF FITTING DIAPHRAGM PLATES
IN FORWARD PART OF RUDDER

APPROVED
LLOYDS REGISTER OF SHIPPING
H. Henderson
14.1.35

Glasgow

Messrs. D. & W. Henderson & Co. Ltd

Yard No 953M.

Rudder Plan.

Inven. for
GLASGOW REPORT No. 56140



© 2021

Lloyd's Register
Foundation

003023-003028-0044