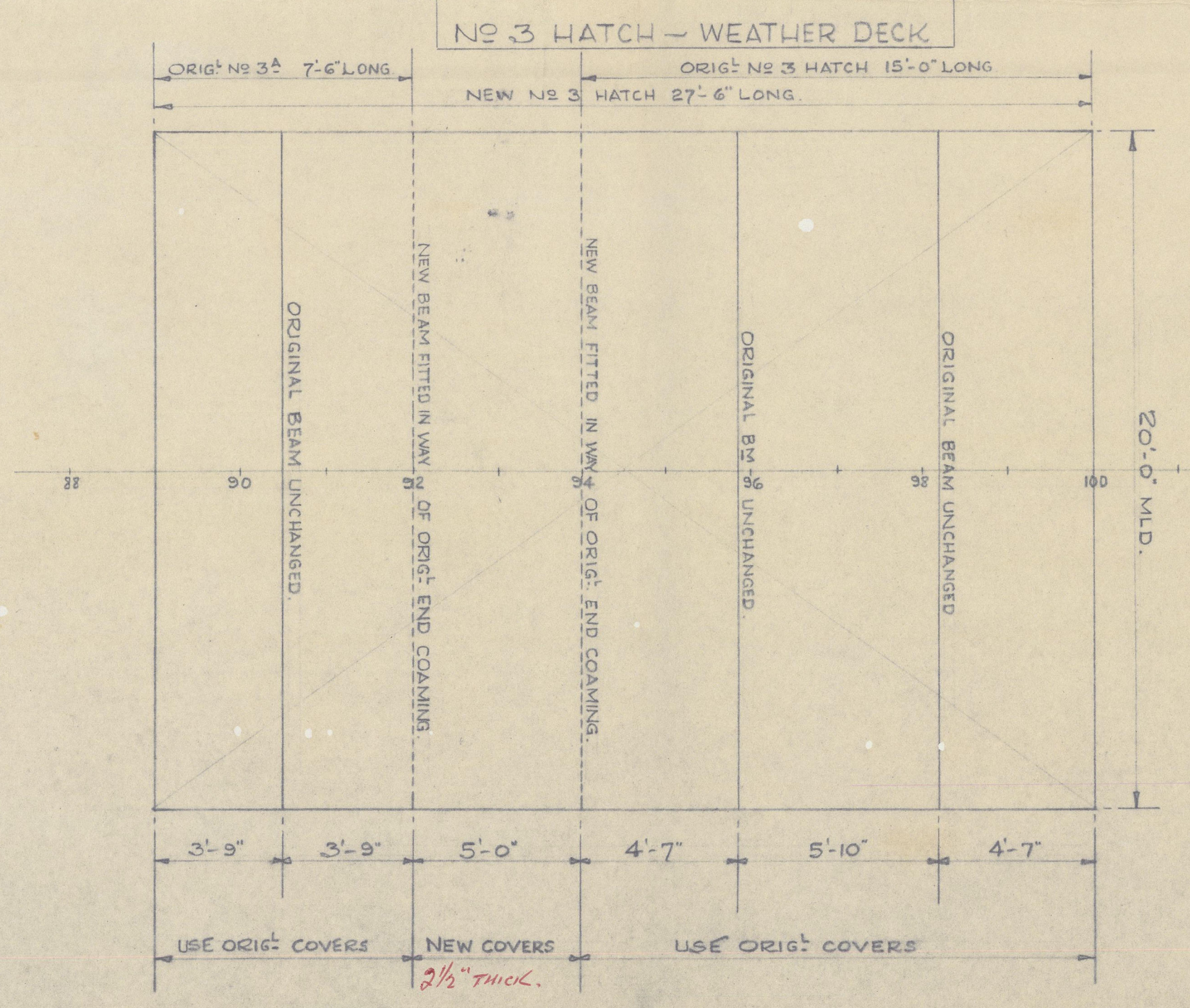
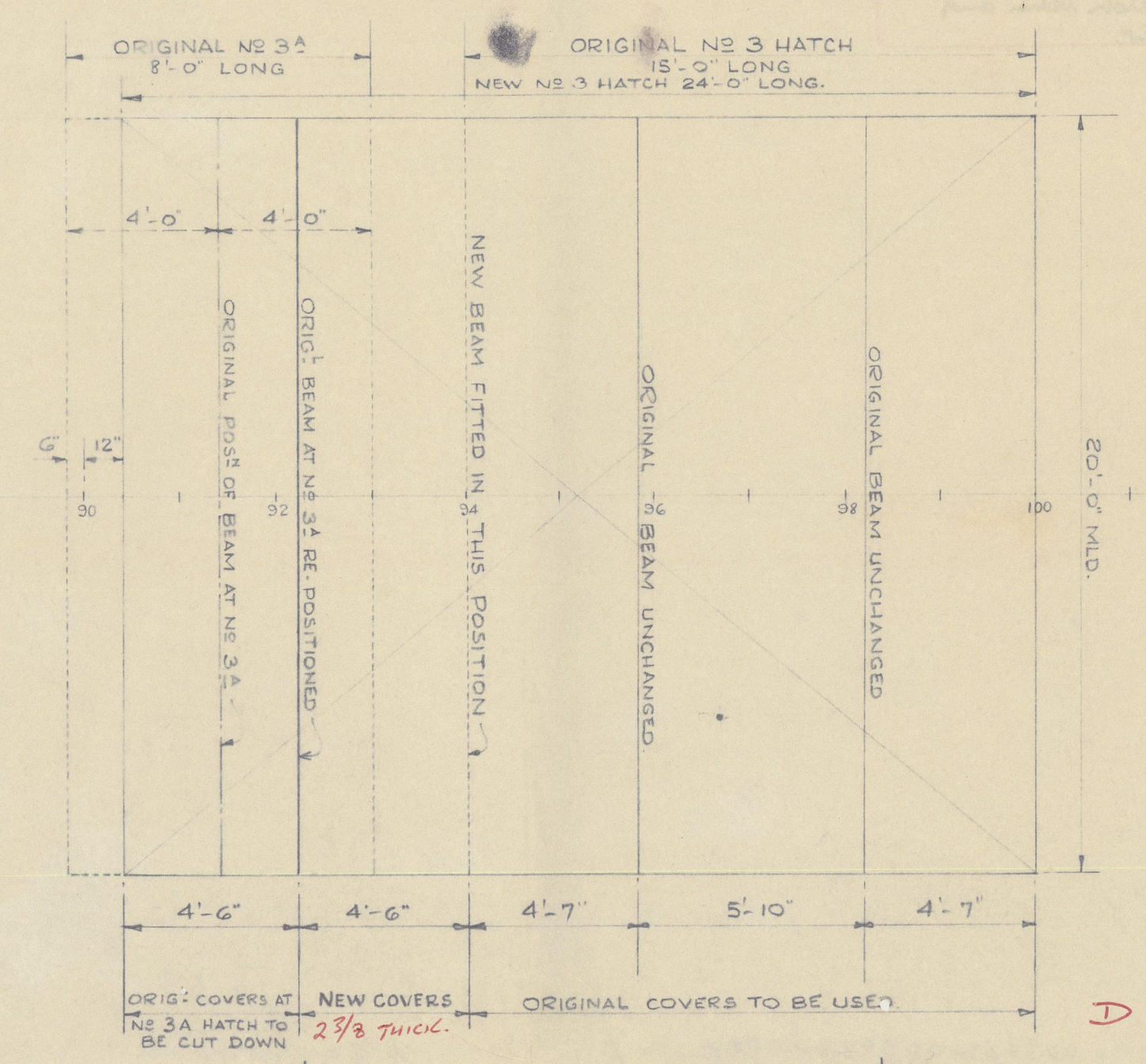


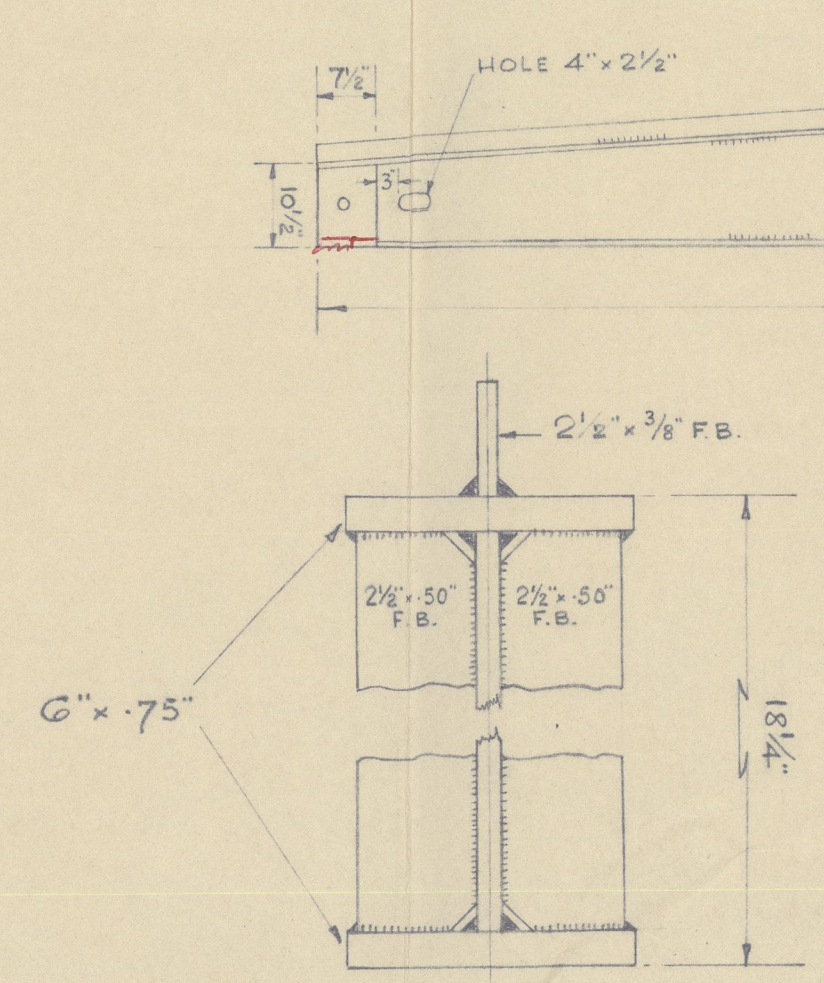
— ARRANGEMENT OF HATCHES —

Brackets or stays to be provided on coamings spaced not more than 10'0" apart

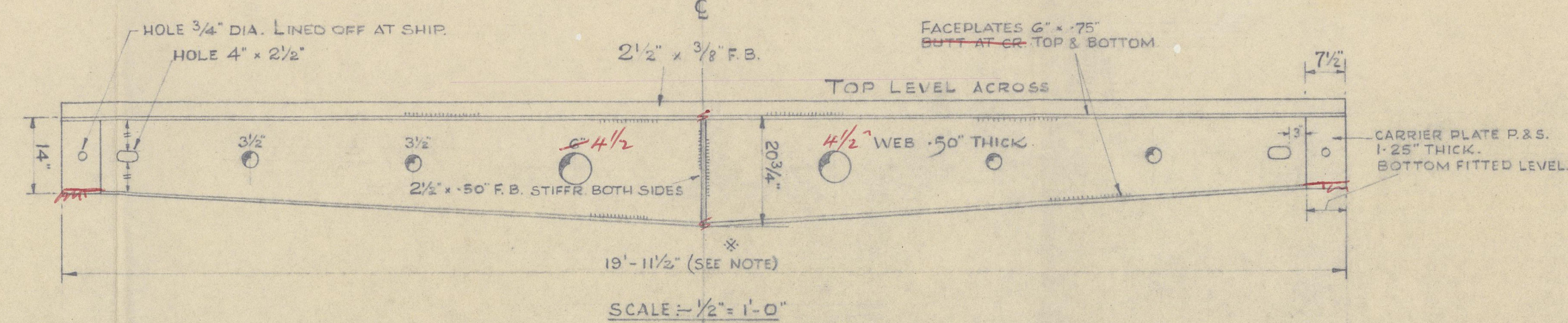


NO 3 HATCH — 2ND DECK
HEIGHT OF TWEENDECK IN WAY = 9'-6"
(SCALE: 1/4" = 1 FT)

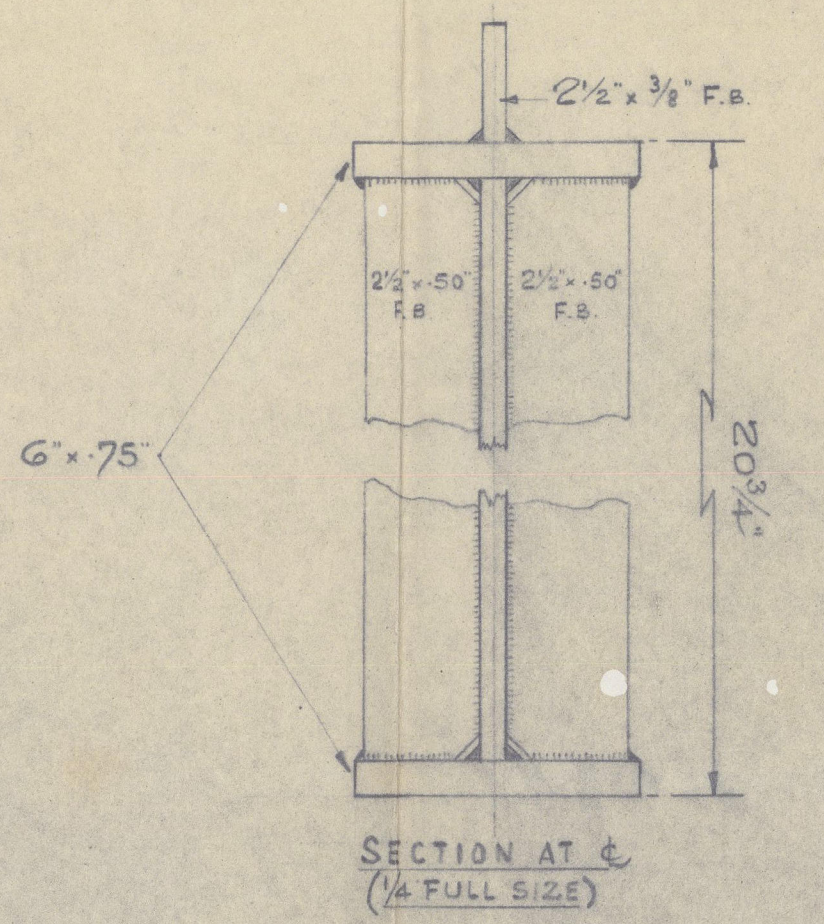
— HATCH BEAMS —



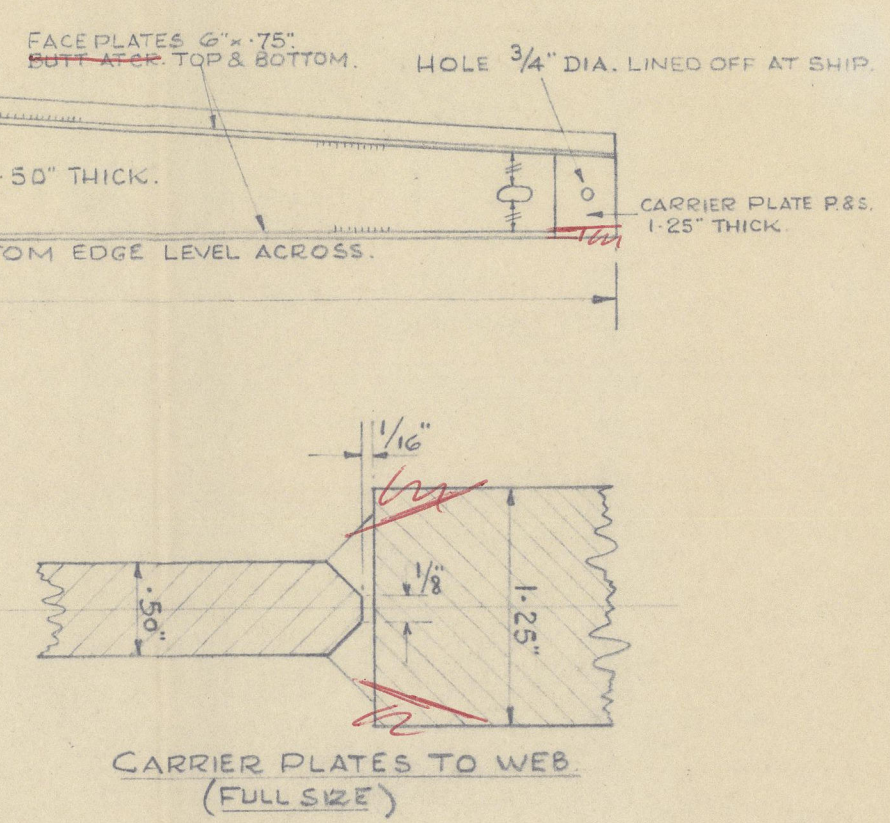
NEW HATCH BEAM FOR NO 3 HATCH, WEATHER DECK (ONE OFF ONLY)



NEW HATCH BEAMS FOR NO 3 HATCH, 2ND DECK (2 OFF)



NEW HATCH BEAMS FOR NO 3 HATCH, 2ND DECK (2 OFF)

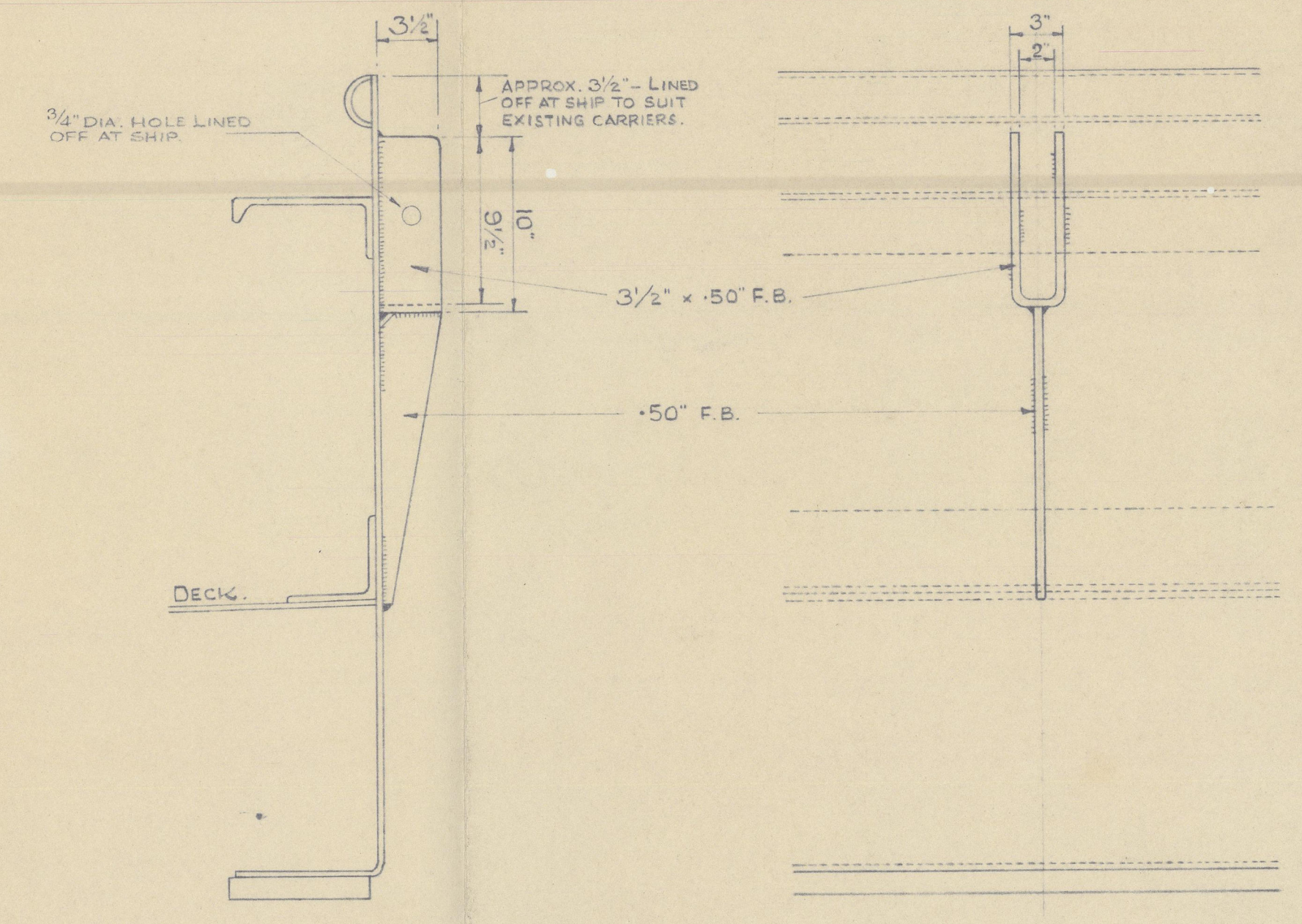


WELDING OF CARRIER PLATES TO WEB AS AT WEATHER DECK BEAM.

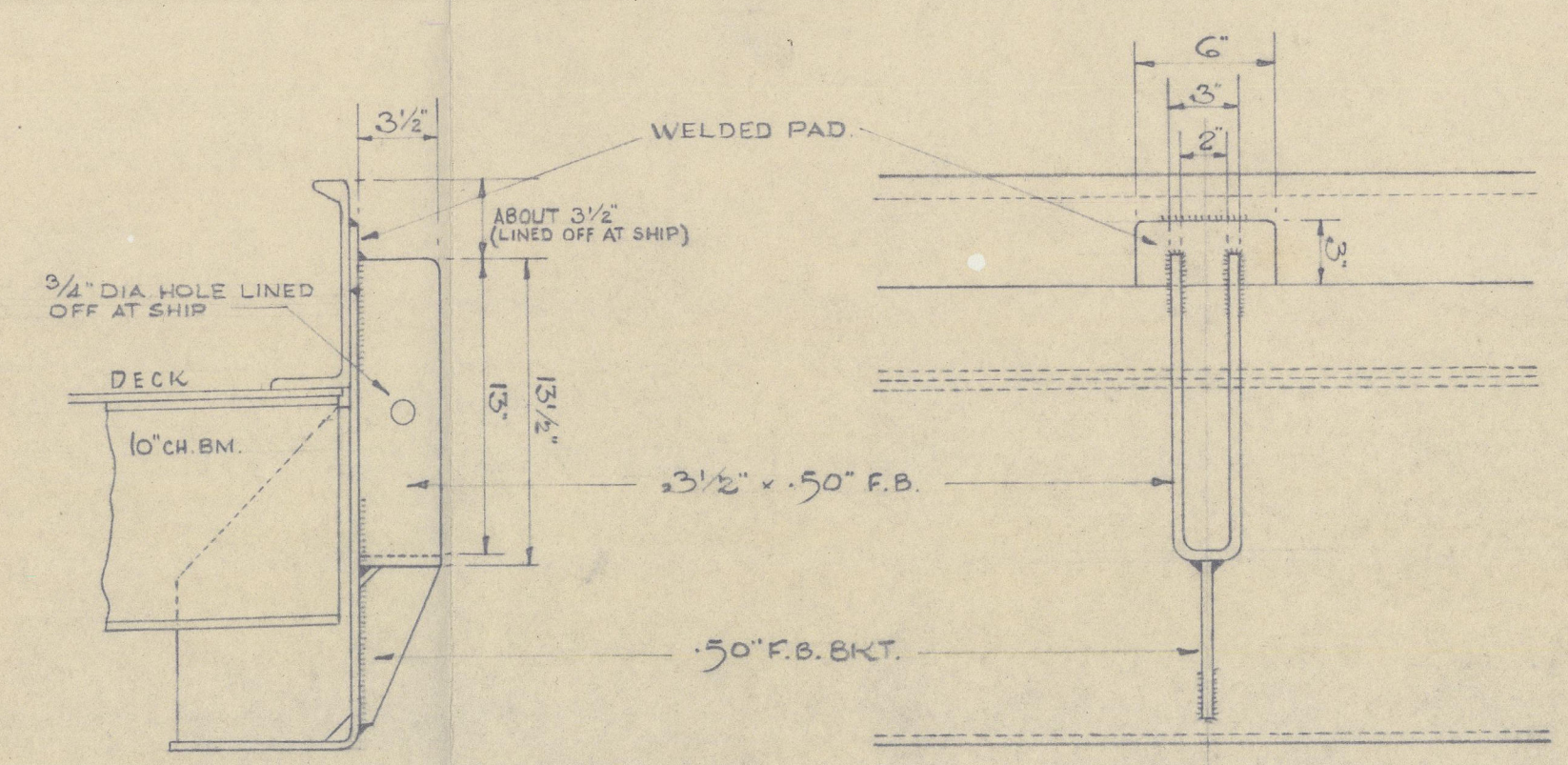
— GENERAL —

PERMANENT GRANT FITTINGS ON BEAMS, & PAINTING OF BEAMS, TO OWNERS' REQUIREMENTS.
FINISHED INSIDE BREADTH BETWEEN HATCH COAMINGS TO BE CHECKED IN WAY OF POSITIONS OF NEW BEAM CARRIERS BEFORE WORKING THE BEAM MATERIAL.
CLEARANCE NOT TO EXCEED 1/4" AT EACH END OF BEAM.

— CARRIERS —



WEATHER DECK HATCH BEAM CARRIERS (2 OFF)
SCALE: 1 1/2" = 1 FT



2ND DECK HATCH BEAM CARRIERS (4 OFF)
SCALE: 1 1/2" = 1 FT

3/8" CAPE DREPANON
ADDITIONAL HATCH BEAMS & CARRIERS.
SCALES AS INDICATED

VEROLME CORK DOCKYARD LTD



AGSLOW REPORT 09070

003023-003028-0080

© 2021

Lloyd's Register

115 1/2" x 115 1/2" x 115 1/2" (Lloyd's, 6-12-60)

SS/MS "CAPE DREPANON"	
TO ACCOMPANY	Dub Rpt. No. 9070.
Dated 1.1-61.	
SUBJECT:- Additional hatch beam and carrier.	



© 2021

Lloyd's Register
Foundation

003023-003028-0080