

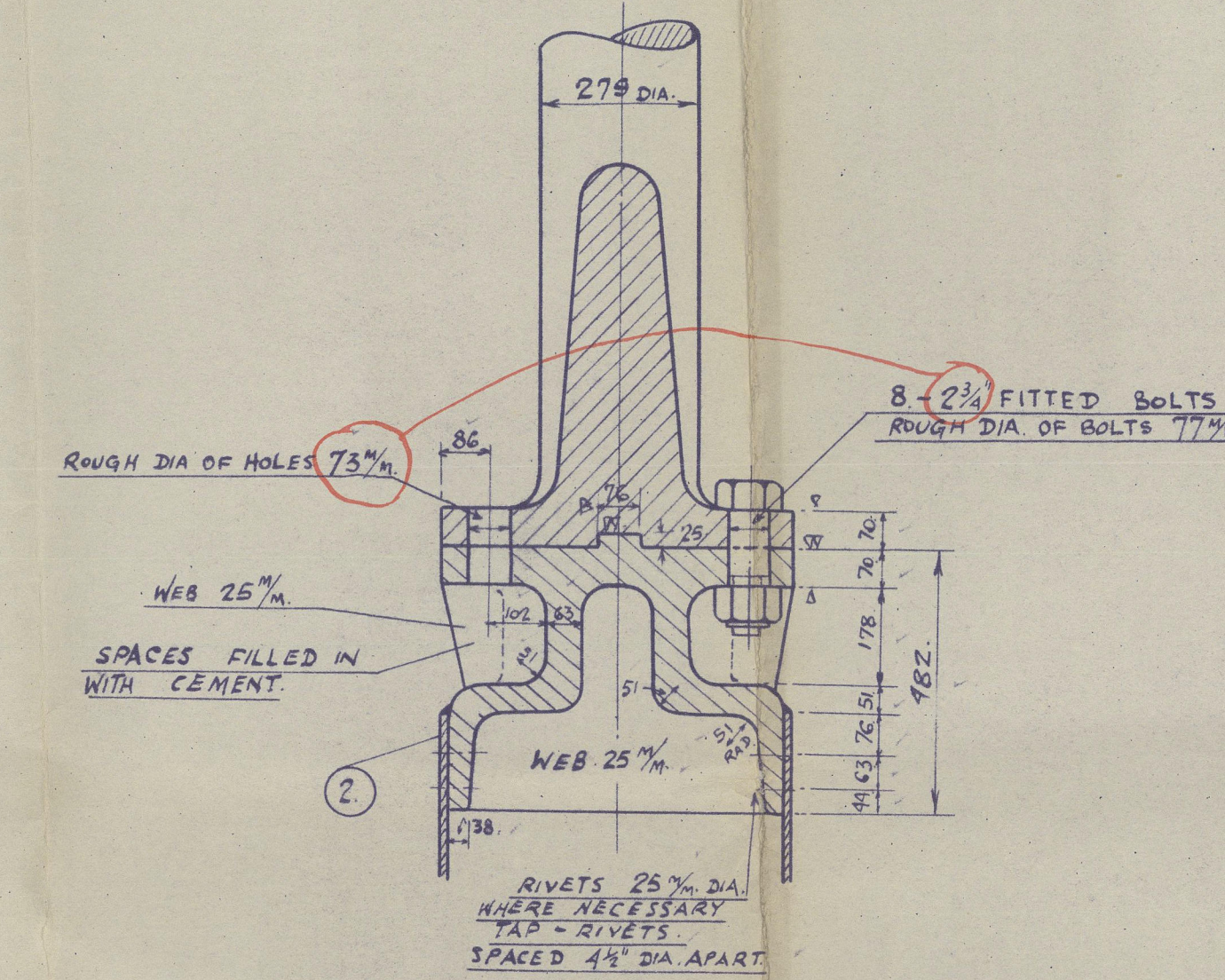
SI-11P N°57.

SIMPLEX - BALANCED - RUDDER. DETAIL OF LIGNUM-VITAE BUSHES.

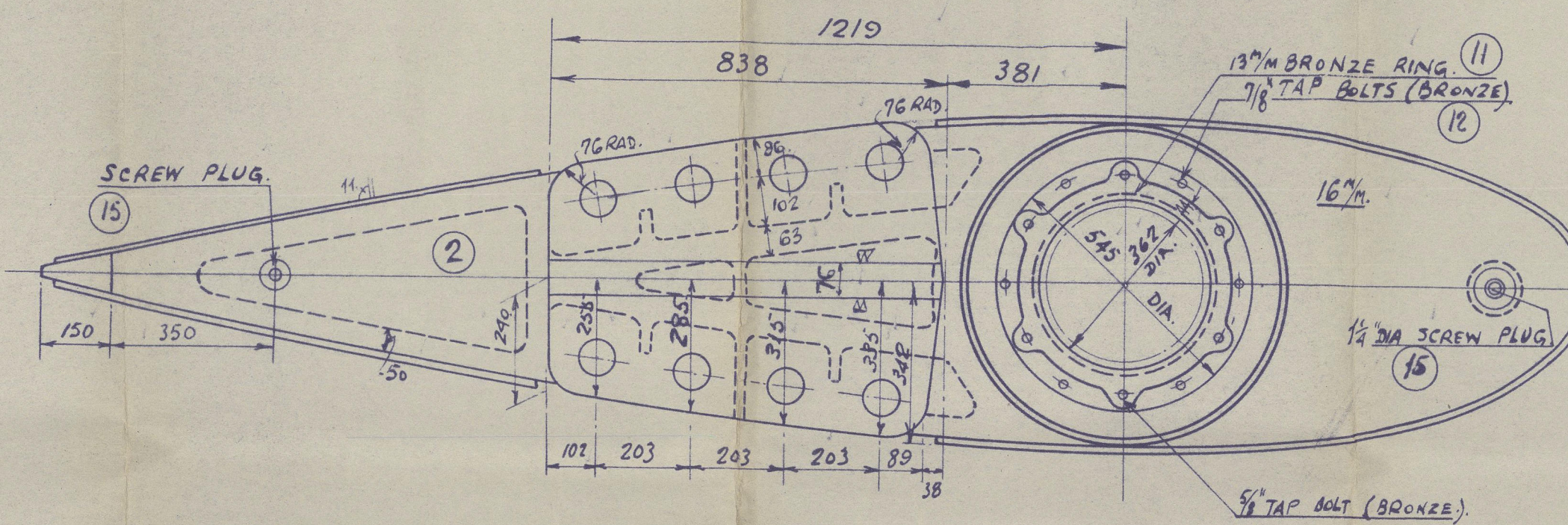
Scales - 1:24, 1:12, 1:3.

Notation in Register Book
Rudder electrically welded.

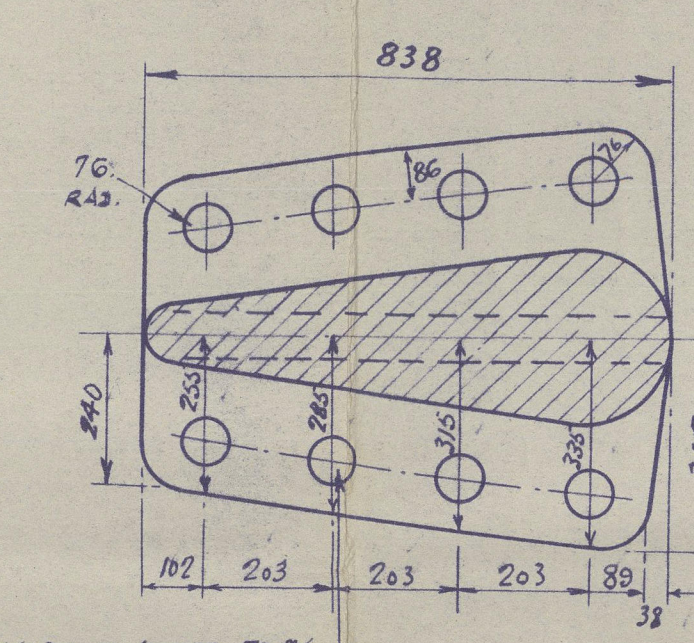
SECTION: A-A.
SCALE: 1:12.



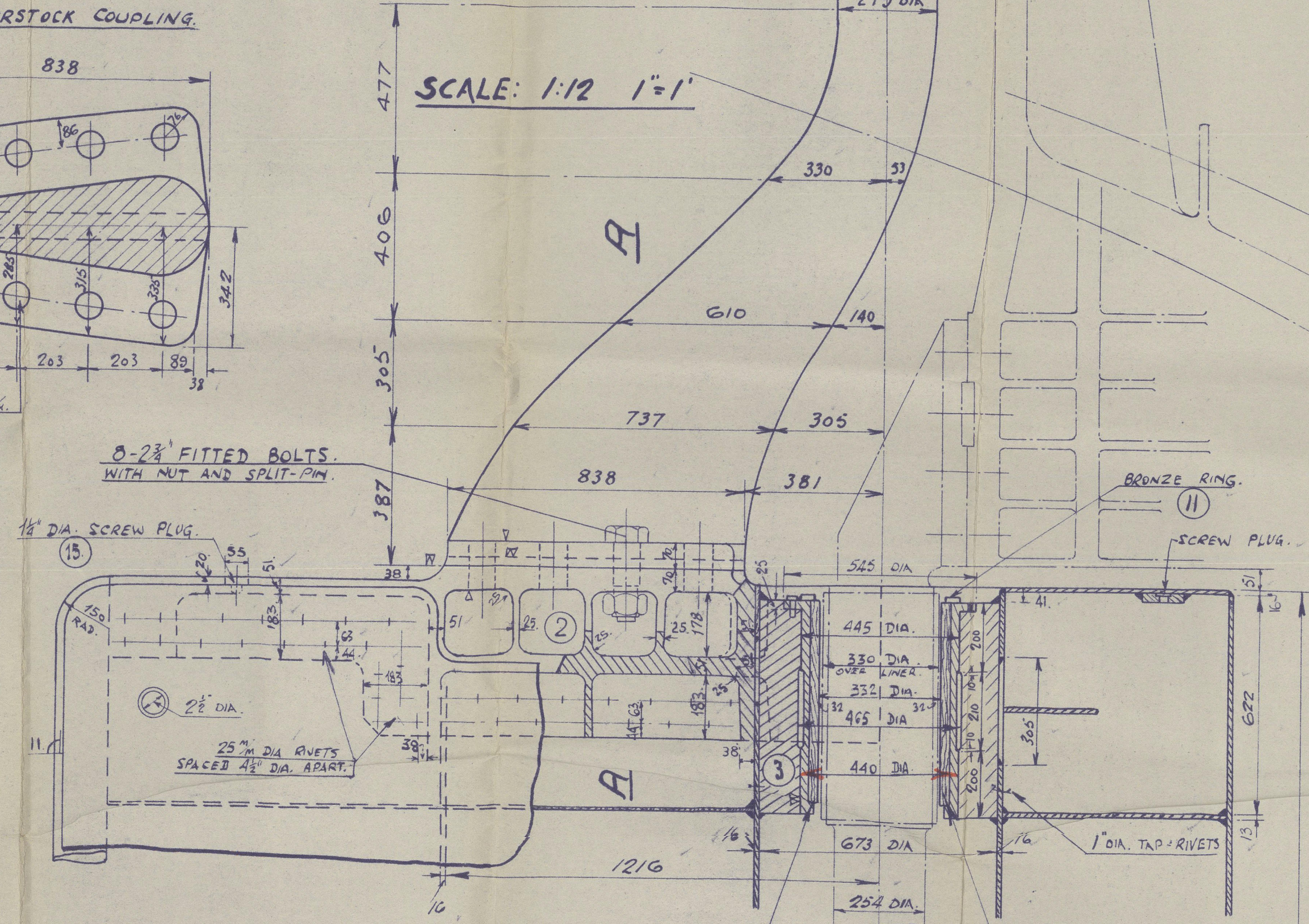
SECTION: B-B
1:10.



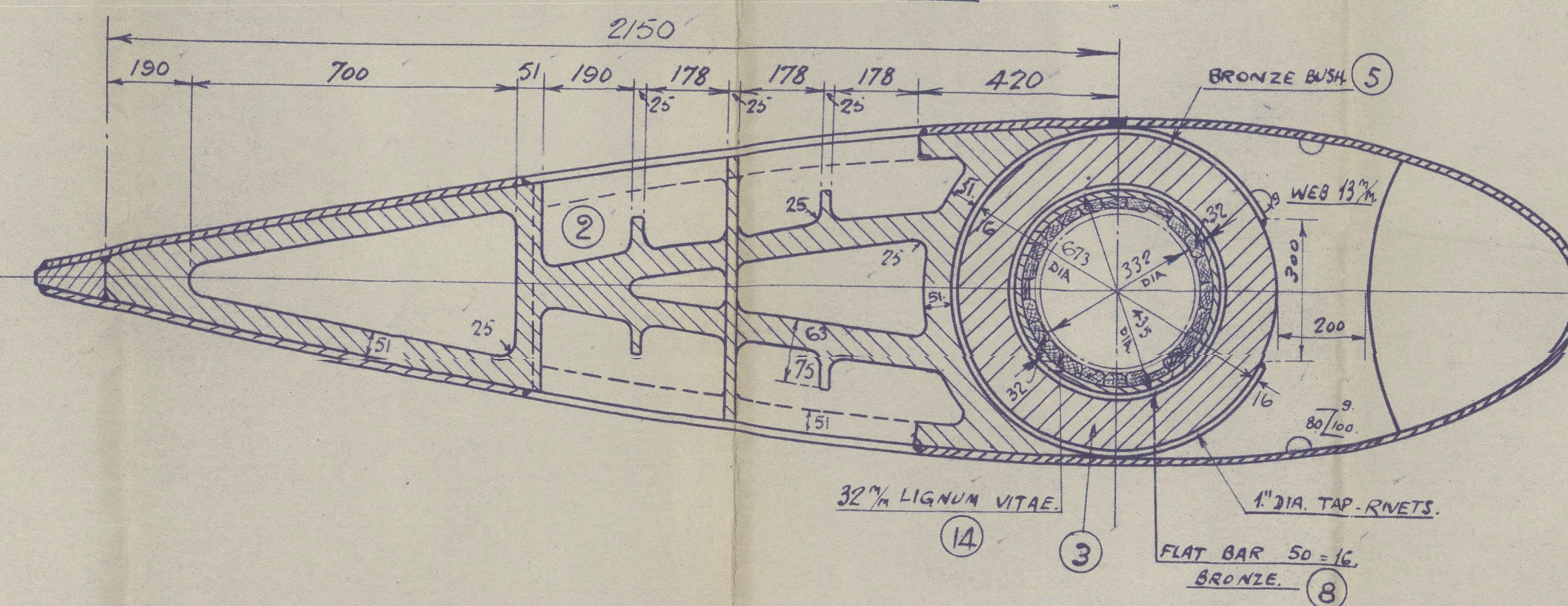
RUDDER STOCK COUPLING.



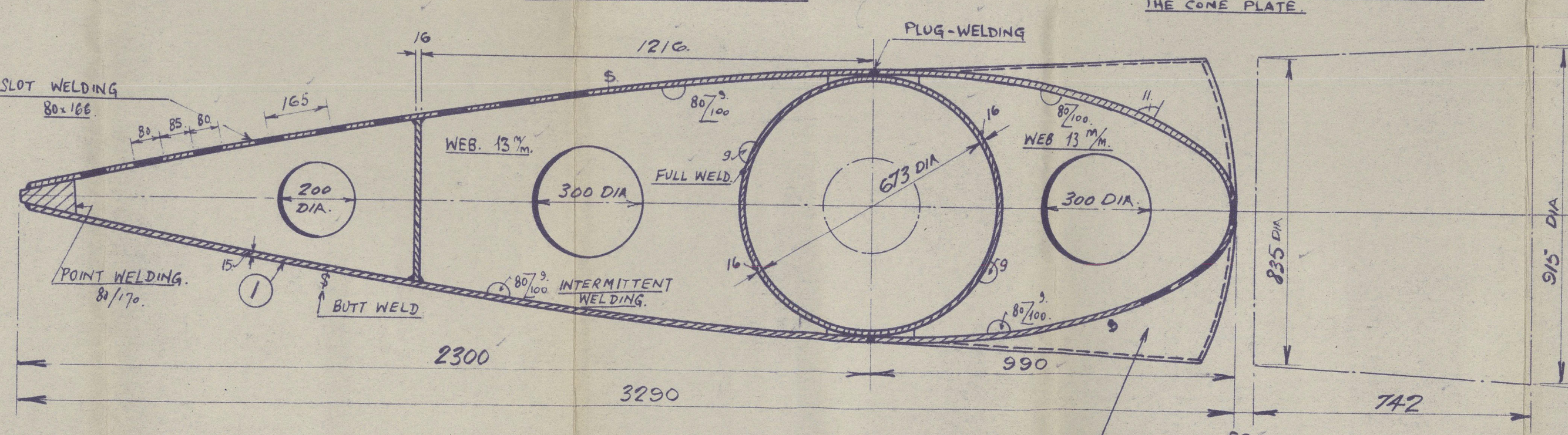
SCALE: 1:12 1:1.



SECTION: C-C.

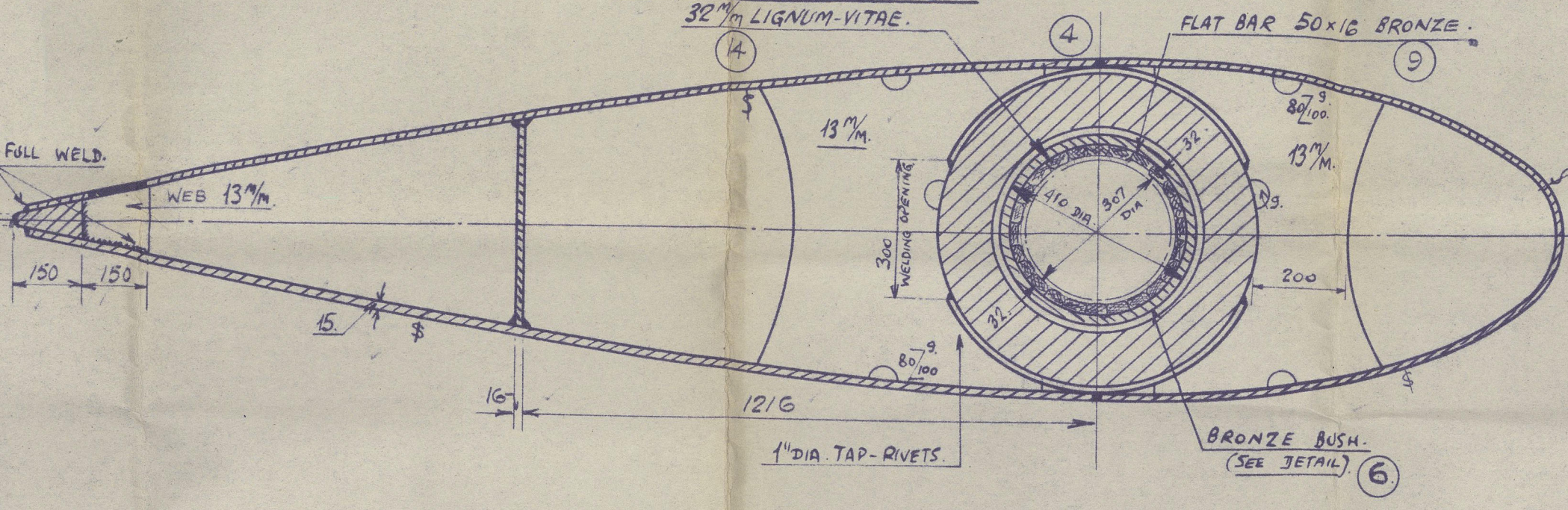


SECTION: D-D.

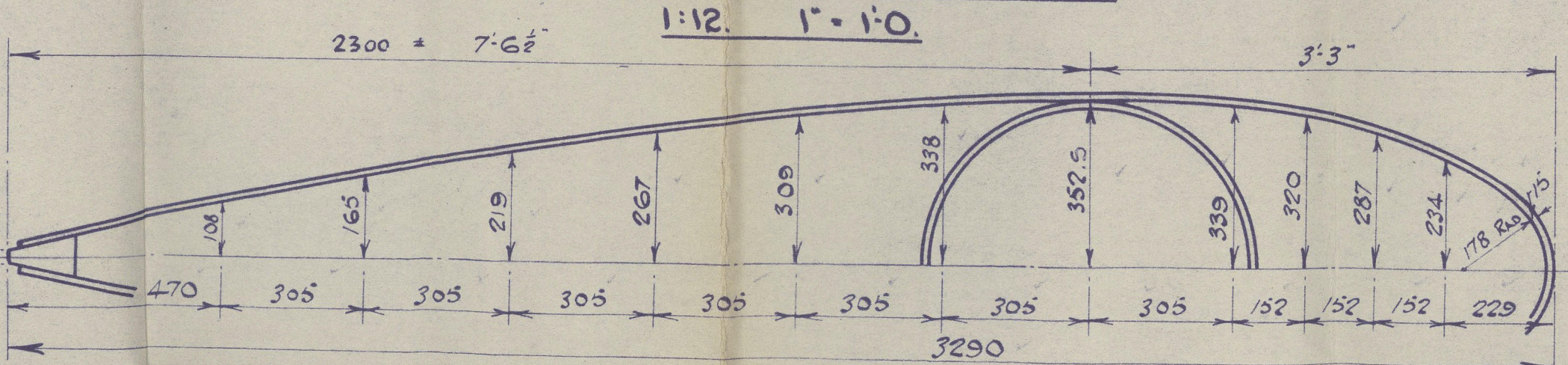


PRECAUTION:
WHEN WELDING THE CONE PLATE THE
RUDDER BUSHES SHOULD BE FILLED UP WITH
WATER, JUST A LITTLE HIGHER THAN
THE CONE PLATE.

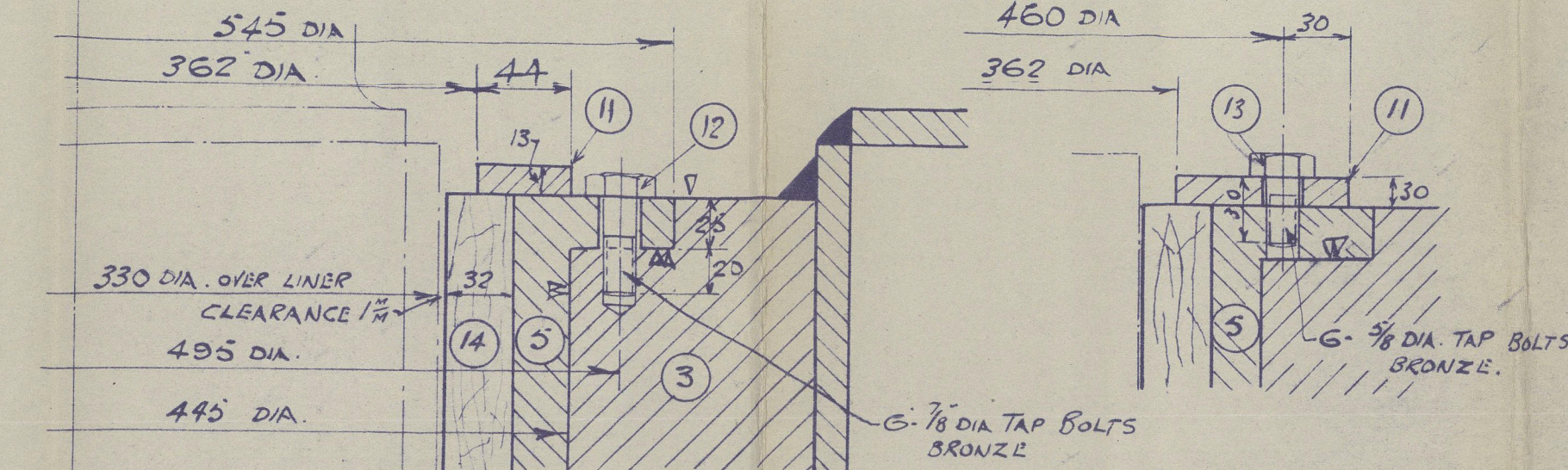
SECTION: E-E.



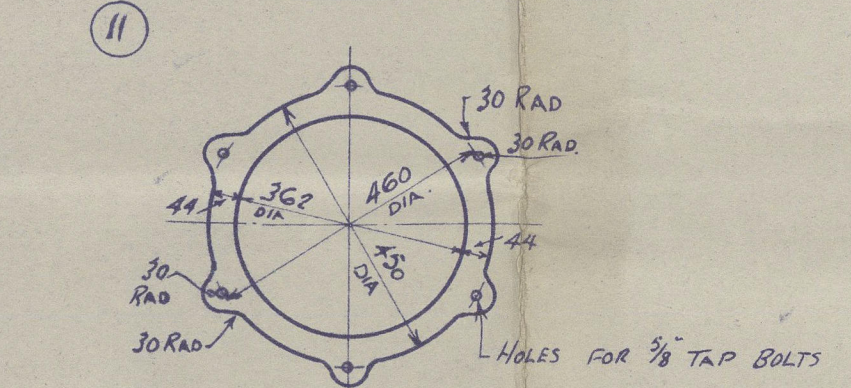
PROFILE OF RUDDER
1:12. 1:10.



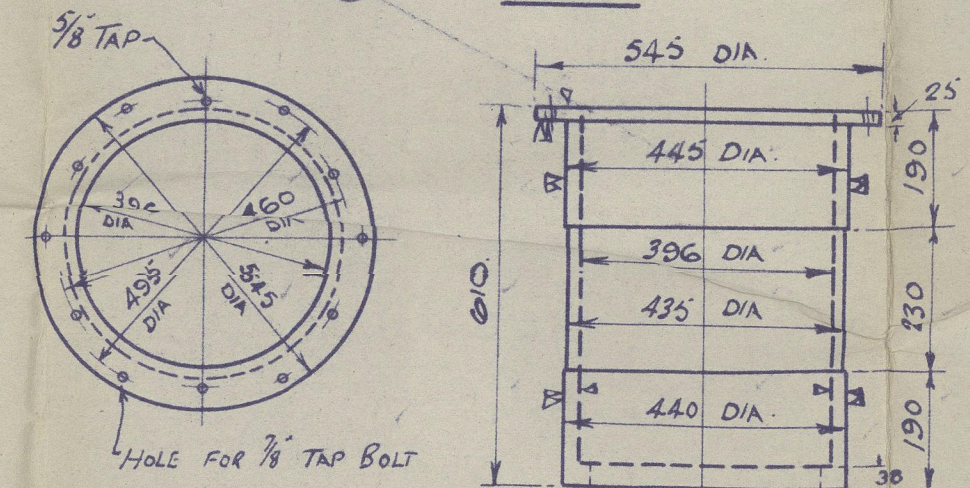
ARRANGEMENT OF BRONZE RING.
1:3.



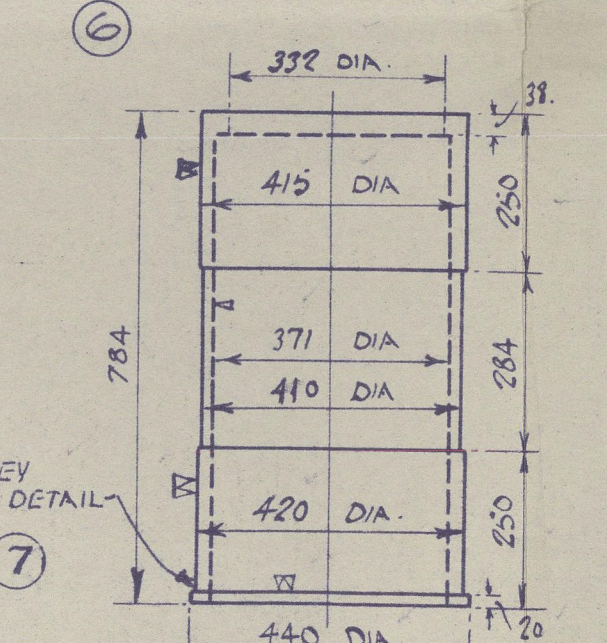
1 3/4" BRONZE RING.



UPPER BRONZE BUSH.
1:12.



LOWER BRONZE BUSH.



DIMENSIONS:

LENGTH 160'-0"
BREADTH 33'-0"
DEPTH 14'-0" TO UPPER DECK
SPEED OF VESSEL 12 knots
DISPLACEMENT 100 tons

TO PASS LLOYD'S SURVEY & TESTS.

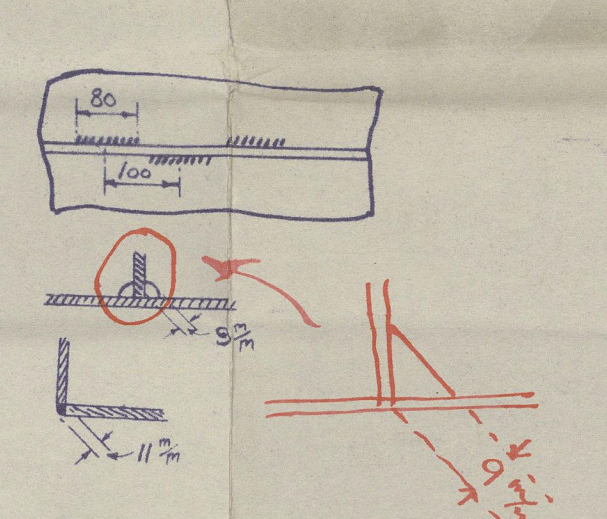
AS N°	OBJECTS	MATERIAL	REMARKS
1	RUDDER BODY	S.M. STEEL	
2	COUPLING - PIECE	CAST STEEL	
3	UPPER BEARING		
4	LOWER BEARING		
5	UPPER BRONZE BUSH		
6	LOWER BRONZE BUSH		
7	KEY		
8	FLAT BAR - 572x50x16		
9	FLAT BAR - 746x50x16		
10	24 COPPER RIVETS 16/16 DIA	COPPER	
11	1 3/4" BRONZE RING	BRONZE METAL	
12	6 3/8" TAPBOLT LENGTH 45 3/4"		
13	6 3/8" TAPBOLT LENGTH 30 3/4"		
14	2 LIGNUM-VITAE BUSH	LIGNUM-VITAE	
15	4 SCREW PLUG 1 1/2" SQUARE THREAD	BRONZE METAL	
16	1 UPPER BEARING RING	HARD STEEL	
17	1 LOWER BEARING RING	SOFT STEEL	

NOTES

- THE FORWARD AND AFTER PART OF THE RUDDER IS TO BE FILLED WITH SOLUTION AND SUBJECTED TO A PRESSURE OF 7.5 LBS PER SQ INCH. WHEN THE SOLUTION DRIES IT WILL HAVE TO BE REAPPLIED BY LLOYD'S. AFTER THAT THE SOLUTION WILL HAVE TO BE REMOVED AGAIN AND THE SCREW PLUGS TO BE REMOVED.
- INSIDE-PIPE IN THE RUDDER IS TO BE PAINTED WITH SOLUTION.
- THE ELECTRIC WELDING SHOULD BE CARRIED OUT TO THE EXTRACTION OF THE RUDDER'S SURVEYORS, AND THE REGULATIONS FOR THE APPLICATION OF ELECTRIC ARC WELDING TO SHIP CONSTRUCTION SHOULD BE COMPLIED WITH.
- TAKE SPECIAL CARE THAT THE RUDDER STOCK IS FLUSH WITH THE RUDDER - BUSHES (OR THE CYLINDRICAL UPPER PART).
- STOWAGE AND RUDDER STOCK SEE SEPARATE DRAWINGS.

WELDING.

- 8/100 INTERMITTENT WELD.
- 100% FULL WELD.
- 100% FULL WELD.



LLOYD'S
F685

APPROVED
LLOYD'S REGISTER OF SHIPPING
F. H. H. H.

DATE 8. 12. 38



5

Blythwood N.B. 6/4

003046-003055-0295

20.54.

Simplex Balanced
Rudder



© 2020

Lloyd's Register
Foundation

57 Donacilla*
GLASGOW REPORT No 61720