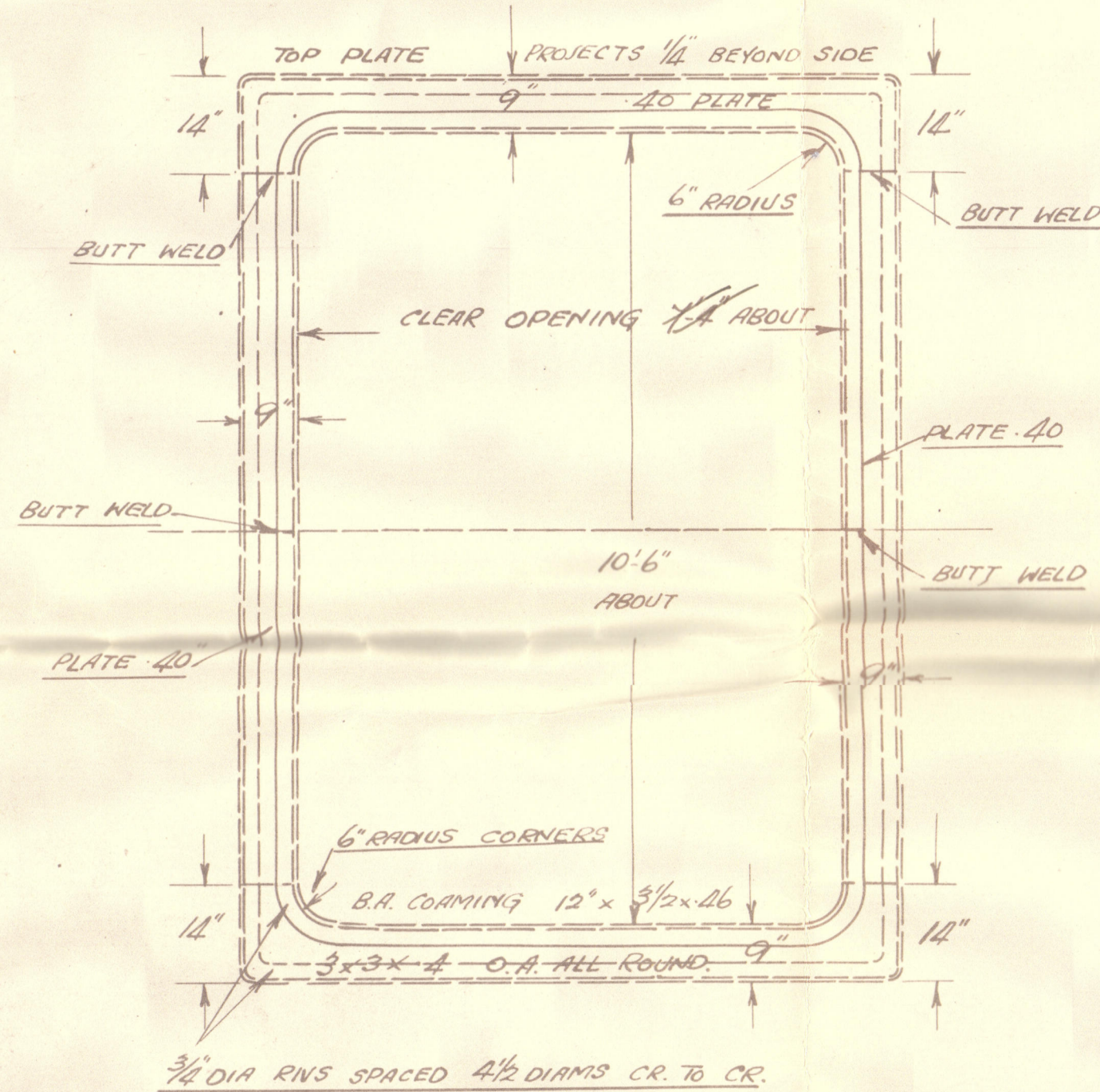
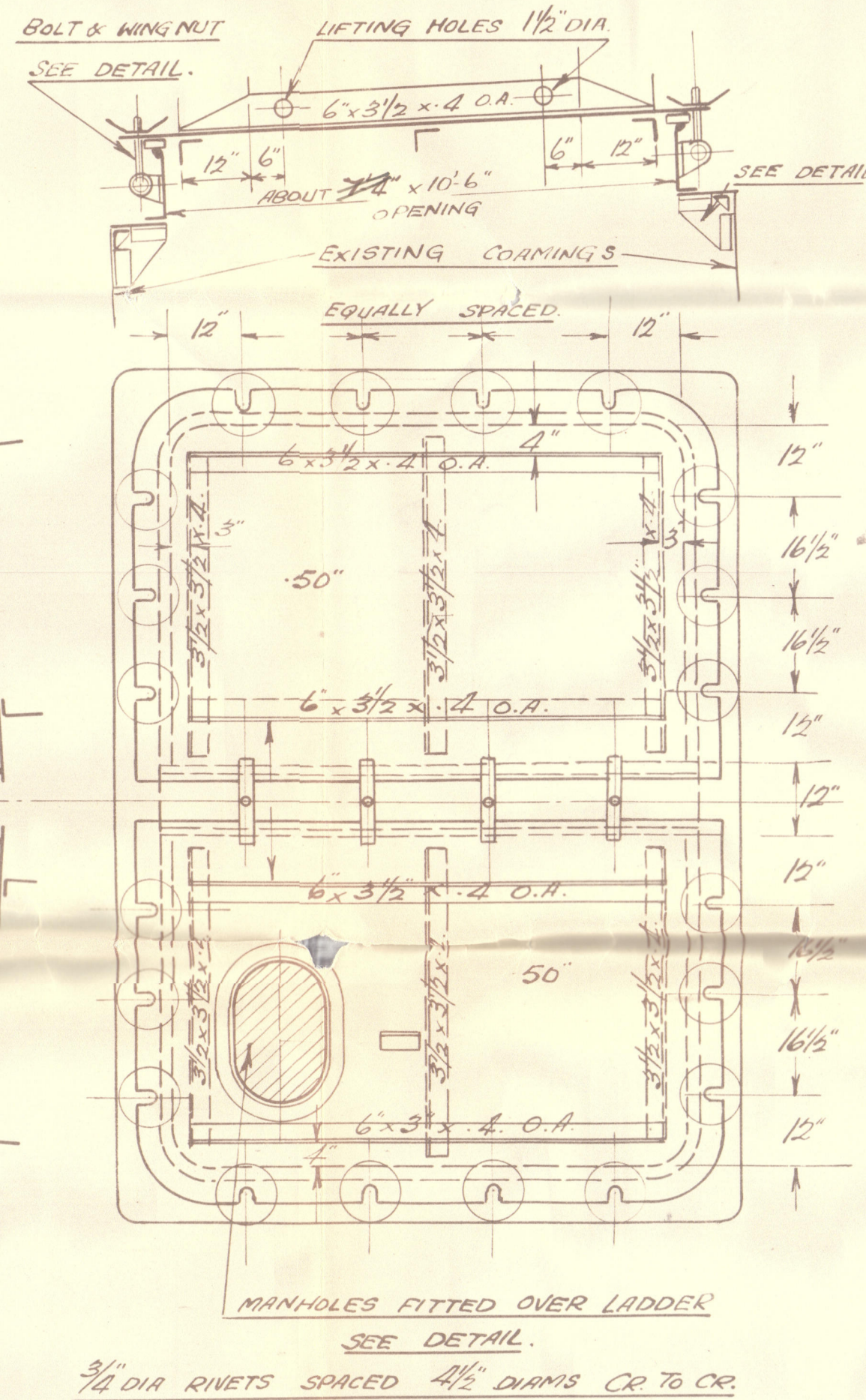


STEEL WATERTIGHT COVER FOR
HATCH OVER FORWARD HOLD
SCALE $\frac{1}{2} = 1$ FOOT.

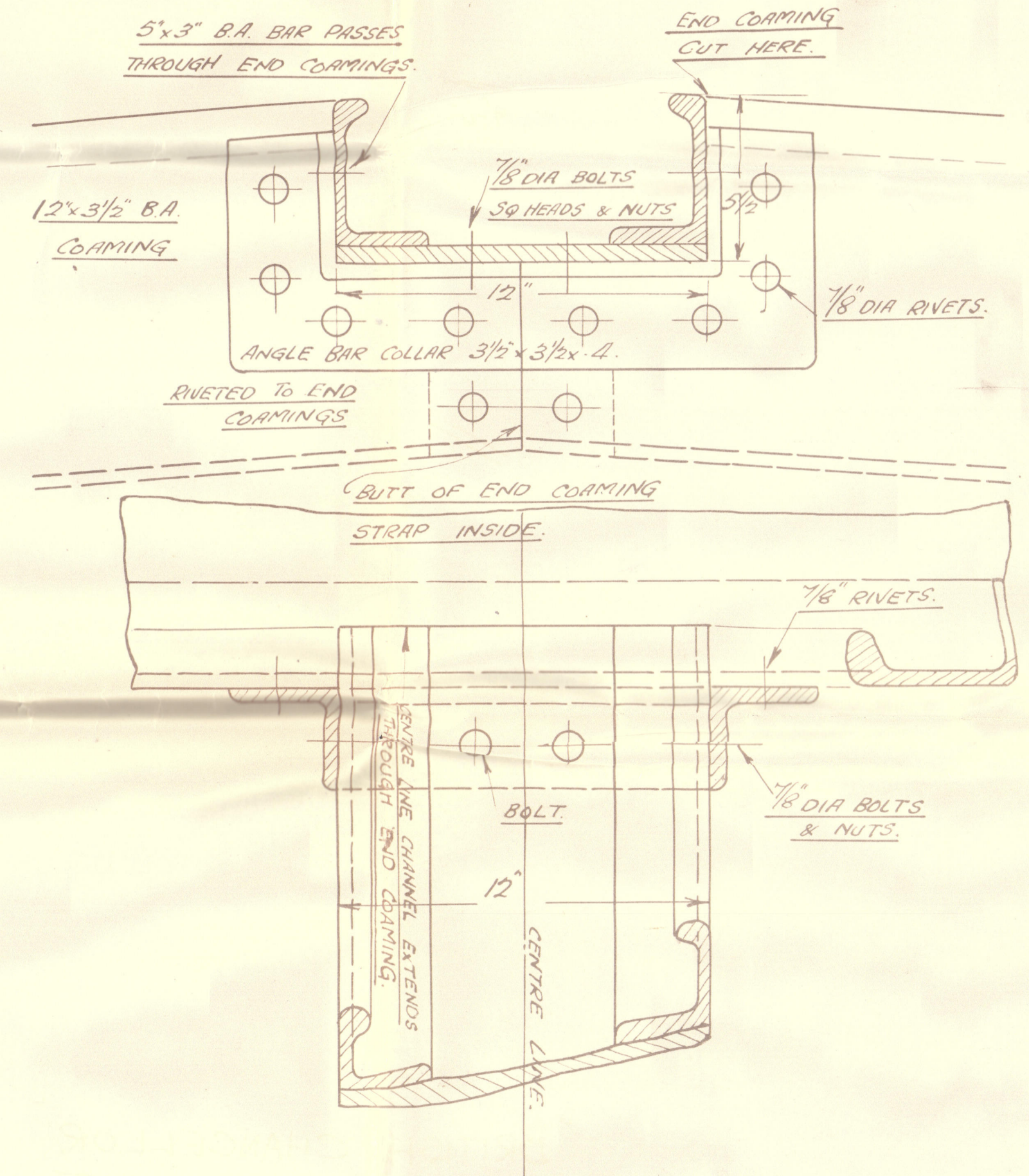
ARRANGEMENT OF PLATING AT UPPER EDGE
OF EXISTING PLATE COAMINGS FOR
HATCH 12'-0" x 9'-0"



BRITISH CHANCELLOR



DETAIL AT JUNCTION OF END COAMING
& CENTRE LINE CHANNEL.
 $\frac{1}{4}$ SIZE.

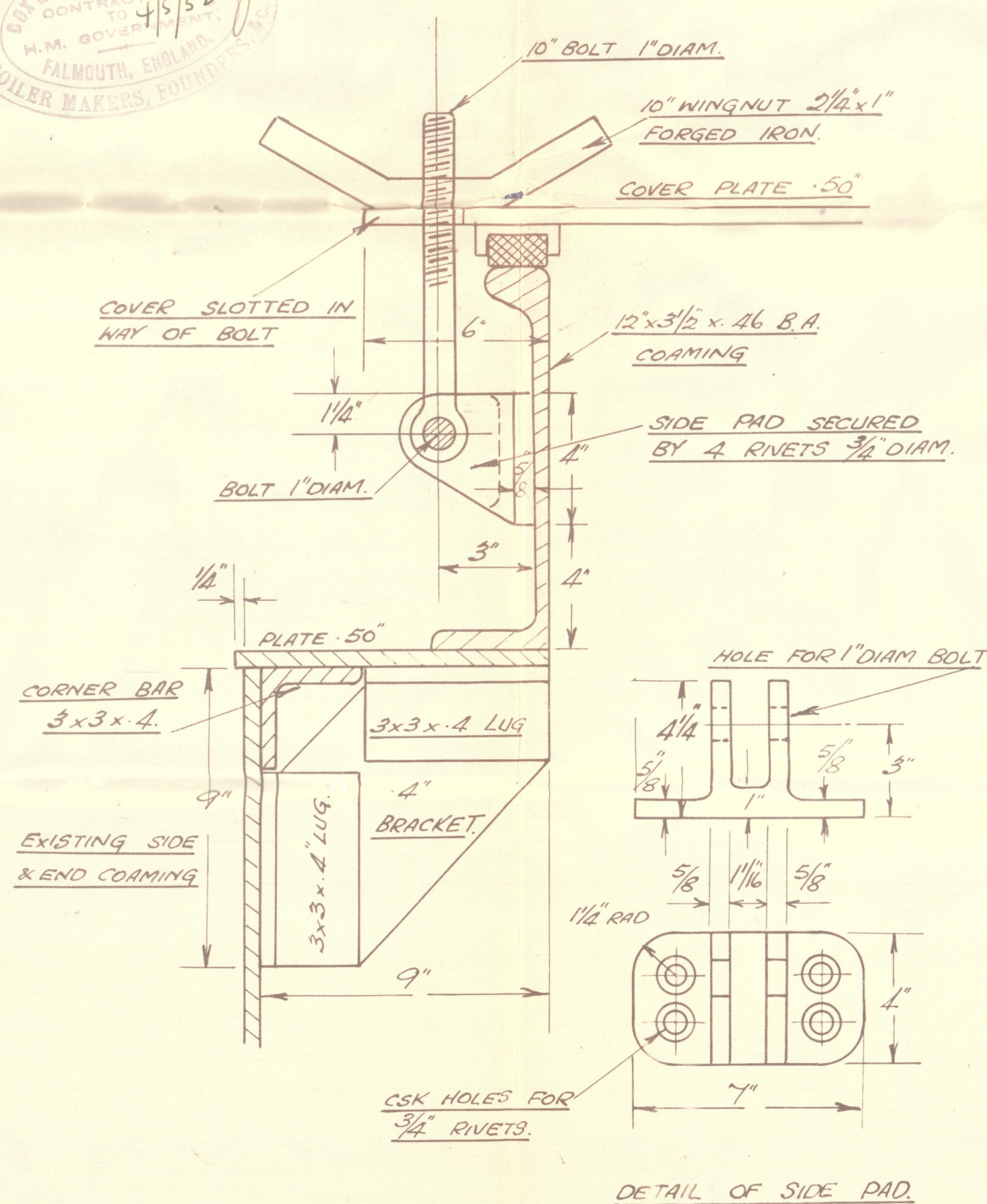
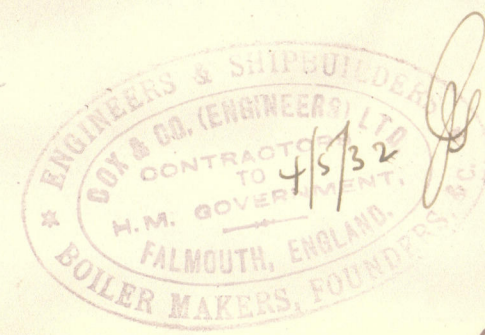
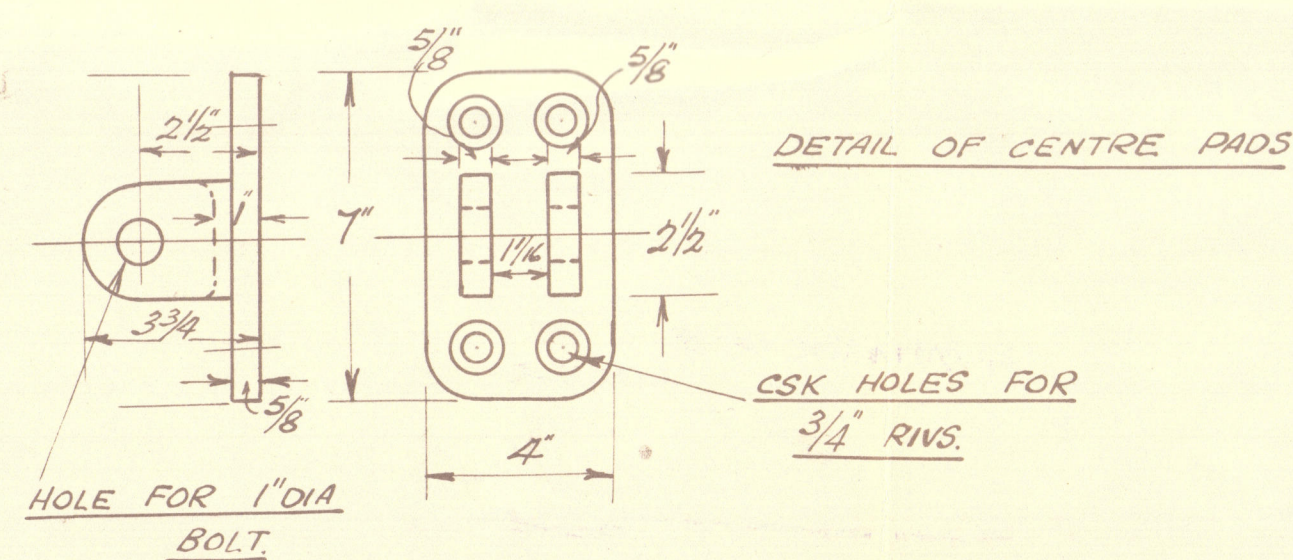
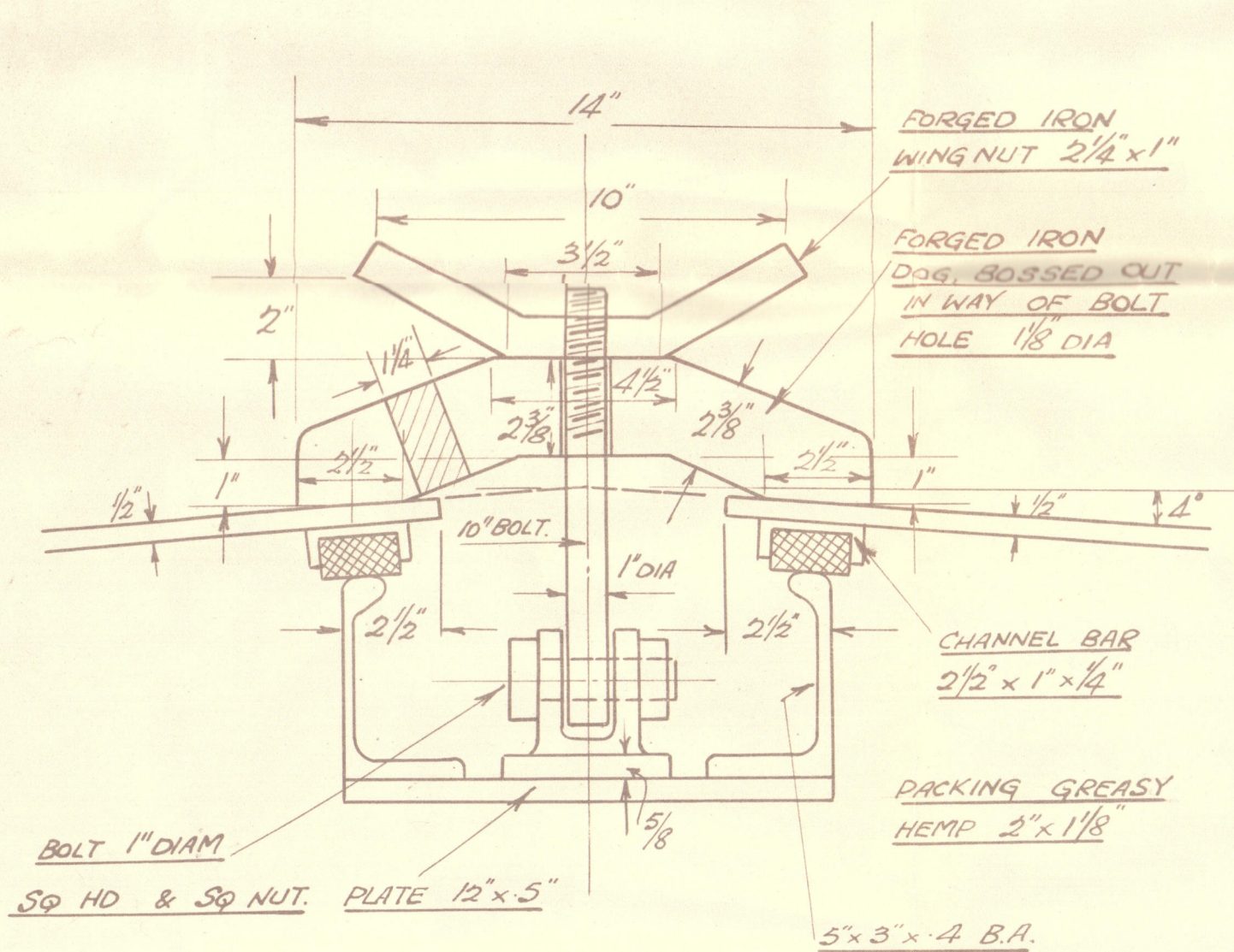


BRITISH TANKER CO

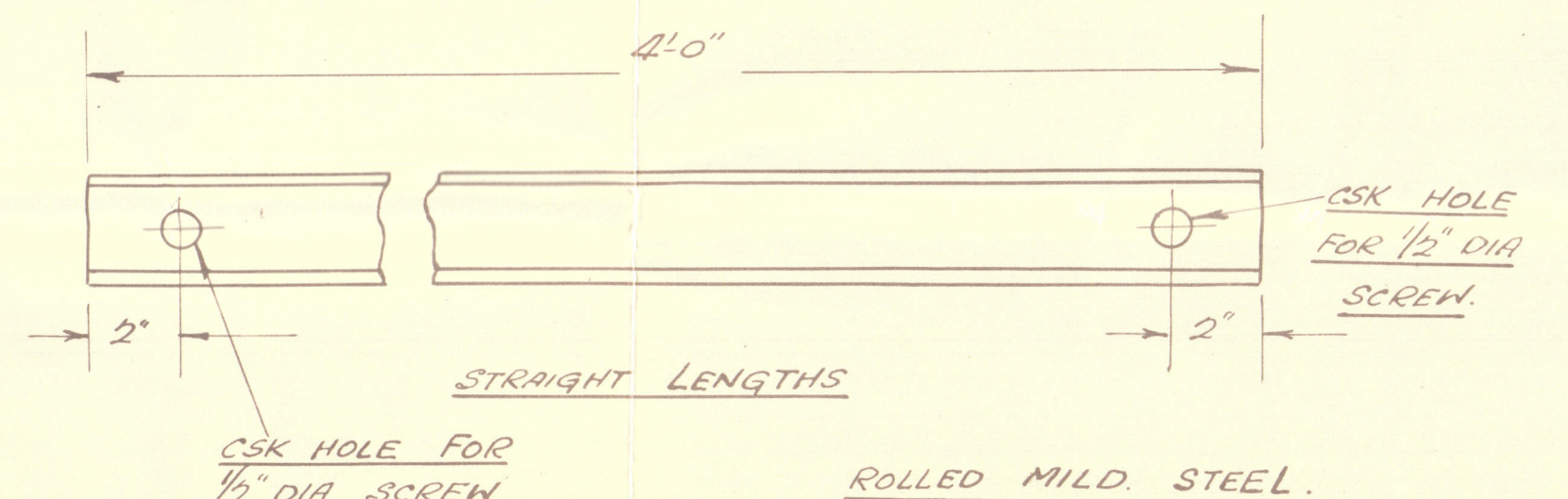
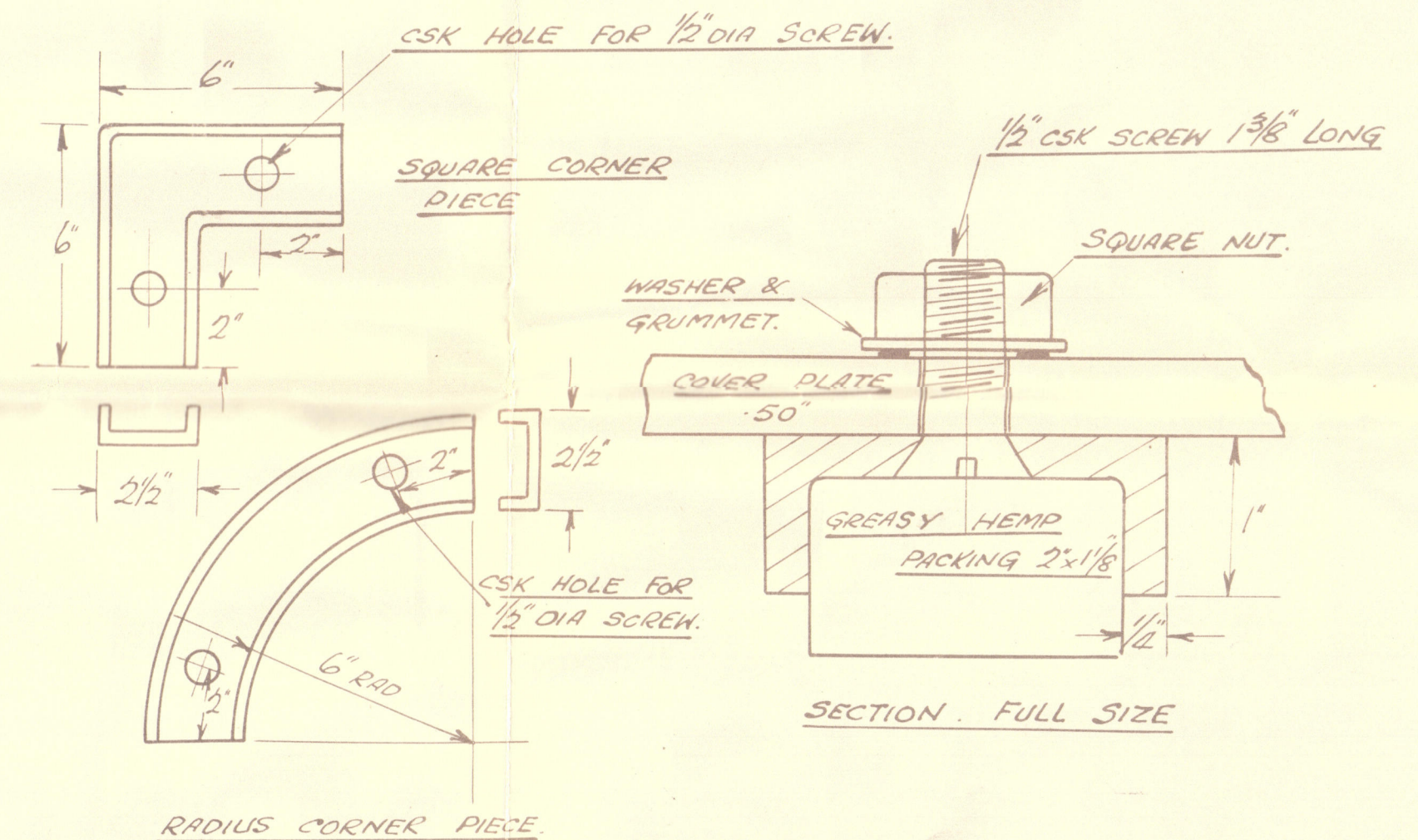
STANDARD HATCH COVER (STEEL) FOR
FORW^D CARGO HATCH ARRG^T & DETAILS.

SCALE $\frac{1}{4}$ SIZE

ARRANGEMENT OF CHANNEL, BOLTS
DOGS & WING-NUTS ON CENTRE LINE



CHANNEL BAR $2\frac{1}{2} \times 1 \times \frac{1}{4}$ CAST IRON.



Lloyd's Register of
Shipping.

al. 4.5.32

© 2021
Lloyd's Register
S.O. 2056

003065-003074-0226

Freewood.

Turner.

British Chancellor

Forward Cargo Hatchway.

4. 1. 32
—



© 2021

Lloyd's Register
Foundation

003065-003074-0226