

Forecastle?

fore end?

arks?

ter end?

er?

Ship.

ra.

at 1/2 of the length from

al mean Sheer

rd mean Sheer [Table, Para. 18]

united as Para. 18 (f)

in Sheer

amidships

18 (e)]

in Sheer

18 (d)]

uncovered

ard, Table C

ion for Length, if required (Para. 12, 13, and 14)

ard by Table A, corrected for sheer, and for length,

if required (Para. 12, 13, and 14)

nce

tage as below

ion for R. Q. Dk. if engine and boiler openings not

covered by bridge house (Para. 11)

nce for Deck Erections

stle

House

ed Qr. Dk.

Total

of Ship

ponding percentage

ra. 11, 12, 13, or 14)

BOARD recommended amidships from centre of Disc to top of Statutory Deck Line, Wood (Steel) Deck :-

Fresh Water Line

Indian Summer Line

Winter Line

Winter North Atlantic Line

the frames, skin planking, or ceiling are of unusual thickness the breadth of vessel to inside

of ceiling should be reported if possible.

vessels obtaining an allowance for deck erections under Para. 11 where the sheer drops abaft amid-

ships the height of the R.Q.D. is to be taken from the level of the top of the amidship beam.

flush-decked vessels the total standard mean sheer means the sheer measured at the stem and stern-

post. In vessels having poops and forecastles, it means the sheer measured at points distant

one-eighth of the vessel's length from stem and stern-post.

PRELIMINARY.

9 DEC 1925

Index No. 31409  
(For London Office only.)

# Lloyd's Register of Shipping.

## SURVEYS FOR FREEBOARD.—STEAM SHIPS.

GLASGOW REPORT No. 15223

Port of Survey *Glasgow.*  
Date of Survey *8<sup>th</sup> December 1925.*  
Name of Surveyor *A. D. Aiken.*

Ship's Name.	Port of Registry and Nationality.	Official Number.	Gross Tonnage.	Date of Build.	Particulars of Classification.
<i>Arday, Corla + C<sup>o</sup>. N<sup>o</sup> 615.</i>	<i>✓</i>	<i>✓</i>	<i>✓</i>	<i>✓</i>	<i>100 A.1. Class Contemplated.</i>

LENGTH.	BREADTH.	DEPTH.	UNDER DECK TONNAGE.
<i>383.0</i>	<i>51.60</i>	<i>30.28</i>	<i>4800</i>
Frame Depth	2	Ceiling	No
Rule	6 1/2	Sheer	+ 20
	<i>2 x 5 1/2</i>		<i>94.</i>
	<i>- 1.0</i>		<i>Level Tank</i>
			<i>Top</i>
			<i>31.18</i>
			<i>4109.</i>
			<i>4800.</i>

cient of fineness..... *796.793*  
modification necessary }  
ra. 4 (a) to (e)]\* }  
cient as corrected ..... *77.*

{ Stem..... *96* } *144* ÷ 2 = *72* ... Mean *36 | 25.33*  
{ Sternpost..... *48* }  
at 1/2 of the length from { Stem *54* } *81* ÷ 2 = *40.5* ... Mean *73.63*  
al mean Sheer ..... *allowed 74.8 72.81*  
rd mean Sheer [Table, Para. 18] ..... *48.1*  
Difference..... *22.88 24.51* ÷ 4 = *6.127*  
united as Para. 18 (f) ..... *5.42*  
*- 6 1/4*

in Sheer { At front of bridge house.....  
amidships {  
18 (e)] { At after end of forecastle .....  
in Sheer { ? ÷ 2 = *Bridge fitted.*  
18 (d)] {  
uncovered ..... Correction

### ALLOWANCE FOR DECK ERECTIONS :—

ard, Table C..... *5'-6"*  
ion for Length, if required (Para. 12, 13, and 14) ..... *- 5 3/4*  
ard by Table A, corrected for sheer, and for length, }  
if required (Para. 12, 13, and 14) }  
nce ..... *5'-8 1/2 5'-11 1/4*  
tage as below..... *29.17* *29.69%*  
*9.20*

ion for R. Q. Dk. if engine and boiler openings not }  
covered by bridge house (Para. 11) }  
nce for Deck Erections ..... *9 1/2*

Length.	Length allowed.	Height.
<i>36.5</i>	<i>36.5</i>	<i>7'-6"</i>
<i>110.5</i>	<i>110.5</i>	<i>7'-6"</i>
<i>31.75</i>	<i>31.75</i>	<i>7'-6"</i>
Total	<i>178.75</i>	<i>4667.467</i>
of Ship	<i>383.</i>	

ponding percentage }  
ra. 11, 12, 13, or 14) }  
*29.17. 29.69%*

Freeboard recommended amidships from centre of Disc to top of Statutory Deck Line, Wood (Steel) Deck :-	
Fresh Water Line	above centre of Disc
Indian Summer Line	" "
Winter Line	below " "
Winter North Atlantic Line	" "

Moulded Depth as measured..... *32'-8"*  
Addition for Keel below base line for draught record..... *1 1/4* inches.

NOTE.— If the depth is measured when vessel is afloat, the details of measurement should be reported.

### CORRECTION FOR LENGTH.

Length of Ship on Loadline..... *383*  
Length in Table ..... *378.392*  
Difference ..... *4.608*  
Correction for 10ft., Table A. .... *1.6* Table C. *8*  
× Difference divided by 10 ..... *51.44* (if required.) *4.72*  
If 1/10ths length covered divide by 2 *- 1 1/2* *- 3/4*

### CORRECTION FOR IRON DECK.

Proportion covered, if less than 1/10ths length covered ..... *46.67*  
Thickness of usual wood deck, less stringer ..... *3 1/2* *- 1 3/4*

### CORRECTION FOR ROUND OF BEAM.

Breadth at Gunwale amidships..... *51.6*  
Round of Beam ..... *13*  
Normal round..... *12.87*  
Difference ..... *2.13* ÷ 2 = *1.06*  
Proportion of Deck uncovered (Para. 19) ..... *✓*

NOTE.— The round of beam should be reported on the full breadth of vessel at the gunwale.

Freeboard, Table A ..... *8'-7 1/2 8*  
Correction for Sheer ..... *- 5 3/4 6 1/4*  
Correction for Length ..... *7 3/4 - 1 1/2*  
Allowance for Deck Erections ..... *8'-2 1/2 8'-0 1/4*  
Correction for Round of Beam..... *- 9 1/2*  
Correction for fall in Sheer (if any)..... *7 3/4 3*  
Correction for Steel Deck (if required) ..... *- 1 3/4*  
Additions for non-compliance with provisions of }  
Para. 11 (d) and (e) }  
Other Corrections (if any) ..... *1 3/4*

Winter Freeboard ..... *7'-5 1/4*  
Summer Freeboard (*5 1/2 - 6 1/2*) ..... *6*  
Indian Summer Freeboard ..... *6 1/4 7 1/4*  
N.A. Winter Freeboard ..... *6 1/2 1 1/4*

Correction necessary because clearside amidships, measured in accordance with the Statute is not taken at the intersection of the wood or steel deck with side. *1 3/4*

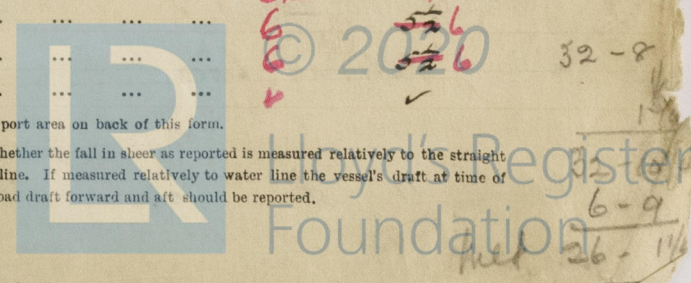
Winter Freeboard from deck line ..... *7'-5 3/8*  
Summer " " " ..... *6'-11 1/2 9*  
Indian Summer " " " ..... *6'-8 3/8*  
N.A. Winter " " " ..... *✓*

Freeboard from centre of Disc to top of Statutory Deck Line, Wood (Steel) Deck :-  
Fresh Water Line ..... *6'-9"* *6'-11 1/2 6.9*  
Indian Summer Line ..... *6 1/2* *6 1/2*  
Winter Line ..... *6* *5 1/2 6*  
Winter North Atlantic Line ..... *✓*

† State dimensions of freeing port area on back of this form.  
‡ The Surveyor should state whether the fall in sheer as reported is measured relatively to the straight line of keel or to the water line. If measured relatively to water line the vessel's draft at time of survey, and also the usual load draft forward and aft should be reported.

*Copies to Liverpool 9.12.25*

003075-003082-0234





Do all the Frames extend to the top height in the Poop? *Yes.* Raised Quarter Deck? *✓* Bridge House? *Yes* Forecastle? *✓*  
 To what height do the Reverse Frames extend? *✓*  
 Has the Poop or Raised Quarter Deck an efficient Iron Bulkhead at the fore end? *Yes.*  
 Give particulars of the means for closing the openings in Bulkhead *Wood doors (or steel plates).*  
 Is the Poop or Raised Quarter Deck connected with the Bridge House? *No* Has the Bridge House an efficient Bulkhead at the fore end? *Yes*  
 Give particulars of the means for closing the openings in Bulkhead *No openings.*  
 What is the thickness of the Bridge Front plating? *To Rule.* and Coaming plate? *To Rule.*  
 Give scantlings and spacing of the Stiffeners *To Rule.*  
 Are bracket plates fitted at each end of the Stiffeners? *To Rule.* Are hor'l. brackets fitted connecting Bridge Bulk'd. with Bulwarks? *Yes.*  
 Has the Bridge House an efficient Iron Bulkhead at the after end? *Yes.*  
 How are the openings closed? *Wood doors (or steel plates).*  
 Is the Forecastle at least as high as the main or top-gallant rail? *Yes.* Has the Forecastle an efficient Iron or Wood Bulk'd. at after end? *Yes*  
 Are the Engine and Boiler openings covered by a Bridge, Poop, Raised Quarter Deck, or enclosed by a Strong Iron or Steel Deckhouse? *Bridge.*  
 If the openings are not so protected are the exposed parts of the Casings efficiently constructed? *✓*  
 Give thickness of plating; scantlings and spacing of Stiffeners *✓*  
 What is the height of the exposed Casings? *✓* Are suitable means provided for closing all openings in them in bad weather? *✓*

Are the Weather Deck Hatchways efficiently constructed and at least equal to the requirements of Section 28 of the Rules for 1904-5? Give particulars below:— *Yes.*  
*on Bridge Deck.*

Position and Size.	N <sup>o</sup> 1. 22'-6" x 18'-0"		N <sup>o</sup> 2. 39'-0" x 18'-0"		N <sup>o</sup> 3. 21'-0" x 18'-0"		N <sup>o</sup> 4. 30'-0" x 18'-0"		N <sup>o</sup> 5. 24'-0"	
Item.	Ship.	Rule.	Ship.	Rule.	Ship.	Rule.	Ship.	Rule.	Ship.	Rule.
Height above top of DECK	30"		30"		30"		30"		30"	
COAMING Thickness	Sides.....	44	44		44		44		44	
	Ends.....	44	44		44		44		44	
SHIFTING BEAMS OR WEB PLATES.	Number .....	Not	Not		Not		Not		Not	
	Section and Scantlings .....	Decided	Decided.		Decided.		Decided.		Decided.	
	Material .....									
* FORE AND AFTERS.	Number .....									
	Section and Scantlings .....	✓	✓		✓		✓		✓	
	Material .....									
HATCHES Thickness .....	3"		3"		3"		3"		3"	
Remarks.....										

\* The depth of Fore and Afters should be stated from the underside of the hatches in all cases.

(If the sill of the lowest side scuttle will be less than 6 inches above the Indian Summer Load Line if assigned under the tables, state vertical distance from top of deck at side amidships to lower edge of lowest side scuttle.)

The following information is to be given in all Cases of vessels dealt with under Paras. 11, 12 (under 15 feet Moulded depth) and under Shelter Deck Rules.  
 What is the thickness of the Bridge Sheerstrake? *Strake between Main and Bridge Sheerstrakes?*

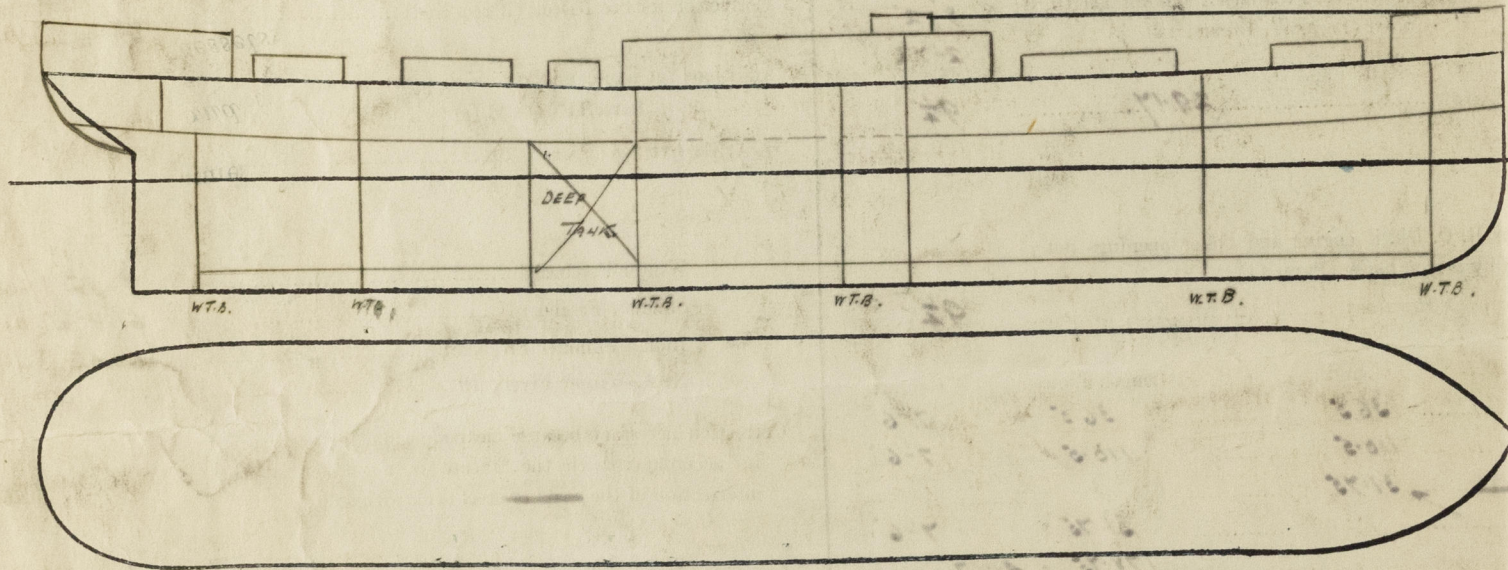
Delete the words *The Crew are, are not, berthed in the bridge house.*  
 that do not apply *The arrangements to enable them to get backwards and forwards from their quarters are, are not satisfactory.*

Length of Bulwarks in well

Area of Freeing Ports required by Para. 11 (e) each side of vessel = Sq. ft.

Ft. Tenth.	Ft. Tenth.	No.	} Freeing Ports (each side of vessel) =	Sq. ft.
×	×			
×	×			

Total deficiency or excess = Sq. ft.



Show hereon line of Floors or Tank Top with position of any Breaks in same; also height of Peak Tank tops, &c., &c.

State any special features in the construction of the Vessel *Cruiser stern. Approved Midship Section, profile + deck plans enclosed.*

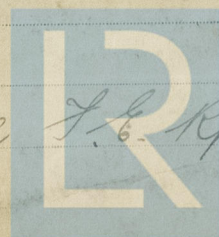
Builder's name and yard number *Messrs. Barclay, Curle + Co. Ld. N<sup>o</sup> 615.*

Names of sister vessels *✓*

Owners *Ellerman Lines.*

Address

Fee £ *14 : 0 : 0* Received by me *See S.E. Rpt.*



© 2020

Lloyd's Register Foundation