

YARD No 83 — MIDSHIP SECTION — SCALE 1:25.

DIMENSIONS

LENGTH BETWEEN P.P.	496'0" 151.78 M.
BREADTH MOULDED	65'11" 20.040
DEPTH MOULDED TO UPPERDECK	55'11" 16.947
HEIGHT OF POOP	7'8" 2.387
HEIGHT OF BRIDGE AND FORECASTLE	7'6" 2.286

CLASS: LLOYD 100 A. CARRYING PETROLEUM IN BULK.

LONGITUDINAL FRAMES IN CENTERTANKS AND TRANSVERSE FRAMES IN SIDETANKS.

ALL BULB SECTIONS ARE BASED ON THE 1924 STANDARDS.

NUMERALS

FIRST LONGITUDINAL NUMERAL	LWD	= 496.3592	= 17816
SECOND	LX(B+D)	= 496.3592	= 50498
PROPORTION	D	= 496.3592	= 15.81

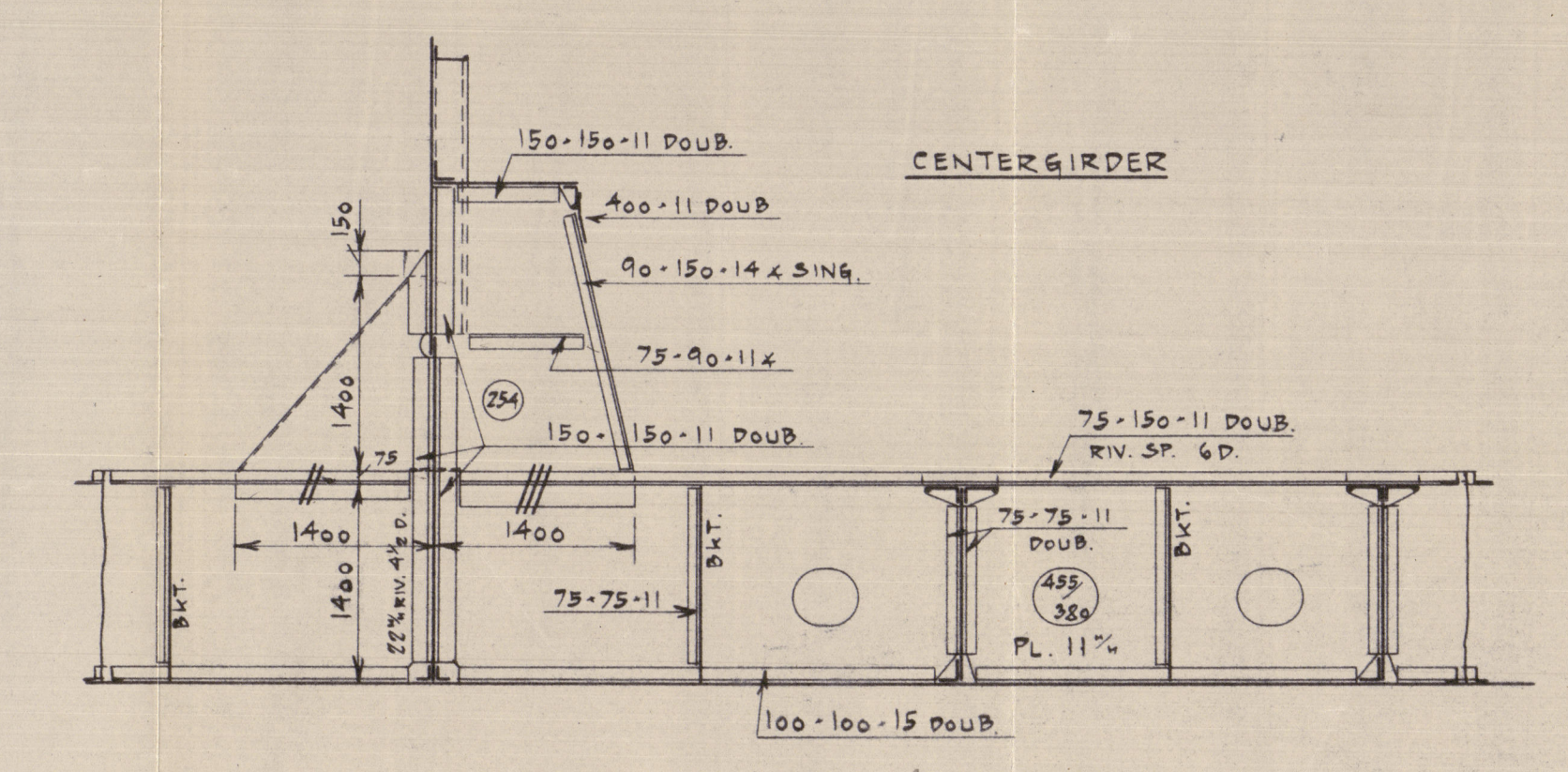
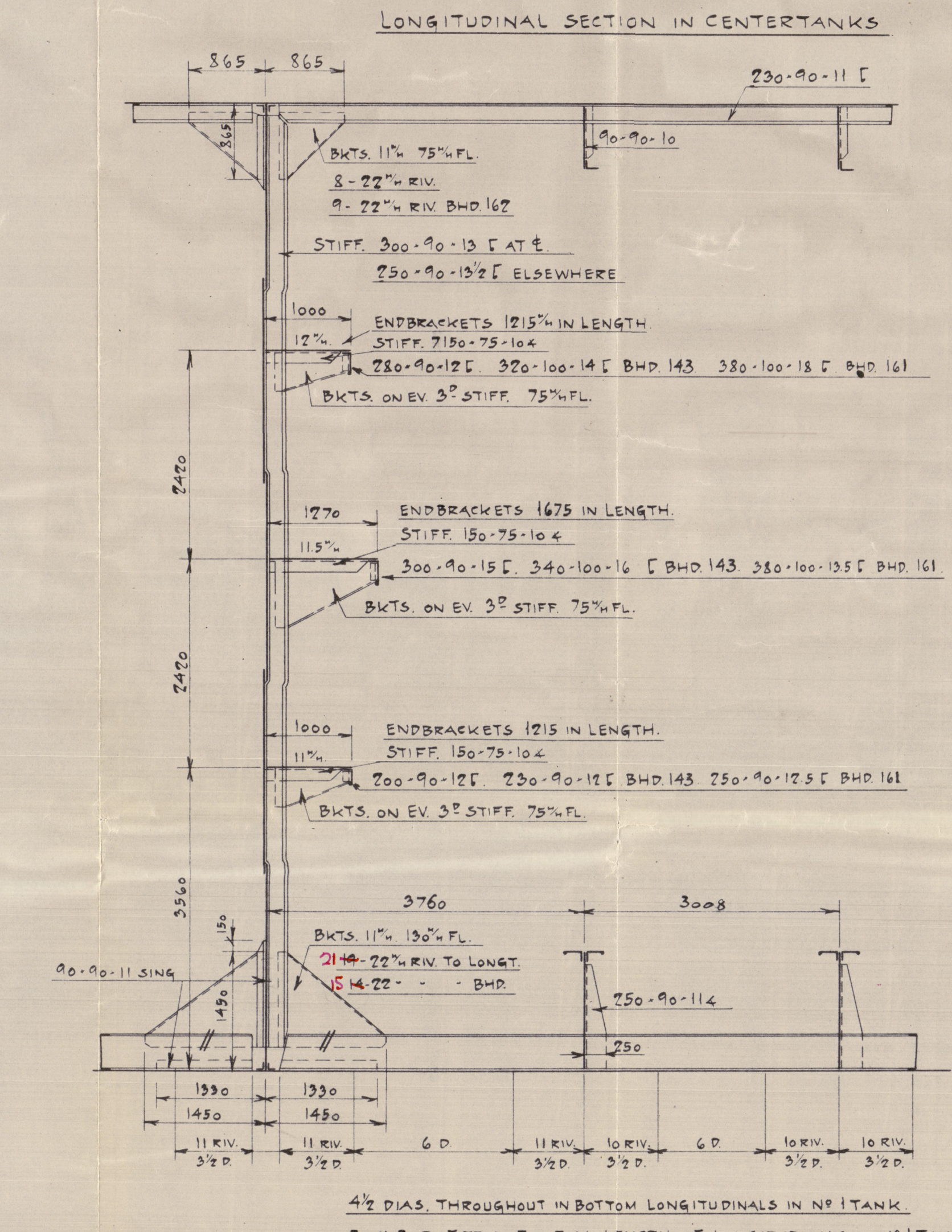
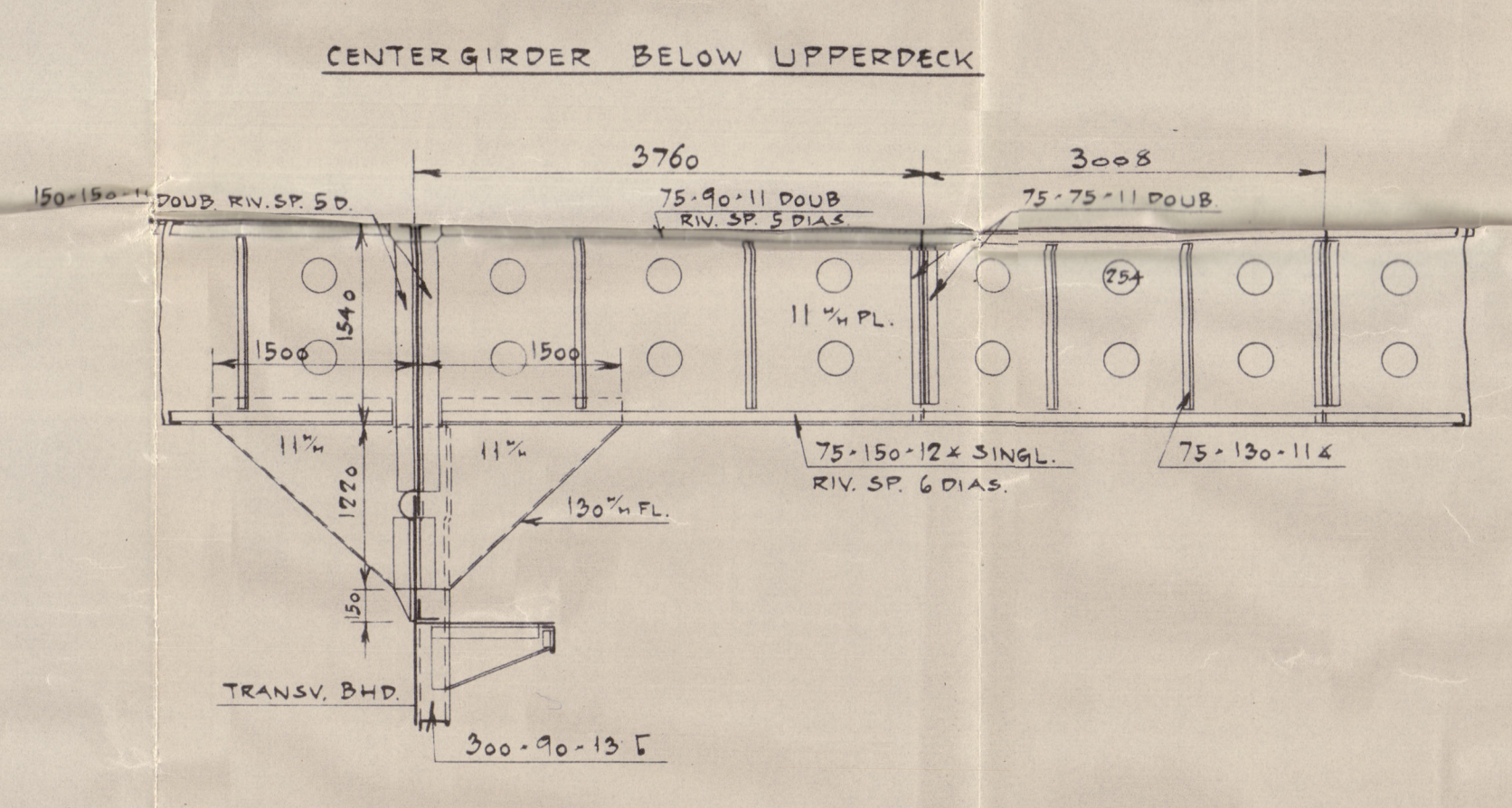
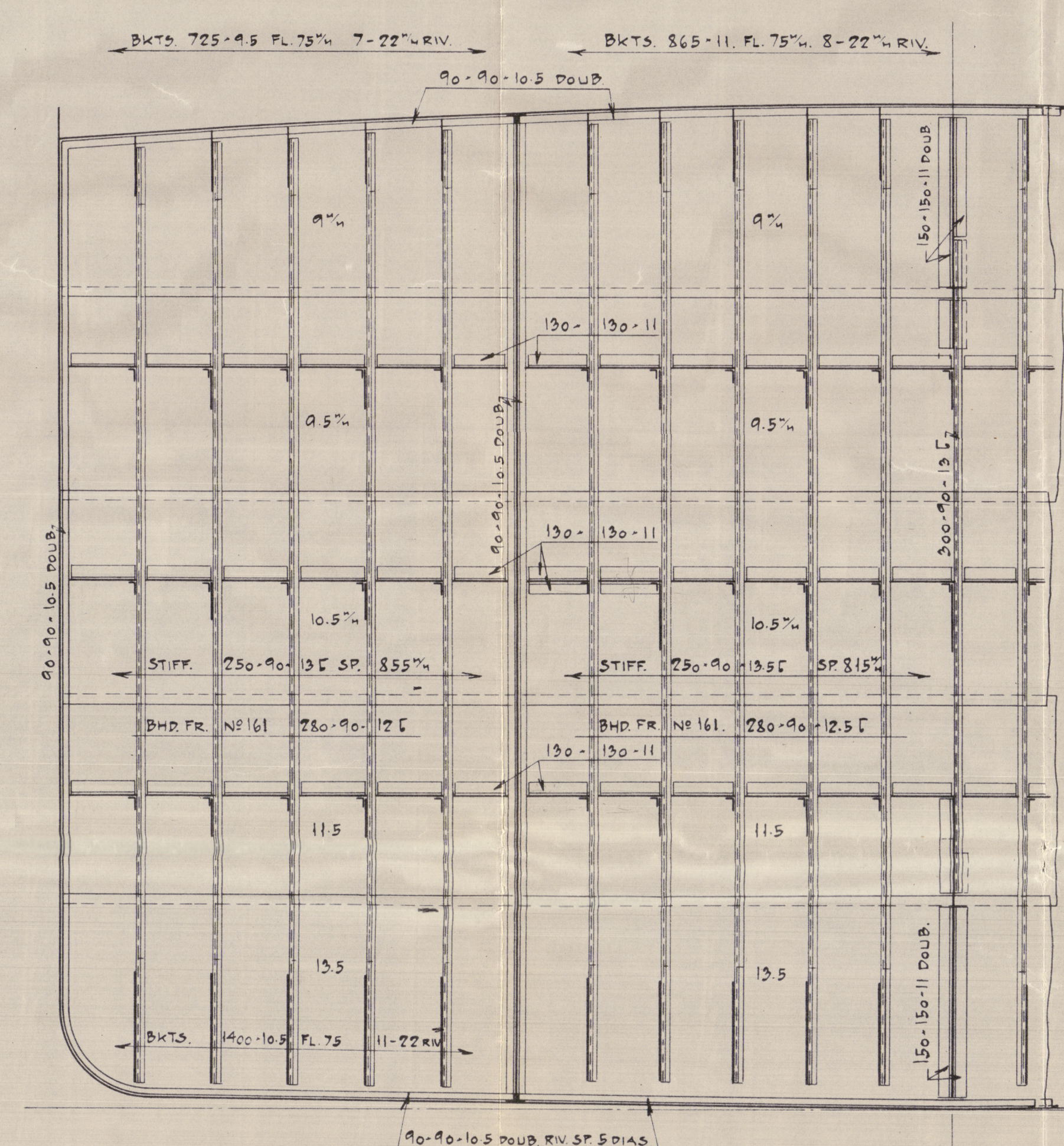
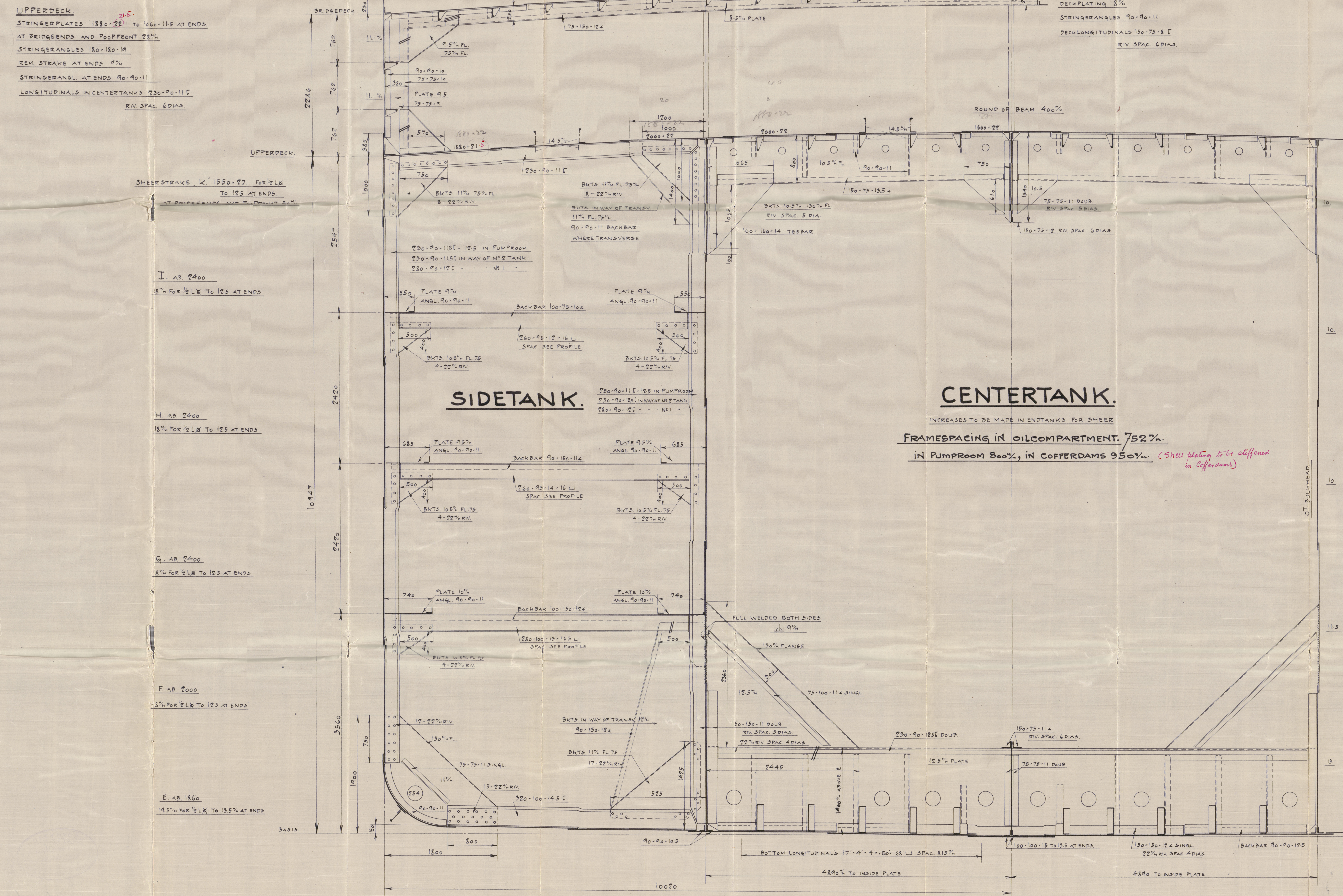
EQUIPMENT No EN (LLOYD REGISTER OF SHIPPING)

L = (B+D) = 496.3592	= 50498
POOP = 75.423.72	= 545
BRIDGE = 75.423.72	= 545
FORECASTLE = 75.423.72	= 545
DECKHOUSE AND CASING ON POOP = 75.423.72	= 545
DECKHOUSE ON BRIDGE = 75.423.72	= 545
EN = 51934	

EQUIPMENT LETTER G

3 BOWER ANCHORS STOCKED	7 AT 80 CWT. COLLECTIVE WEIGHT 287 1/2 CWT.
1 STREAM ANCHOR	700 - EX STOCK
300 PMS 2 1/2" STUD CHAIN CABLES (MINIMUM WEIGHT 1640 CWT. (SEE OWNER REQUIREMENTS 2 1/2" TAYCO STEELCAST CHAINS))	
150 - 1 1/2" CHAIN OR 5 1/2" STEELWIRE (6-24 SPEC. FLEX) FOR STREAM ANCHOR	
150 - 5 1/2" STEELWIRE (6-24 SPEC. FLEX) FOR TOWLINE	
2100 - 8' HEMP OR 2 1/2" STEELWIRE (6-18 FLEX) FOR HAWSDERS	
2100 - 8' - 2 1/2" - (6-18 FLEX) - WARPS	

UPPERDECK
STRINGERPLATES 180x20 PL. 150x115 AT ENDS
AT BRIDGES AND FORECASTLE
STRINGERPLATES 180x180 PL.
REV. STRAKE AT ENDS 4 1/2"
STRINGERPLATE AT ENDS 80x100 PL.
LONGITUDINAL IN CENTERTANKS 75x100 PL.
REV. SPAC. 60x100



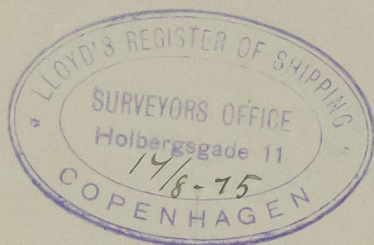
6 dense 83
Amended Midship Section
Sdwd Cpr 7/12/18

ODENSE STÅLSKIBSVAERKT
2474 288096

7/12/18

Andstus Section
for
Yard No. 88
Odense Skaalskibsværft A/S,
Odense (2)

* M/s. *Kabrine Marsk* of *Fredricia*
Copenhagen Report No. 11756



© 2020

Lloyd's Register
Foundation

003092-003099-0106