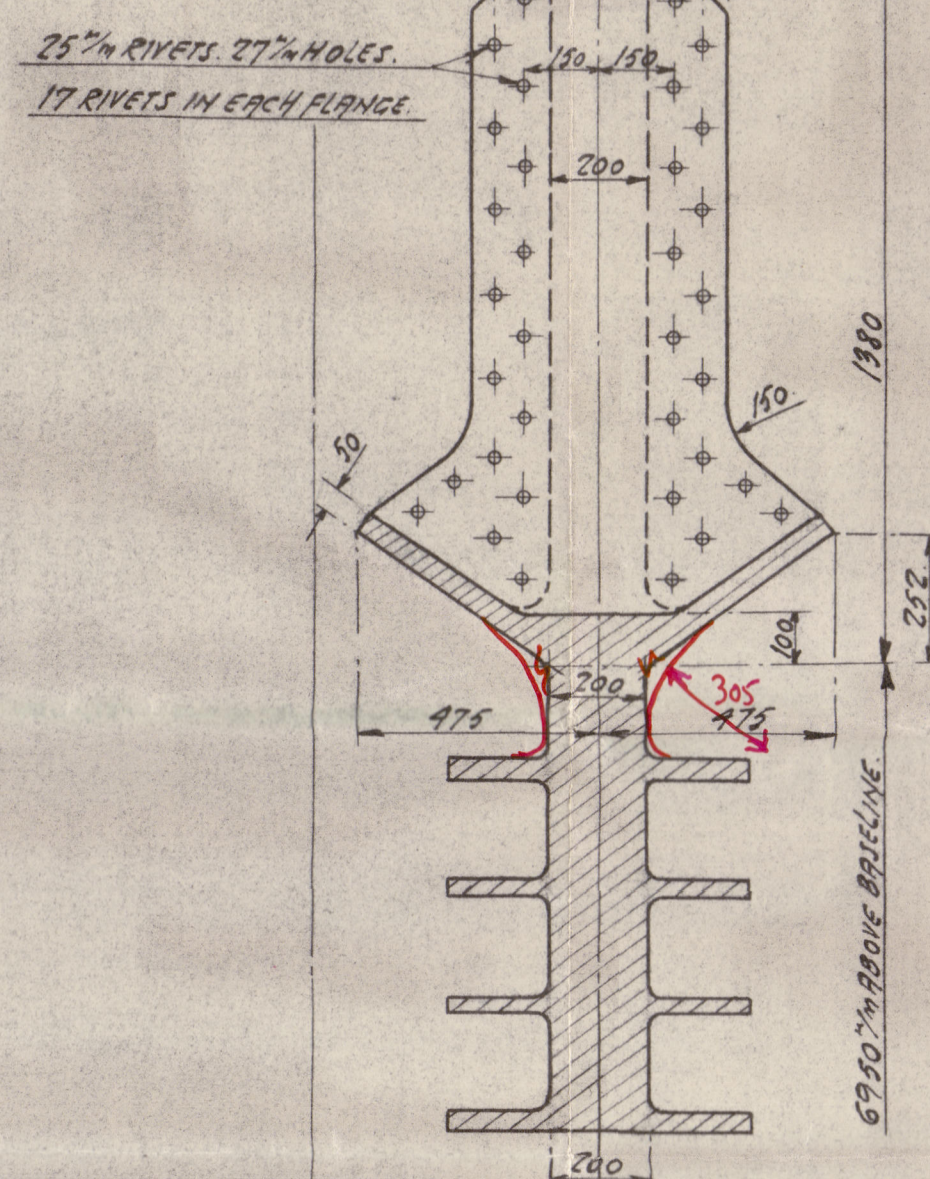


18 JAN 1938

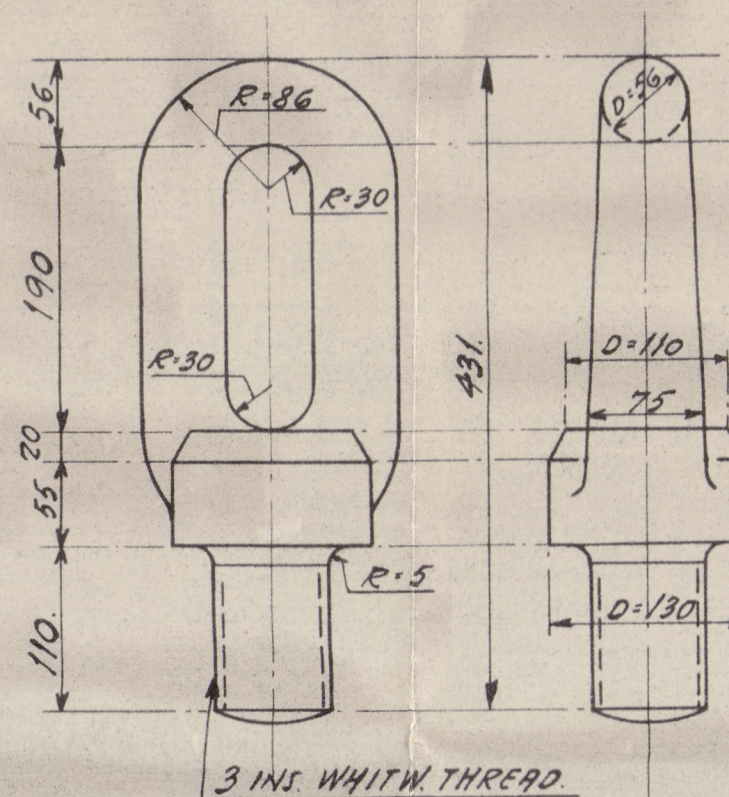
SECTION AT FRAME NO. 1

LOOKING AFT



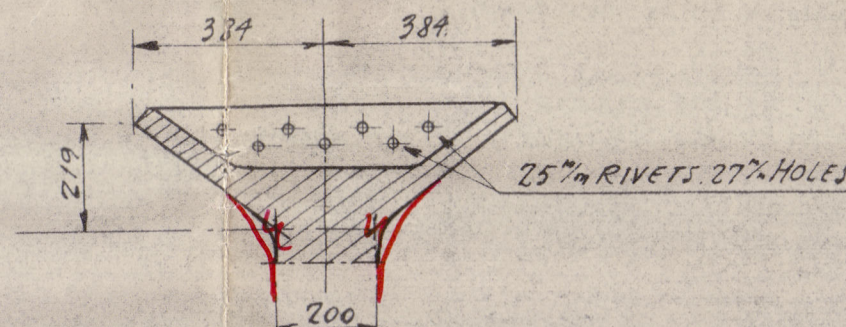
EYEBOLT FOR LIFTING RUDDER

SCALE 1:5



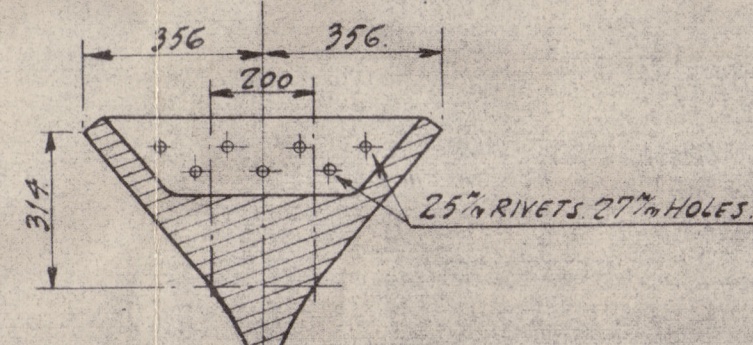
WEB ON FRAME NO. 2

LOOKING AFT



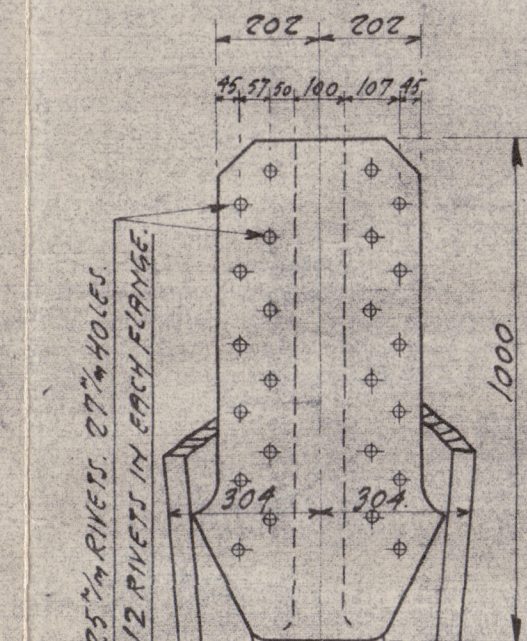
WEB ON FRAME NO. 3

LOOKING AFT



STERNPOST

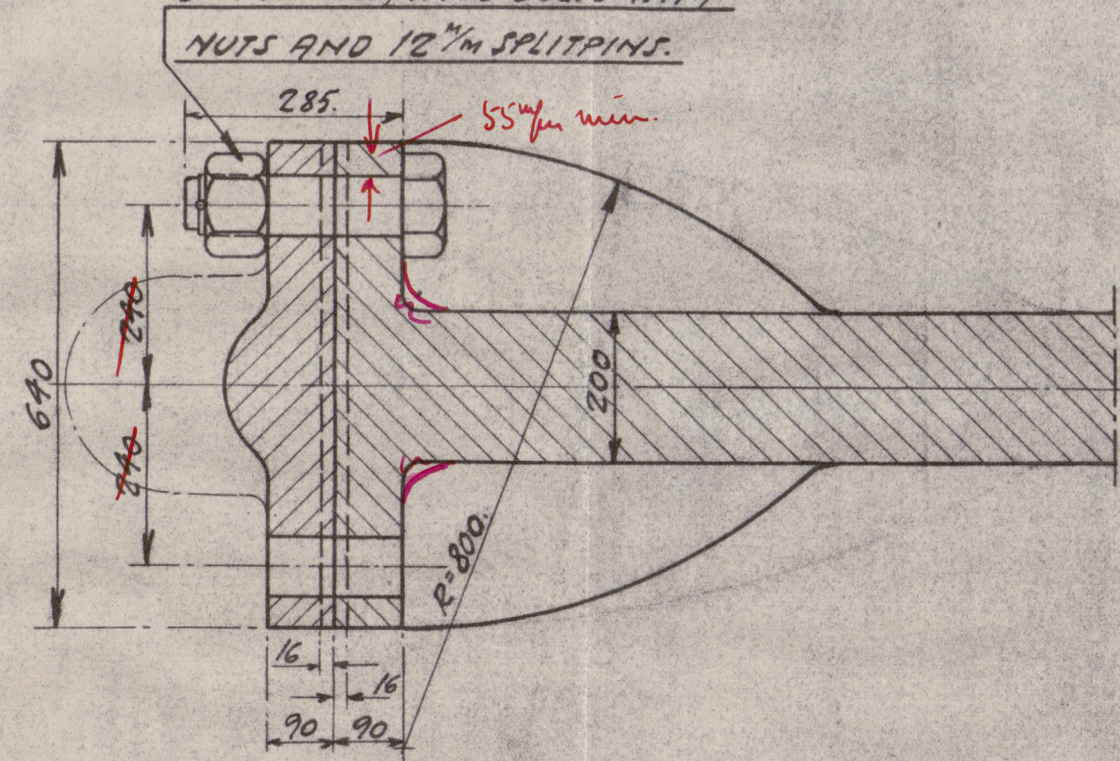
LOOKING AFT



SECTION A-B

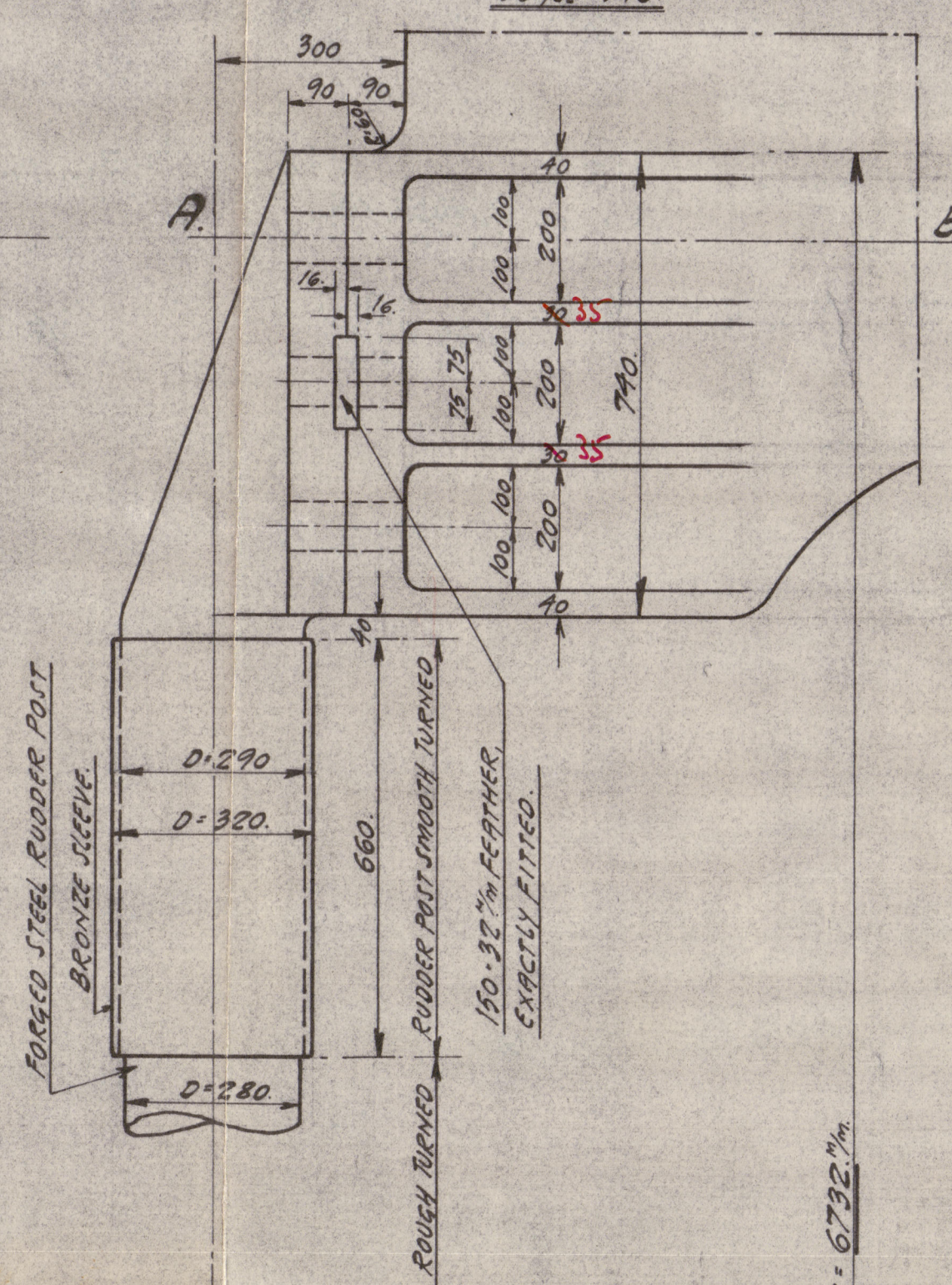
SCALE 1:10

SIX 3/4 INCH FITTED BOLTS WITH NUTS AND 1/2 INCH PLITPIN.



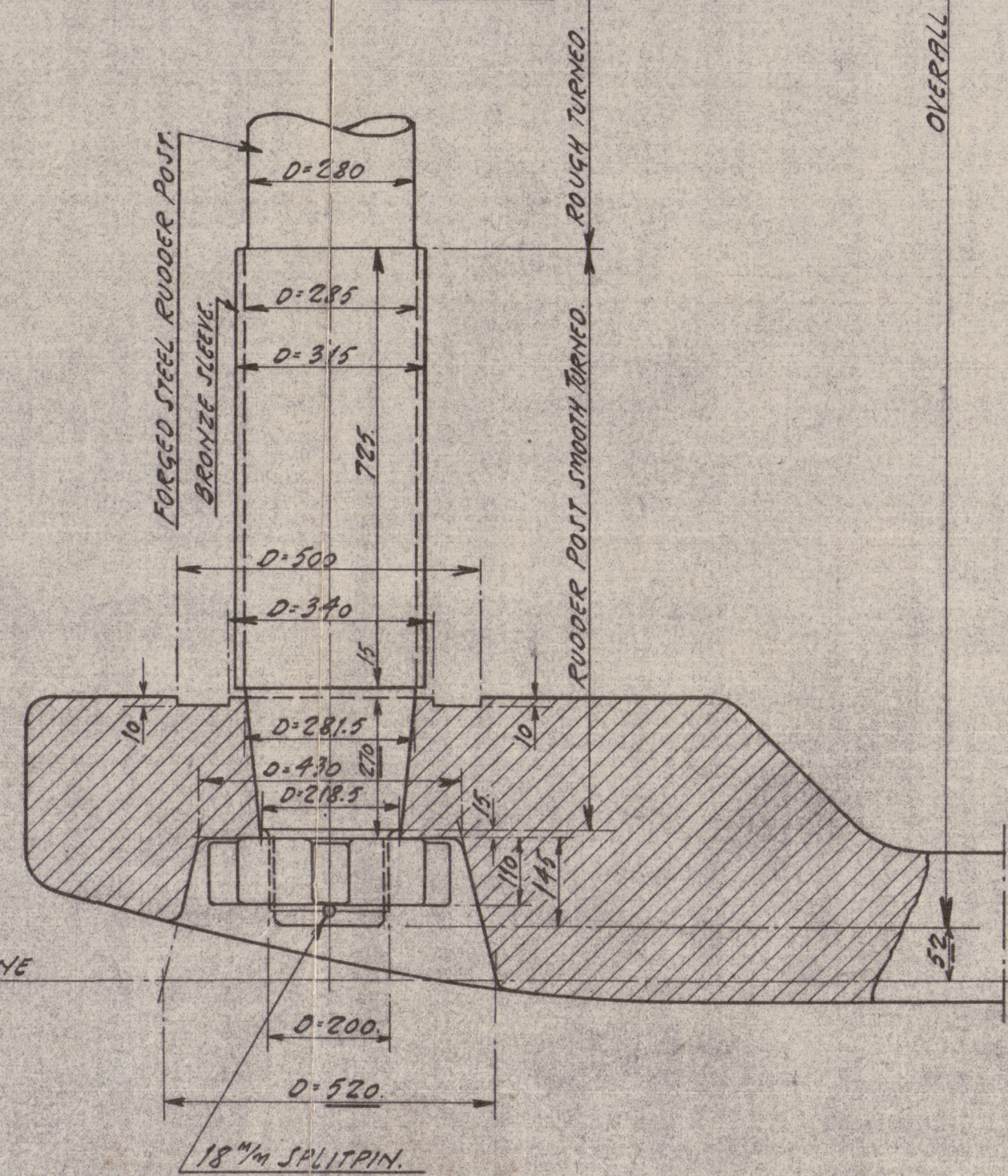
TOP CONNECTION OF RUDDERPOST

SCALE 1:10



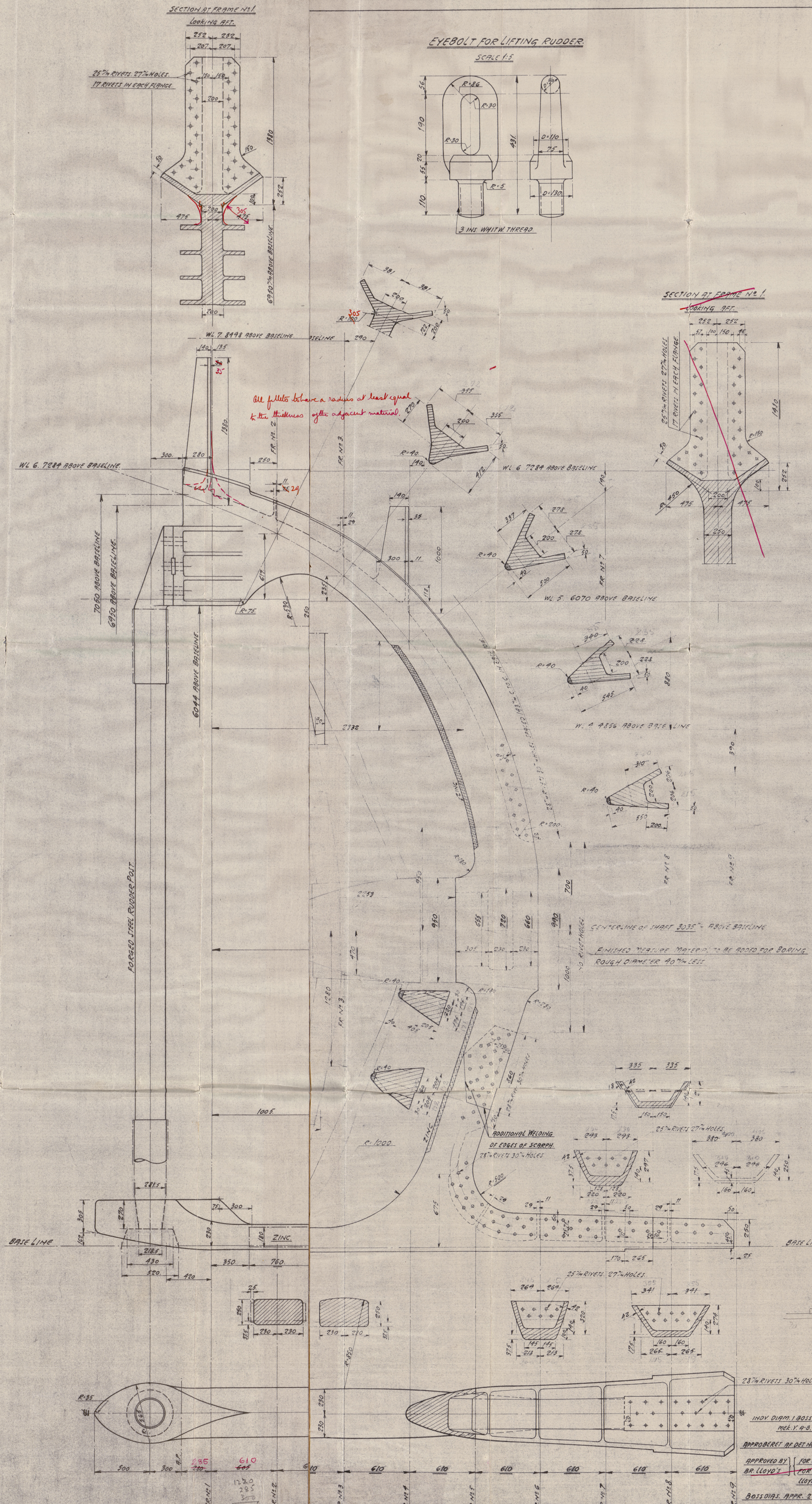
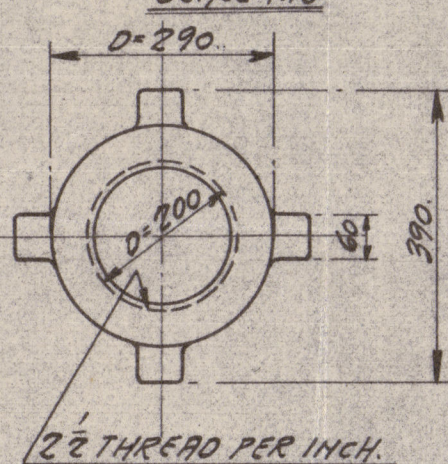
BOTTOM CONNECTION OF RUDDERPOST

SCALE 1:10



NUT AT BOTTOM END OF RUDDER POST

SCALE 1:10



CLARK & CO. LTD. 259, 30

11.1.38
27/11/38
APPROVED BY: [Signature]
FOR SPEED & STABILITY, SEE LLOYD'S LETTER, 10.10.38.
BOSS DIPS. APPR. 23.10.38.

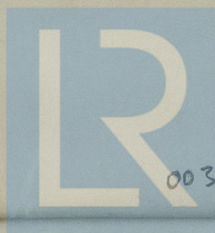
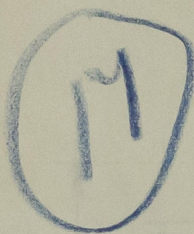
Odense. 83

Stem frame for
Simplex Reader



"Katherine Maetsh"

(Gm. 11756)



© 2020

Lloyd's Register
 Foundation

003092-003099-0100