

MIDSHIP SECTION.

S.S. STANLODGE

LENGTH B.P. 395'-0" x 53'-9" BREADTH MLD x 26'-10 1/2" DEPTH MLD

CLOSED SHELTER DECKER.

DRAUGHT 18" IN EXCESS OF THAT CORRESPONDING TO A FREEBOARD WHICH COULD BE ASSIGNED TO THE VESSEL WITH A TONNAGE OPENING

CLASS 100 A1 WITH FREEBOARD.

ANCHOR 63 3/4 CWT.
COLLECTIVE WEIGHT 127 1/2 CWT.
NOT SUPPLIED
PORT STARD 2 1/2" STUD CHAIN CABLE AS 1 1/2" FLYCO-STEEL CABLE
90 FATHOMS 1/4" STEEL WIRE
120 " 5 " 6 x 12 F.S.W. TOWLINE
2-90 " 1/2" HEMP OR 2 1/4" F.S.W. HAWSER
2-90 " 7 " 2 1/2" F.S.W. WARPS
STREAM ANCHOR 17 1/2 CWT. EX. STOCK.

SHEERSTRAKE 1- 75 1/2 x 60 FOR 1/2 LENGTH TO 46 AT ENDS. BUTTS OVERLAPPED AND QUAD. RIVETED FOR 1/2 LENGTH TO TREBLE AT ENDS.

STRAKE BELOW SHEERSTRAKE 1- 77 1/2 x 60 FOR 1/2 L. TO 46 AT ENDS. BUTTS OVERLAPPED & QUAD. RIVETED FOR 1/2 LENGTH TO TREBLE AT ENDS.

FRAME SPACING

30' FROM AFTER PEAK TO 128 FRAME
27' FROM 128 FRAME TO COLLISION BHD.
24' IN PEAKS.

SIDE SHELL FROM UPPER TURN OF BILGE TO STRAKE BELOW SHEERSTRAKE 1-60 FOR 1/2 LENGTH TO 46 AFT AND 58 FORWARD. BUTTS OVERLAPPED & TREBLE RIV. THROUGHOUT. SIDE PLATING IN WAY OF PAINTING INCREASED AS PER PROFILE.

NO SIDE STRINGERS
PLATES CONNECTED TO STERNFRAME 1-60
BOSS PLATES 1-68

FORGINGS

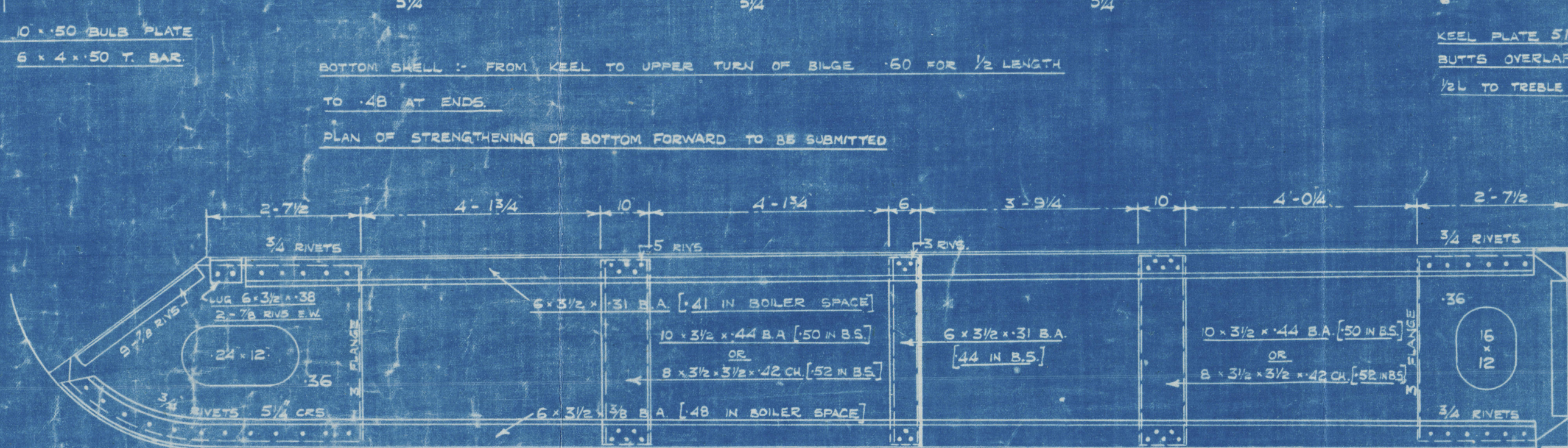
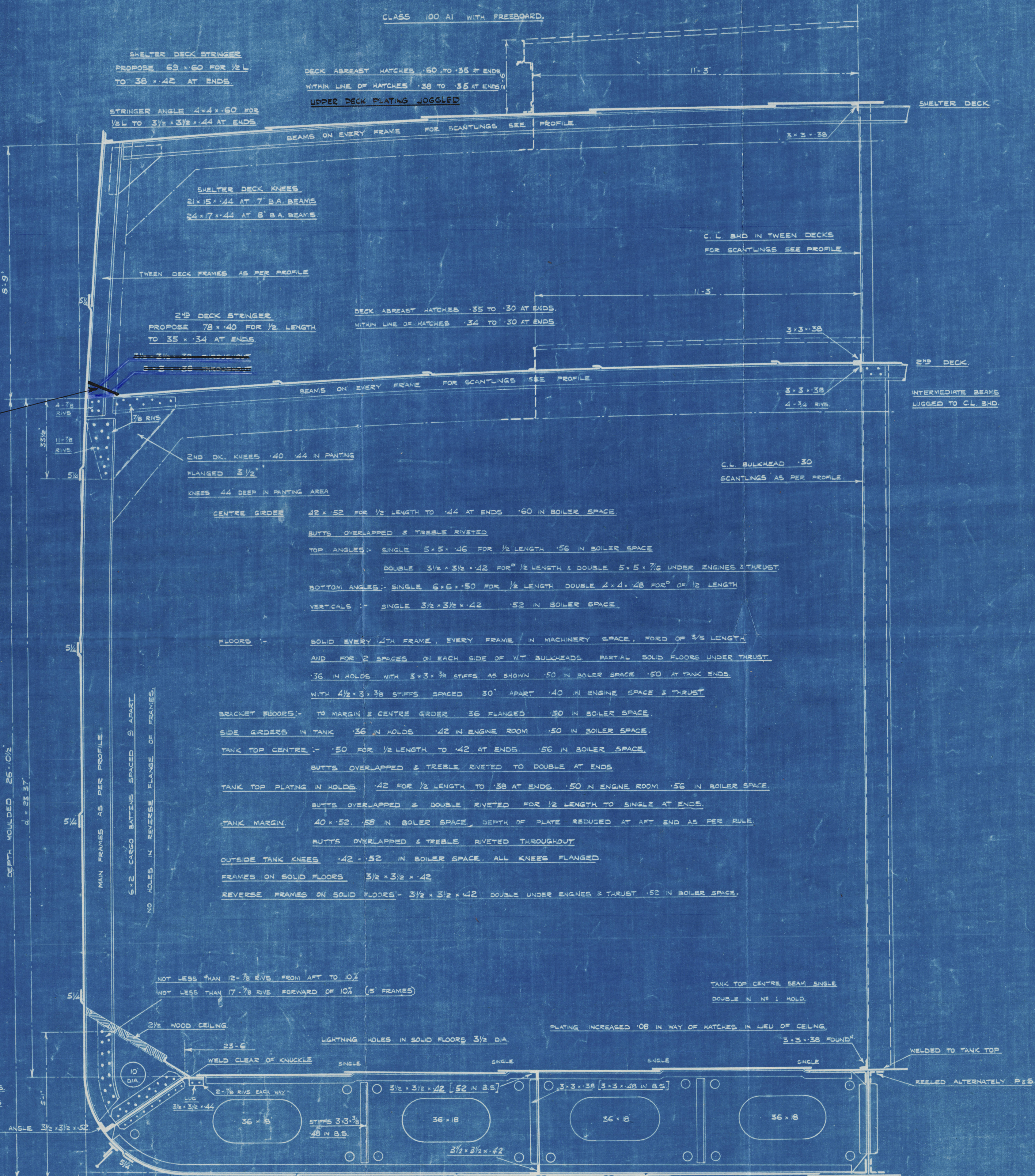
STEM 10" x 2 1/2" ROLLED STEEL
STERNFRAME & RUDDER POST
PLAN TO BE SUBMITTED

O.T.K. TO MARGIN FROM AFT TO 10% SINGLE 6 x 6 x 42 13-78 RVS.
O.T.K. TO MARGIN FORE OF 10% SINGLE 6 x 6 x 50 (5' FRAMES)

FLOOR ENDS TO MARGIN FROM AFT TO 10% 6 x 3 1/2 x 42 13-78 RVS.
IN BOILER SPACE 6 x 3 1/2 x 52 13-78 RVS.
FORE 10% 6 x 6 x 50 SINGLE.

GUSSET PLATES 1- CONTINUOUS BETWEEN TANK MARGIN PLATE BUTTS.
RIVETED TO O.T.K. PLATE WELDED TO TANK TOP
6-78 RVS. FROM AFT TO N° 1 HOLD
9-78 RVS. FORWARD IN N° 1 HOLD

GUSSET PLATES 1- 12 x 40 x 50 IN BOILER SPACE PLANGED 2" IN HOLDS IN WAY OF CEILING
18 x 40 IN PAINTING
PLANGE OF O.T. KNEE 6 1/2" IN WAY OF GUSSET PLATE.



Nº 256

3/5 Stanlodge

Pickersills Yard No 256

Midships Section
(as fitted)

SUNDERLAND RPT. NO. 33576

"Stanlodge"

other

PLANS TRANSFERRED
TO SISTER VESSEL

Galaxyoti

RETAIN



© 2020

Lloyd's Register
Foundation

003092-003099-0225