

PLAN N°2 "BRITISH PEER."

FRAMING PROFILE.

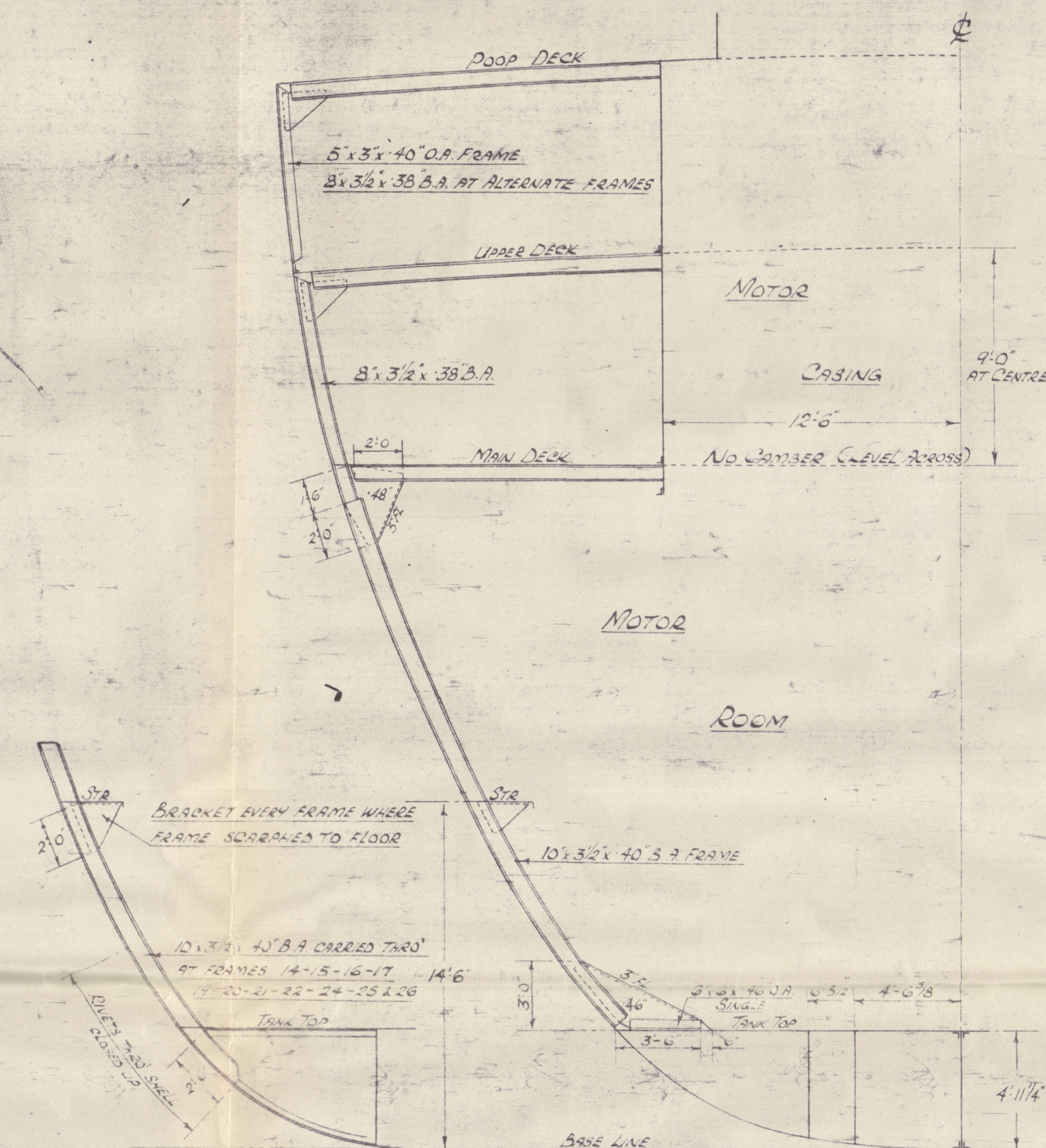
DIMENSIONS :- 463'-0" B.P. x 61'-6" x 34'-0" MLD.

TO CLASS LLOYDS 100 A.1. "CARRYING PETROLEUM IN BULK."

LONGITUDINAL FRAMING AT BOTTOM AND DECK.

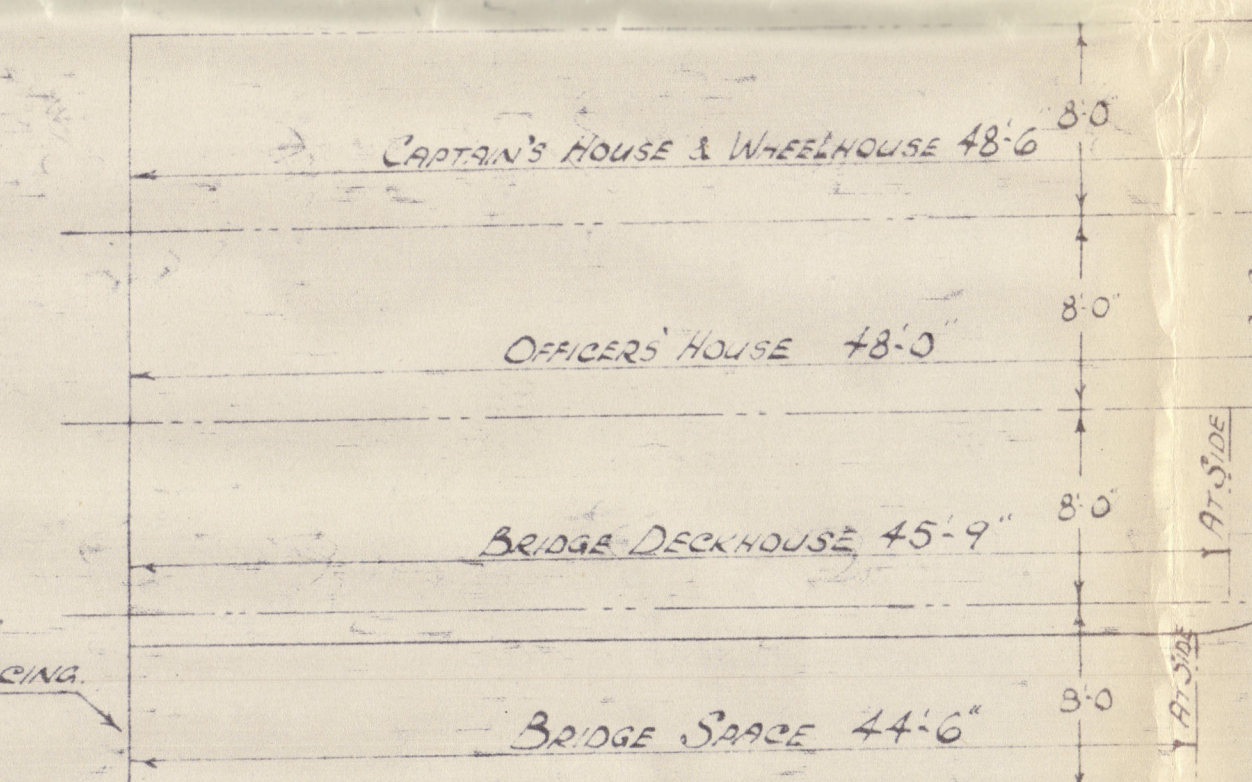
ALL BULB ANGLE AND CHANNEL SECTIONS ARE N.B.S.

ALL BULB PLATE SECTIONS ARE O.B.S.



TYPICAL SECTION WHERE FRAMES SCARFED TO FLOOR

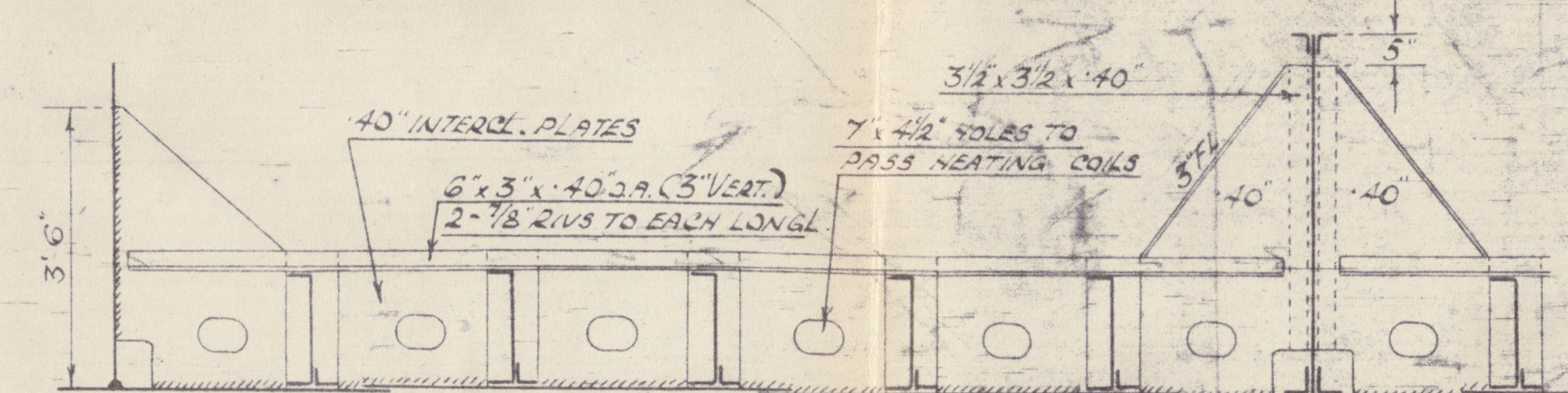
SECTION THRO' MOTOR ROOM AT FRAME 29



BRIDGE END PLATING 30\"/>

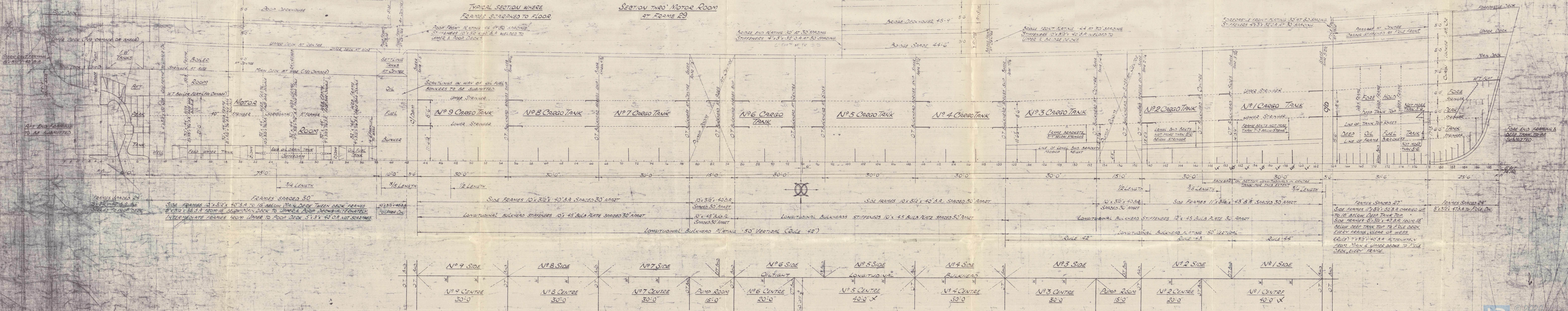
BRIDGE END PLATING 30\"/>

TYPICAL SECTION THRO' DEEP TANK



INTERCOSTAL TRANSVERSES IN N°1 CENTRE TANK WHERE MARKED X

INTERCOSTAL TRANSVERSES TO BE FITTED BETWEEN THE BOTTOM LONGITUDINALS IN N°1 CENTRE TANK WHERE MARKED X. 3\"/>



PLAN VIEW AT LONGITUDINAL BHD. PORT SIDE

X SCANTLING OF END BULKHEADS IN WAY OF 40'-0\"/>

BRITISH PEER ★
LITHGOWS YARD No 1043
PROFILE As BUILT

Glenock Dist Entry Report Number 24/92.

RECORDS DEPT
LONDON

2

RETAIN



© 2020

Lloyd's Register
Foundation

003116-003123-0002