

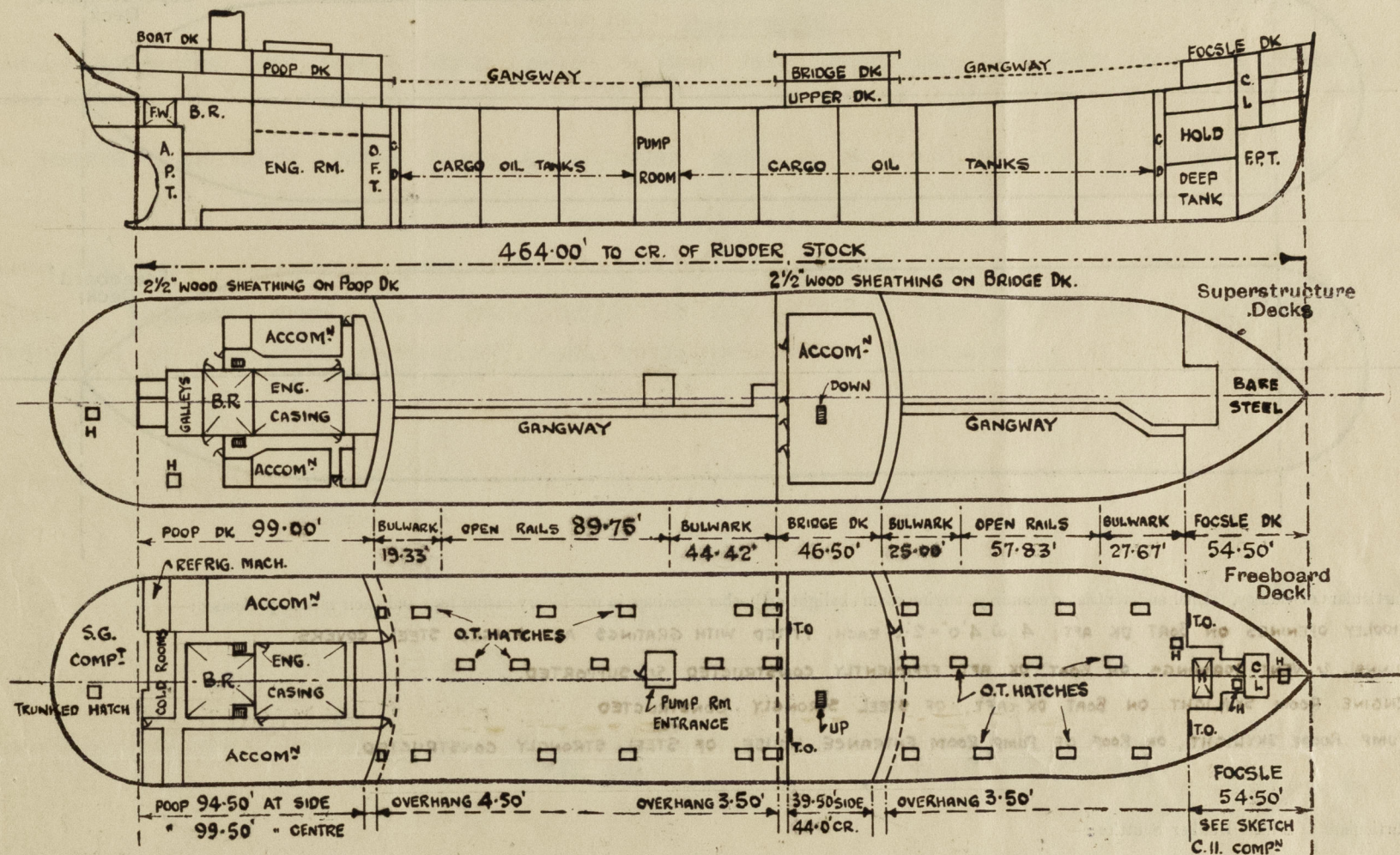
# Lloyd's Register of Shipping.

## SURVEYS FOR FREEBOARD.

### (CONDITIONS OF ASSIGNMENT.)

Ship's Name **BRITISH RANGER** Port of Survey **GLASGOW**  
 Official Number **181916** Surveyor's Signature *W. Macmillan*  
 Nationality and Port of Registry **BRITISH. LONDON.** Date of Survey **WHILST BUILDING.**

Disposition and dimensions of superstructures, trunks, deckhouses and machinery casings to be inserted in the diagrams and tabular statement :-



Particulars of Superstructures, Trunks, Casings, Deckhouses.

	Coaming	Plating	Stiffeners	Spacing	End Attachments of Stiffeners	Size of Openings	Height of Sills	Height of Casings
Poop Bulkhead ...	-	46" / 44"	10x3 1/2 x 46 B.A. / 10x3 1/2 x 40 B.A.	33" / 30"	WELDED T. & B.	2 @ 5'0" x 3'0"	15"	8'0"
Raised Quarter Deck Bulkhead ...	-	-	2 WEBS F. & A. / 5 STEEL BHDS "	-	-	-	-	-
Bridge, After Bulkhead ...	-	34" / 30"	4x3 x 36 O.A. / 4x3 x 32 O.A.	33" / 30"	OVERLAPS / BOUNDARY BARS	2 @ 4'1" x 3'1"	18"	8'0"
Bridge, Forward Bulkhead ...	-	46" / 44"	10x3 1/2 x 40 B.A.	33" - 30"	WELDED T. & B.	1 @ 5'0" x 3'0"	18"	8'0"
Forecastle Bulkhead } AFT END.	-	34"	4x3 x 36 O.A.	33"	RIVETED TO BEAMS ON F. & A. BHDS.	2 @ 4'1" x 3'1"	19"	8'0"
Trunk, Aft } ELSEWHERE..	-	30"	4x3 x 32 O.A.	27"		1 @ 4'3" x 2'3"	18"	"
Trunk, Forward ...	-	-	-	-	-	-	-	-
Exposed Machinery Casings on Freeboard or Raised Quarter Decks ...	-	-	-	-	BKTS AT TOP IN WAY OF FUNNEL. OVERLAPS OK BAR AT BOTTOM.	2 @ 4'3" x 2'3"	15"	8'3/2"
Exposed Machinery Casings on Superstructure Decks BOILER CASING...	-	30"	3x2 1/2 x 5/16 O.A.	30"	RIVETED TO BEAMS AT TOP NO ATTACHMENT AT BOTTOM.	2 @ 5'0" x 2'6"	21"	8'0"
Machinery Casings within trunks not fitted with Class I Closing Appliances... Poop Space	30"	26"	3x2 1/2 x 5/16 O.A.	30"	WELDED T. & B.	1 @ 4'3" x 2'3"	17"	7'6"
PUMP ROOM ENTRANCE Deckhouses on Flush Deck Ships	40"	40"	5x3 x 5/16 O.A.	26"	WELDED T. & B.	1 @ 4'3" x 2'3"	17"	7'6"

Particulars of Closing Appliances (state if capable of being manipulated from both sides).

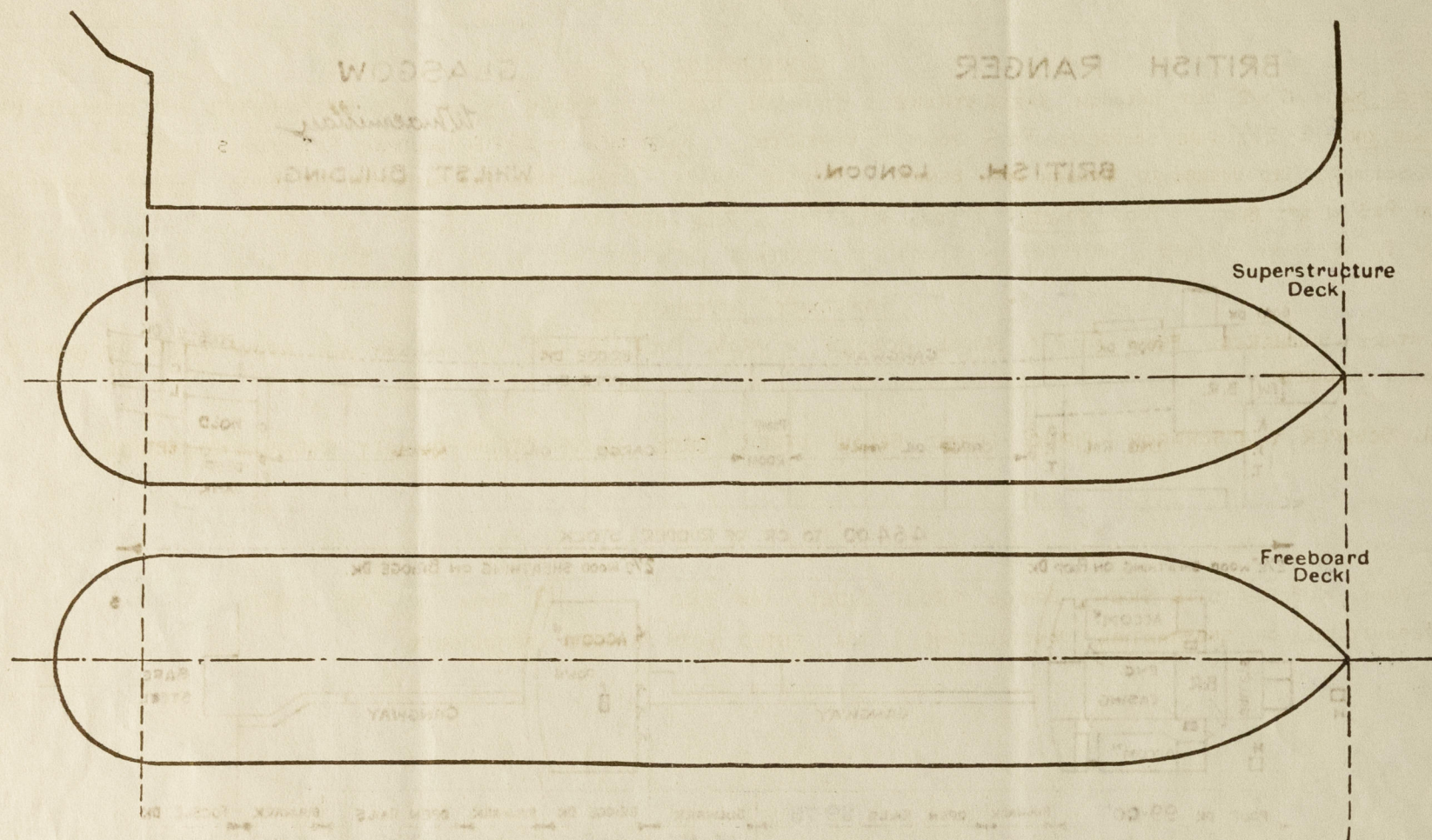
Poop Bulkhead ...	2 HINGED STEEL W.T. DOORS. MANIPULATED FROM BOTH SIDES
Raised Quarter Deck Bulkhead ...	STORM BOARDS IN WELDED CHANNELS & PORTABLE PLATES SECURED BY HOOK
Bridge, After Bulkhead ...	BOLTS NOT PASSING THROUGH BULKHEAD
Bridge, Forward Bulkhead ...	1 HINGED STEEL W.T. DOOR. MANIPULATED FROM BOTH SIDES
Forecastle Bulkhead ...	1 HINGED STEEL W.T. DOOR. MANIPULATED FROM BOTH SIDES. STORM BOARDS IN WELDED CHANNELS & PORTABLE PLATES SECURED BY HOOK BOLTS NOT PASSING THROUGH BULKHEAD.
Exposed Machinery Casings on Freeboard or Raised Quarter Decks ...	2 HINGED STEEL W.T. DOORS. MANIPULATED FROM BOTH SIDES.
Exposed Machinery Casings on Superstructure Decks BOILER CASING...	2 HINGED STEEL W.T. DOORS. MANIPULATED FROM BOTH SIDES.
Machinery Casings within Superstructure trunks not fitted with Class I Closing Appliances... within Poop Space	2 HINGED STEEL W.T. DOORS. MANIPULATED FROM BOTH SIDES.
PUMP ROOM ENTRANCE Deckhouses on Flush Deck Ships	1 HINGED STEEL W.T. DOOR. MANIPULATED FROM BOTH SIDES.



## BRITISH RANGER.

## PARTICULARS OF PROTECTION TO OPENINGS, ETC.

The following diagrams should be used to indicate the positions of cargo and coaling hatchways, gangway, cargo and coaling ports, ventilators, companionways, etc., which would affect the seaworthiness of the ship:—



Particulars of fiddle, funnel and ventilator coamings, engine room skylight and other openings in machinery casing tops and their means of closing:—

FIDDLE OPENINGS ON BOAT DK AFT; 4 @ 4'-0" x 2'-0" EACH, FITTED WITH GRATINGS AND HINGED STEEL COVERS.

FUNNEL & VENT COAMINGS ON BOAT DK AFT EFFICIENTLY CONSTRUCTED & SUPPORTED.

ENGINE ROOM SKYLIGHT ON BOAT DK AFT, OF STEEL STRONGLY CONSTRUCTED

PUMP ROOM SKYLIGHT, ON ROOF OF PUMP ROOM ENTRANCE HOUSE, OF STEEL STRONGLY CONSTRUCTED.

Particulars of Flush Bunker Scuttles:—

NONE.

Particulars of Companionways:—

TO CHAIN LKR IN FORECASTLE  
PLATING 3/16" STIFFENERS 4" x 3/8" WELDED  
FLATS SPACED 36" APART.  
4'-3" x 2'-3" W.T. DOOR. 18" SILLS.

DECKHOUSE ON BRIDGE DECK.

PLATING 26"-32" STIFFENERS 4" x 2 1/2" x 5/16" O.A.  
SPACED 30"-36" APART.  
4 WOOD DOORS IN AFT END  
5'-6" x 2'-3" 16" SILLS.  
DOORS OF SOLID HARDWOOD.

DECKHOUSE ON POOP DECK.

PLATING 26"-32" STIFFENERS 4" x 2 1/2" x 5/16" O.A. ON SIDES  
& ENDS: B.A. ON FRONT: SPACED 27"-33"  
2 W.T. DOORS IN AFT END 4'-3" x 2'-3" 18" SILLS.  
2 WOOD DOORS IN SIDES 5'-0" x 2'-3" 17"  
WOOD DOORS OF SOLID HARDWOOD.

Particulars of Ventilators in exposed positions on freeboard and superstructure decks:—

**FORECASTLE DECK**  
2 - 6" DIA. COWL VENTS. COAMINGS 36" x 30" TO F.P. STORE.  
2 - 8" " " " " 36" x 30" " FOCSE.  
2 - 12" " " " " 36" x 34" " FORE HOLD.  
2 - 12" " " " " 36" x 34" " FORD. TW. DKS.  
1 - 12" " " " " 36" x 34" " " PUMP RM.

**POOP DECK**  
2 - 10" DIA. COWL VENTS. COAMINGS 30" x 32" TO POOP  
2 - 6" " " " " 30" x 30" " STEER GEAR.  
2 - 6" " " " " 30" x 30" " ROPE STORE  
1 - 11" " " " " 30" x 32" " REFRIG. MACH.  
11 - 8" x 4" SWAN NECK VENTS 30" HIGH " POOP.

**UPPER DECK.**

2 - 24" DIA. COWL VENTS. COAMINGS 13'-0" x 40" TO PUMP ROOM.  
EFFICIENTLY SUPPORTED.

ALL VENTILATORS CONSTRUCTED IN ACCORDANCE WITH THE RULES & CLOSED BY WOOD PLUGS & CANVAS COVERS OR BY STEEL PLATE COVERS.

Particulars of Air Pipes in exposed positions on freeboard, raised quarter, or superstructure decks:—

**FORECASTLE DECK**  
2 - 6" DIA. AIR PIPES 36" HIGH TO FORE PEAK TANK.  
2 - 4" " " " 36" " " " DEEP "

**UPPER DECK**  
2 - 4" DIA. AIR PIPES 11'-0" HIGH TO FOR<sup>2</sup> COFFERDAM.  
2 - 4" " " " 11'-0" " " O.F. BUNKER  
2 - 4" " " " 11'-0" " " AFT COFFERDAM.  
2 - 4" " " " 11'-0" " " O.F. SETTLING TANKS.

1 - 4" DIA. AIR PIPE FROM EACH CARGO OIL TANK LED INTO  
6" MAIN & CARRIED UP FORE & MAIN MASTS.

**POOP DECK**  
2 - 4" DIA. AIR PIPES 36" HIGH TO O.F. D.B. TANK.  
2 - 4" " " " 36" " " " LUB. OIL " "  
2 - 2 1/2" " " " 18" " " " D.B. COFFERDAM.  
2 - 4" " " " 18" " " " FEED TANKS.  
2 - 6" " " " 30" " " " A.P. TANK.  
1 - 3" " " " 18" " " " RUDDER TRUNK.  
1 - 2 1/2" " " " 18" " " " STERN COMPT.  
2 - 3" " " " 18" " " " F.W. TANKS.

AIR PIPES CLOSED BY WOOD PLUGS & CANVAS COVERS  
OR BY AUTOMATIC STEEL COVERS (SEE PAGE 4)

## BRITISH RANGER

Particulars of Gangway Cargo and Coaling Ports:—

NONE.

British Ranger

Particulars of Scuppers and Sanitary Discharge Pipes:—

**SCUPPERS**

UPPER DK:— 6" x 2" CUT THROUGH SHEERSTRAKE & STRINGER BAR.

FOCSE DK:— 1-2 1/2" PIPE SCUPPER PLS DRAINS TO UPPER DK.

BRIDGE DK:— 2-2 1/2" PIPE SCUPPERS PLS DRAIN TO UPPER DK.

POOP DK:— 1-3" PIPE SCUPPER PLS DRAINS TO UPPER DK & 2-3" DIAM.

PIPE SCUPPERS LED OVERBOARD THROUGH OPEN BENDS.

FOCSE SPACE:— 1" DRAIN PLUG PLS IN FOCSE END BHD.

BRIDGE SPACE:— 1" DRAIN

PLUG PLS IN AFT BHD.

POOP SPACE:— 1" DRAIN PLUG PLS IN POOP BHD & 19 PIPE SCUPPERS LED OVERBOARD ABOVE L.W.L. & FITTED

WITH BRASS STORM VALVES (SCUPPERS IN ALLEYWAYS & REFRIG. CHAMBERS ALSO FITTED WITH SCREW PLUGS AT INNER ENDS).  
Chains attached to screw plugs.

**SANITARY DISCHARGES**

SANITARY DISCHARGES FROM POOP & BRIDGE HOUSES & FROM POOP SPACE LED OVERBOARD ABOVE L.W.L. THROUGH BRASS STORM VALVES.

ALL SCUPPER & DISCHARGE PIPING FITTED BELOW UPPER DECK IS OF STEAM QUALITY, GALVANIZED STEEL.

Particulars of Side Scuttles:—

10" DIAM. IN FORECASTLE SIDES, BRIDGE FRONT SIDES AND END. 12" DIAM. IN POOP SIDES AND FRONT.

SIDESCUTTLES OF SUBSTANTIAL CONSTRUCTION. ALL FITTED WITH HINGED DEADLIGHTS.

Vertical distance of Sill of lowest Side Scuttle above top of keel NO SIDESCUTTLES BELOW UPPER DECK.

Particulars of Guard Rails:—

UPPER DK:— 4'-0" HIGH WITH 3 RODS. STANCHIONS SPACED 4'-6"-5'-0"

POOP DK:— 3'-9" " " " " " 4'-6"-5'-6"

FOCSE DK:— 3'-6" " " " " " 4'-6"-5'-3"

F.L.A. GANGWAY:— 3'-9" " " " " " 5'-0"-5'-3"

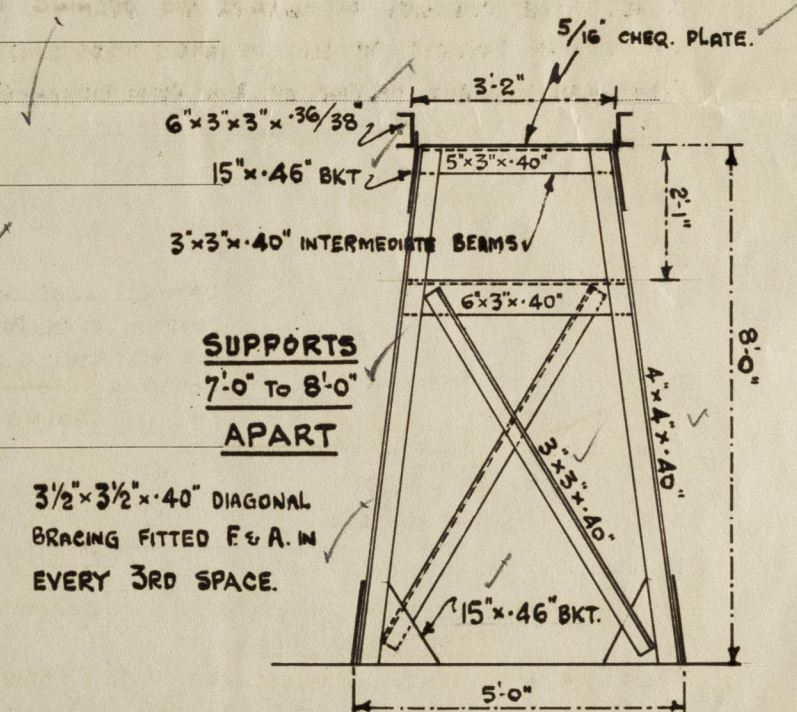
BRIDGE DK:— ENDS 3'-7 1/2" " " " " 3'-6"-5'-3"

SIDES 3'-6" " " " " " BULKHEADS OF EFFICIENT CONSTRUCTION.

Particulars of Gangways, Ladders, etc:—

GANGWAY BETWEEN POOP & BRIDGE AND BRIDGE & FORECASTLE.

SCANTLINGS AS SHOWN.



Particulars of Freeing Arrangements.

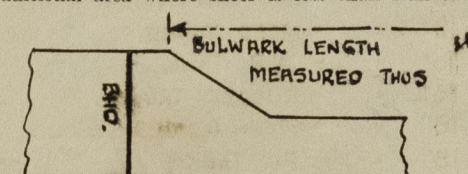
	Length of Bulwark	Height of Bulwark	Size of Freeing Ports ALSO OPEN RAILS	Number each side	Area each side	Rule area each side
After Well ...	AFT. 19-33' 4" FORD. 44-42' 4"	3'-11 1/4"	36" x 9"	1 3	8-52 ft <sup>2</sup> + open rails for half length	open rails for half length
Forward Well ...	AFT. 25-00' 4" FORD. 27-67'	3'-11 1/4"	" " "	2 1	6-39 ft <sup>2</sup> + open rails for half length	open rails for half length

State position of each freeing port ... (After Well:— 9" FORD OF POOP FRONT. 4', 23'-4" & 38'-7" AFT OF BRIDGE END.

(F. and A. position and height above deck edge) (Forward Well:— 3" & 18'-8" FORD OF BRIDGE FRONT. 18'-11" AFT OF FOCSE END.

State whether the freeing ports are fitted with shutters, bars, or rails, and give particulars of such:— NO. HEIGHT 14" ABOVE DECK.

Additional area where sheer is less than standard.





## PARTICULARS OF PROTECTION TO OPENINGS, ETC.

HATCHWAYS ON FREEBOARD AND SUPERSTRUCTURE DECKS.										FOCSLE DK.	POOP DK.
UPPER DECK											
Description of Hatchway	HATCH TO	HATCHES TO	HATCH TO	HATCH TO FOR	HATCH TO FOR	HATCHES TO	MANHOLES TO	MANHOLE	HATCH TO	HATCH TO	
	FORE HOLD	CARGO TANKS	F.P. STORE	TWEEN DK.	PUMP ROOM	O.F. BUNKERS	SETTLING TANKS	TO FOCSE	STERN COMP.	POOP SPACE	
Dimensions of Hatchway	6'9" x 10'0"	27'0" x 4'0"	3'0" x 3'0"	2'6" x 2'0"	3'0" x 3'0"	3'0" x 3'0"	10'0" x 18"	23" x 18"	2'6" x 2'6"	2'9" x 2'9"	
COAMINGS	Height above Deck ... 30"	12"	9" x 3" x 40"	9" x 3" x 40"	30"	30"	12" x 3 1/2" x 50"	9" x 3" x 40"	30"	21"	
	Thickness ... 44"	50"	B.A.	B.A.	40"	40"	O.A. WELDED TOE ON	B.A.	40"	40"	
	Stiffeners ... 2" x 2" x 45" O.A.										
	Brackets, Stays ... WELDED TOE ON ALL ROUND TOP										
HATCH BEAMS	Number ...										
	Spacing ...										
	Scantling and Sketch ...										
	Bearing Surface ...				NONE						
FORE AND AFTERS	Number ...										
	Spacing ... 5'0"										
	Unsupported Lengths ... 6'9"										
	Scantling* and Sketch ...										
	Bearing Surface ...				NONE						
HATCH COVERS	Material ... STEEL, HINGED	STEEL, HINGED	STEEL, HINGED	STEEL HINGED	STEEL HINGED	STEEL HINGED	STEEL PLATE	STEEL HINGED	STEEL HINGED	WOOD	
	Thickness ... W.T. COVER	O.T. COVERS	W.T. COVER	W.T. COVER	W.T. COVER	O.T. COVERS	COVERS	W.T. COVER	W.T. COVER	2 1/2"	
	How fitted ... 2 PARTS	64"	50"	50"	50"	50"	46"	46"	50"	2 1/2"	
	Bearing Surface ... 60" THICK.	THICK.	THICK.	THICK.	THICK.	THICK.	46" THICK.	THICK.	THICK.	2 1/2"	
Spacing of Cleats	13 1/2" - 15 3/4"	14" - 16"	17" - 18"	15" - 18"	18"	17" - 20"	BOLTS 3/2"	TOGGLES 17"	TOGGLES 2 PER SIDE	2 PER SIDE	
Number of Tarpaulins	APART.	APART.	APART.	APART.	APART.	APART.	PITCH.	APART.	APART.	2	

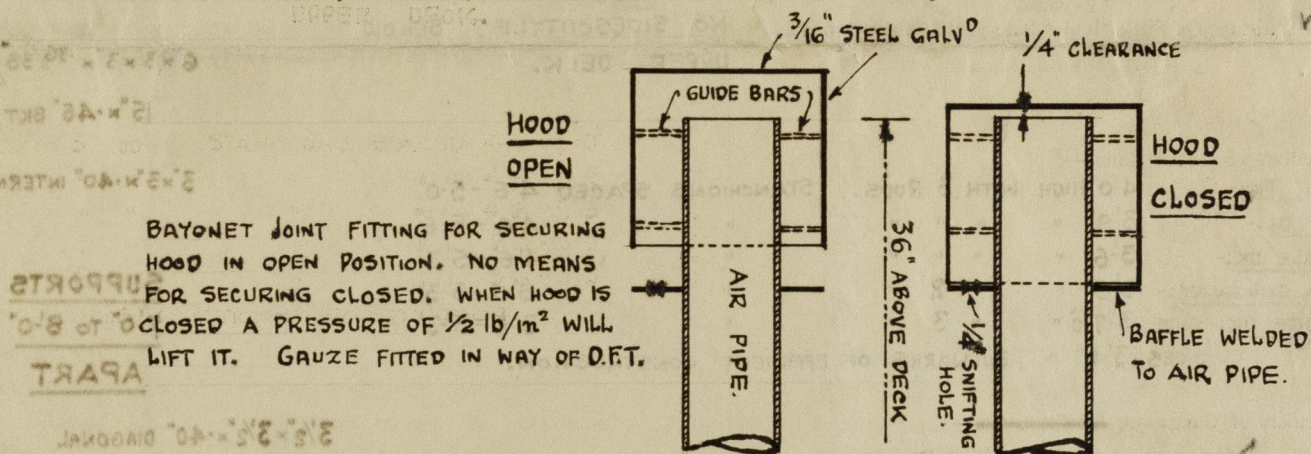
\*Are wood fore and afters steel shod at all bearing surfaces? ☒

Are battens and wedges efficient and in good condition? YES. ☒

Are tarpaulins in good condition and in accordance with rule requirements? YES. ☒

Are lashings provided in accordance with rule requirements? ☒

Particulars of any special features:— 12 1/2" DIA. OPENING IN UPPER DECK TO EACH CARGO OIL TANK FOR "BUTTERWORTH" TANK CLEANING SYSTEM CLOSED W.T. BY 3/4" STEEL PLATE COVER SECURED BY 3/4" BOLTS @ 4 3/4" PITCH.



Endorsement at first survey and at surveys for renewal of Certificate:—

The fittings and appliances are in accordance with the particulars shown on this form (or as now modified) and are in good condition.