

Lloyd's Register of Shipping.

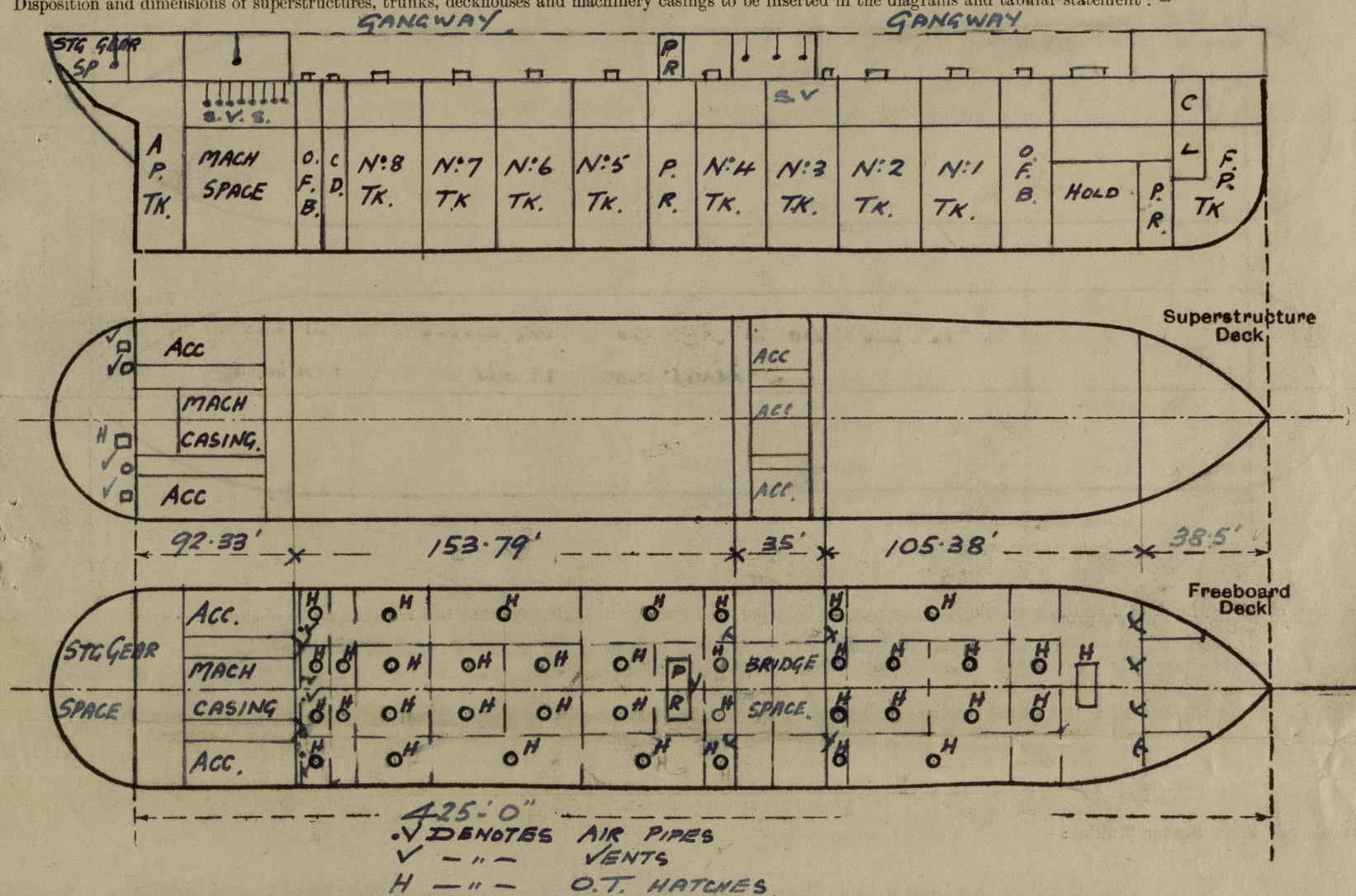
SURVEYS FOR FREEBOARD.

(CONDITIONS OF ASSIGNMENT.)

Rpt. No. F. 214

Ship's Name **S.S. "GULFDOWN" now "C.B. WATSON"**Port of Survey **Port Arthur, Texas**Official Number **235070**Surveyor's Signature *James Lindsay & W. Chapman*Nationality and Port of Registry **American, Baltimore**Date of Survey **12th September, 1947 & 8th October, 1947**

Disposition and dimensions of superstructures, trunks, deckhouses and machinery casings to be inserted in the diagrams and tabular statement: -



Particulars of Superstructures, Trunks, Casings, Deckhouses.

	Coaming	Plating	Stiffeners	Spacing	End Attachments of Stiffeners	Size of Openings	Height of Sills	Height of Casings
Poop Bulkhead	-	.50"	10"x4½"x.50" Fl. Channel	36"	E.W. top & bottom	57" x 26"	18"	8.0'
Raised Quarter Deck Bulkhead ...								
Bridge, After Bulkhead	18"x.40"	.35"	5" x 3"x.40" 10"x3½"x.45" Fl. Channel	33"	Bracketed at top sniped at bottom	56" x 30"	24"	8.0'
Bridge, Forward Bulkhead	18"x.50"	.50"	24.46 lbs. 33"	33"	Bracketed at top E.W. at bottom	66" x 26"	24"	8.0'
Forecastle Bulkhead	-	.35	4"x3"x.38"	30"	None	60"/66"x26"	15"	8.0'
Trunk, Aft								
Trunk, Forward								
Exposed Machinery Casings on Freeboard or Raised Quarter Decks ...	None							
Exposed Machinery Casings on Superstructure Decks	None							
Machinery Casings within Superstructures not fitted with Class I Closing Appliances								
Deckhouses on Flush Deck Ships ...								

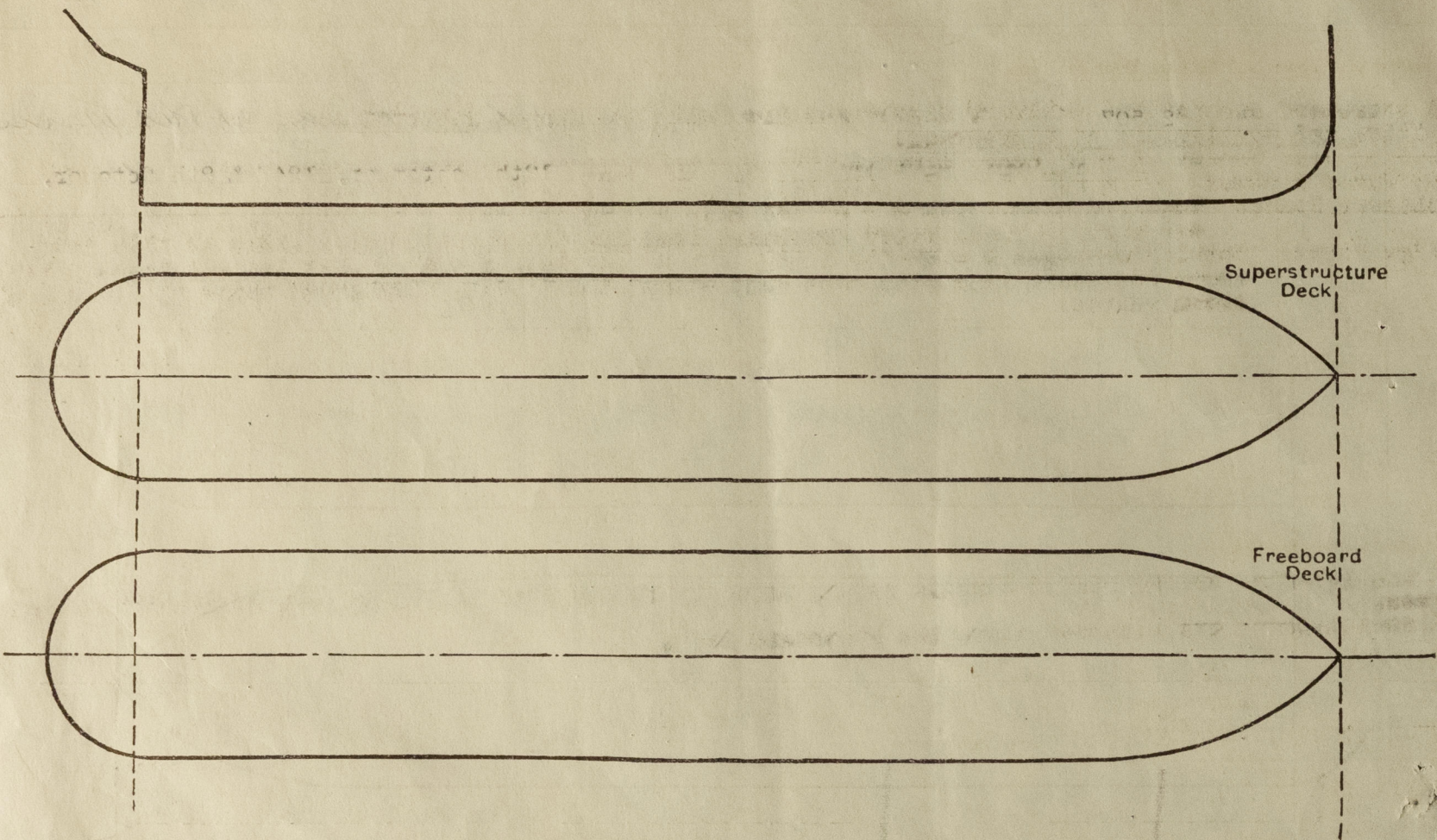
Particulars of Closing Appliances (state if capable of being manipulated from both sides).

Poop Bulkhead	Steel hinged W.T. doors (1P. 1S.)	Capable of being manipulated from both sides
Raised Quarter Deck Bulkhead ...	" " " " (1P. 1S.)	" " " " " " " "
Bridge, After Bulkhead	" " " " (1C.L. 1S.)	" " " " " " " "
Bridge, Forward Bulkhead	" " " " (2P. 2S.)	" " " " " " " "
Forecastle Bulkhead	" " " " (2P. 2S.)	" " " " " " " "
Exposed Machinery Casings on Freeboard or Raised Quarter Decks ...		
Exposed Machinery Casings on Superstructure Decks		
Machinery Casings within Superstructures not fitted with Class I Closing Appliances		
Deckhouses on Flush Deck Ships ...		

Note: Steel hinged doors capable of being manipulated from both sides, opening 58" x 24" with 15" sill fitted in machinery casing in Poop Space.

PARTICULARS OF PROTECTION TO OPENINGS, ETC.

The following diagrams should be used to indicate the positions of cargo and coaling hatchways, gangway, cargo and coaling ports, ventilators, companionways, etc., which would affect the seaworthiness of the ship :—



Particulars of fiddley, funnel and ventilator coamings, engine room skylight and other openings in machinery casing tops and their means of closing :—

Fiddley, funnel and ventilator coamings of steel strongly constructed. ✓
 Engine room skylight and 5 skylights to Peep Accommodation, all of steel strongly constructed ✓
 with hinged steel flaps having securing device. ✓
 Steel hinged covers fitted over fiddley openings with securing pins in the closed position. ✓

Particulars of Flush Bunker Scuttles :—

None

Particulars of Companionways:— Access to Main Pumproom of .32 plating with 4" x 3" x .38 stiffeners spaced 30" apart, sniped top and bottom. Entrance through steel hinged W. T. door capable of being manipulated from both sides, opening 56" x 28" with 18" sill. ✓

Particulars of Ventilators in exposed positions on freeboard and superstructure decks :—

Forecastle Deck - 2 - next casing 26" x 36" to Forecastle and Fore Peak Stores.

1 - 12" dia. cowl vent coaming 36" x .36" to Forecastle and Fore
2 - 10" dia. cowl vent coamings 36" x .35" to Forecastle Spaces.

22 - 10" dia. cowl vent coamings 36" x .35" to Dry Cargo Hold.

Poop Deck
12 - 12" dia. cowl vents coaming 10'-3" x .25 suitably supported, to ice machine space (p.s.) & Poop Accom. (S.S.).

- 6" dia. S.N. vent 28" to opening, fitted with ball check valve to poop stores (s.s.).

2 - 15" x 15" S.N. vent 33" to opening .38" coaming to Poop Accom. (p.s.). ✓
 2 - 15" x 15" S.N. vent 33" to opening .38" coaming to Poop Accom. (1p. & 15.). ✓

- 14" dia. cowl vents coaming 12'-3" x .25" suitably supported, to Poop Accom. (11' x 13').

Cowl and swan neck vents fitted with wood plugs and canvas covers except where otherwise indicated.

Particulars of Air Pipes in exposed positions on freeboard, raised quarter, or superstructure decks :—

Upper Deck
2 - 6" dia. (1P. 1S.) and 2 - 4" dia. (1P. & 1S.) air pipes, 7'-9" to opening and suitably supported to aft O.F. Bunker.

Note - All air pipes supplied with wood plugs and canvas covers, air pipes from O. F. bunkers fitted with wire gauge.
Hatch lids of all summer, cargo, cofferdam and bunker tanks fitted with 3" dia. air pipes and VAC-REL patent non-return valves. ✓

Particulars of Gangway Cargo and Coaling Ports:—

None

Particulars of Scuppers and Sanitary Discharge Pipes :—

All overboard scupper and sanitary discharges are lead from spaces situated above the Freeboard Deck.

Position and particulars of discharges:

Steering Gear Space: 2 - 3" comb. dis. (1P 1S) led out thro' shell above Freebd. deck - open end

Machinery Space: Combined discharges 6 - 2" (4P 2S), 3 - 2½ (1P 2S), 2 - 4 (P.S.), 1 - 5" (S.S.) led out through shell below Freeboard Deck and fitted with storm valve at ship side. ✓

Bridge Space: Comb. discharges 2 - 2" (1P & 1S), 2 - 3" (1P 1S), 1 - 4" (P.S.) led out through shell above Freeboard Deck with open ends except the 2" dia. discharges which are fitted with storm valves.

current confirmation of the felling of means
of preventing the admission of water from Polveston
Sewer etc

Particulars of Side Scuttles :—

12" and 14" dia. bronze hinged scuttle ports, strongly constructed fitted in Poop spaces and Bridge Houses.

All scuttleports are situated above the Freeboard Deck. *Searchlights provided*

Vertical distance of Sill of lowest Side Scuttle above top of keel

Particulars of Guard Rails :—

In wells: Stanchions 3'-4" high spaced 6'-0" apart with 2 guard rails.
Forecastle Dk.: " 3'-2" " 6'-0" " 2 " "

orange cross on wall
top of sheetrock = 1'4 1/2"

6 x 4 x $\frac{1}{2}$ O.A. rail and .38 flanged plate supports spaced 21'-0" also bulwark 3'-2" x .38" with

Bridge Deck: Stanchions 3'-6" high spaced 4'-3" apart with 2 guard rails, also bulwark 3'-6" x .25 with teak rail.

Pop Deck: Stanchions 3'-6" high spaced 4'-6" apart with 2 guard rails. *(Superstructure Deck :- distance between lower rail & top of sheetrock = 1'-8")*

Particulars of Gangways, Lifelines, etc. :—

Fore and aft gangway fitted - see sketch over. ✓


Particulars of Freeing Arrangements.						
	Length of Bulwark	Height of Bulwark	Size of Freeing Ports	Number each side	Area each side	Rule area each side.
After Well						
Forward Well						

Open rails in wells

State position of each freeing port { After Well :—
(F. and A. position and height above deck edge) { Forward Well :—

State whether the freeing ports are fitted with shutters, bars, or rails, and give particulars of such :—

Additional area where sheer is less than standard.



© 2020
Lloyd's Register Foundation

PARTICULARS OF PROTECTION TO OPENINGS, ETC.

HATCHWAYS ON FREEBOARD AND SUPERSTRUCTURE DECKS.									
		Freeboard Deck				Superstructure Deck			
Description of Hatchway		Dry Cargo Hold	Cargo & Summer tks.	No. 2 Stk. & O.F. Bks.	Coffer-dam	To steering gear space			
Dimensions of Hatchway		5'x8'-9"	4'-6" dia.	3'-6" dia.	24" dia.	3'x2'-10"			
COAMINGS	Height above Deck	36"	30"	30"	20"	24"			
	Thickness	.40	.40	.40	.35"	.38			
	Sides								
	Ends								
Stiffeners	Horiz.	5"x2" Chl.	7x3x.40	7x3x.40"	-	-			
	Brackets, Stays	11.5 lbs. B.A.		B.A.	-	-			
HATCH BEAMS	Number								
	Spacing								
	Scantling and Sketch								
	Bearing Surface								
FORE AND AFTERS	Number								
	Spacing								
	Unsupported Lengths								
	Scantling and Sketch								
Bearing Surface									
HATCH COVERS	Material	.35 steel	.40" steel	.40 steel	Heavy cast brass	.38 hinged steel W.T.			
	Thickness	hinged	O.T. hinged	O.T. hinged	hinged	lid with 6 screw toggles			
	How fitted	lid suitably stiffened with 10 screw toggles	lid suitably stiffened with 9 screw toggles	lid with 7 screw toggles	O.T. lid with 4 screw toggles				
	Bearing Surface								
Spacing of Cleats									
Number of Tarpaulins									

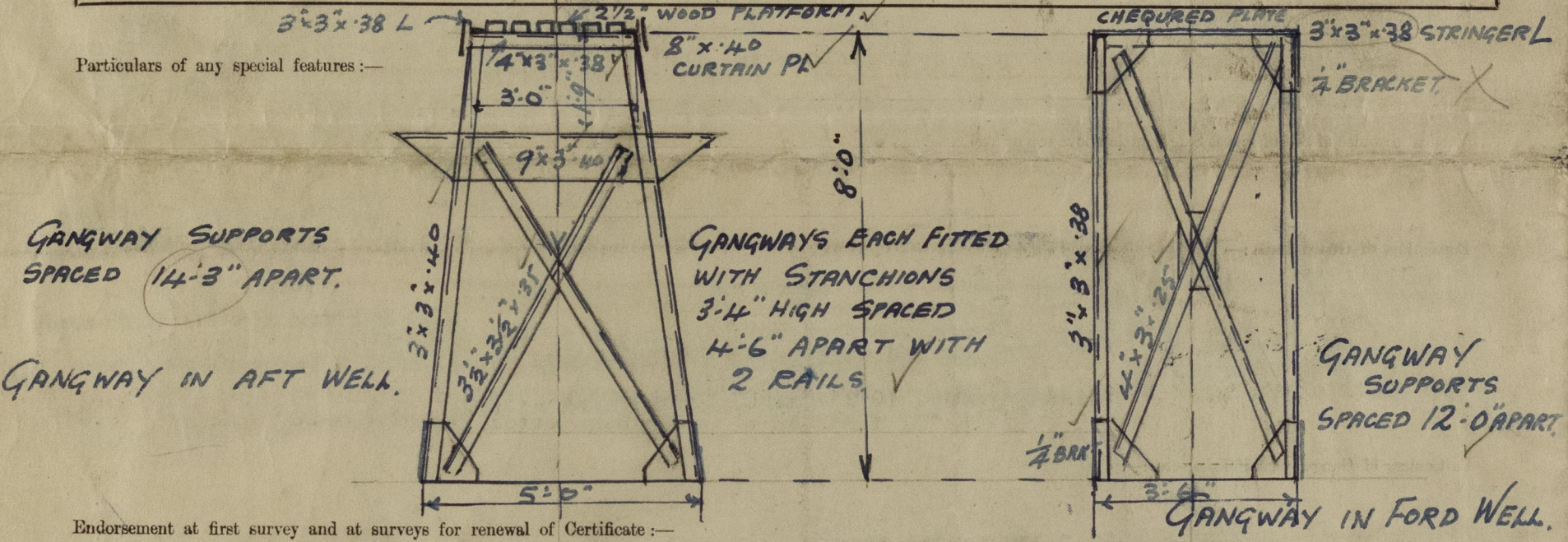
*Are wood fore and afters steel shod at all bearing surfaces? ☒

Are battens and wedges efficient and in good condition? ☒

Are tarpaulins in good condition and in accordance with rule requirements? ☒

Are lashings provided in accordance with rule requirements? ☒

10" dia. ullage ports with efficient securing device fitted in cargo, summer and bunker tank lids. ☒



The fittings and appliances are in accordance with the particulars shown on this form (or as now modified) and are in good condition.

