

29 OCT 1956

Rpt. C.11.

LLOYD'S REGISTER OF SHIPPING

Index No. _____
(For London Office only.)

UNITED WITH THE BRITISH CORPORATION REGISTER

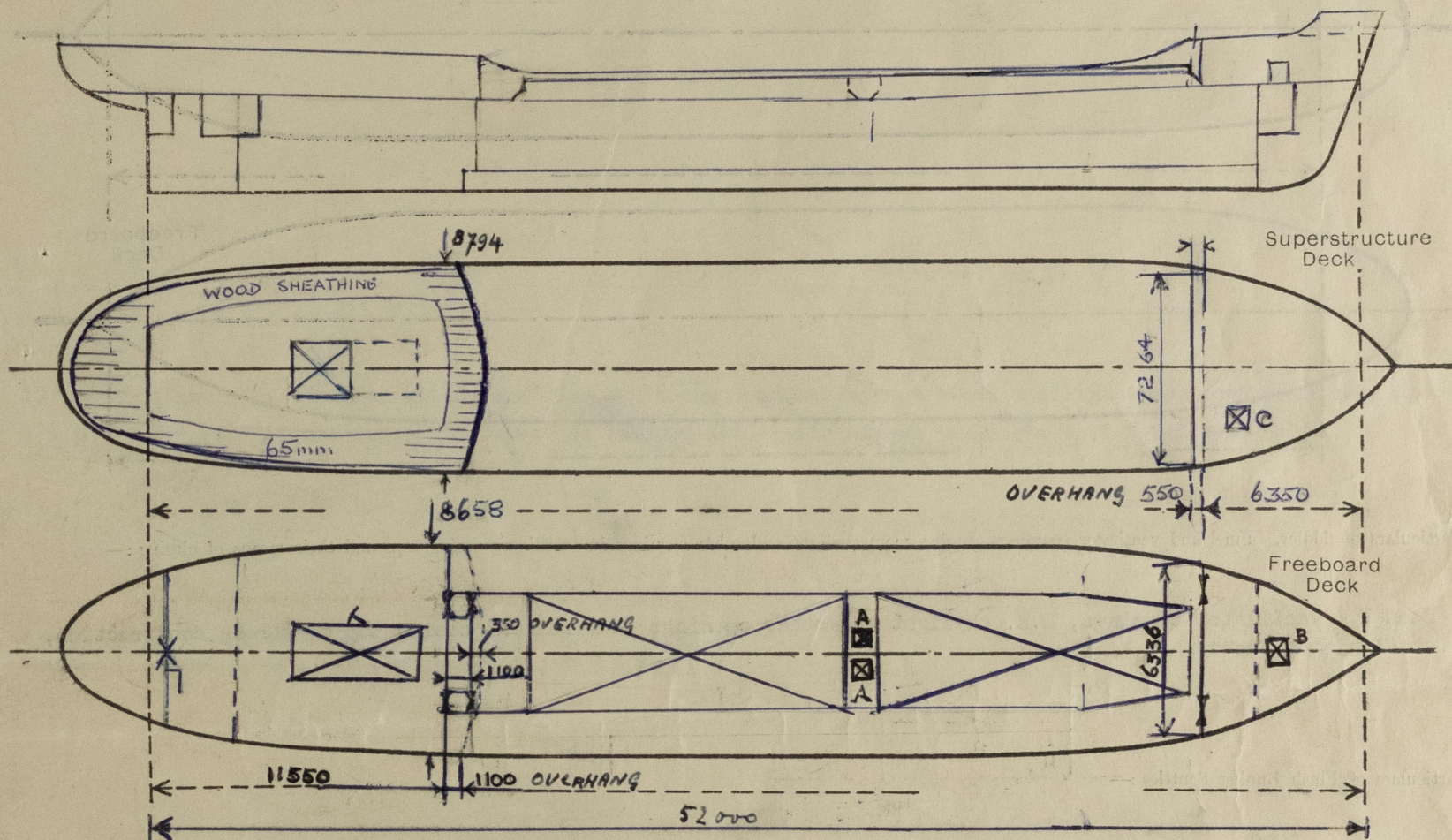
SURVEYS FOR FREEBOARD.

FB 525

(CONDITIONS OF ASSIGNMENT.)

Ship's Name **"CAPELLA"** Port of Survey **Zaandam**
Official Number **-** Surveyor's Signature *[Signature]*
Nationality and Port of Registry **Netherlands - Groningen** Date of Survey **October 1956**

Disposition and dimensions of superstructures, trunks, deckhouses, machinery casings and wood sheathing to be inserted in the diagrams and tabular statement :-



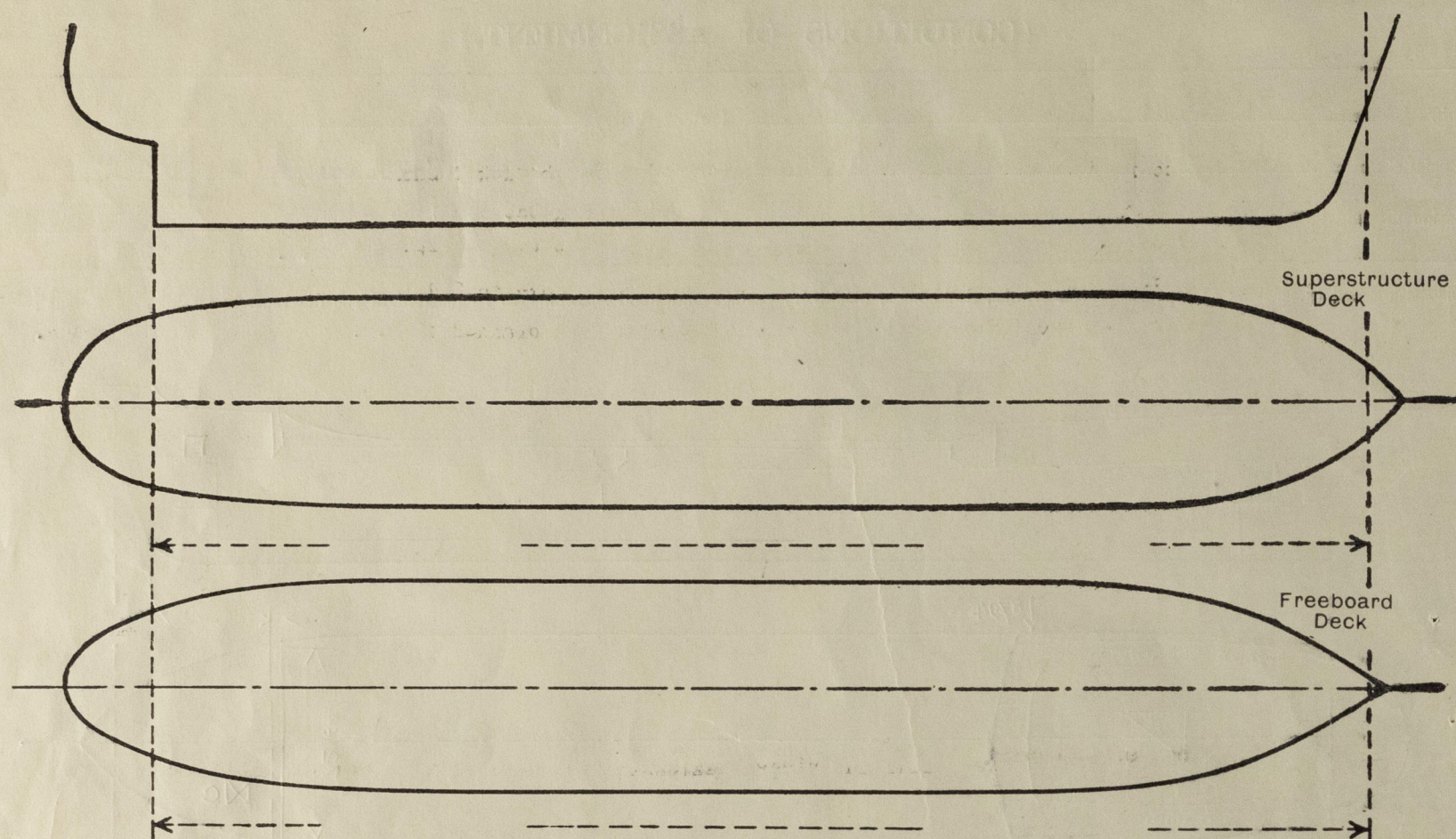
| Particulars of Superstructures, Trunks, Casings, Deckhouses. | | | | | | | | |
|--|---------|---------|-----------------|-----------|-------------------------------|------------------|-----------------|----------------------|
| | Coaming | Plating | Stiffeners | Spacing | End Attachments of Stiffeners | Size of Openings | Height of Sills | Height, Beam to Beam |
| Poop Bulkhead | 8 ✓ | 7½ ✓ | √130 x 75 x 9 ✓ | 613/550 ✓ | brackets top & bottom ✓ | 2 x 1270 x 920 ✓ | 610 ✓ | 2052 ✓ |
| Raised Quarter Deck Bulkhead ... | v | | | | | | | |
| Bridge, After Bulkhead | v | | | | | | | |
| Bridge, Forward Bulkhead | v | | | | | | | |
| Forecastle Bulkhead | - | 6 ✓ | √65 x 50 x 6 ✓ | 600/410 ✓ | welded top & bottom ✓ | 2 x 1230x920 ✓ | 610 ✓ | 1900 ✓ |
| Trunk, Aft | v | | | | | | | |
| Trunk, Forward | v | | | | | | | |
| Exposed Machinery Casings on Freeboard or Raised Quarter Decks ... | v | | | | | | | |
| Exposed Machinery Casings on Superstructure Decks | v | | | | | | | |
| Machinery Casings within Superstructures not fitted with Class I Closing Appliances | 7 | 5 ✓ | √60x40 x 5 ✓ | 550 ✓ | brackets top ✓ | 2x1600x650 ✓ | 250 ✓ | 2052 ✓ |
| Deckhouses and Pump Room Entrances | v | | | | | | | |

Particulars of Closing Appliances (state if capable of being manipulated from both sides).

| | |
|--|---|
| Poop Bulkhead | double steel plates on hook bolts frame 21223 |
| Raised Quarter Deck Bulkhead ... | - |
| Bridge, After Bulkhead | - |
| Bridge, Forward Bulkhead | - |
| Forecastle Bulkhead | wood boards in welded channels ✓ |
| Exposed Machinery Casings on Freeboard or Raised Quarter Decks ... | - |
| Exposed Machinery Casings on Superstructure Decks | - |
| Machinery Casings within Superstructures not fitted with Class I Closing Appliances | steel hinged doors operated from both sides ✓ |
| Deckhouses and Pump Room Entrances | - |

PARTICULARS OF PROTECTION TO OPENINGS, ETC.

The following diagrams should be used to indicate the positions of cargo and coaling hatchways, gangway, cargo and coaling ports, side scuttles, scuppers, ventilators, companionways, etc., which would affect the seaworthiness of the ship :-



Particulars of fiddle, funnel and ventilator coamings, engine room skylight and other openings in machinery casing tops and their means of closing :-

Funnel & ventilator coamings, E.R. skylight and other openings in machinery casing top of strong construction, steel hinged flaps on skylights.

Particulars of Flush Bunker Scuttles :-

none

Particulars of Companionways :-

(including those incorporated in deckhouses and masthouses)

none

Particulars of Ventilators in exposed positions on freeboard and superstructure decks :-

| | | | | | | | | |
|---|-----------|------|--------|-----------------------------|------|-----------|------|--|
| 2 | vents. | dia. | 353 mm | height above freeboard deck | 3020 | thickness | 9 mm | supported to poopdeck, leading to hold |
| 2 | " | " | 353 mm | " | " | fo'cle | 915 | " |
| 1 | gooseneck | dia. | 3" | " | " | " | 915 | " |
| 1 | " | " | 2" | " | " | poop | 480 | " |
| 3 | " | " | 2" | " | " | " | 480 | " |

Wood plugs and canvas cover for all ventilator coamings fitted

and fridge spaces in poop

Particulars of Air Pipes in exposed positions on freeboard, raised quarter, or superstructure decks :-

All air pipes on freeboard deck 915 mm in height

" " " superstructure deck 460 mm "

Oil tank air pipes are provided with wire gauze diaphragm + canvas cover

Other air pipes fitted with wood plugs with chain attachment.

Particulars of Gangway Cargo and Coaling Ports :-

none

Particulars of Scuppers and Sanitary Discharge Pipes :-

3 freeboard deck scuppers p & s welded pipes 2 1/2" through deck & shell

No sanitary discharges from spaces below the freeboard deck.

Sanitary discharges from poop spaces are lead overboard through shell in E.R., fitted with automatic non-return valves, capable of being screwed down in E.R.; extra slide valve fitted in W.C.

Steering flat and tonnage wells p & s in poop front are drained to E.R. with self closing cocks.

Particulars of Side Scuttles & Deadlights :-

12" steel frame side scuttles with brass rims and hinged malleable cast steel deadlights are fitted in poop spaces

1 x p & s 12" steel frame fixed side scuttles in forecastle with hinged malleable cast steel deadlights.

Vertical distance of Sill of lowest Side Scuttle above top of keel 5450

Distance from amidships to centre of lowest Side Scuttle 14725

Particulars of Guard Rails & Bulwarks :-

Freeboard deck bulwark plate 7mm, height 1000, railing bar 165 x 63 x 13 x 19, stanchions 200 x 9, spaced 1100

Poop " " " 6 " " 1000, " " 125 x 58 x 11 x 22, " 175 x 8, " 1650

Railway on forecastle deck height 1000, top rail 1 1/4" gas pipe, 2 rails between 1 1/4" gas pipe, stanchions 65 x 10 spaced 1000

Particulars of Gangways, Lifelines, etc. :-

2 1/2" steel life line fitted from poop to forecastle on hatchways with rove through stanchions and stretching screw.

Particulars of Freeing Arrangements.

| | Length of Bulwark | Height of Bulwark | Size of Freeing Ports | Number each side | Area each side | Rule area each side |
|------------------|-------------------|-------------------|-----------------------|------------------|---------------------|---------------------|
| After Well ... | 32.450 m. | 1000 | 2200 x 150 | 9 | 2.97 m ² | 2.96 m ² |
| Forward Well ... | | | | | | |

State position of each freeing port ... { After Well :-
(F. and A. position and height above deck edge) Forward Well :-

State whether the freeing ports are fitted with shutters, bars, or rails, and give particulars of such :-

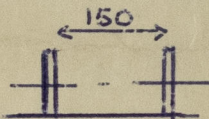
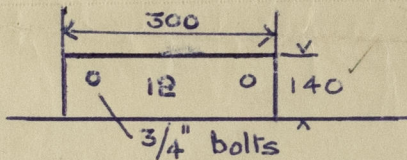
Additional area where sheer is less than standard.

PARTICULARS OF PROTECTION TO OPENINGS, ETC.

| HATCHWAYS ON FREEBOARD AND SUPERSTRUCTURE DECKS. | | | | | | | | | | |
|---|-----------------------|---------|-----------|------------|------------|----------|------------|--|--|--|
| Description of Hatchway | ... | ... | I | II | A | B | C | | | |
| Dimensions of Hatchway | ... | ... | 3350x5000 | 15020x5000 | 700x700 | 790x490 | 730x730 | | | |
| COAMINGS | Height above Deck | ... | 760 | 760 | 610 | 270 | 610 | | | |
| | Thickness | { Sides | 105 | 105 | 8 | 8 | 8 | | | |
| | Stiffeners | { Ends | 175x10.5 | 175x2 | | | | | | |
| | Brackets, Stays | { Sides | | | | | | | | |
| HATCH BEAMS | Number | ... | 8 | 9 | | | | | | |
| | Spacing | ... | 1480 | 1500 | | | | | | |
| | Scantling and Sketch | ... | 200x15 | | | | | | | |
| | Bearing Surface | ... | 75 | | | | | | | |
| FORE AND AFTERS | Number | ... | | | | | | | | |
| | Spacing | ... | | | | | | | | |
| | Unsupported Lengths | ... | | | | | | | | |
| | Scantling* and Sketch | ... | | | | | | | | |
| HATCH COVERS | Material | ... | wood | | steel | wood | steel | | | |
| | Thickness | ... | 62mm | | 6mm | 50mm | 6mm | | | |
| | How fitted | ... | f & a | | hinged | 65mm | hinged | | | |
| | Bearing Surface | ... | 95 & 75 | | cover with | | cover with | | | |
| Spacing of Cleats | ... | ... | 600 mm | 600 mm | 4 toggles | 8 cleats | 4 toggles | | | |
| Number of Tarpaulins | ... | ... | 2 | 2 | | 2 | | | | |
| <p>*Are wood fore and afters steel shod at all bearing surfaces? -</p> <p>Are battens and wedges efficient and in good condition? yes</p> <p>Are tarpaulins in good condition and in accordance with rule requirements? yes</p> <p>Are lashings provided in accordance with rule requirements? yes (LOCKING BARS.)</p> <p>Are wood covers fitted with galvanised end bands? yes</p> | | | | | | | | | | |

Particulars of any special features:— (Timber Deck Cargo Fittings, Stanchion Supports, etc.)

stanchion supports on fr. deck



spaced 2200

2 x 25mm hole in gunwale bar in way of each stanchion, fitted with steel clips 7/8" roundbar

19mm short link chains + 1 1/2 stretching screws and slip hooks provided, fitted on

20mm eye plates on deck, spaced 2200mm

25mm holes in bulwark stanchions

Particulars of any special features:— (Timber Deck Cargo Fittings, Stanchion Supports, etc.)

Efficient auxiliary steering arrangements