

N^o 504

PLAN OF STERN FRAME AND RUDDER

SCALE 1/2" = 1 FOOT

STERN FRAME. UPPER PORTION CAST STEEL.
LOWER PORTION FORGED IRON OR STEEL.

RUDDER. FORGED IRON OR FORGED STEEL.
ALL TO LLOYD'S APPROVAL.

RULE STERNPOST 10 3/4 x 8 3/4"
RULE RUDDER POST 9 1/4 x 8 3/4"

OWNERS PRINCIPAL ADDITIONS.

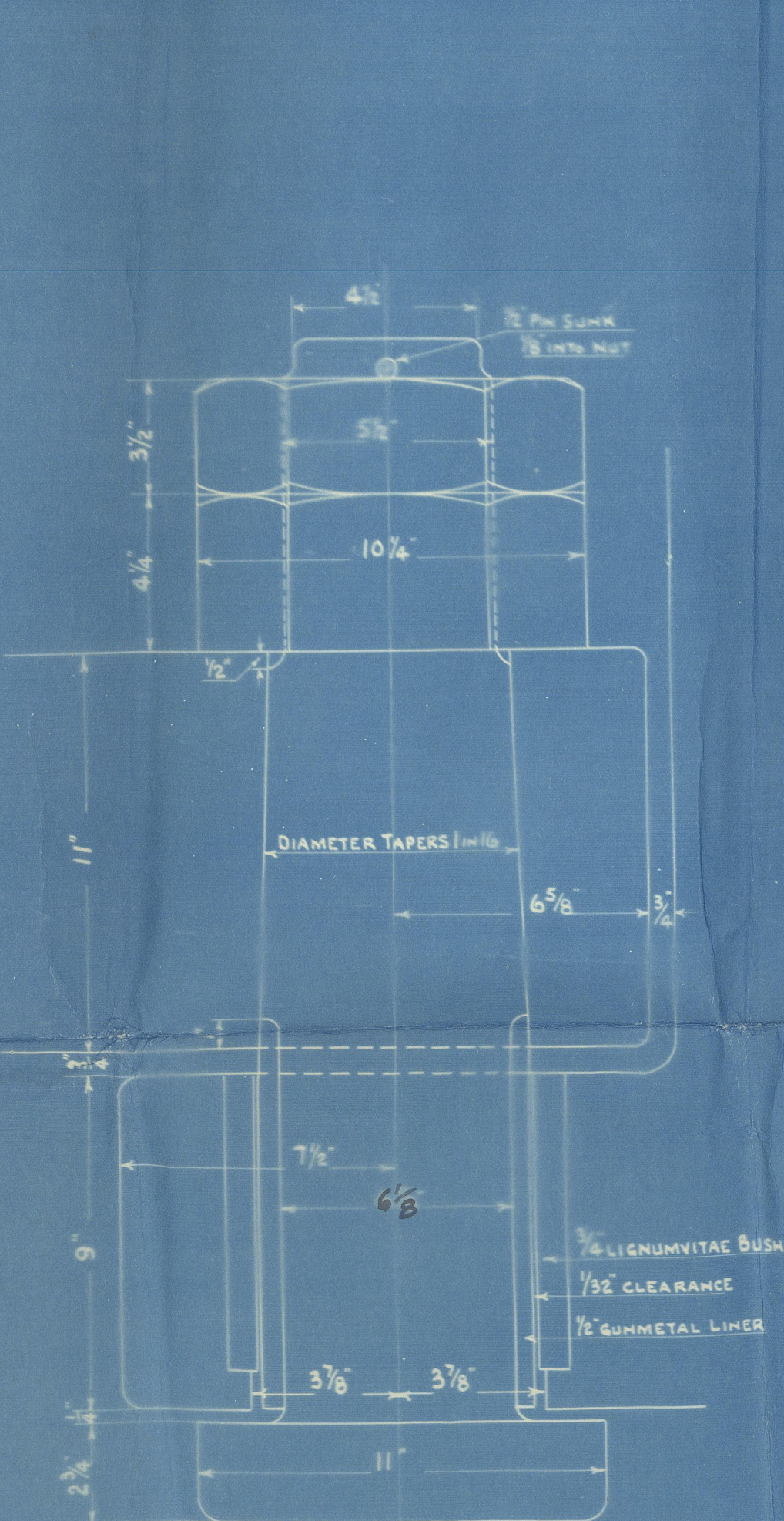
STERN FRAME ONE GRADE ABOVE RULE.

STERN POST INCREASED IN WIDTH TO ADMIT OF ROUNDED BACK.

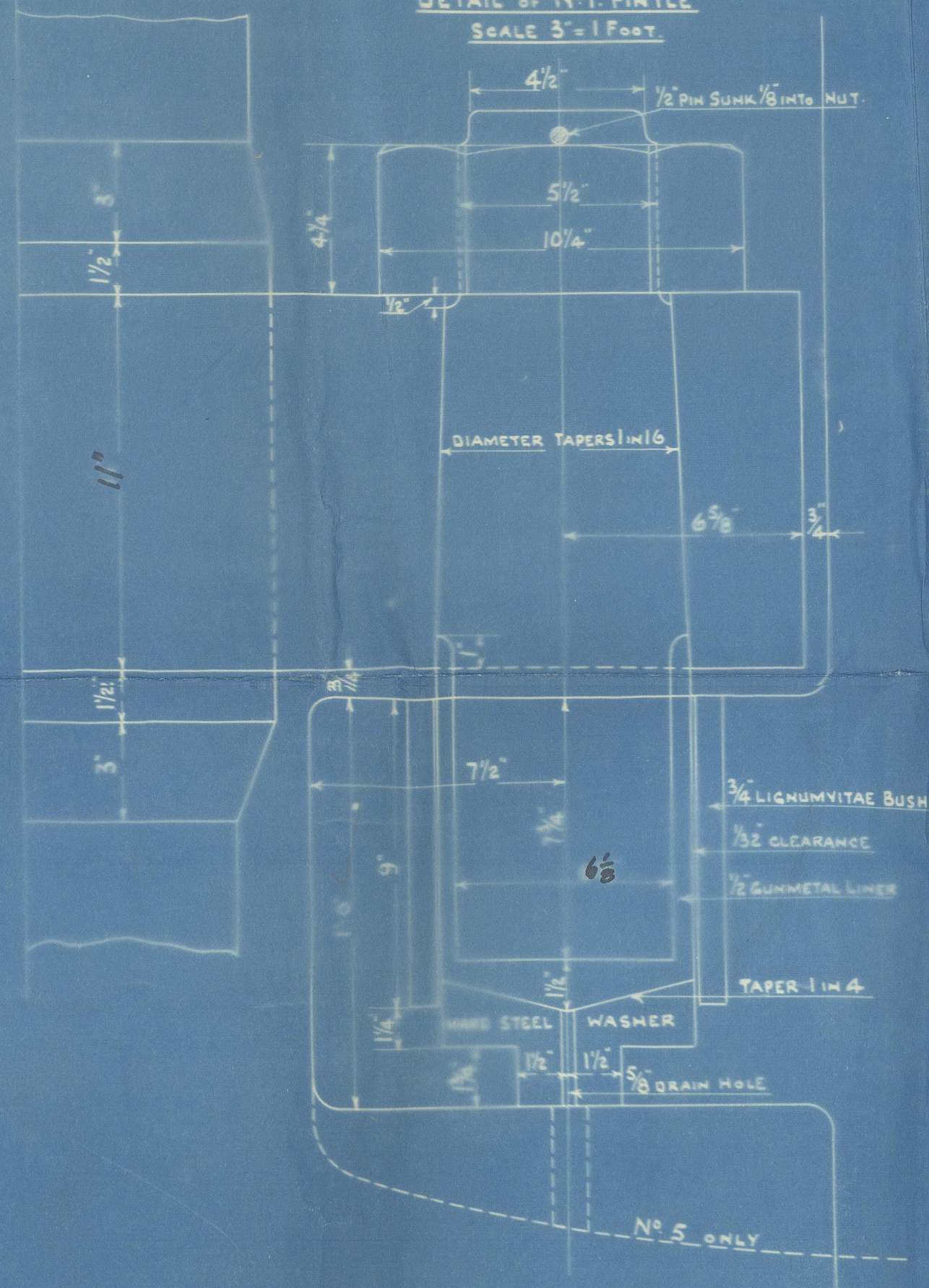
RUDDER UPPER STOCK INCREASED 5/8"

PINTLES INCREASED 1/4 INCH.

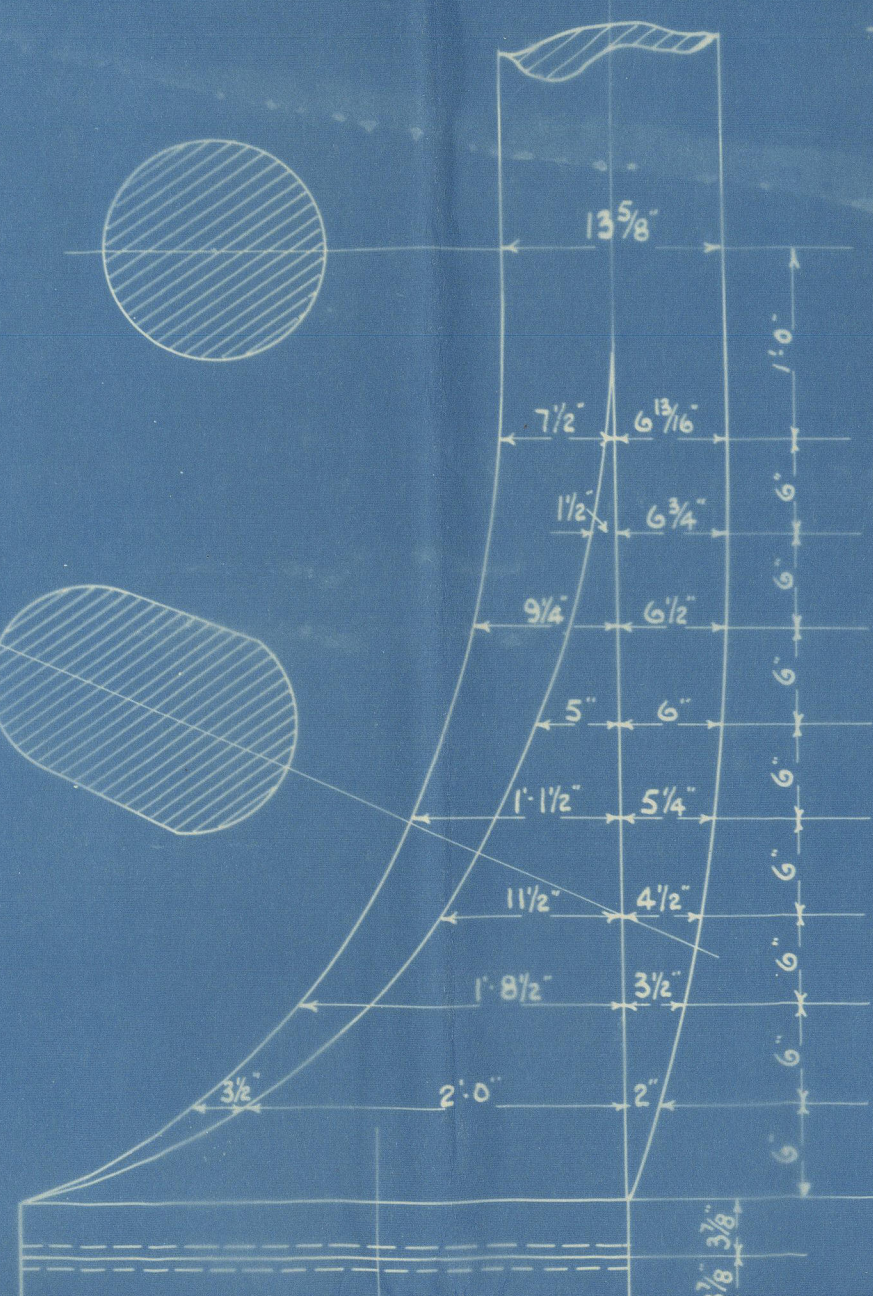
Speed 13 1/2 knots



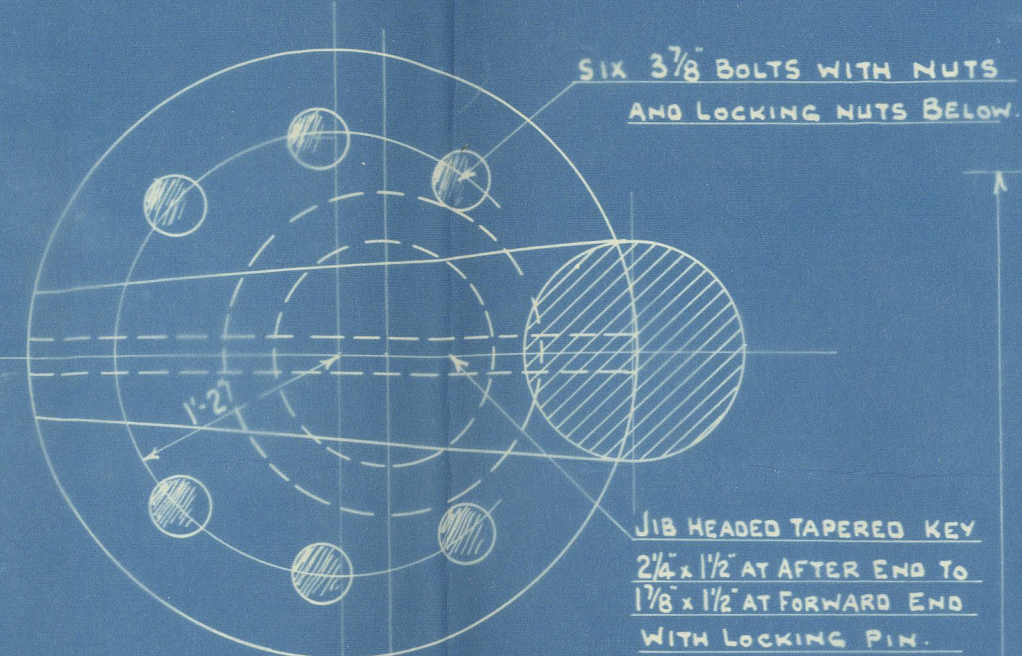
DETAIL OF NO. 1 PINTLE
SCALE 3" = 1 FOOT.



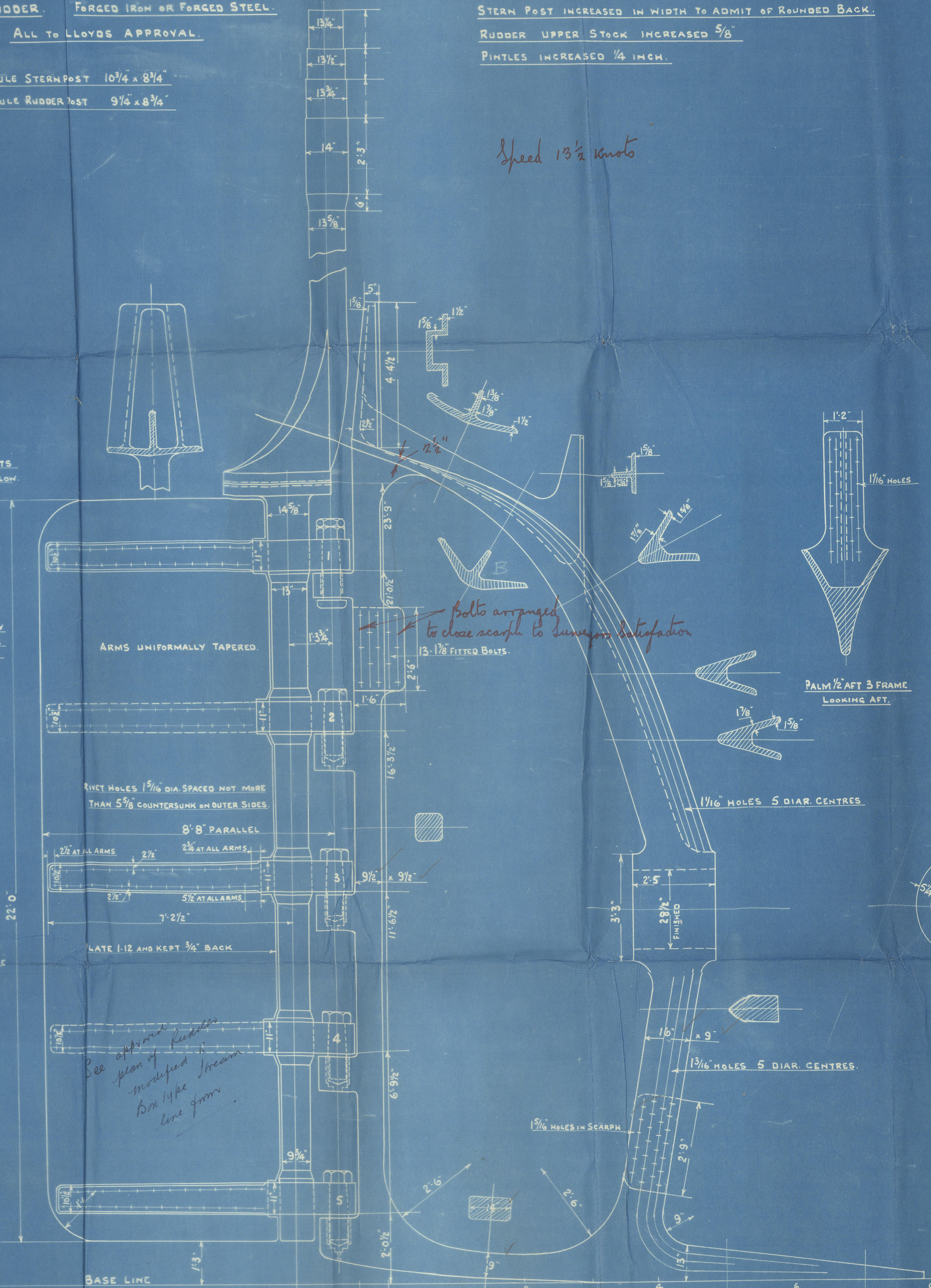
DETAIL OF PINTLES NOS 2 TO 5
SCALE 3" = 1 FOOT.



DETAIL OF RUDDER COUPLING
SCALE 1" = 1 FOOT.



DETAIL OF RIVET HOLES IN ARMS
FULL SIZE



TYPICAL PLAN OF ARM

WORME, CLARK (1920) LTD.
11 JAN 1921
LLOYD'S REGISTER

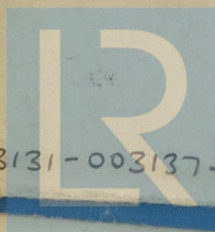
LLOYD'S REGISTER
FOUNDATION

W. C. 504

Amended
Stevn Frame.

+ Reader

"City of Sydney"



© 2020

003131-003137-0050

Lloyd's Register
Foundation