

# Lloyd's Register of Shipping.

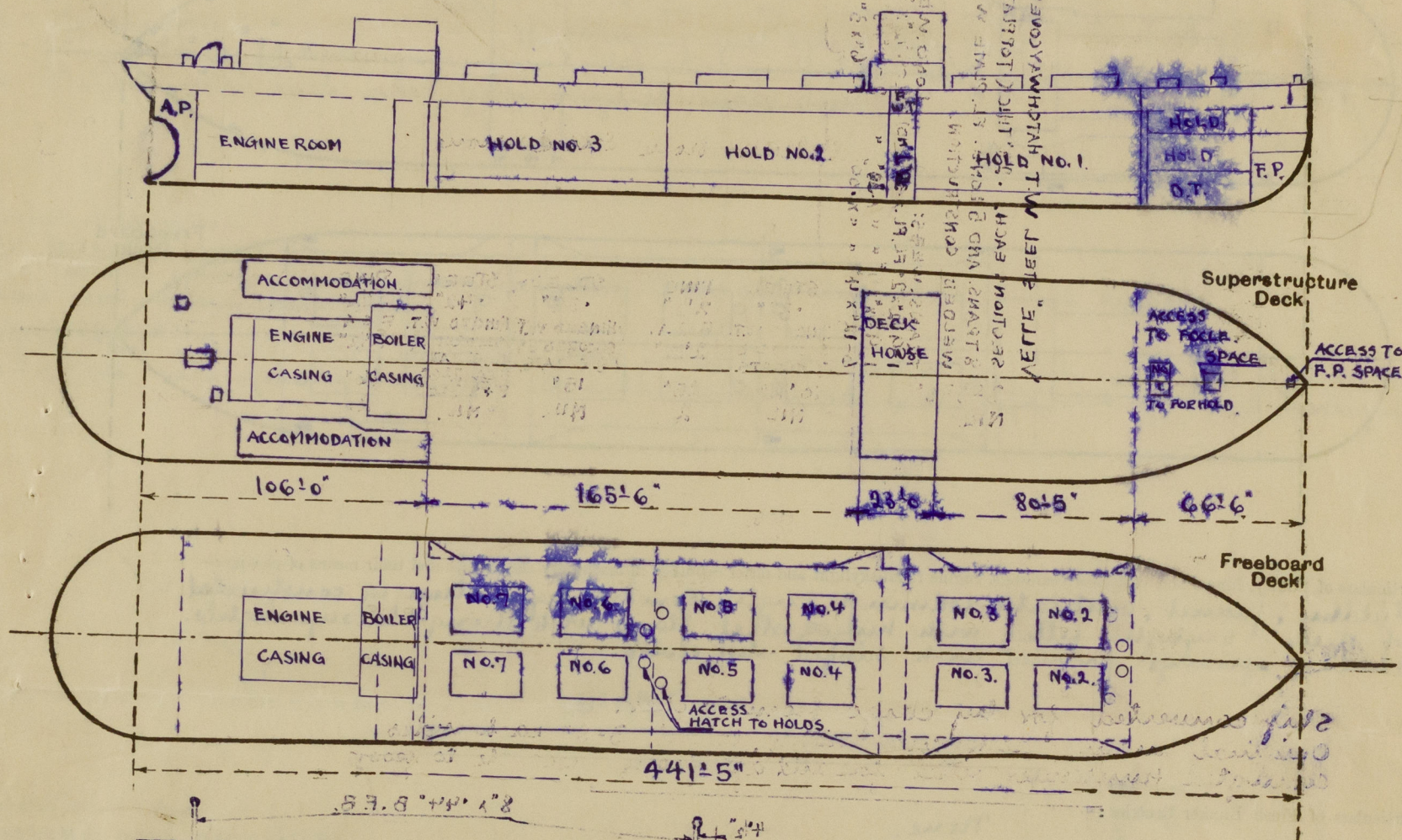
## SURVEYS FOR FREEBOARD.

### (CONDITIONS OF ASSIGNMENT.)

Index No. \_\_\_\_\_  
(For London Office only).

Ship's Name **TITANIAN** Port of Survey **BERGEN**  
 Official Number \_\_\_\_\_ Surveyor's Signature *Knut Olsen*  
 Nationality and Port of Registry **NORWEGIAN - BERGEN** Date of Survey **24-6-11-8-11-9-11-10-11-56**

Disposition and dimensions of superstructures, trunks, deckhouses and machinery casings to be inserted in the diagrams and tabular statement: -



Particulars of Superstructures, Trunks, Casings, Deckhouses.								
	Coaming	Plating	Stiffeners	Spacing	End Attachments of Stiffeners	Size of Openings	Height of Sills	Height of Casings
Poop Bulkhead <b>OUTSIDE TRUNK</b>	1/2"	1/2"	6" x 3 1/2" x 38"	19'-27"	BRACKETED TOP & BOTTOM	None	None	7'-5 3/4"
Raised Quarter Deck Bulkhead								
Bridge, After Bulkhead								
Bridge, Forward Bulkhead								
Forecastle Bulkhead <b>OUTSIDE TRUNK</b>	1/2"	1/2"	5" x 3 1/2" x 38"	26 1/2"	BRACKETED TOP & BOTTOM	None		7'-5 3/4"
Trunk, Aft								
Trunk, Forward								
Exposed Machinery Casings on Freeboard or Raised Quarter Decks								
Exposed Machinery Casings on Superstructure Decks	FORE END - 40" SIDE - 38"	FORE END - 1/2" SIDE - 3/8"	F. 6" x 3 1/2" x 36" L SIDE 4" x 3" x 50"	24" - 31" 24" - 36"	BRACKETED TOP CONTINUOUS BELOW	4' 8 1/4" x 21 1/4" 4' 19" x 21" 5' 10" x 24" 5' 10" x 24"	19 1/2" 19 1/4" 18 1/2" 18 1/4"	7'-9"
Machinery Casings within Superstructures not fitted with Class I Closing Appliances								
Deckhouses on Flush Deck Ships								
Particulars of Closing Appliances (state if capable of being manipulated from both sides).								
Poop Bulkhead	None							
Raised Quarter Deck Bulkhead	v							
Bridge, After Bulkhead	v							
Bridge, Forward Bulkhead	None							
Forecastle Bulkhead	v							
Exposed Machinery Casings on Freeboard or Raised Quarter Decks	v							
Exposed Machinery Casings on Superstructure Decks	HINGED STEEL DOORS, OPERATED FROM BOTH SIDES. BOTH TO STOWAGE HOLD W.T.							
Machinery Casings within Superstructures not fitted with Class I Closing Appliances	v							
Deckhouses on Flush Deck Ships	v							







PARTICULARS OF PROTECTION TO OPENINGS, ETC.

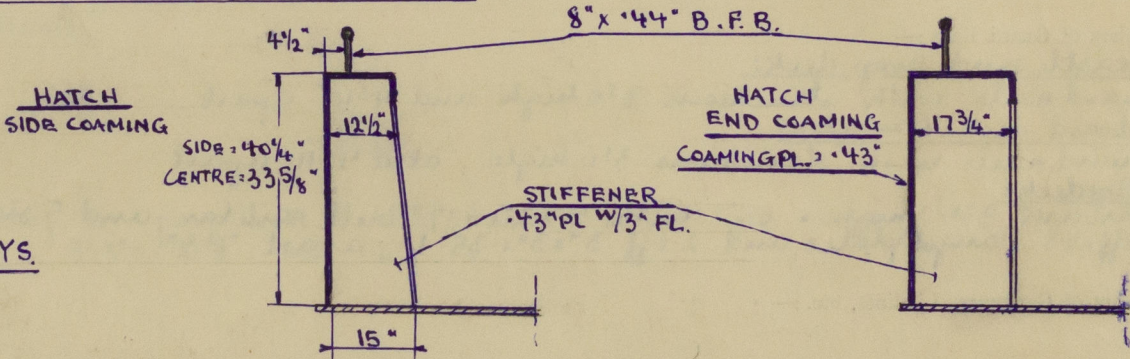
HATCHWAYS ON FREEBOARD AND SUPERSTRUCTURE DECKS.									
		TRUNK DECK		FORECASTLE DECK		POOP DECK			
Description of Hatchway		Nos. 2, 3, 4, 5, 6 & 7 PORT & STARBOARD		ACCESS TO HATCHWAYS TO HOLDS		ACCESS TO F.P. SPACE FOCLE SPACE		No. 1. 2 ACCESS TO POOP ACCOM.	
Dimensions of Hatchway		27'-0" x 17'-0"		19 3/4" DIA		22 5/8" x 23 1/4"		36 1/4" x 36 1/4"	
COAMINGS	Height above Deck	33 5/8"		5 7/8"		24"		24 3/4"	
	Thickness	.43"		.47"		.38"		.40"	
	Sides	3 SIDES		6 ENDS.		.47"		.38"	
	Ends	10 SIDES.							
HATCH BEAMS	Number	2		None		None		None	
	Spacing	28" THICK TOP PLATING WITH		None		None		None	
	Scantling and Sketch	8 TRANS. AND 5 LONG. FL. PLATE WEBS OF		None		None		None	
	Bearing Surface	WELDED CONSTRUCTION.		None		None		None	
FORE AND AFTERS	Number	2		None		None		None	
	Spacing	28" THICK TOP PLATING WITH		None		None		None	
	Unsupported Lengths	8 TRANS. AND 5 LONG. FL. PLATE WEBS OF		None		None		None	
	Scantling and Sketch	WELDED CONSTRUCTION.		None		None		None	
HATCH COVERS	Material	STEEL		PINE		STEEL		STEEL	
	Thickness	.39"		2 1/2"		.39"		.42"	
	How fitted	HINGED W.T.		F & A.		HINGED W.T.		HINGED W.T.	
	Bearing Surface	SECURED BY 7 CLEATS		2 1/2"		SECURED BY 8 CLEATS		SECURED BY 16 CLEATS	
Spacing of Cleats		3-33 3/8"		10 1/2"		15"		15"	
Number of Tarpaulins		NIL.		NIL		2		NIL.	

\*Are wood fore and afters steel shod at all bearing surfaces? No.  
Are battens and wedges efficient and in good condition? Yes.  
Are tarpaulins in good condition and in accordance with rule requirements? Yes.  
Are lashings provided in accordance with rule requirements? Yes.

Particulars of any special features:—

Ship converted for dry cargo from tanker.  
Original main deck cut away except 3'8" each sides  
converted hullsides fitted fore and aft from forecastle to poop.

SKETCH OF MAIN HATCHWAYS.



Endorsement at first survey and at surveys for renewal of Certificate:—

The fittings and appliances are in accordance with the particulars shown on this form (or as now modified) and are in good condition.



© 2020

Lloyd's Register  
Foundation