

31/10/29

NO 1384 SHIP.

# BALANCED RUDDER & STERN FRAME.

Scale  $\frac{1}{2}$ " = 1 Foot, except where marked otherwise.

Longitudinal No. 14586

Speed 11½ Knots

Total Area of Rudder 144.5 ft<sup>2</sup>

Dia. of Rudder Head  $7\frac{1}{2}$ " + 10% =  $8\frac{1}{4}$ "

Stern Frame - Upper Portion Cast Steel.

Lower Portion Forging.

Rudder Frame - Forging.

Casting 19" wide, with  
Rivets 2½" thick and  
18-25" bolts.

10" dia.  
10" x 8"

LWL 25'-6"

8½" dia

52" x 8½"

2 rows of 7½" dia Rts  
spaced 6" apart

1/8"

1" check

Locking Pin 6" dia  
with brass liner ¼" L.V. Bush  
3" metal around pin.

Bearing Pin 7½" dia with  
¼" brass liner and  
½" L.V. Bush, Hard Steel Bush  
3½" metal around pin.

94 x 8½  
(or 78½ sq in.)

33'-0"

12" dia.

15" x 10"

10"

12"

12" metal

1" hole

12"

12"

12"

12"

12"

12"

12"

12"

12"

12"

12"

12"

12"

12"

12"

12"

12"

12"

12"

12"

12"

12"

12"

12"

12"

12"

12"

12"

12"

12"

12"

12"

12"

12"

12"

12"

12"

12"

12"

12"

12"

12"

12"

12"

12"

12"

12"

12"

12"

12"

12"

12"

12"

12"

12"

Single Row Rivets in Rudder Arms  
1" dia spaced 4½" apart - red.  
Single Row Rivets in web and  
after edges of webbed  
7½" dia spaced 4" apart

21'-7½"

18'-6"

2'-4½"

2'-4½"

2'-4½"

2'-4½"

2'-4½"

2'-4½"

2'-4½"

2'-4½"

2'-4½"

2'-4½"

2'-4½"

2'-4½"

2'-4½"

2'-4½"

2'-4½"

2'-4½"

2'-4½"

2'-4½"

2'-4½"

2'-4½"

2'-4½"

2'-4½"

2'-4½"

2'-4½"

2'-4½"

2'-4½"

2'-4½"

2'-4½"

2'-4½"

2'-4½"

2'-4½"

2'-4½"

2'-4½"

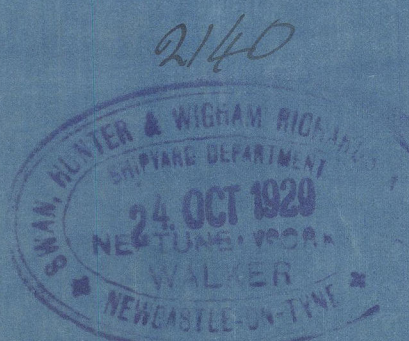
2'-4½"

2'-4½"

2'-4½"

2'-4½"

2'-4½"



1½" tapered flat

Filling of Suitable Material.

Forged Iron

Section through Rudder  
Scale 1" = 1 Foot

2 Rows of 1½" dia Rts  
spaced 5" apart

3 Rows of 1½" dia Rts  
spaced 15" apart  
(below above)

10½" x 8½" (or 91 sq in.)

2'-8½"

2'-8½"

2'-8½"

2'-8½"

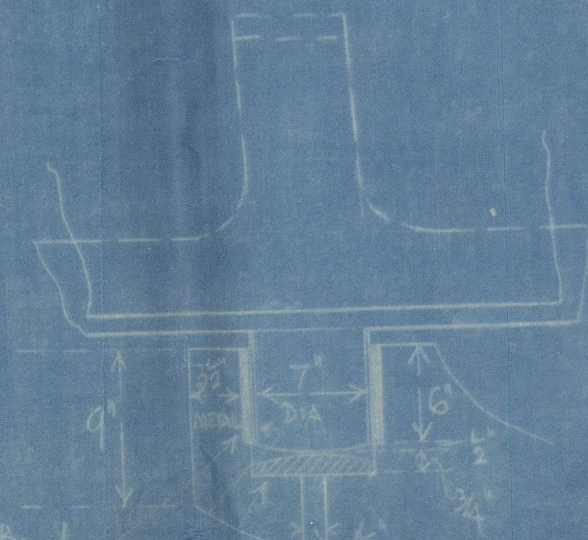
2'-8½"

2'-8½"

2'-8½"

2'-8½"

2'-8½"



Bottom Pin  
Scale 1" = 1 Foot



Sivan Hunter 1384

Balanced Rudder  
+ Stem frame

7

---

S.S. "MORGENEY"

NEWCASTLE ON TYNE.

Report No. 86 364.

---



© 2020

Lloyd's Register  
Foundation

003131-003137-0110