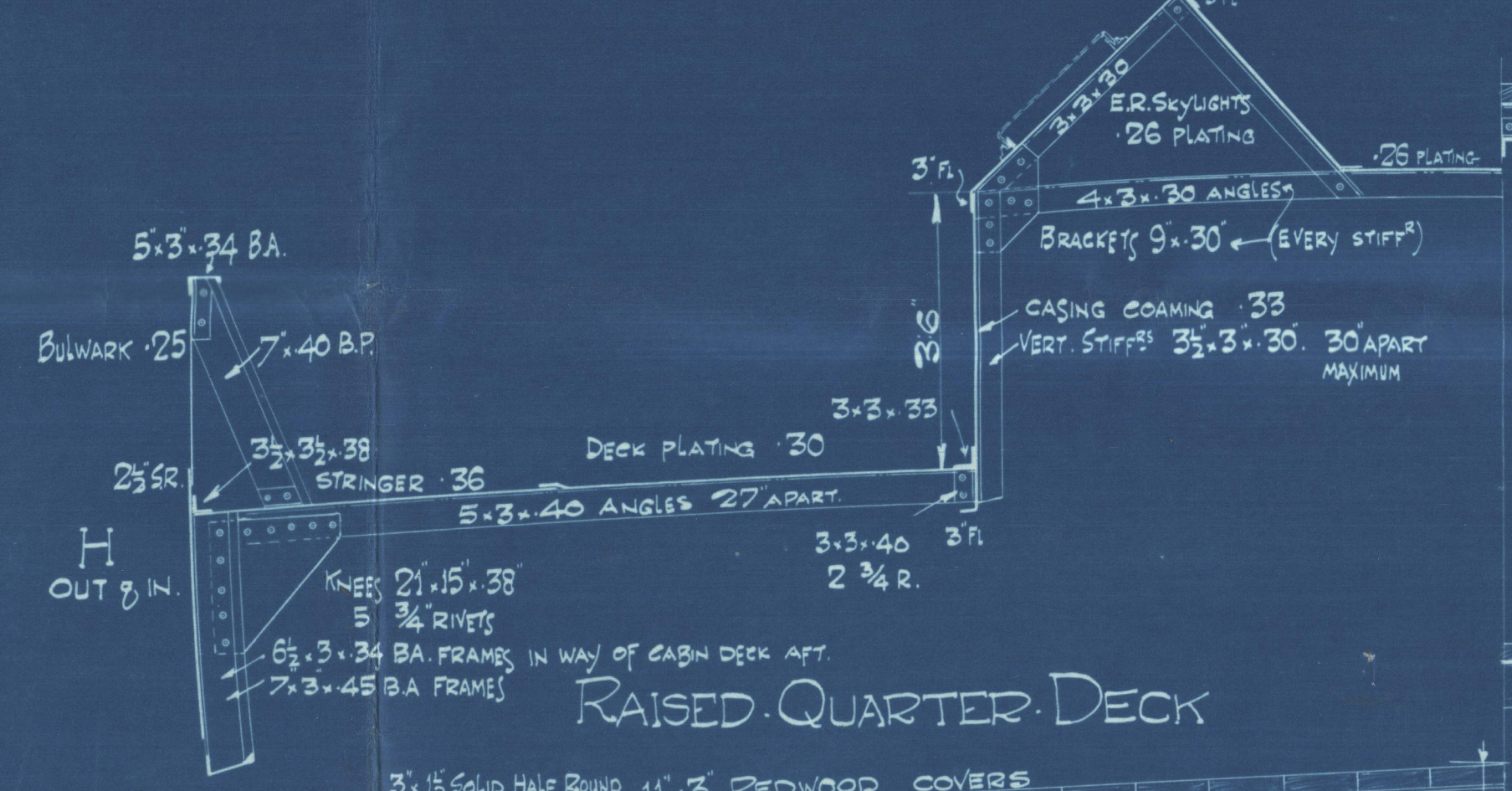
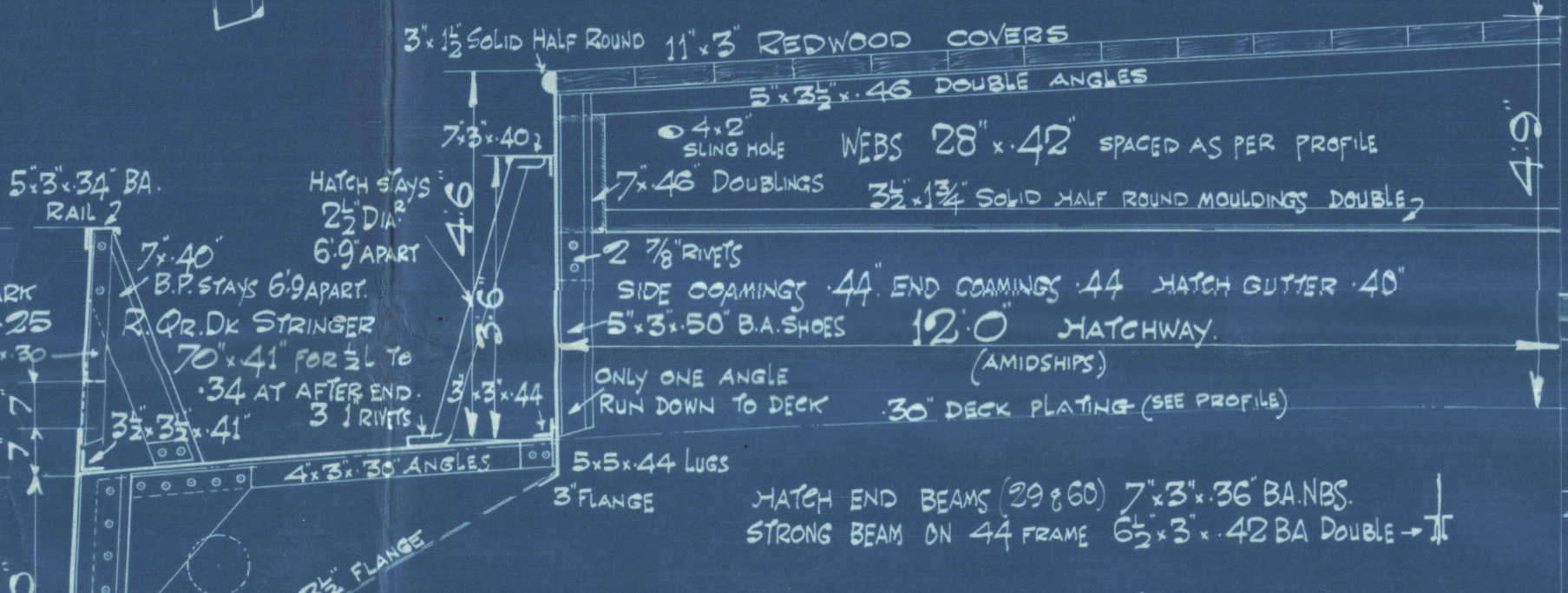


LLOYDS		NUMERALS		ETC	
LENGTH ON L.W.L.	226.80	EQUIPMENT	NUMERAL	12181.00	2 BOWER ANCHORS EACH 28 cwt stockless
BREADTH MLD	36.25	LONG NO	471.96	1 BOWER ANCHOR	24 cwt stockless
DEPTH MLD	17.46	BRIDGE 158.0 x 3.42	82.69	1 STREAM ANCHOR	6 cwt stockless
L x D	3.960	FORECASTLE 215.6 x 7.5	98.75	240 FATHOMS CABLE	19 1/2 STUD LINK
L x D (B+D)	12.181	CASINGS 371.6 x 3.5 x 5.0	63.03	75 FATHOMS STREAM CHAIN	11 STUD LINK
L x D (B+D)	14.5	HOUSE AFT 12.7 x 5.0	42.00	90 FATHOMS TOWLINE	3 1/2 WIRE
L x D (B+D)	17.91			90 FATHOMS HANSEER	2 1/2 WIRE
L x D (B+D)	18.99			90 FATHOMS WARP	1 1/2 WIRE
L x D (B+D)	10.66				
		EQUIPMENT NO	120937.43		

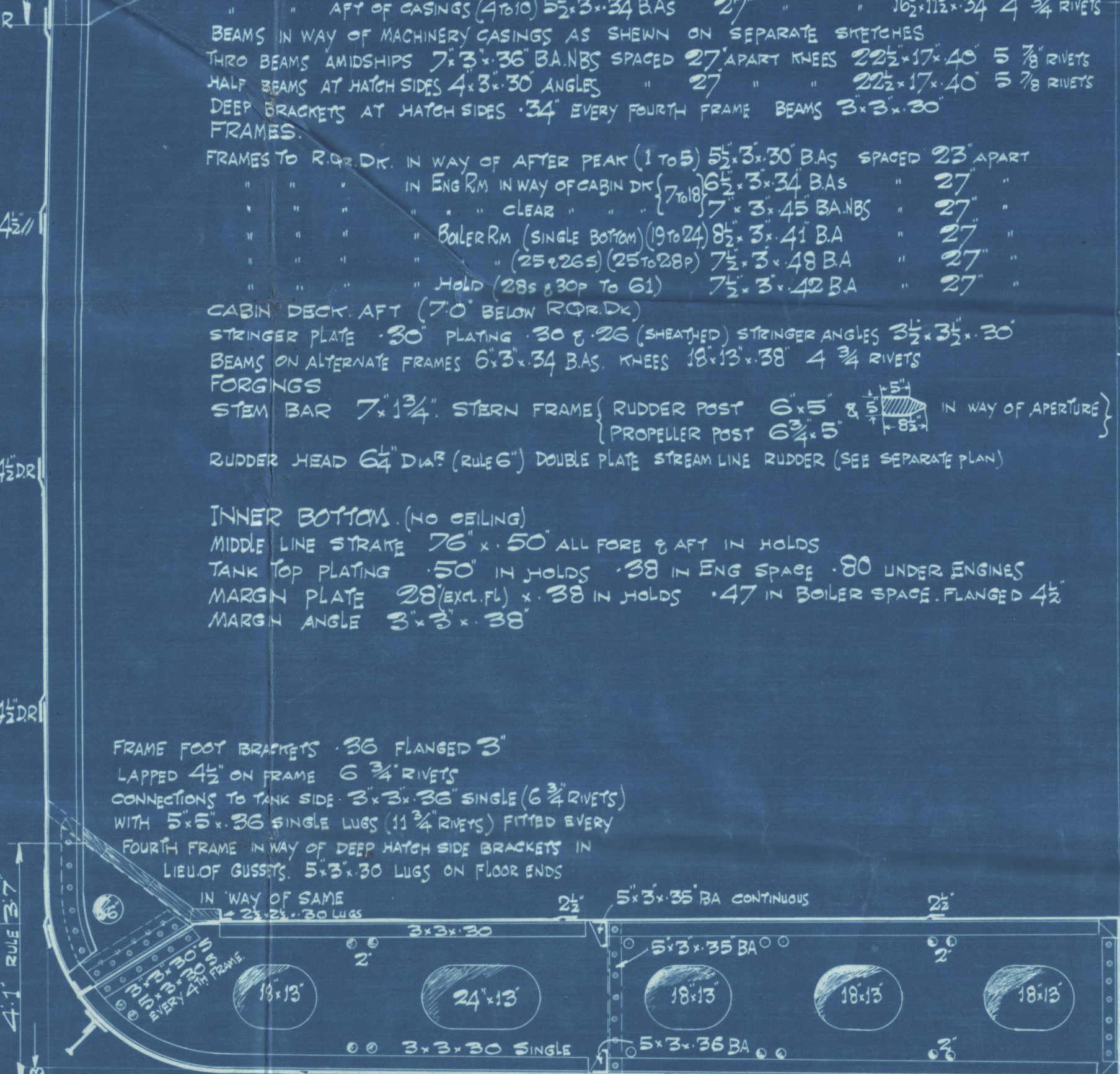
### SECTION IN WAY OF ENGINE CASING



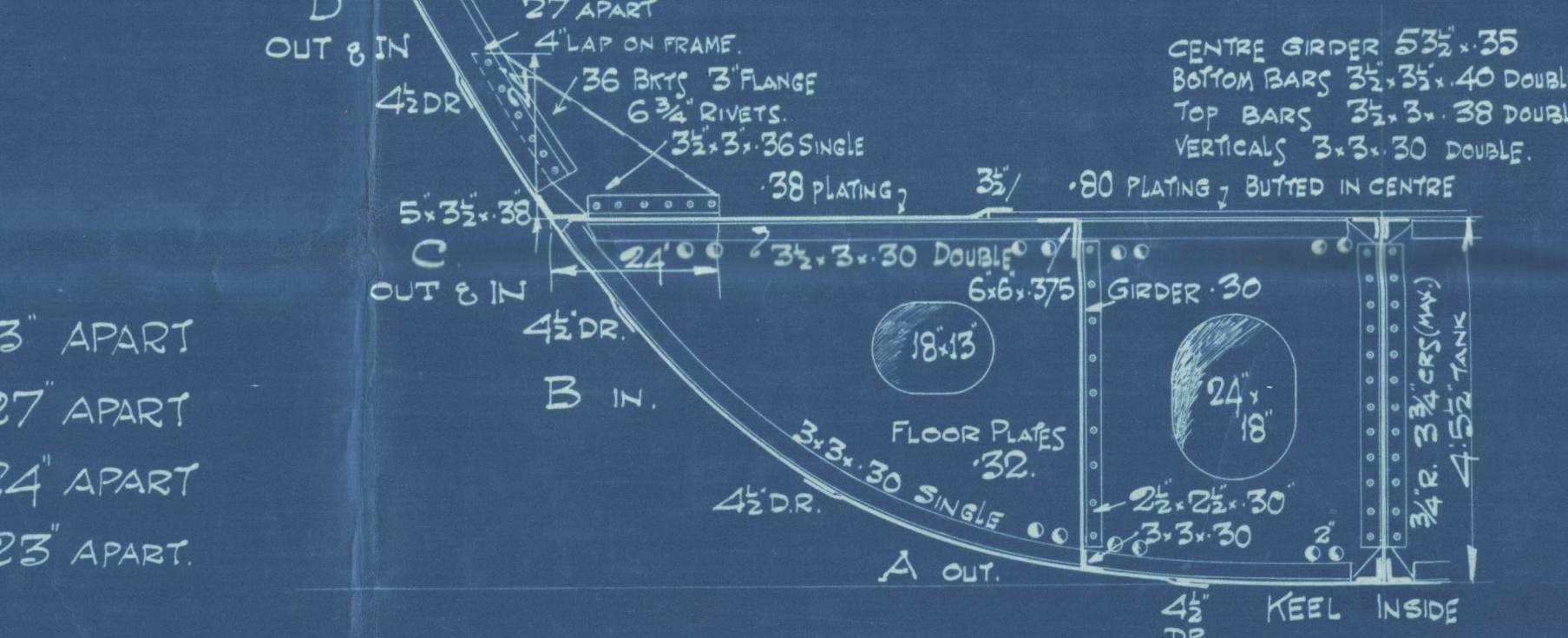
### RAISED QUARTER DECK



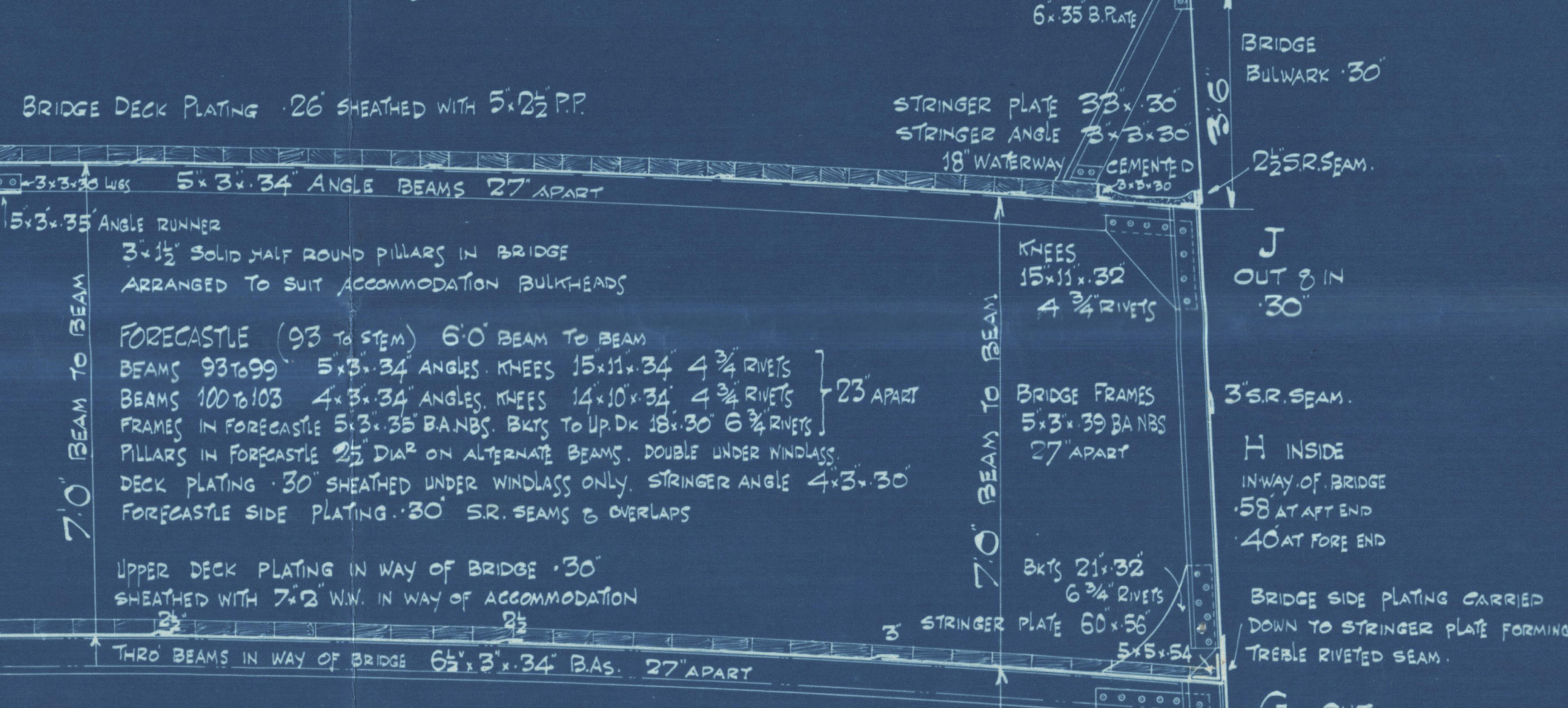
### UPPER DECK & FORE HOLD



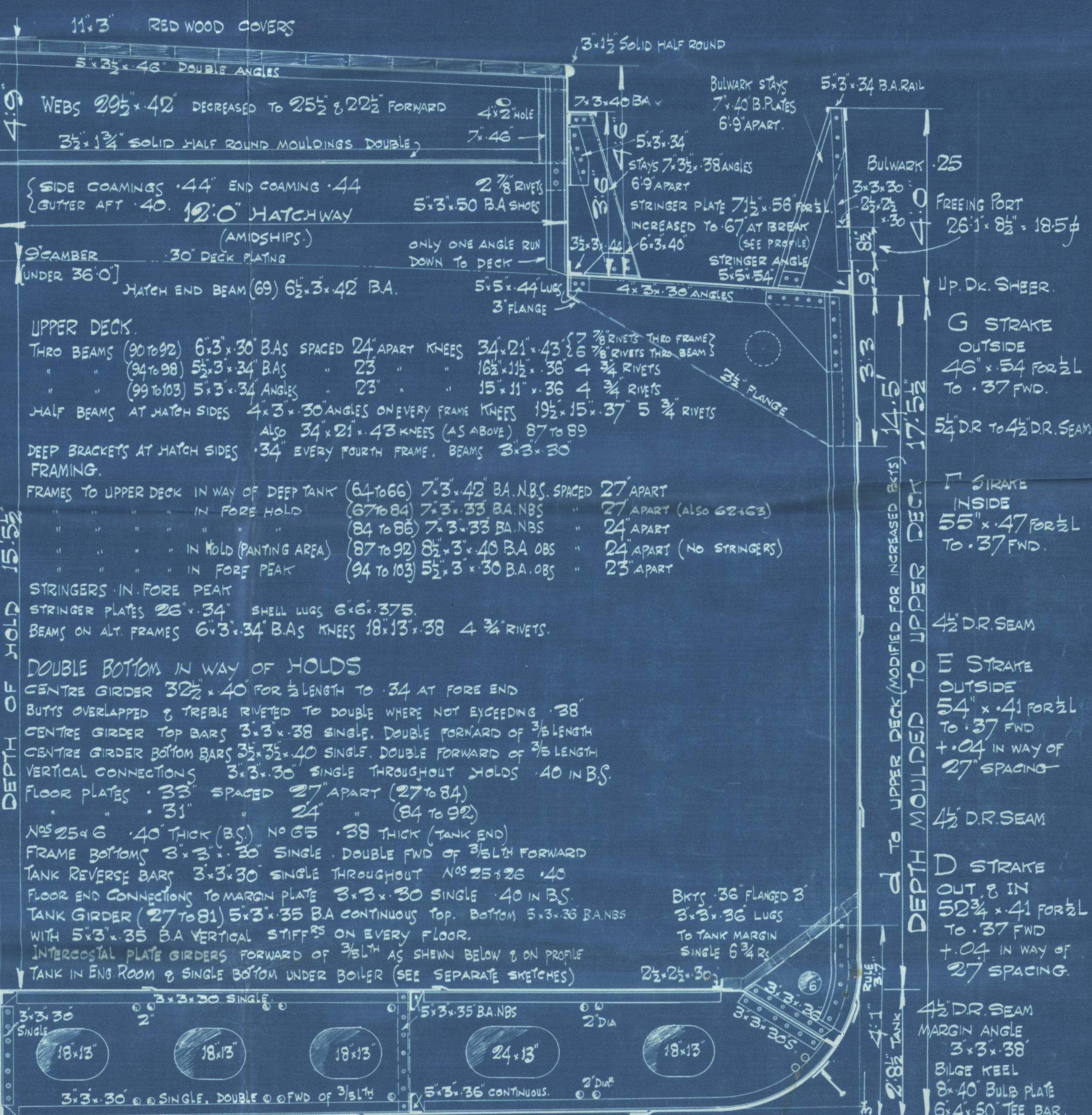
### SECTION THRO. E.R. TANK (ENGINES AFT)



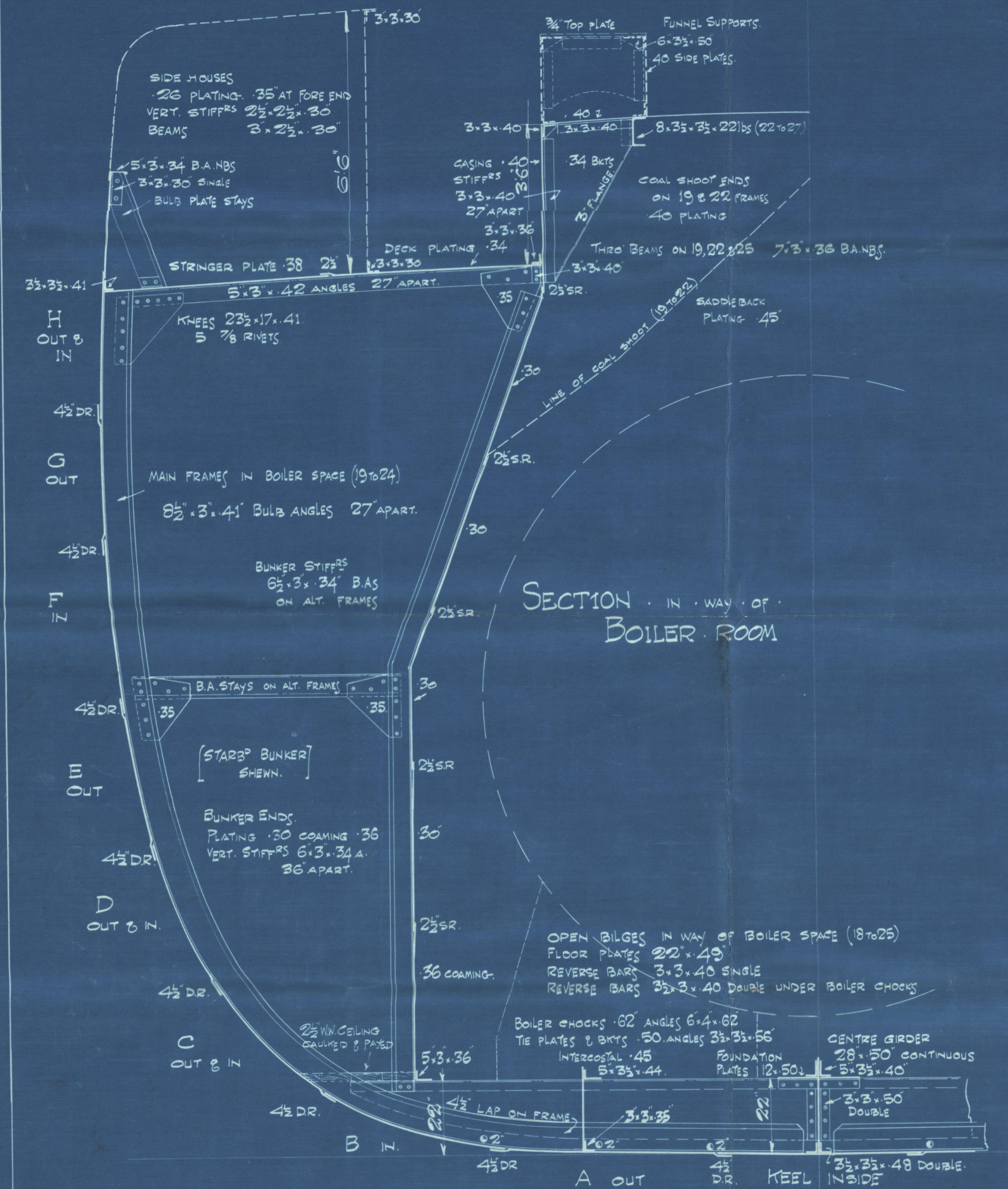
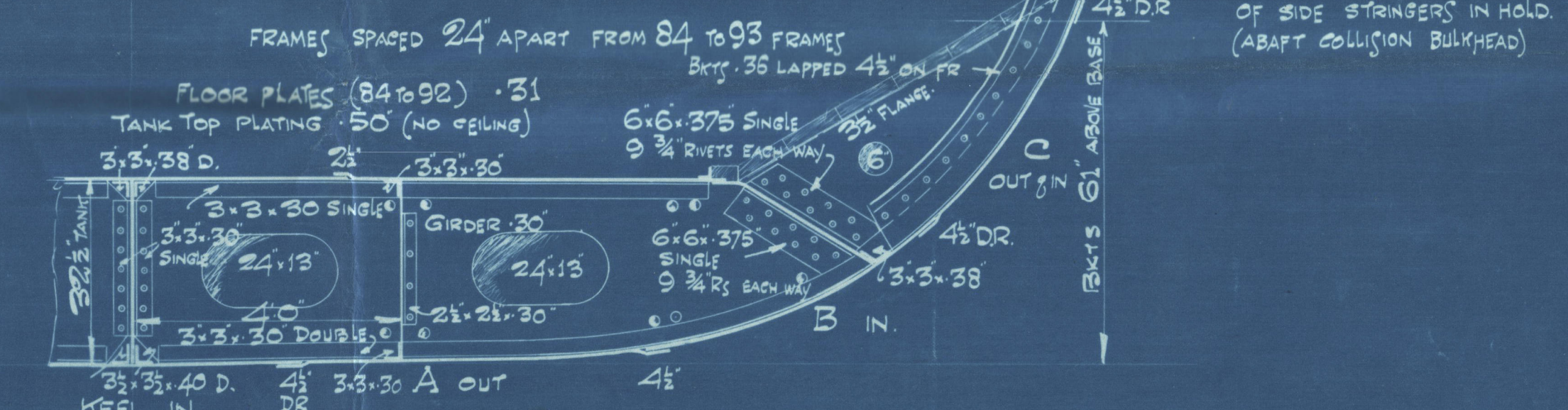
### SECTION IN WAY OF BRIDGE



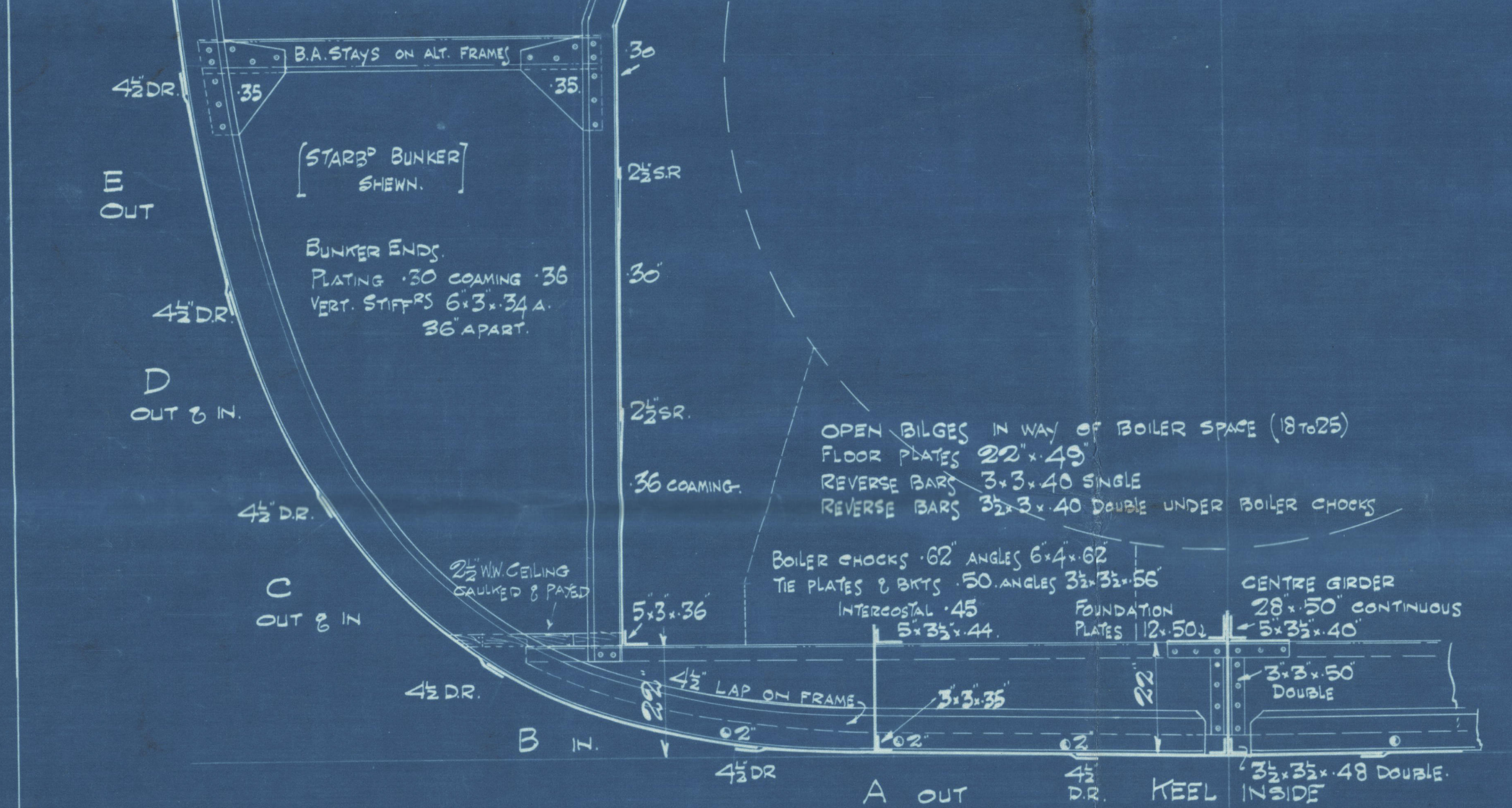
### UPPER DECK & FORE HOLD



### DOUBLE BOTTOM FWD & FRAME FOOT BRACKETS IN PAINTING AREA



### SECTION IN WAY OF BOILER ROOM



S. P. AUSTIN & SON, LTD.  
SHIPBUILDERS & REPAIRERS,  
WEAR DOCK YARD,  
SUNDERLAND.  
Date: 28.10.1932  
Reference No. 1111

• MIDSHIP SECTION •  
- Etc. -  
No. 325  
% TYNDALL

FRAME SPACING	
FRAMES 1 TO 6	SPACED 23' APART
FRAMES 6 TO 84	SPACED 27' APART
FRAMES 84 TO 93	SPACED 24' APART
FRAMES 93 TO 103	SPACED 23' APART

• LENGTH B.P. 227'0" • BREADTH EXT. 36'6" • DEPTH MLD TO UPDR 17'5 1/2"

CLASS 100 A1 LLOYDS SPECIAL SURVEY



Sunderland.

S. P. Austin & Son.

—No 325.—

"S.S. TYNDALL."

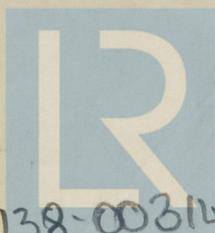
Midship Section.

(—as built—)

SUNDERLAND RPT. NO. 31054

LLOYD'S REGISTER OF SHIPPING

SUNDERLAND.



© 2020

Lloyd's Register  
Foundation

003138-003146-0247